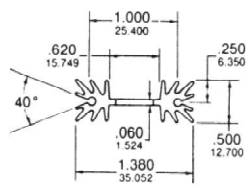
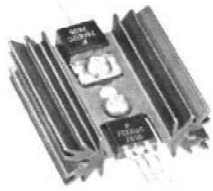


ADDITIONAL EXTRUDED PRODUCTS FOR TO-126, TO-202, TO-218 AND TO-220 TRANSISTORS

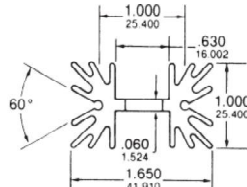
7-338 & 7-339-1, -2, -3, -4

Tin-plated steel roll pins for solder mount

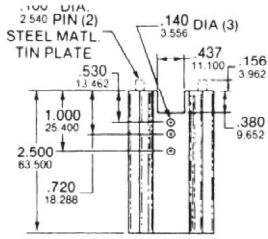
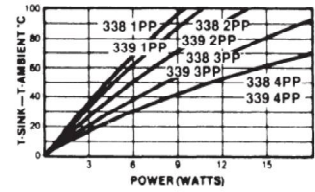
Material ... 6063-T5 aluminum
Finish ... Black Anodize



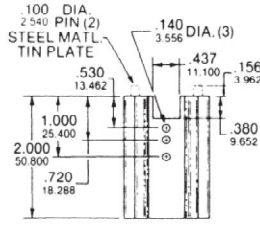
7-338



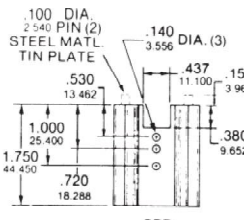
7-339



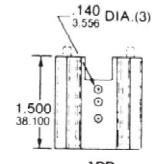
4PP



3PP

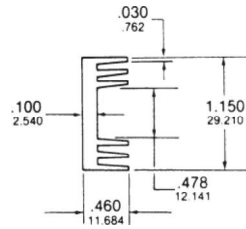
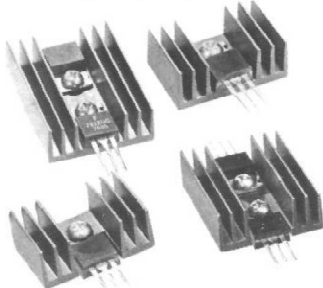


2PP

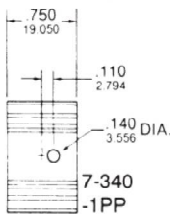
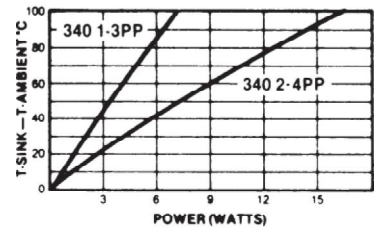


1PP

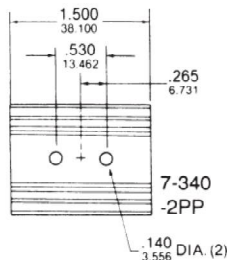
7-340-1, -2, -3, -4



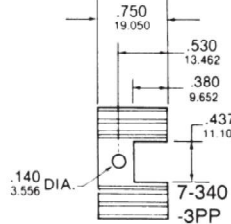
Material ... 6063-T5 Aluminum
Finish ... Black Anodize



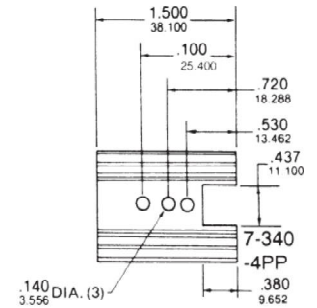
7-340
-1PP



7-340
-2PP

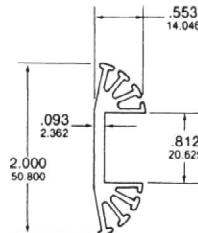
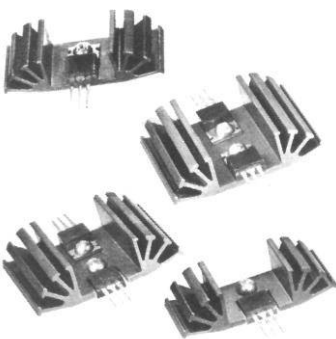


7-340
-3PP

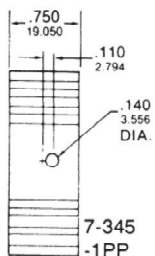
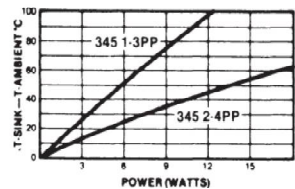


7-340
-4PP

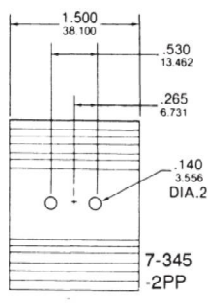
7-345-1, -2, -3, -4



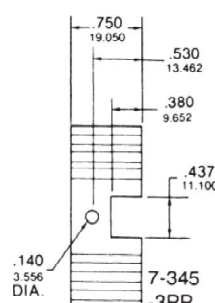
Material ... 6063-T5 Aluminum
Finish ... Black Anodize



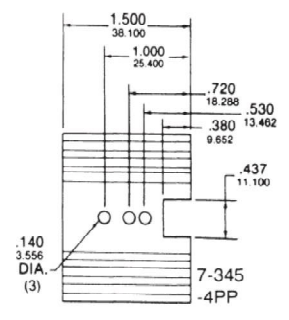
7-345
-1PP



7-345
-2PP



7-345
-3PP



7-345
-4PP

Mouser Electronics

Authorized Distributor

Click to View Pricing, Inventory, Delivery & Lifecycle Information:

CTS:

[73401PPBA](#) [73453PPBA](#) [73394PPBA](#) [73452PPBA](#) [73384PPBA](#) [73391PPBA](#) [73393PPBA](#) [73422PPBA](#)
[73451PPBA](#) [73403PPBA](#) [73381PPBA](#) [7-338-3PP-BA](#) [7-340-4PP-BA](#) [7-342-1PP-BA](#)