



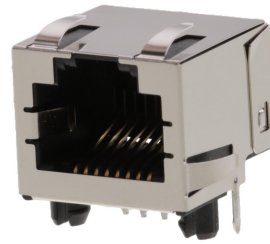
Part Number : [438600013](#)

Product Description : Modular Jack, Right-Angle, Low Profile, Inverted, Shielded, Offset Panel Grounding Tabs, 8/8

Series Number : 43860

Status : Active

Product Category : Modular Jacks and Plugs



---

## Documents & Resources

### Drawings

[Drawing 438600013\\_sd.pdf](#)

[Packaging Design Drawing PK-43860-005-001.pdf](#)

### 3D Models and Design Files

[3D Model 438600013\\_stp.zip](#)

### Specifications

[Application Specification AS-43860-001-001.pdf](#)

[Product Specification PS-43860-003-001.pdf](#)

[Test Summary TS-43860-001-001.pdf](#)

---

## Product Environment Compliance

### Compliance

GADSL/IMDS	Not Relevant
China RoHS	
EU ELV	Not Relevant
Low-Halogen Status	Not Low-Halogen per IEC 61249-2-21
REACH SVHC	Not Contained per D(2023)3788-DC (14 Jun 2023)
EU RoHS	Compliant per EU 2015/863

### [Multiple Part Product Compliance Statements](#)

- Eu RoHS
- REACH SVHC
- Low-Halogen

### [Multiple Part Industry Compliance Documents](#)

- IPC 1752A Class C
- IPC 1752A Class D
- Molex Product Compliance Declaration
- IEC-62474
- chemSHERPA (xml)

EU RoHS Certificate of Compliance

---

## Part Details

### General

Status	Active
Category	Modular Jacks and Plugs
Series	43860
Description	Modular Jack, Right-Angle, Low Profile, Inverted, Shielded, Offset Panel Grounding Tabs, 8/8
Component Type	PCB Jack
Magnetic	No
Performance Category	3
Power over Ethernet (PoE)	N/A
Product Family	Magnetic and Modular Jacks/Plugs
Product Name	Modular Jack 8/8,RJ45
UPC	800753919976

### Agency

CSA	LR19980
UL	E107635

### Electrical

Current - Maximum per Contact	1.5A
Grounding to Panel	Offset Panel Ground Tabs
Grounding to PCB	Yes
Shielded	Yes
Voltage - Maximum	150V AC (RMS)

### Physical

Color - Resin	Black
---------------	-------

Durability (mating cycles max)	500
Flammability	94V-0
Inverted / Top Latch	Yes
Jack Height	13.53mm
Lightpipes/LEDs	None
Material - Metal	Brass, Phosphor Bronze
Material - Plating Mating	Gold
Material - Plating Termination	Tin
Material - Resin	High Temperature Thermoplastic
Net Weight	3.726/g
Orientation	Right Angle (Side Entry)
Packaging Type	Tray
Panel Mount	With Flange
PCB Locator	Yes
PCB Retention	Yes
PCB Thickness - Recommended	1.57mm
Pitch - Mating Interface	1.02mm
Pitch - Termination Interface	1.02mm
Plating min - Mating	1.270µm
Plating min - Termination	2.540µm
Port Configuration	1x1
Positions / Loaded Contacts	8/8
Temperature Range - Operating	-40° to +85°C
Termination Interface Style	Through Hole
Wire/Cable Type	N/A

### Solder Process Data

Max-Duration	5
Lead-Free Process Capability	WAVE
Max-Cycle	1
Max-Temp	260

---

### Mates With / Use With

#### Mates with Part(s)

Description	Part Number
Mates With	FCC 68 Plugs

---

This document was generated on Feb 27, 2024