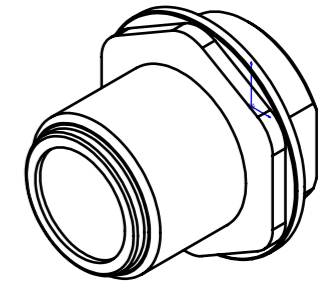
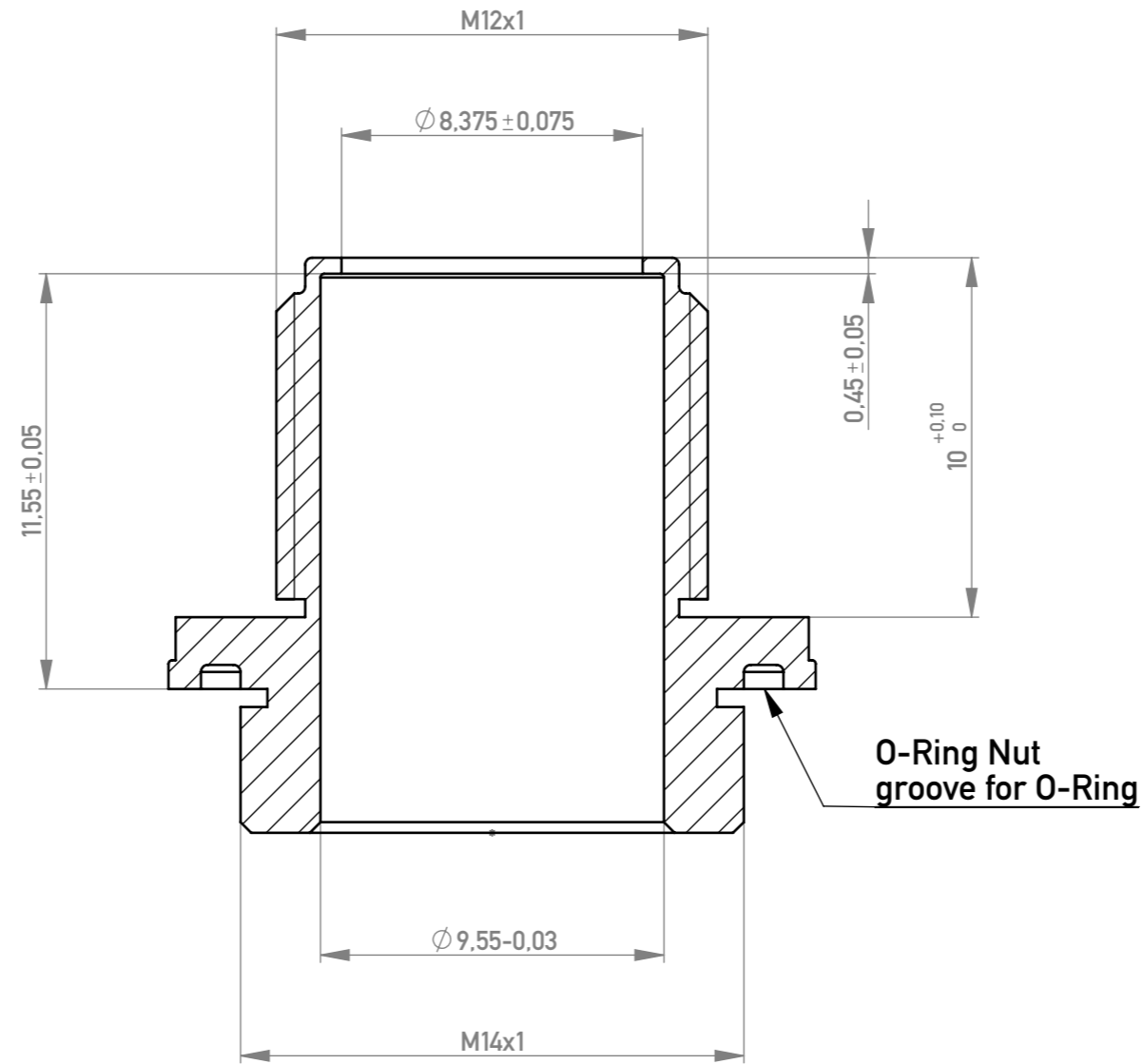


SCHNITT A-A: MAßSTAB 5 : 1  
SECTION A-A: SCALE 5 : 1



Material Messing / Brass  
Oberfläche galv. Ni über Cu/  
Plating Nickel over copper

Anziehdrehmoment  $1,5 \pm 0,2 \text{ Nm}$   
Tightening torque  $1,5 \pm 0,2 \text{ Nm}$

Information:  All rights reserved. Only for Information. To ensure that this is the latest version of this drawing, please contact one of the ERNI companies before using.	Tolerances   All Dimensions in mm	Scale	2:1
		Designation	<b>Ver.schraube M12 90°</b> <b>Lock. Screw M12 90°</b>
a Index	06.09.2017 Date	www.ERNI.com	<b>225361</b> Class MRDEZT
			2 A3

Copyright by ERNI Production GmbH & Co. KG  
Proprietary notice pursuant to ISO 16016 to be observed.

# Mouser Electronics

Authorized Distributor

Click to View Pricing, Inventory, Delivery & Lifecycle Information:

[ERNI Electronics:](#)

[225361](#)