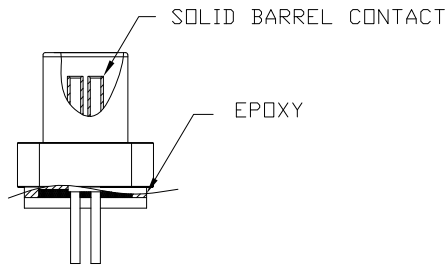
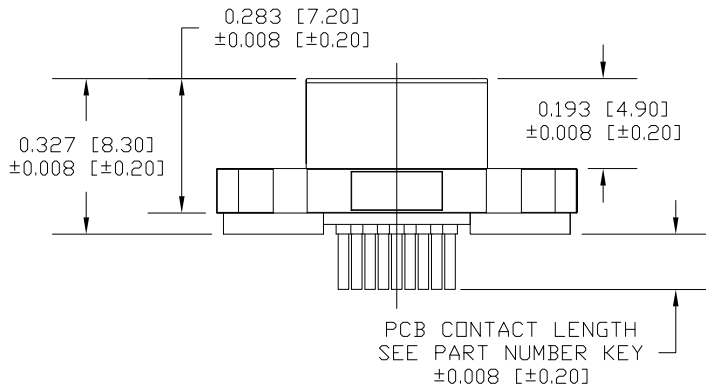
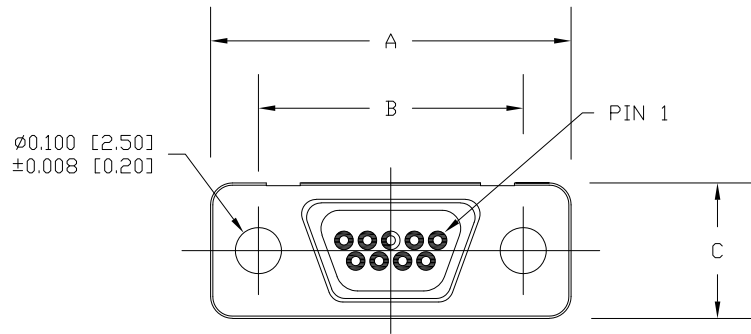


DESCRIPTION: MICRO D-SUB CONNECTOR - FEMALE



SPECIFICATIONS:

ELECTRICAL:

INSULATOR RESISTANCE: 1000 MOHMS MIN.  
 SIGNAL CONTACT RESISTANCE: 45 mOHMS MAX.  
 CONTACT CURRENT RATING: 1 AMP  
 D.W.V.: 500VAC  
 OPERATING TEMPERATURE: -55°C TO 85°C

MATERIALS:

INSULATOR: PBT UL94V-0, BLK  
 230°C MAX PROCESS TEMP  
 SHELL: ZINC ALLOY  
 CONTACTS: 15u" GOLD PLATED BRASS

DIMENSIONS(in/mm) ±0.006 [±0.15]			
SIZE	A	B	C
9	0.770	0.565	0.289
	19.55	14.35	7.35
15	0.919	0.717	0.289
	23.36	18.20	7.35
25	1.169	0.967	0.289
	29.70	24.55	7.35

380-YYY-21YL001

SERIES  
 POSITIONS  
 009  
 015  
 025

PCB CONTACT LENGTH  
 3 = 0.098 [2.50]  
 A = 0.175 [4.44]

NOTE:

\*\*NOT DESIGNED TO MATE WITH NORCOMP 580-M // 581-M SERIES CONNECTORS. IF ANY QUESTIONS PLEASE CONTACT ENG@NORCOMP.NET

RoHS COMPLIANT

UNITS = inch [mm]

DO NOT SCALE FROM DRAWING



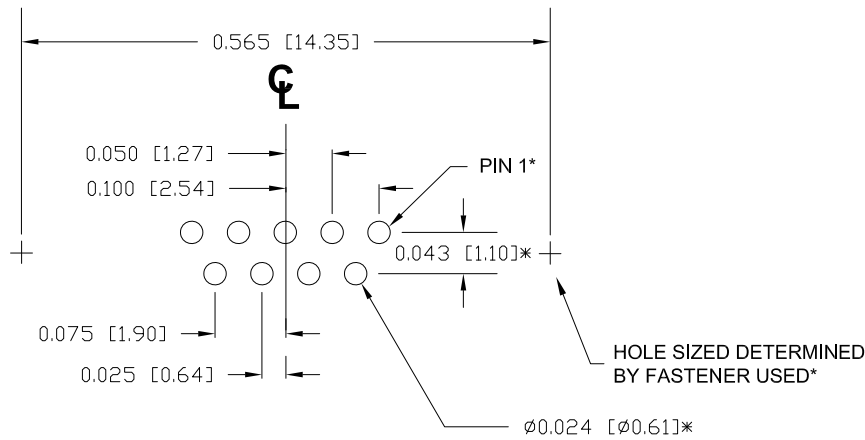
THESE DRAWINGS AND SPECIFICATIONS ARE THE PROPERTY OF NorComp AND SHALL NOT BE REPRODUCED, COPIED OR USED AS THE BASIS FOR THE MANUFACTURE OR SALE OF APPARATUS WITHOUT WRITTEN PERMISSION.

DRAWN:  
**M. SIGMON**  
 DATE:  
 08/19/2011

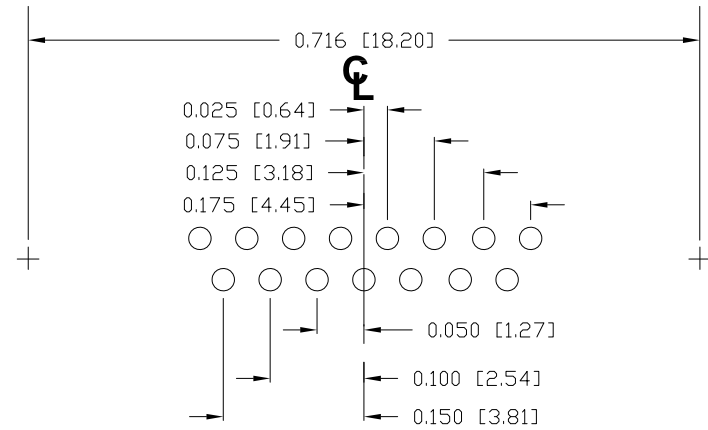
NorComp

SCALE: NTS	SHEET 1	OF 2	REV 8
DWG NO. 380-YYY-213L001			

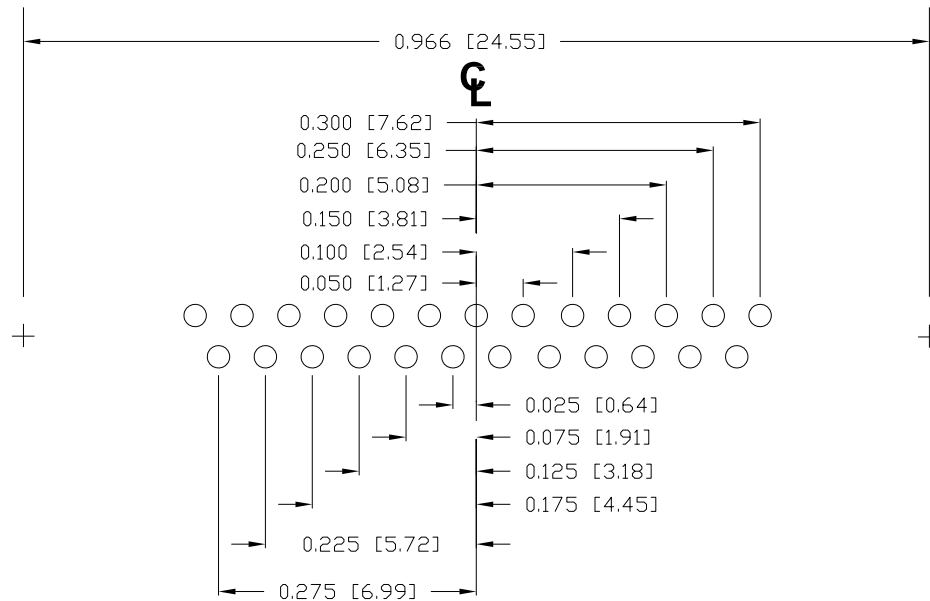
### 9 POSITION



### 15 POSITION



### 25 POSITION



\* TYPICAL  
TOLERANCE = ±0.002 [±0.05]

RoHS COMPLIANT

UNITS = inch [mm]

DO NOT SCALE FROM DRAWING



THESE DRAWINGS AND SPECIFICATIONS ARE THE PROPERTY OF NorComp AND SHALL NOT BE REPRODUCED, COPIED OR USED AS THE BASIS FOR THE MANUFACTURE OR SALE OF APPARATUS WITHOUT WRITTEN PERMISSION.

DRAWN:  
**M. SIGMON**

DATE:  
08/19/2011

**NorComp**

SCALE:  
NTS

SHEET OF  
2 2

REV  
8

DWG NO.

380-YYY-213L001

# Mouser Electronics

Authorized Distributor

Click to View Pricing, Inventory, Delivery & Lifecycle Information:

[NorComp:](#)

[380-009-213L001](#) [380-015-213L001](#) [380-025-213L001](#)