

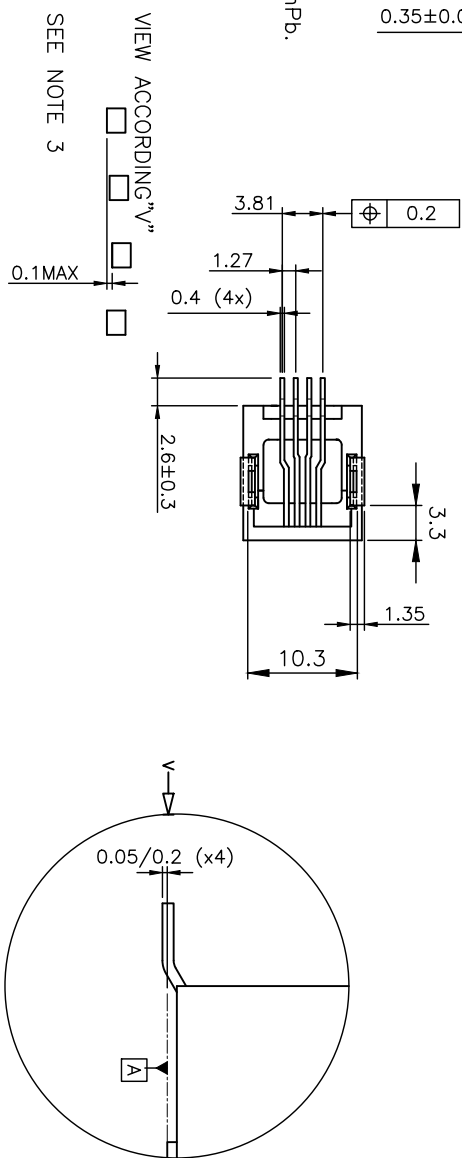
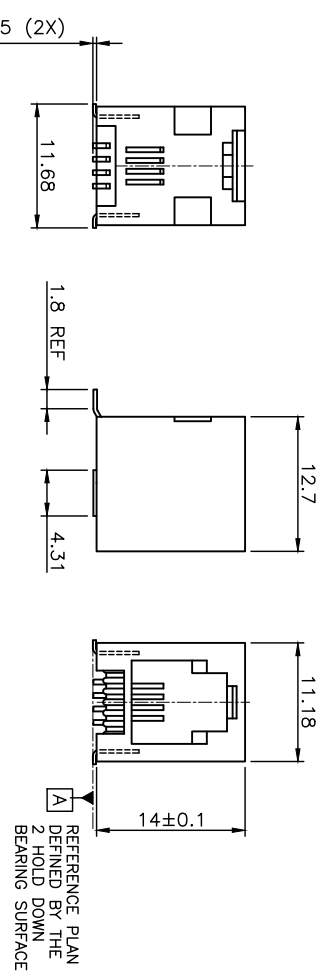
PRODUCT NUMBER  
73306-XXXLF

PLATING OPTION	
1 =	GXT 0.76 $\mu$ m
3 =	GOLD 0.76 $\mu$ m
5 =	GOLD 1.27 $\mu$ m

PACKAGE OPTION	
1 =	TAPE ON REEL
2 =	TUBE
3 =	TAPE ON REEL IN PLASTIC BAG
4 =	DEDICATED TAPE ON REEL

TERMINAL LOADING  
1 = FULLY LOADED

WHEN NEEDED, SUFFIX LETTER "LF" INDICATES THE PRODUCT IS ROHS COMPATIBLE, SEE NOTE 4.



- NOTES:
- 1 - MATERIAL: HOUSING: HIGH TEMP. PCT, COLOUR BLACK. TERMINAL: PHOSPHOR BRONZE.
  - 2 - PLATING: CONTACT AREA: SEE TABLE.  
SOLDER TAIL : 90/10 SnPb 2 $\mu$ m MIN.  
WHEN SUFFIX "LF" IS REQUIRED, 2 $\mu$ m MIN MATTE TIN OVER 1.27 MIN NI IS SUPPLIED INSTEAD OF SnPb.  
NO RAW EDGES EXEPT SOLDER TAIL TIPS
  - 3 - SOLDER TAILS COPLANARITY : 0.1 mm
  - 4 - ROHS COMPATIBLE PRODUCT SPECIFICATIONS

- a - PLATING:  
- "LF" MEANS THE PRODUCT IS LEAD-FREE, 2 $\mu$ m MINIMUM MATTE TIN OVER 1.27 $\mu$ m MINIMUM NICKEL UNDERPLATE.
- b - MANUFACTURING PROCESS COMPATIBILITY  
- THE HOUSING WILL WITHSTAND EXPOSURE TO 245°C PEAK TEMPERATURE FOR 30 SECONDS MAX IN A CONVECTION, INFRA-RED OR VAPOR PHASE OR REFLOW OVEN.
- c - LABELING:  
- MEETS PACKAGING SPECS AS PER GS-14-920
- d - LEGAL STATEMENT: SEE GS-47-0004

- 5 - PACKAGING FOR OPTION 3: EACH REEL IS WRAPPED INTO A PLASTIC BAG TO PROTECT FROM MOISTURE DURING STACKING TIME.

CUSTOMER COPY FOR REFERENCE ONLY

mat'l. code		surface		tolerance		projection		product family	
ltr	ec'n no	dr	date	ISO 1302	ISO 406	ISO 1001	mm	MOD JACK	
H	F05-0247	DLE	05.09.12				±0.13		
J	F06-0240	DLE	06.07.18						
K	F09-0070	LSA	09.07.23						
L	B-15798	JFA	13.09.09	dr	D	LEGRAND	04.10.18		
M	F-21888	AMA	15.09.09	engr	P	NIZZI	04.10.18		
N	F-36035	DDE	20.02.12	chr	D	LEGRAND	04.10.18		
Sheet	revision	N	F	B					
Index	sheet	1	2	3					



title  
SMT RA JACK  
product family  
MOD JACK

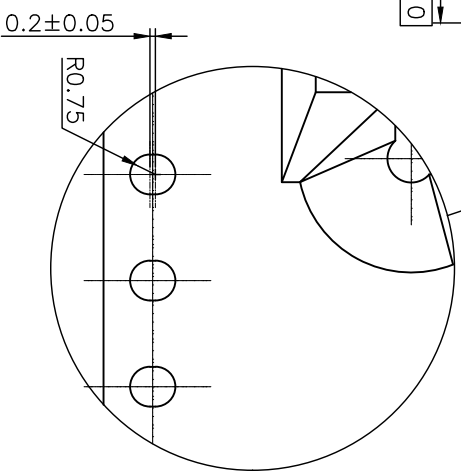
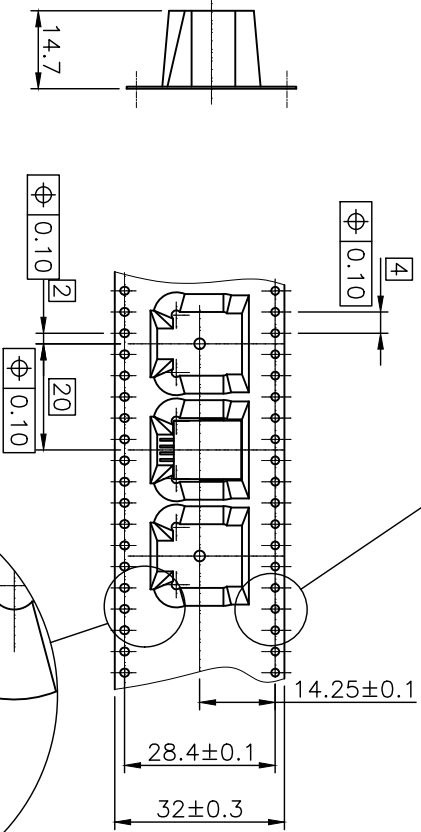
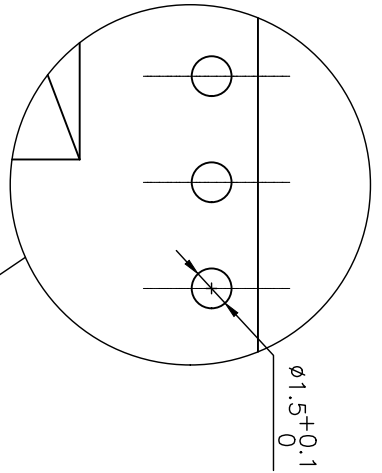
scale 2:1

type  
CUSTOMER Drawing

sheet no  
73306  
sheet 1 of 3  
size  
A3

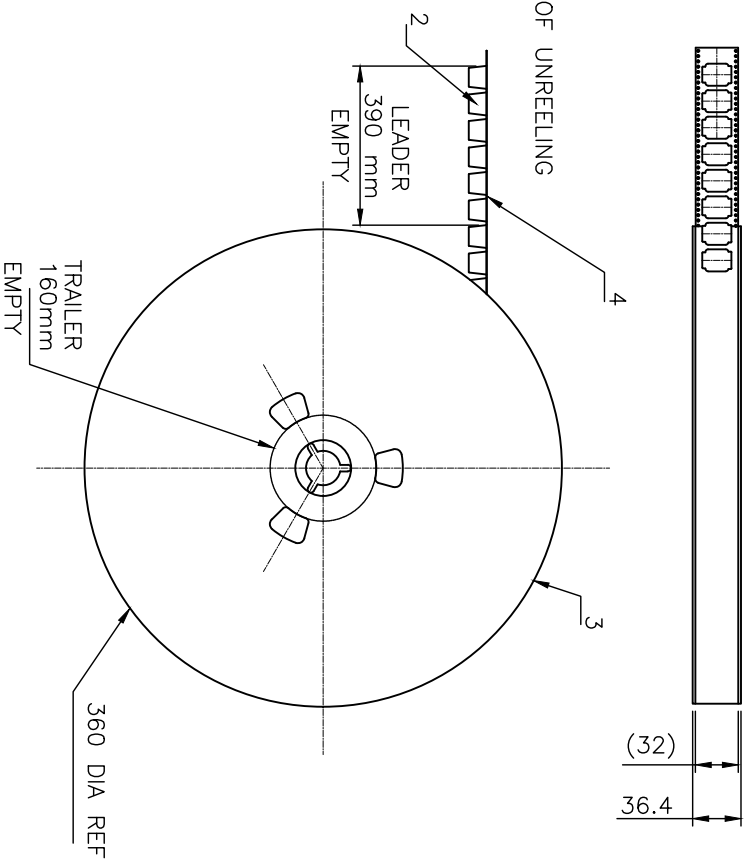
PRODUCT NUMBER  
SEE SHEET 1

LTR	PART NAME	QTY
1	PRODUCT	280
2	TAPE	1
3	REEL	1
4	COVER TAPE	1



DIRECTION OF UNREELING

SCALE 1:4



1 - IN ACCORDANCE WITH EIA-481 AND IEC 296-3

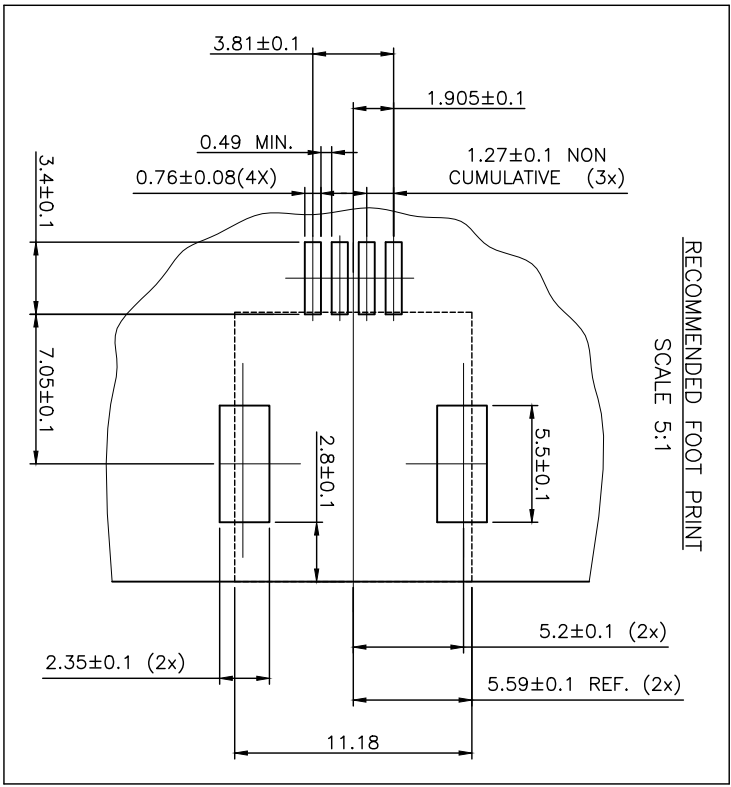
CUSTOMER COPY FOR REFERENCE ONLY

mat'l. code	surface	tolerance	projection	product family
E F90120	ISO 1302	ISO 406 ISO 1001	1st angle	MOD-JACK
F F06.0240	DLE 06.07.18	tolerances unless otherwise specified	mm	SMT RA JACK
dr	date	angles	scale 1:1	POS. NARROW OUTSIDE
P NIZZI	06.07.18	linear		73306
D LEGRAND	06.07.18			CUSTOMER Drawing
P NIZZI	06.07.18			Sheet 2 of 3
D LEGRAND	06.07.18			A3
P NIZZI	06.07.18			



FCIconnect.com

Copyright FCI



CUSTOMER COPY FOR REFERENCE ONLY

mat'l. code		surface		tolerance		projection		product family	
		ISO 1302		ISO 406 ISO 1001		mm		MOD JACK	
ltr	ec'n no	dr	date	tolerances unless otherwise specified		scale 2:1		title	
A	F04-0363 DLE	04.10.18	04.10.18	±0.13				SMT RA JACK	
B	F06-0240 DLE	06.07.18	06.07.18					4 POS NARROW OUTSIDE	
sheet		revision		engr		dwg no		sheet 3 of -	
index		sheet		D LEGRAND		73306		A4	
				P NZZI		CUSTOMER Drawing			
				D LEGRAND					
				P NZ					

form A4

2 PPS: Rev :N

STATUS:Released Printed: Feb 14, 2020