



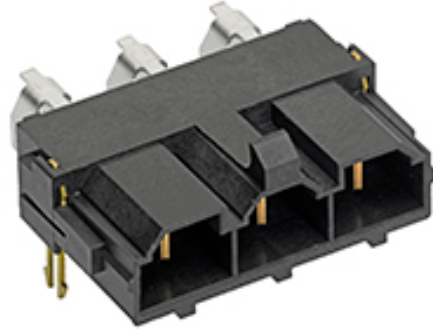
Part Number : [428206212](#)

Product Description : 10.00mm Pitch Mini-Fit Sr. Header, Single Row, Right-Angle, 1.57mm PCB Thickness, Tin (Sn) Plating, 6 Circuits, USE NYE LUBE ON MATING SURFACES

Series Number : 42820

Status : Active

Product Category : PCB Headers and Receptacles



Documents & Resources

Drawings

[Drawing 428206212_sd.pdf](#)

[Packaging Design Drawing PK-42820-910-001.pdf](#)

Specifications


[Application Specification AS-42815-001-001.pdf](#)

[Product Specification PS-42815-001-001.pdf](#)

[Product Specification TS-42815-001-001.pdf](#)

Product Environment Compliance

Compliance

GADSL/IMDS	Compliant with Exemption 44; 33
China RoHS	
EU ELV	Not Relevant
Low-Halogen Status	Not Low-Halogen per IEC 61249-2-21
REACH SVHC	Not Contained per D(2023)3788-DC (14 Jun 2023)
EU RoHS	Compliant per EU 2015/863

Multiple Part Product Compliance Statements

- Eu RoHS
- REACH SVHC
- Low-Halogen

Multiple Part Industry Compliance Documents

- IPC 1752A Class C

- IPC 1752A Class D
- Molex Product Compliance Declaration
- IEC-62474
- chemSHERPA (xml)

EU RoHS Certificate of Compliance

Part Details

General

Status	Active
Category	PCB Headers and Receptacles
Series	42820
Description	10.00mm Pitch Mini-Fit Sr. Header, Single Row, Right-Angle, 1.57mm PCB Thickness, Tin (Sn) Plating, 6 Circuits, USE NYE LUBE ON MATING SURFACES
Application	Power, Wire-to-Board
Comments	WHEN USING OVERALL TIN PLATED TERMINALS: FOR APPLICATIONS INVOLVING VIBRATION AND/OR THERMAL CYCLING, MOLEX STRONGLY RECOMMENDS THE USE OF NYE LUBRICANT (NYOGEL 7600) ON THE MATING SURFACES OF THE TERMINAL
Component Type	PCB Header
Product Family	Mini-Fit Sr. Power Connectors
Product Name	Mini-Fit Sr.
UPC	800754383110

Agency

UL	E29179
----	--------

Electrical

Current - Maximum per Contact	50.0A
Voltage - Maximum	600V

Physical

Breakaway	No
Circuits (Loaded)	6

Circuits (maximum)	6
Color - Resin	Black
Durability (mating cycles max)	30
First Mate / Last Break	No
Flammability	94V-0
Glow-Wire Capable	No
Guide to Mating Part	No
Keying to Mating Part	None
Lock to Mating Part	Yes
Material - Metal	Brass
Material - Plating Mating	Tin
Material - Plating Termination	Tin
Material - Resin	High Temperature Thermoplastic
Net Weight	18.186/g
Number of Rows	1
Orientation	Right Angle
Packaging Type	Tube
PC Tail Length	3.50mm
PCB Locator	Yes
PCB Retention	Yes
PCB Thickness - Recommended	1.57mm
Pitch - Mating Interface	10.00mm
Pitch - Termination Interface	10.00mm
Plating min - Mating	2.540µm
Plating min - Termination	2.540µm
Polarized to Mating Part	Yes
Polarized to PCB	Yes
Shrouded	Fully
Stackable	No
Temperature Range - Operating	-40° to +105°C
Termination Interface Style	Through Hole

Solder Process Data

Max-Duration	30
Lead-Free Process Capability	SMC&WAVE

Max-Cycle	3
Max-Temp	235

Mates With / Use With

Mates with Part(s)

Description	Part Number
10.00mm Pitch Mini-Fit Sr. Single Row Receptacle Housings	<u>42816</u>

This document was generated on Dec 09, 2023