

Series 805 Mighty Mouse Triple-Start ACME Thread Receptacle 805-003 and 805-004 Ordering Information



Series 805



Three Shell Mounting Options: Jam nut with O-ring for rear panel mounting, square flange for front or rear panel mounting, or in-line receptacles for free-hanging cables.

Two Shell Styles: Choose integral band platform for direct attachment of a cable shield. Install a boot, or overmold a boot over the band platform. An accessory thread is available for attaching strain reliefs and backshells.

Gold-Plated Crimp Contacts are held in place with beryllium copper retention clips. Contacts are removable.

How To Order						
Sample Part Number	805-004	-02	NF	9-10	P	A
Series (See Table I)	805-003 = Receptacle with Banding Platform 805-004 = Receptacle with Accessory Thread					
Shell Style (See Table II)	-01 = In-line -02 = Square Flange Front or Rear Mount -12 = Square Flange Rear Mount Non-Locking Clinch Nuts -22 = Square Flange Rear Mount Locking Clinch Nuts -07 = Jam Nut for Rear Panel Mounting					
Shell Material and Finish	C = Aluminum / Black Anodize (Non-Conductive); RoHS Compliant M = Aluminum / Electroless Nickel; RoHS Compliant MT = Aluminum / Nickel-PTFE RoHS Compliant NF = Aluminum / Cadmium with Olive Drab Chromate ZNU = Aluminum / Zinc-Nickel with Black Chromate Z1 = Stainless Steel / Passivated; RoHS Compliant ZB = Stainless Steel / Olive Drab Chromate over Cadmium ZC = Stainless Steel / Zinc Cobalt Alloy/Black Chromate					
Shell Size - Insert Arrangement	See Contact Arrangements Page H-2					
Contact Type	With contacts P = Pin S = Socket	Without contacts A = Pin Connector, less contacts B = Socket Connector, less contacts	With 30 AWG Crimp Barrel G = #23 Pin H = #23 Socket			
Shell Key Positions (See Table III)	A = Normal B = Pos. B C = Pos. C D = Pos. D E = Pos. E F = Pos. F					

Table I: Series	
805-003 Receptacle with Banding Platform	805-004 Receptacle with Accessory Thread

Table II: Shell Style		
-01 In-line Receptacle	-02, -12, -22 Square Flange	-07 Jam Nut



Dimensions in Inches (millimeters) are subject to change without notice.

Series 805 Mighty Mouse Triple-Start ACME Thread Receptacle 805-003 and 805-004 Shell Style -01 Dimensions

In-line cable receptacle - shell style 01

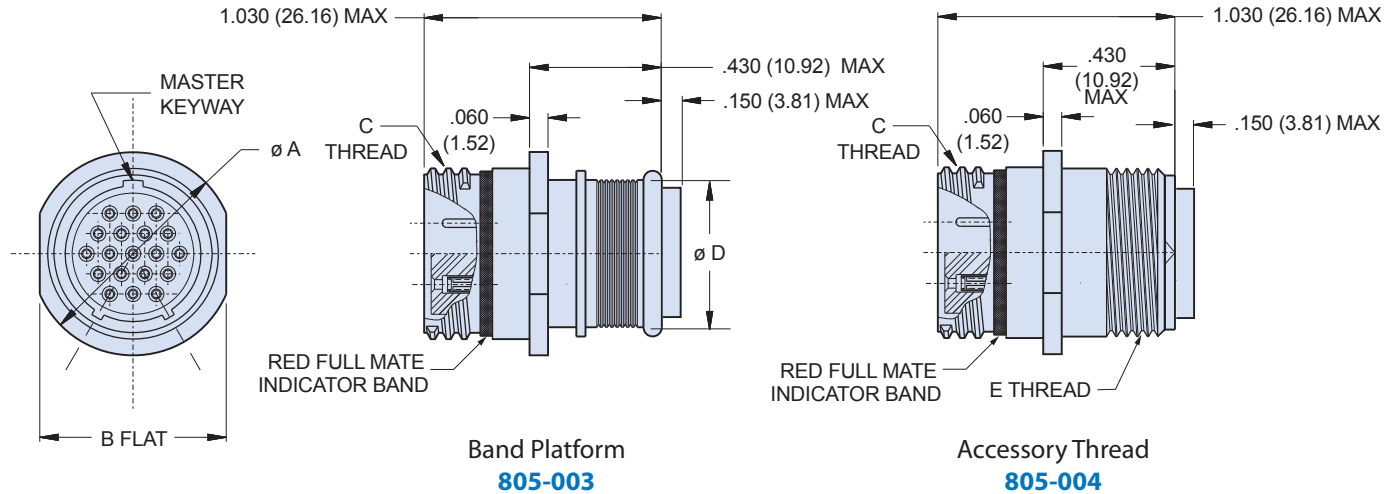
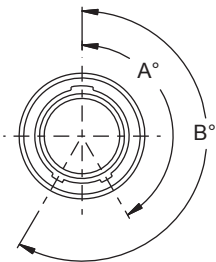


Table III: Key Positions



Key Position	Key Rotation	
	A	B
Normal (A)	150°	210°
B	75°	210°
C	95°	230°
D	140°	275°
E	75°	275°
F	95°	210°

Dimensions

Shell Size	Ø A		B Flat		C Thread	Ø D		E Accessory Thread
	In.	mm.	In.	mm.		In.	mm.	
8	.540	13.72	.510	12.95	.5000-1P-.3L-TS-2A	.316	8.05	.3750-32 UNEF-2A
9	.605	15.37	.575	14.61	.5625-1P-.3L-TS-2A	.397	10.08	.4375-28 UNEF-2A
10	.668	16.96	.638	16.21	.6250-1P-.3L-TS-2A	.472	12.01	.5000-28 UNEF-2A
11	.730	18.54	.700	17.78	.6875-1P-.3L-TS-2A	.519	13.18	.5625-24 UNEF-2A
12	.793	20.14	.763	19.38	.7500-1P-.3L-TS-2A	.585	14.86	.6250-24 UNEF-2A
13	.855	21.72	.825	20.96	.8125-1P-.3L-TS-2A	.646	16.41	.6875-24 UNEF-2A
15	.980	24.89	.950	24.13	.9375-1P-.3L-TS-2A	.687	17.45	.7500-20 UNEF-2A
18	1.165	29.59	1.135	28.83	1.1250-1P-.3L-TS-2A	.884	22.45	.9375-20 UNEF-2A
19	1.235	31.37	1.205	30.61	1.1875-1P-.3L-TS-2A	.884	22.45	.9375-20 UNEF-2A
21	1.360	34.54	1.330	33.78	1.3125-1P-.3L-TS-2A	1.003	25.48	1.0625-18 UNEF-2A
23	1.485	37.72	1.455	36.96	1.4375-1P-.3L-TS-2A	1.134	28.80	1.1875-18 UNEF-2A

NOTES

Performance Specifications

- Immersion, mated: MIL-STD-810 Method 512. One meter for one hour.

Materials and Finishes

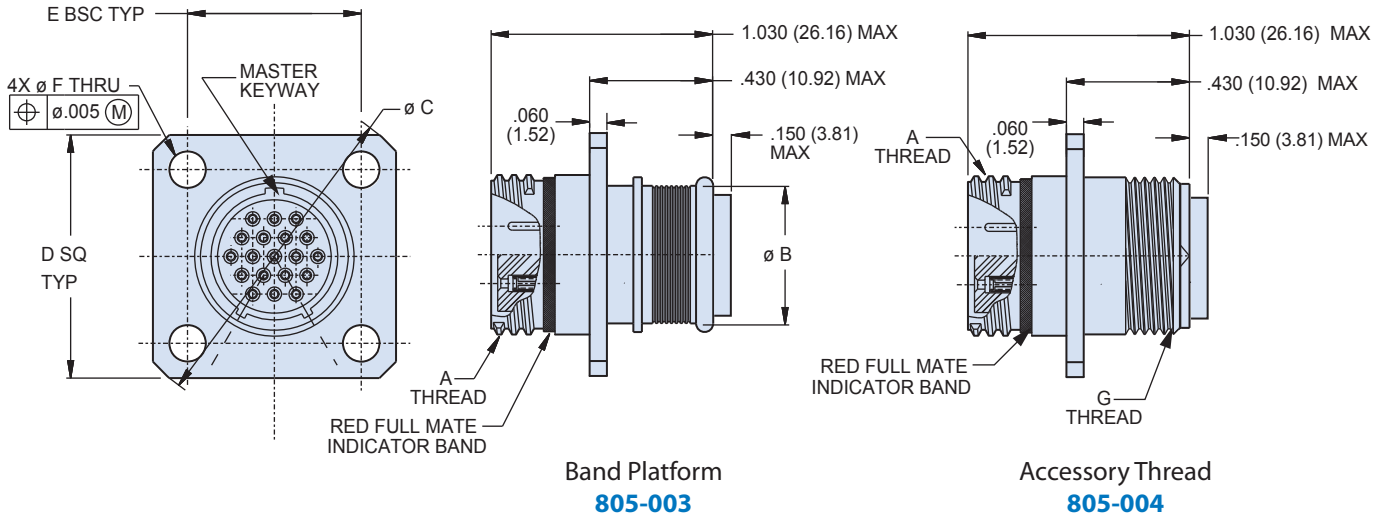
- Connector shell: aluminum or stainless steel
- Insulator: high-grade rigid dielectric
- Seals: fluorosilicone rubber, blue
- Pin contact: copper alloy, gold over nickel plating
- Socket contact: copper alloy, gold over nickel plating, with SST hood
- Contact retainer clip: beryllium copper, unplated

**Series 805 Mighty Mouse
Triple-Start ACME Thread Receptacle
805-003 and 805-004 Shell Style -02 Dimensions**



Series 805

Square flange, front or rear panel mount receptacle - shell style 02

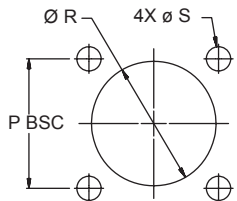


**Band Platform
805-003**

**Accessory Thread
805-004**

Dimensions												
Shell Size	A Thread	Ø B		Ø C		D SQ TYP		E BSC		Ø F		G Accessory Thread
		In.	mm.	In.	mm.	In.	mm.	In.	mm.	In. ± .003	mm. ± .08	
8	.5000-1P-3L-TS-2A	.316	8.05	1.150	29.21	.850	21.59	.660	16.76	.096 .091	2.44 2.31	.3750-32 UNEF-2A
9	.5625-1P-3L-TS-2A	.397	10.08	1.230	31.24	.913	23.19	.723	18.36			.4375-28 UNEF-2A
10	.6250-1P-3L-TS-2A	.472	12.01	1.330	33.78	.975	24.77	.785	19.94			.5000-28 UNEF-2A
11	.6875-1P-3L-TS-2A	.519	13.18	1.410	35.81	1.039	26.39	.848	21.54			.5625-24 UNEF-2A
12	.7500-1P-3L-TS-2A	.585	14.86	1.500	38.10	1.099	27.91	.909	23.09			.6250-24 UNEF-2A
13	.8125-1P-3L-TS-2A	.646	16.41	1.590	40.39	1.163	29.54	.973	24.71			.6875-24 UNEF-2A
15	.9375-1P-3L-TS-2A	.687	17.45	1.750	44.45	1.288	32.74	1.058	26.87	.130 .126	3.30 3.20	.7500-20 UNEF-2A
18	1.1250-1P-3L-TS-2A	.884	22.45	2.000	50.80	1.475	37.47	1.255	31.88			.9375-20 UNEF-2A
19	1.1875-1P-3L-TS-2A	.884	22.45	2.094	53.19	1.537	71.06	1.327	33.71			.9375-20 UNEF-2A
21	1.3125-1P-3L-TS-2A	1.003	25.48	2.270	57.66	1.663	42.24	1.452	40.39			1.0625-18 UNEF-2A
23	1.4375-1P-3L-TS-2A	1.134	28.80	2.440	61.98	1.787	45.39	1.570	39.88			1.1875-18 UNEF-2A

Square Flange Panel Cut Out Dimensions													
Shell Size	P Bsc		Ø R		Ø S		Shell Size	P Bsc		Ø R		Ø S	
	In.	mm.	In.	mm.	In.	mm.		In.	mm.	In.	mm.	In.	mm.
8	0.660	16.76	.515	13.08	.096 .091	2.43 2.31	15	1.058	26.87	.953	24.21	.130 .126	3.30 3.20
9	0.723	18.36	.578	14.68			18	1.255	31.88	1.140	28.96		
10	0.785	19.94	.640	16.26			19	1.327	33.71	1.203	30.56		
11	0.848	21.54	.703	17.86			21	1.452	36.88	1.328	33.73		
12	0.909	23.09	.765	19.43			23	1.570	39.88	1.453	36.91		
13	0.973	24.71	.828	21.03									



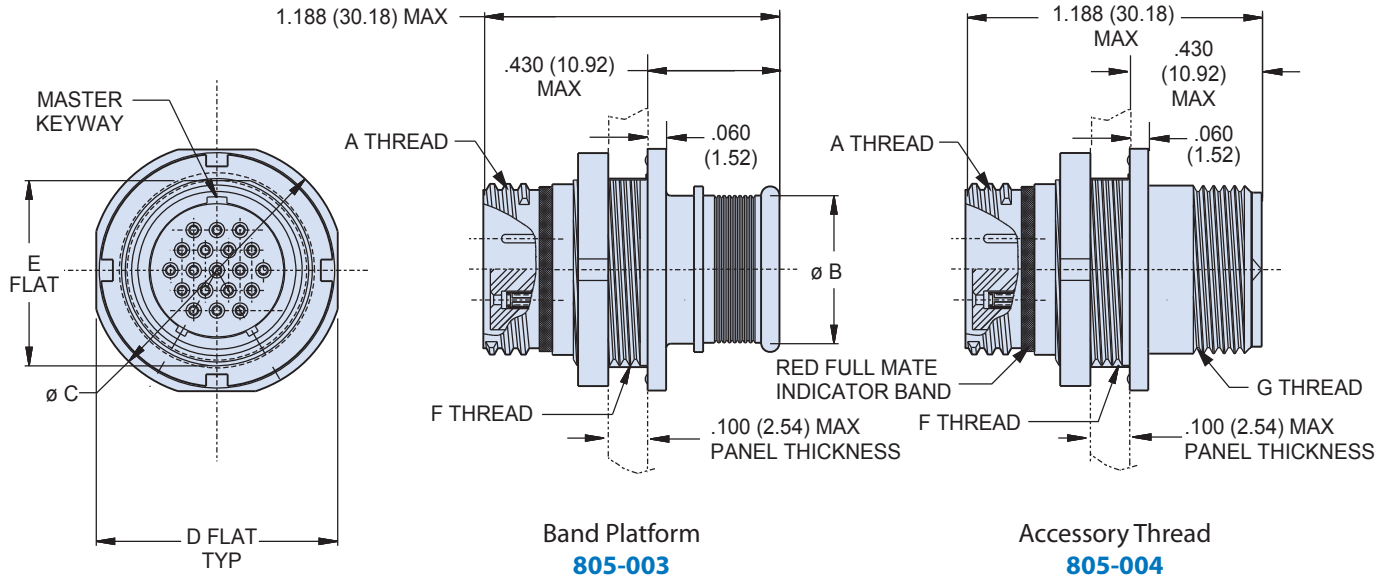
Dimensions in Inches (millimeters) are subject to change without notice.





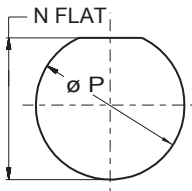
Series 805 Mighty Mouse Triple-Start ACME Thread Receptacle 805-003 and 805-004 Shell Style -07 Dimensions

Jam nut, rear panel mount receptacle - shell style 07



Dimensions											
Shell Size	A Thread	Ø B		Ø C		D Flat		E Flat		F Threads	G Accessory Thread
		In.	mm.	In.	mm.	In.	mm.	In.	mm.		
8	.5000-1P-3L-TS-2A	.316	8.03	.760	19.30	.730	18.54	.535	13.59	.5625-28 UNEF-2A	.3750-32 UNEF-2A
9	.5625-1P-3L-TS-2A	.397	10.08	.880	22.35	.850	21.59	.661	16.79	.6875-28 UN-2A	.4375-28 UNEF-2A
10	.6250-1P-3L-TS-2A	.472	11.99	.880	22.35	.850	21.59	.661	16.79	.6875-28 UN-2A	.5000-28 UNEF-2A
11	.6875-1P-3L-TS-2A	.519	13.18	.955	24.26	.925	23.50	.721	18.31	.7500-28 UN-2A	.5625-24 UNEF-2A
12	.7500-1P-3L-TS-2A	.585	14.86	1.060	26.92	1.035	26.29	.784	19.91	.8125-28 UN-2A	.6250-24 UNEF-2A
13	.8125-1P-3L-TS-2A	.646	16.41	1.120	28.45	1.090	27.69	.843	21.41	.8750-28 UN-2A	.6875-24 UNEF-2A
15	.9375-1P-3L-TS-2A	.687	17.45	1.203	30.56	1.173	29.79	.970	24.64	1.0000-28 UN-2A	.7500-20 UNEF-2A
18	1.1250-1P-3L-TS-2A	.884	22.45	1.389	35.28	1.359	34.52	1.147	29.13	1.1875-28 UN-2A	.9375-20 UNEF-2A
19	1.1875-1P-3L-TS-2A	.884	22.45	1.450	36.83	1.420	36.07	1.221	31.01	1.2500-28 UN-2A	.9375-20 UNEF-2A
21	1.3125-1P-3L-TS-2A	1.003	25.48	1.590	40.39	1.560	39.62	1.350	34.29	1.3750-28 UN-2A	1.0625-18 UNEF-2A
23	1.4375-1P-3L-TS-2A	1.134	28.80	1.705	43.31	1.675	42.55	1.470	37.34	1.5000-28 UN-2A	1.1875-18 UNEF-2A

H



Jam Nut Panel Cutout Dimensions								
Shell Size	N Flat	Ø P	Shell Size	N Flat	Ø P	Shell Size	N Flat	Ø P
8	.545 (13.84)	.572 (14.53)	12	.794 (20.17)	.822 (20.88)	19	1.231 (31.27)	1.260 (32.00)
	.541 (13.74)	.567 (14.40)		.790 (20.07)	.817 (20.75)		1.227 (31.17)	1.255 (31.88)
9	.671 (17.04)	.698 (17.73)	13	.851 (21.62)	.885 (22.48)	21	1.358 (34.49)	1.383 (35.13)
	.667 (16.94)	.693 (17.60)		.847 (21.51)	.881 (22.38)		1.354 (34.39)	1.381 (35.08)
10	.671 (17.04)	.698 (17.73)	15	.982 (24.94)	1.010 (25.65)	23	1.480 (37.59)	1.510 (38.35)
	.667 (16.94)	.693 (17.60)		.976 (24.79)	1.006 (25.55)		1.476 (37.49)	1.505 (38.23)
11	.731 (18.57)	.760 (19.30)	18	1.157 (29.39)	1.198 (30.43)			
	.727 (18.47)	.755 (19.18)		1.153 (29.29)	1.193 (30.30)			

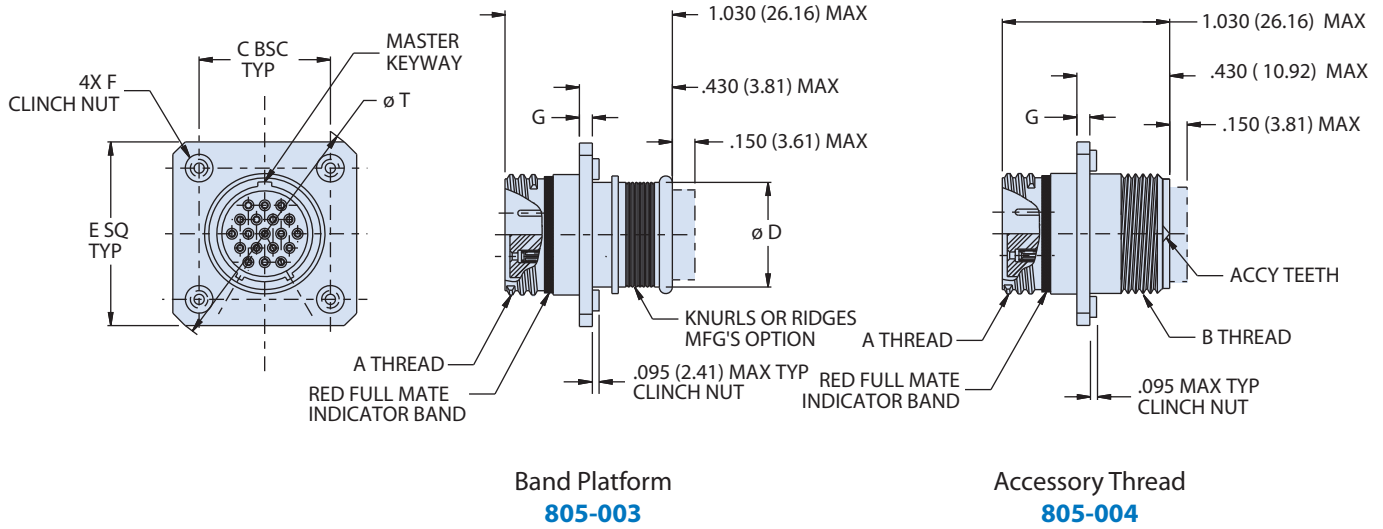
Dimensions in Inches (millimeters) are subject to change without notice.

Series 805 Mighty Mouse Triple-Start ACME Thread Receptacle with Clinch Nuts 805-003 and 805-004 Shell Style -12/-22 Dimensions



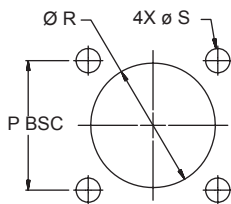
Series 805

Square flange, rear panel mount receptacle with clinch nut - shell style 12/22



Shell Size	Dimensions										F Clinch Nuts	G
	A Thread	B Thread	C BSC		Ø D		E SQ		Ø T			
			in.	mm.	in.	mm.	in.	mm.	in.	mm.		
8	.5000-.1P-.3L-TS-2A	.3750-32 UNEF-2A	0.660	16.76	1.194	30.33	0.920	23.37	1.194	30.33	2-56	.030
9	.5625-.1P-.3L-TS-2A	.4375-28 UNEF-2A	0.723	18.36	1.283	32.59	0.983	24.97	1.283	32.59		
10	.6250-.1P-.3L-TS-2A	.5000-28 UNEF-2A	0.785	19.94	1.371	34.82	1.045	26.54	1.371	34.82		
11	.6875-.1P-.3L-TS-2A	.5625-24 UNEF-2A	0.848	21.54	1.460	37.08	1.104	28.04	1.460	37.08		
12	.7500-.1P-.3L-TS-2A	.6250-24 UNEF-2A	0.909	23.09	1.546	39.27	1.169	29.69	1.546	39.27		
13	.8125-.1P-.3L-TS-2A	.6875-24 UNEF-2A	0.973	24.71	1.637	41.58	1.233	31.32	1.637	41.58		
15	.9375-.1P-.3L-TS-2A	.7500-20 UNEF-2A	1.058	26.87	1.817	46.15	1.378	35.00	1.817	46.15	4-40	.060
18	1.1250-.1P-.3L-TS-2A	.9375-20 UNEF-2A	1.255	31.88	2.096	53.24	1.575	40.01	2.096	53.24		
19	1.1875-.1P-.3L-TS-2A	.9375-20 UNEF-2A	1.327	33.71	2.197	55.80	1.647	41.83	2.197	55.80		
21	1.3125-.1P-.3L-TS-2A	1.0625-18 UNEF-2A	1.452	36.88	2.380	60.45	1.772	45.01	2.380	60.45		
23	1.4375-.1P-.3L-TS-2A	1.1875-18 UNEF-2A	1.570	39.88	2.541	64.54	1.890	48.01	2.541	64.54		

Square Flange Panel Cut Out Dimensions													
Shell Size	P Bsc		Ø R		Ø S		Shell Size	P Bsc		Ø R		Ø S	
	In.	mm.	In.	mm.	In.	mm.		In.	mm.	In.	mm.	In.	mm.
8	0.660	16.76	.151	13.08	.096 .091	2.43 2.31	15	1.058	26.87	.953	24.21	.130 .126	3.30 3.20
9	0.723	18.36	.178	14.68			18	1.255	31.88	1.140	28.96		
10	0.785	19.94	.164	16.26			19	1.327	33.71	1.203	30.56		
11	0.848	21.54	.173	17.86			21	1.452	36.88	1.328	33.73		
12	0.909	23.09	.165	19.43			23	1.570	39.88	1.453	36.91		
13	0.973	24.71	.128	21.03									



Dimensions in Inches (millimeters) are subject to change without notice.

© 2014 Glenair, Inc. Series 80 Mighty Mouse U.S. CAGE Code 06324 Printed in U.S.A.

GLENAIR, INC. • 1211 AIR WAY • GLENDALE, CA 91201-2497 • 818-247-6000 • FAX 818-500-9912
www.glenair.com H-17 E-Mail: sales@glenair.com

