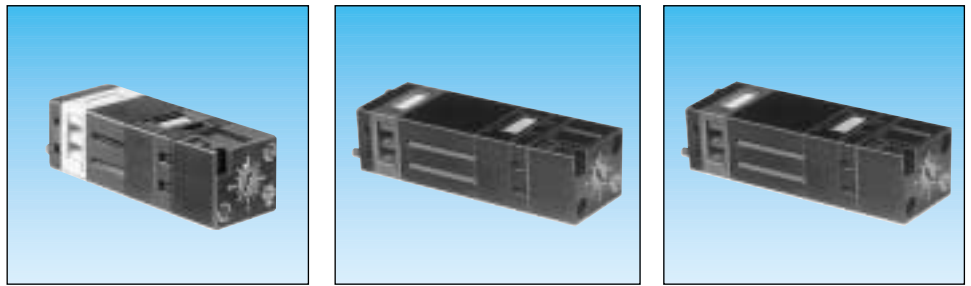


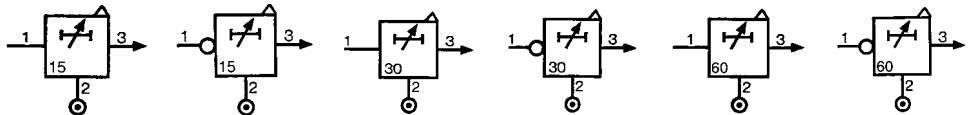
# Timers (with adjustable timing)



## Part numbers

		81 503 710	81 506 710	81 503 720	81 506 720	81 503 725	81 506 725
Function	positive	●	—	●	—	●	—
	negative	—	●	—	●	—	●

## Symbol



## Characteristics

Timing	s	0.1 • 15	0.1 • 15	0.1 • 30	0.1 • 30	0.1 • 60	0.1 • 60
Operating pressure	bar	2 → 8	2 → 8	2 → 8	2 → 8	2 → 8	2 → 8
Flow at 6 bars	NI/min	170	170	170	170	170	170
Orifice diameter	mm	2.7	2.7	2.7	2.7	2.7	2.7
Accuracy	%	± 5	± 5	± 5	± 5	± 5	± 5
Min. reset time	s	<0.1	<0.1	<0.1	<0.1	<0.1	<0.1
Connection		●	●	●	●	●	●
Operating temperature	°C	-5 +50	-5 +50	-5 +50	-5 +50	-5 +50	-5 +50
Mechanical life	operations	>10 <sup>7</sup>	>10 <sup>7</sup>	>10 <sup>7</sup>	>10 <sup>7</sup>	>10 <sup>7</sup>	>10 <sup>7</sup>
Weight	g	90	90	100	100	120	120

## Accessories

Panel mounting adaptor		79 451 698	79 451 698	79 451 903	79 451 903	—	—
Weight	g	53	53	53	53	—	—

## Principle

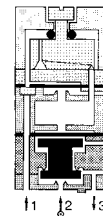
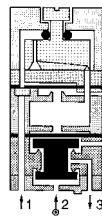
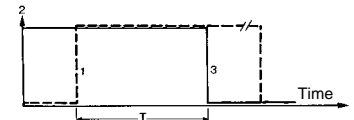
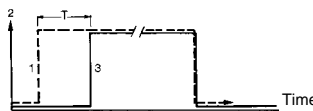
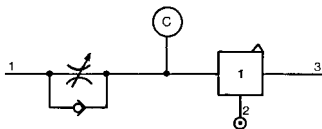
The operation of these pneumatic timers is similar to that of electronic timers (circuit with capacitor/resistor)

## Principle of operation

with positive output

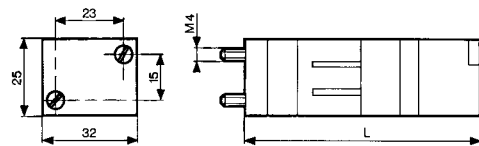
with negative output

## Timing by charging of reservoir

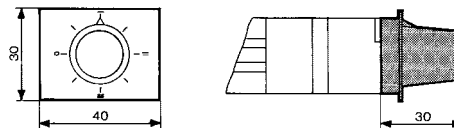


The reservoir fills via the flow restrictor until the switching point of the timer output is reached (positive or negative). The non-return valve allows the reservoir to be emptied rapidly for the next timing.

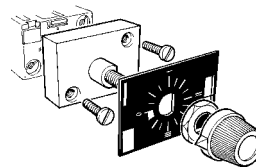
## Dimensions



## Adaptor 79 451 ...



Part numbers	L (mm)
81 503 710 - 81 506 710	78
81 503 720 - 81 506 720	92
81 503 725 - 81 506 725	125



For panel mounting, a pre-drilled hole Ø 10.5 mm is required

## To order, specify :

Standard products

1

Part number

2

Accessory

Standard products,  
non stocked

Example : Timers (with adjustable timing) - 81 503 710 - Adaptor 79 451 698