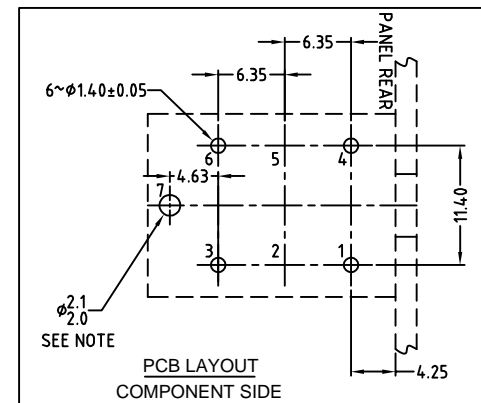
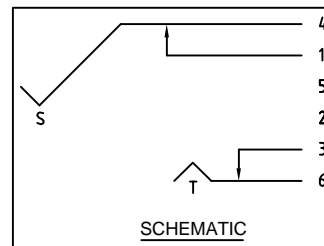
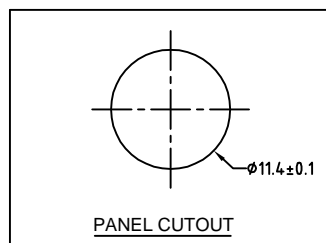
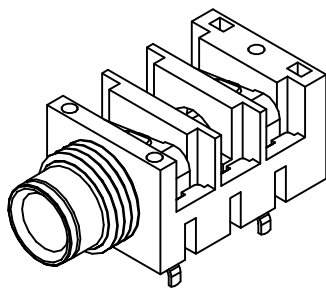
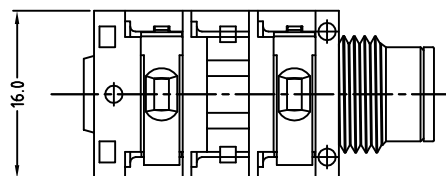
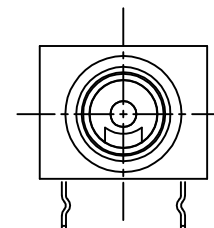
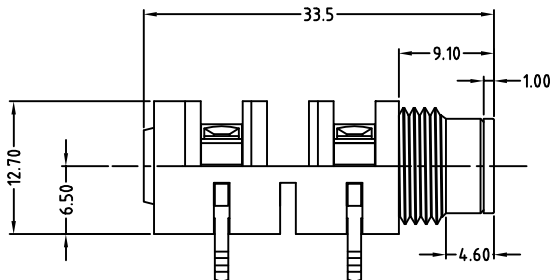


SCALE 6:1



NOTE: OPTIONAL MOUNTING HOLE FOR SELF-TAPPING M2 SCREW

UNLESS OTHERWISE SPECIFIED TOLERANCE TO BE		THIS DOCUMENT IS THE PROPERTY OF AMPHENOL AUSTRALIA PTY. LTD. NO PART THEREOF MAY BE REPRODUCED AND USED WITHOUT THE PRIOR WRITTEN CONSENT OF THE OWNER				0	FIRST ISSUE	L.V	18-06-02	----
LINEAR	ANGULAR	CAD FILE: 55010285502220	DRN: L.V	DATE: 18-06-02	TITLE:	REV.	CHANGE DETAILS	BY	DATE	CHG/No
X ± 0.5	X° ± 1°	MATL: REFER TO COMPONENT	CKD: M.N.H	DATE: 12-12-02	1/4" PHONE MONO JACK CUSTOMER DRAWING					
X.X ± 0.1	X°X' ± 30'	DO NOT SCALE	FINISH: REFER TO COMPONENT	APP'D: P.M	DATE: 13-12-02					
X.XX ± 0.05	X°X'X" ± 15'	BREAK ALL SHARP EDGES AND REMOVE ALL BURRS								
DIMENSIONS IN MILLIMETRES		THIRD ANGLE PROJECTION		SCALE: 2:1 UOS	PART No: ACJM - HHDR	SIZE: A3	55010285-502-2	SHEET 2 OF 2		

Amphenol

Amphenol Australia Pty Ltd, 2 Fireweys Blvd, Keysborough, Vic 3173
DRAWING NO.