

# REED SWITCH MKA-07101

# CONTACT FORM A NORMALLY OPEN CONTACTS

Reed relays, Security, Limit switching, Telecoms, Office equipment

Switching current 0,1 A

Switching power 1 W, VA

Switching voltage 24 V

Pull in range 7...35 AT

## Electrical Data

Release range, AT, min	4
Carry current, A	0,3
Breakdown voltage	
V, not less, AC/DC	110/150
Resetting Ratio	0,35...0,95
Contact resistance, $\Omega$ , not more	0,2
Operating time including bounce, ms, not more	0,3
Release time including bounce ms, not more	0,1
Capacitance, pF, not more	0,4
Insulation resistance, G $\Omega$ , not less	1
Operating frequency, Hz	400
Switching current frequency, kHz, not more	10

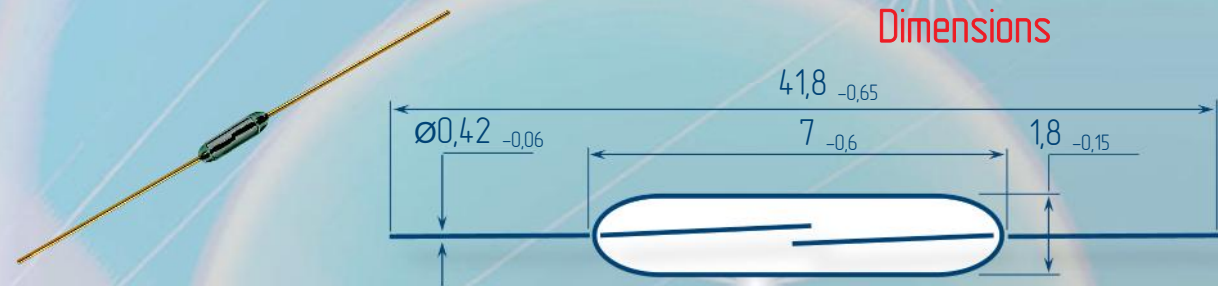
## Environmental Data

Contact material	Ru
Life expectancy, switching cycles x10 <sup>6</sup> max load power... low load power	1...50
Vibration (1...500 Hz), g, not more	10
Resonant frequency, Hz	12000
Shock (1±0,3) ms, g, not more	150
Weight, g, not more	0,07
Operating temperature, °C	-60...125
Humidity, %, not more	98

## Order information

Delivery of reed switches with formed and/or cropped leads and with narrow pull in ranges is available by agreements.

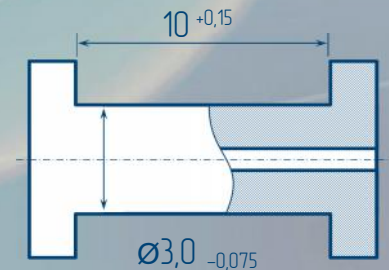
## Dimensions



## Certificates



## Test Coil



5000 turns, wire Ø0,063 mm  
coil resistance 580



RYAZAN METAL CERAMICS INSTRUMENTATION PLANT, JSC  
51V, Novaya St., 390027, Ryazan, Russia  
Phone: +7 (4912) 240-234, Факс: +7 (4912) 240-234 E-mail: ives@rmcip.ru

Update on 19 November 2013

