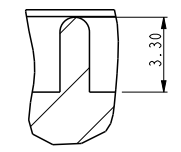
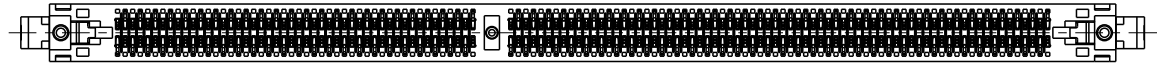
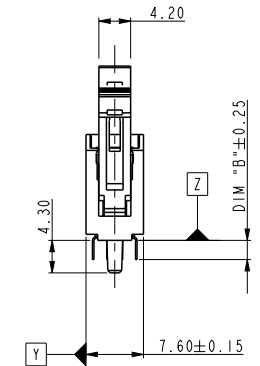
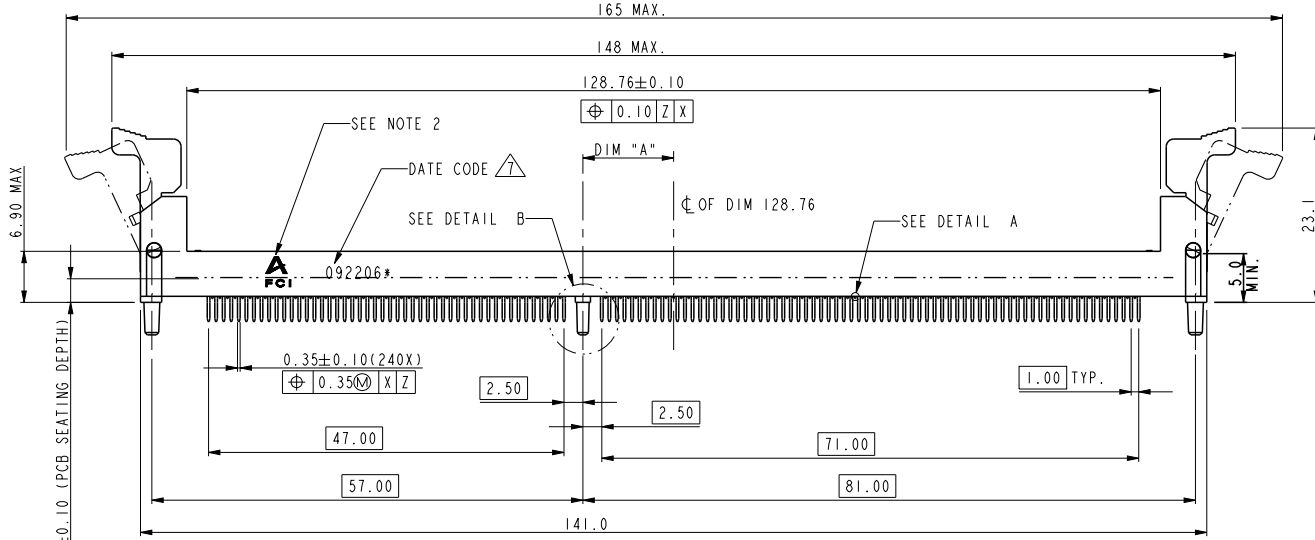
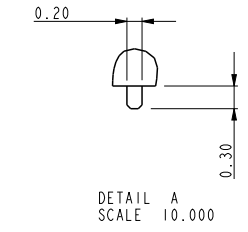
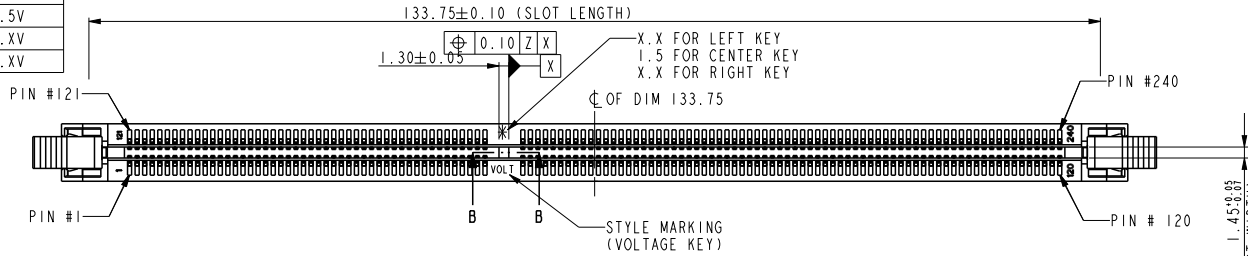
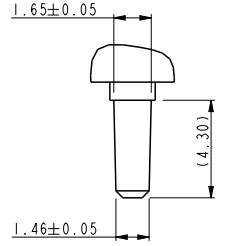
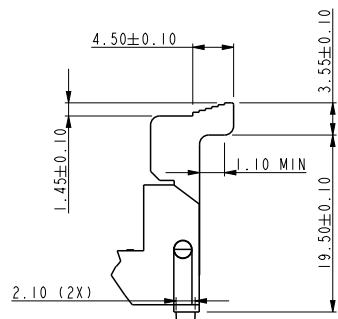


PART NO.	DIM "A"	DESCRIPTION
10081531-1****	12.00	1.5V
10081531-2****	11.00	X.XV
10081531-3****	13.00	X.XV



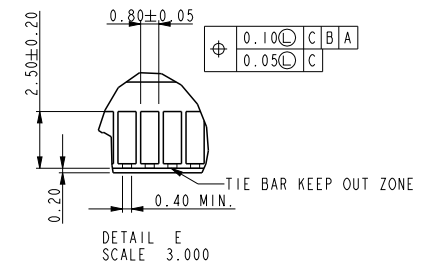
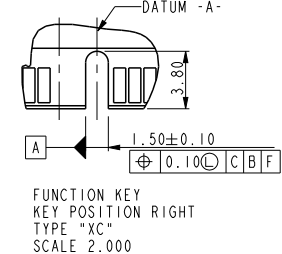
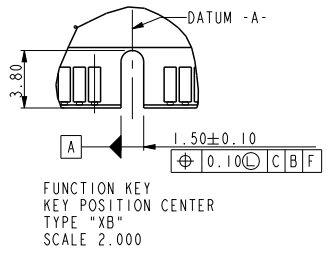
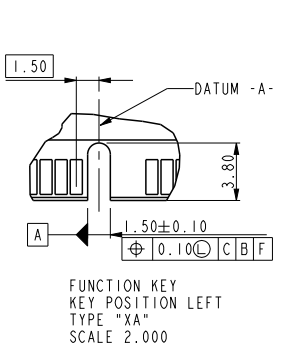
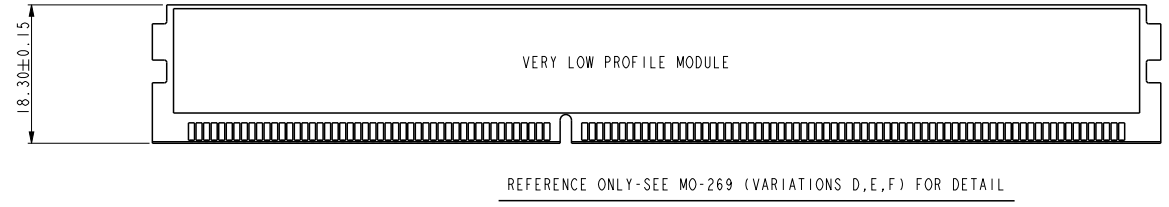
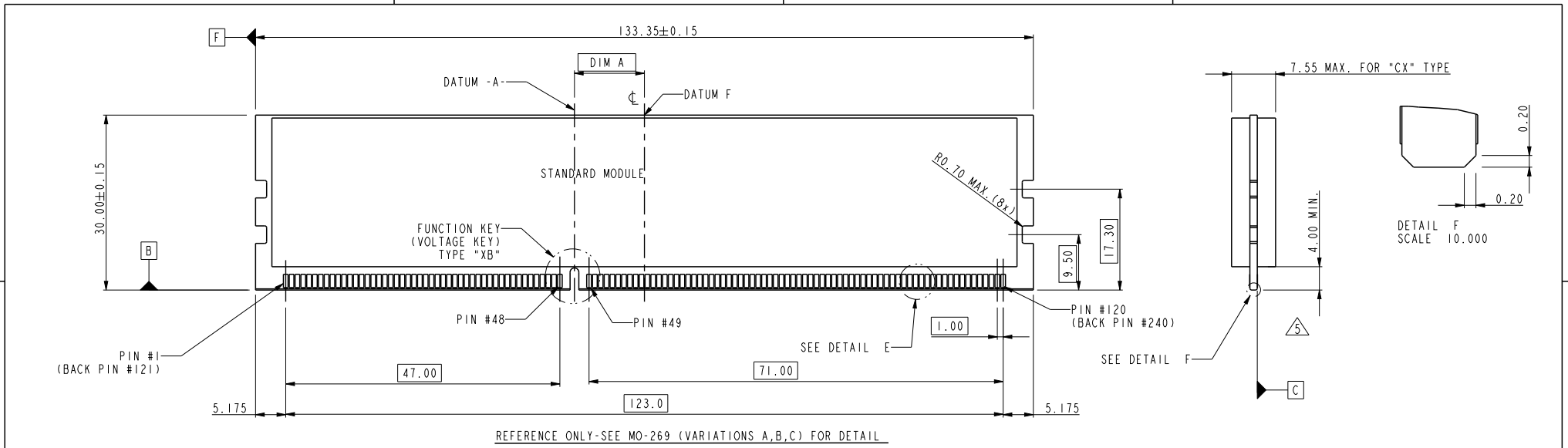
tolerance unless otherwise specified	
linear	.X ± .38
	.XX ± .25
	.XXX ± .13
angles	0° ± 2°



SCALE 1.200

DETAIL B
SCALE 3.000

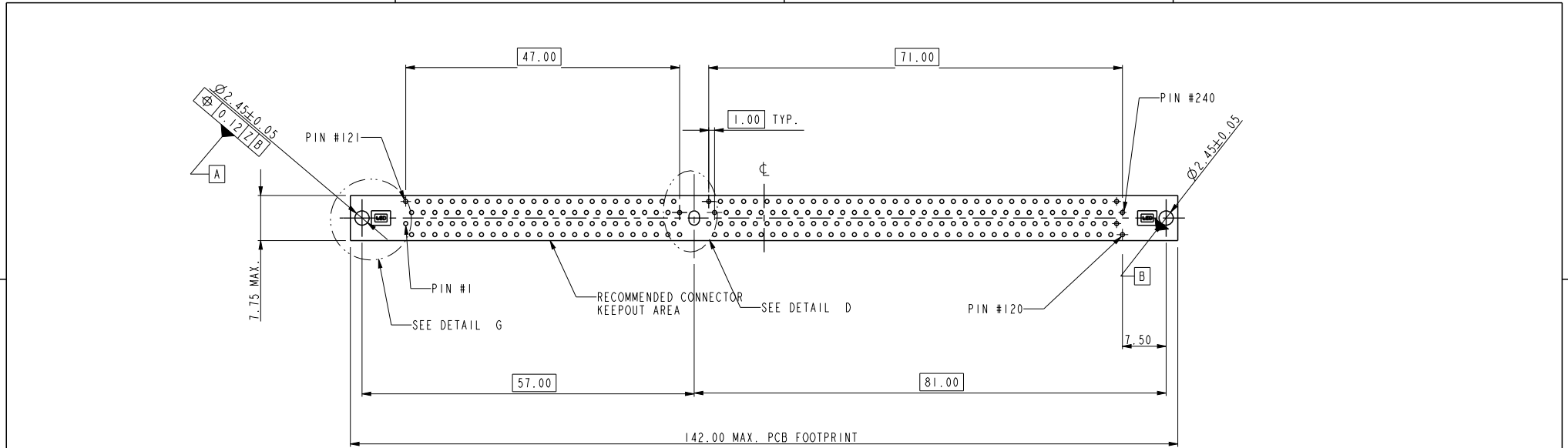
dr	Rick Bian	2010/07/03	projection 	MM 	size	A4	scale	0.500		
eng	Jeny Ren	2018/04/28			ecn no	ELX-DG-29895-1				
chr	-	-			rel level	Released				
appr	Nickor Zuo	2018/05/07	product family	-	dwg no	10081531		rev	E	
Amphenol FCI		title			DDR3 R-DIMM CONNECTOR			cat. no.		-
		title			PEG TYPE			Product - Customer Drw		sheet 1 of 4



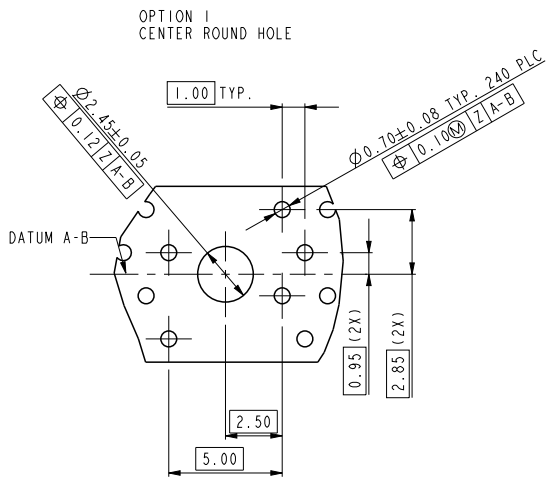
tolerance unless otherwise specified	
linear	.X ± .38 .XX ± .25 .XXX ± .13
angles	0° ± 2'

dr	Rick Bian	2010/07/03	projection	MM	size	A4	scale	0.500
eng	Jeny Ren	2018/04/28			ecn no ELX-DG-29895-1			
chr	-	-			rel level Released			
appr	Nickor Zuo	2018/05/07	product family			rev		
			title			dwg no		rev
			DDR3 R-DIMM CONNECTOR			10081531		E
			PEG TYPE					
cat. no.			Product - Customer Drw			sheet 2 of 4		

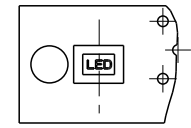
TYPE "XA"	X.X VOLTAGE
TYPE "XC"	X.X VOLTAGE
TYPE "XB"	1.5 VOLTAGE
SUB KEY POS #1	DESCRIPTION



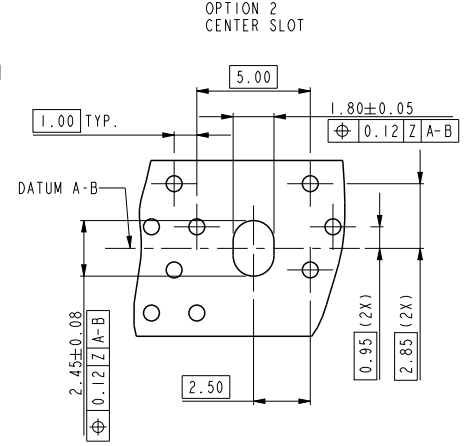
RECOMMENDED CIRCUIT BOARD HOLE LAYOUT



OPTION 1
CENTER ROUND HOLE



DETAIL G
SCALE 2.000



OPTION 2
CENTER SLOT

DETAIL D
SCALE 3.000

dr	Rick Bian	2010/07/03	projection 	MM 	size	A4	scale	0.500	
eng	Jeny Ren	2018/04/28			ecn no	ELX-DG-29895-1			
chr	-	-			rel level	Released			
appr	Nickor Zuo	2018/05/07	product family		rel level	Released			
Amphenol FCi		title			DDR3 R-DIMM CONNECTOR		dwg no		10081531
		title			PEG TYPE		rev		E
cat. no.		*			Product - Customer Drw		sheet 3 of 4		

A

B

C

D

A

B

C

D

10081531 - □ □ □ □

STYLE : MECHANICAL KEYING

- 1 : 1.5 VOLT. W/ CENTER KEY "XB"
- 2 : X.X VOLT. W/ LEFT KEY "XA"
- 3 : X.X VOLT. W/ RIGHT KEY "XC"

PLASTIC PEG LENTH

- 1 : 4.30

TAIL LENGTH

CODE	DIM "B"
1	2.67
2	3.18

PLATING

CODE	CONTACT	SOLDERTAIL	UNDERPLATE
2	15u" (0.38um) MIN. GOLD	100u" (2.54um) MIN. TIN/LEAD	50u" (1.27um) MIN. NICKEL OVERALL
3	30u" (0.76um) MIN. GOLD		
4	3u" (0.07um) MIN. GOLD	100u" (2.54um) MIN. 100% TIN	50u" (1.27um) MIN. NICKEL OVERALL
7LF	15u" (0.38um) MIN. GOLD		
8LF	30u" (0.76um) MIN. GOLD		
9LF	3u" (0.07um) MIN. GOLD		

COLOR OF HOUSING AND EJECTOR

- 0 : BLACK HOUSING + IVORY EJECTOR
- 1 : BLUE HOUSING + IVORY EJECTOR
- 2 : BLACK HOUSING + BLACK EJECTOR
- 3 : BLACK HOUSING + CLEAR EJECTOR
- 4 : BLUE HOUSING + CLEAR EJECTOR
- 5 : IVORY HOUSING + CLEAR EJECTOR
- 6 : BLACK HOUSING + BLUE EJECTOR
- 7 : IVORY HOUSING + IVORY EJECTOR
- 9 : IVORY HOUSING + BLACK EJECTOR

NOTES:

1. MATERIAL:
HOUSING: HIGH PERFORMANCE RESINS, GLASS FILLED UL94V-0 RATED.
EJECTOR: HIGH PERFORMANCE RESINS, GLASS FILLED UL94V-0 RATED.
TERMINAL: COPPER ALLOY.
METAL CLIP: COPPER ALLOY.
2. FCI LOGO TO BE APPROXIMATELY LOCATED AS SHOWN ON PRINT.
3. PRODUCT SPECIFICATION: GS-12-486.
4. PACKAGING SPECIFICATION: GS-14-899.
5. CARD THICKNESS APPLIES ACROSS TABS AND INCLUDES PLATING AND/OR METALIZATION.
6. LEADING EDGE OF CONTACT PADS SPECIFIED BY THE KEEP OUT ZONE SHALL BE FREE OF BURRS AND EXTERNAL TIE BARS. FOR OPTIMUM PERFORMANCE. THE TIE BAR IS TO BE ON AN INTERNAL LAYER SO THAT THE REMNANT CANNOT CAUSE CONTACT DAMAGE.
7. THE DATE CODE IS SHOWN "MMDDYY*"."*" MEANS PRODUCTION LINE CODE.
8. SOCKET IS COMPLIANT TO JEDEC SO-007 AND ACCEPTS JEDEC MODULE MO-269, VARIATIONS AA THRU FC.
9. THIS PRODUCT MEETS EUROPEAN UNION DIRECTIVES AND OTHER COUNTRY REGULATIONS AS DESCRIBED IN GS-22-008.
10. THE HOUSING WILL WITH STAND EXPOSURE TO 260°C PEAK TEMPERATURE FOR 10 SECONDS IN A WAVE SOLDER APPLICATION.
11. THE CLEAR LATCH CAN WITHSTAND MAX 174°C EXPOSURE TEMPERATUER.



dr	Rick Bian	2010/07/03	projection 	MM 	size	A4	scale	0.500
eng	Jeny Ren	2018/04/28			ecn no	ELX-DG-29895-1		
chr	-	-			rel level	Released		
appr	Nickor Zuo	2018/05/07	product family		rev	E		
Amphenol FCI		DDR3 R-DIMM CONNECTOR PEG TYPE			dwg no	10081531		
cat. no.		*	Product - Customer Drw		sheet 4 of 4			