



Bulb change via rear access with bayonet mechanism



Accessories

Sizes of Permanent Beacons



- Tamper-proof - bulb change via rear access with bayonet mechanism
- With anti-twist device (as accessory)
- Available with tube adaptor as free-standing beacon

i TECHNICAL SPECIFICATIONS:

Dimensions (Ø x Height):	57 mm x 54 mm (Protrusion from panel)
Housing:	PC/ABS-Blend Socket: PA-GF, high impact
Lens:	PC, transparent
Fixing:	Installation mounting for Ø 37 mm (PG29)
Connection:	Screw terminal max. 1.5 mm ² flex radial or axial laid
Operating voltage:	Max. 250 V
Bulb socket:	BA15d, 7 Watt max.
Bulb change:	Via rear access with bayonet mechanism
Bulb not included in assembly.	

🛒 ORDER SPECIFICATIONS:

Voltage	12-240 V
red	800 100 00
green	800 200 00
yellow	800 300 00
clear	800 400 00
blue	800 500 00

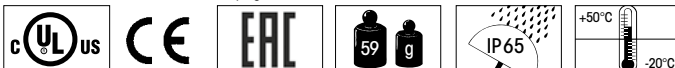
🏠 ACCESSORIES:

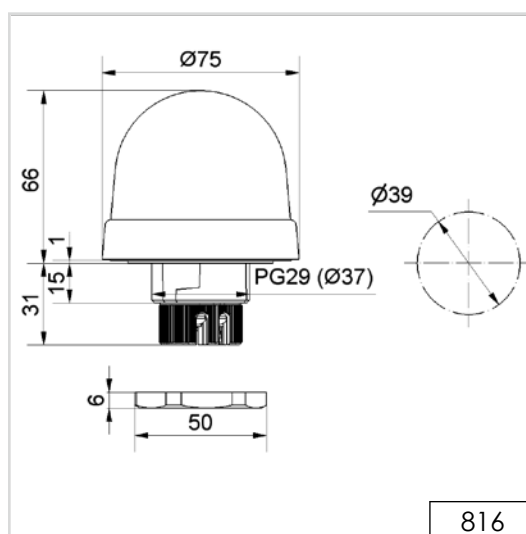
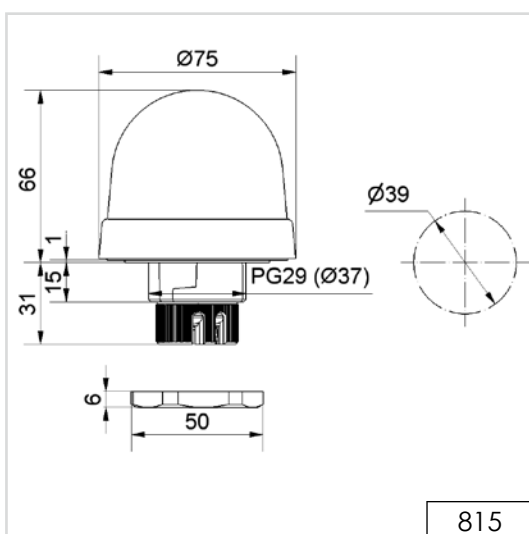
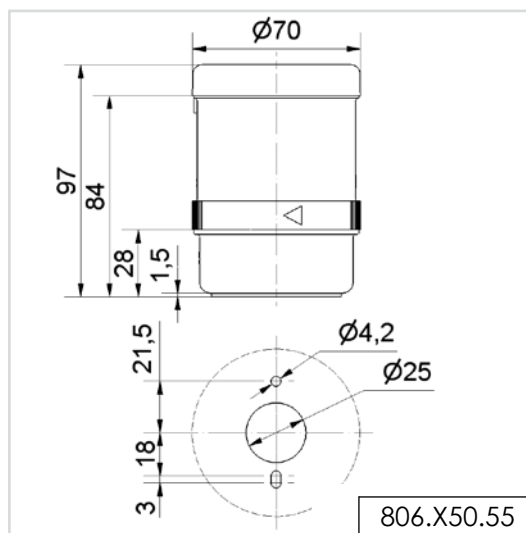
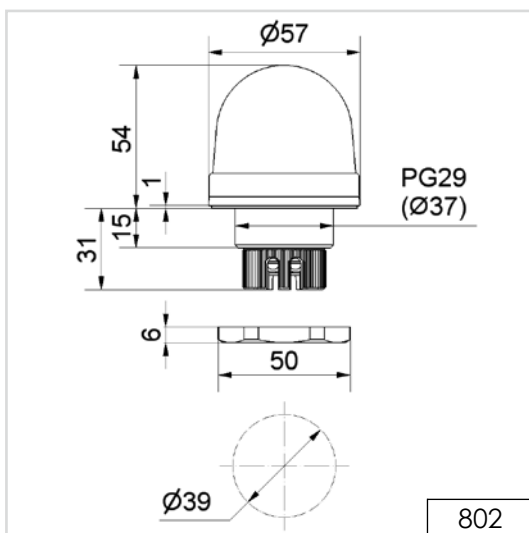
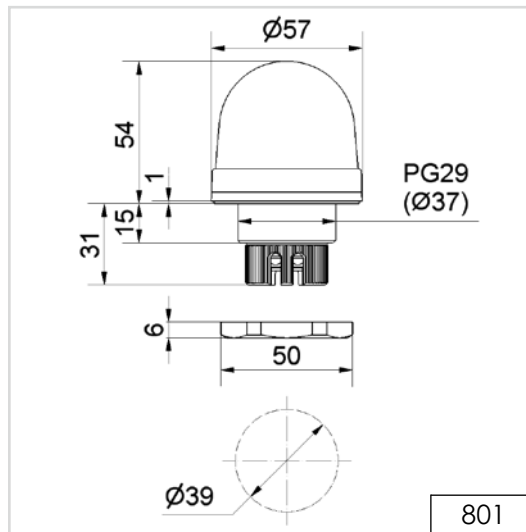
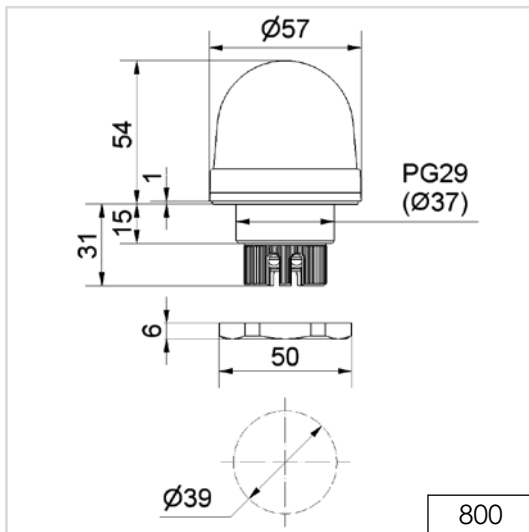
Bulb BA15d, 5 W, total length 42 mm					
Voltage	12 V	24 V	30 V	115 V	230 V
	955 840 34	955 840 35	955 840 32	955 840 57	955 840 38
Tube adaptor	975 812 01				
Base with integrated tube, Ø 25 mm, 110 mm long, plastic	975 840 10				
Base for tube mounting	975 840 90				
Base for base mounting	975 812 02				
Tube Ø 25 mm, all anodized aluminium					
100 mm long	975 845 10				
250 mm long	975 840 25				
400 mm long	975 840 40				
Anti-twist device	975 815 22				
Surface housing IP 65					
for 1 Installation Beacon	975 815 03				
for 2 Installation Beacons	975 815 07				
for 3 Installation Beacons	975 815 08				
for 4 Installation Beacons	975 109 05				

📐 TECHNICAL DIAGRAMS:

see page 315

See note on page 347





! ADDITIONAL INFORMATION:

You are welcome to request the technical diagrams in digital form. The relevant 3D models, instruction leaflets and connection diagrams can be obtained from us or downloaded from our homepage at any time.