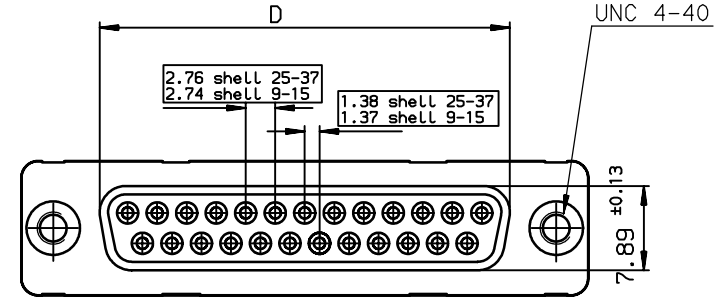
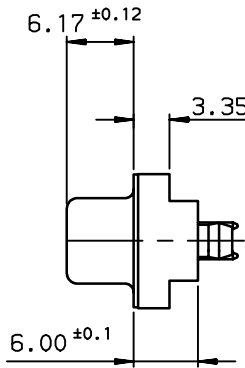
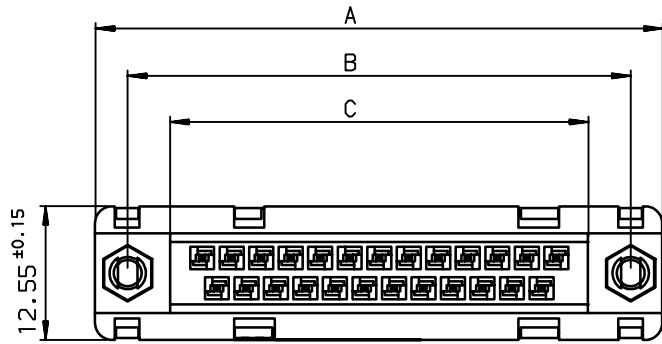
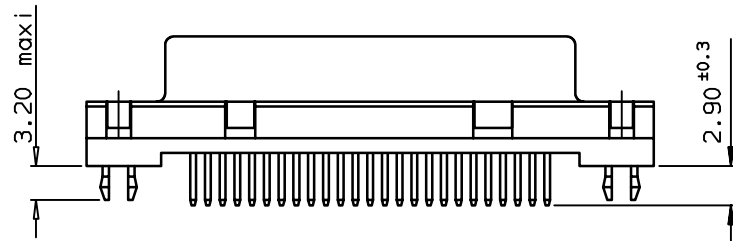


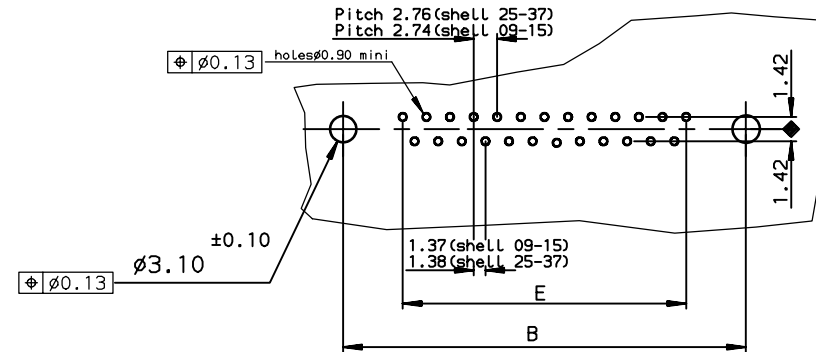
A



B



PC card drilling dimensions(after plating)
(thickness 1.60±0.20mm)



TIN LEAD PART NUMBER

SHELL	A±0.38	B±0.12	C±0.10	D±0.25	E±0.07	PART NUMBER
09	30.81	24.99	16.96	16.21	10.96	D09S24A.GX00
15	39.14	33.32	25.18	24.54	19.18	D15S24A.GX00
25	53.03	47.04	39.12	38.25	33.12	D25S24A.GX00
37	69.32	63.50	55.68	54.71	49.68	D37S24A.GX00

Plating: 4 --> flash AU
Plating: 6 --> 0.76µ AU

LEAD FREE PART NUMBER

SHELL	A±0.38	B±0.12	C±0.10	D±0.25	E±0.07	PART NUMBER
09	30.81	24.99	16.96	16.21	10.96	D09S24A.GX00LF
15	39.14	33.32	25.18	24.54	19.18	D15S24A.GX00LF
25	53.03	47.04	39.12	38.25	33.12	D25S24A.GX00LF
37	69.32	63.50	55.68	54.71	49.68	D37S24A.GX00LF

Plating: 4 --> flash AU
Plating: 6 --> 0.76µ AU

rev	ecn no	dr	date
B	-	JAR	1999/10/18
D	LS05-001	MPE	2005/03/14
E	LS05-0056	MPE	2005/06/28
F	LS06-0019	LGO	2006/02/07
G	LS06-0097	LGO	2006/07/28
-	-	-	-
-	-	-	-

GENERAL CHARACTERISTICS AND ROHS INFORMATIONS:
SEE DRAWING C01-8646-0000

www.fciconnect.com		surface	tolerance std	projection	mm	
		ISO 1302	ISO 406 ISO 1101			
TOLERANCES UNLESS OTHERWISE SPECIFIED						
Dr	JOUBERT	1996/09/10	0.X	±0.1	size	Scale
Eng	PESSON	1996/09/10	0.XX	±0.1	A3	2
Chr	LEGARE	1996/09/10	0.XX' ±2'	0.XXX	±0.1	ECN LS06-0097
Appr	LEGARE	1996/09/10	Product family		D-SUB	Spec ref -
FCI		FEMALE CONNECTOR STD EURO			Title	
		straight solder type for			C01-8646-0495	
catalog no					Rev. G	
		CUSTOMER			sheet 1 of 1	

European Views



Copyright FCI.

D