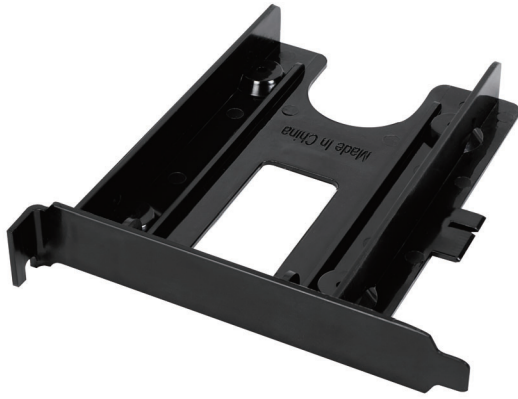


# LogiLink®

## Mounting Bracket

1 Bay 2.5" (6.35cm) HDD/SSD

Art. No.: AD0014



Easy mounting of your IDE/SATA HDD/SSD with your PC: Just slide the HDD into LogiLink's Bracket for 1-Bay 2.5" (6.35cm) HDD/SSD, screw it together and secure it with another screw to the PC. After installing the the hardware, connect your SATA and power cable to the HDD and power supply. Then you can start using it.

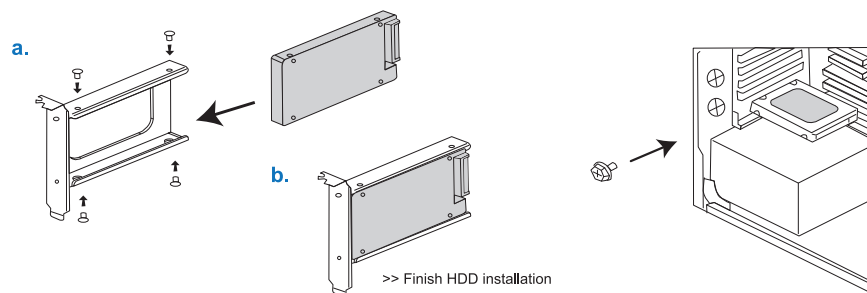
### Features:

- » Fit to the standard bracket on the computer case
- » Bracket for 1-Bay 2.5" (6.35cm) HDD/SSD
- » Supports up to a 15mm HDD
- » Material: Plastic
- » Dimension: 130(L) x 120(W) x 21(H) mm
- » Included: 5 screws



### Installation:

1. Slide the HDD into the bracket and secure the HDD with 2 screws on each side.
2. Mount the bracket to the computer case and secure it with the screw from the PC.
3. After the hardware install, connect your SATA and Power cable (not included) to the HDD and power supply. Then you can start using it.



### Package Contents:

- » 1 x Bracket for 1-Bay 2.5" HDD/SSD
- » 5 x Screws
- » 1 x User Manual

### Package Information:

- » Packing Dimension: mm
- » Packing Weight: kg
- » Carton Dimension: mm
- » Carton Q'ty: pcs
- » Carton Weight: kg



\* The specifications and pictures are subject to change without notice.  
\*All trade names referenced are the registered namework of their respective owners.



Made in China