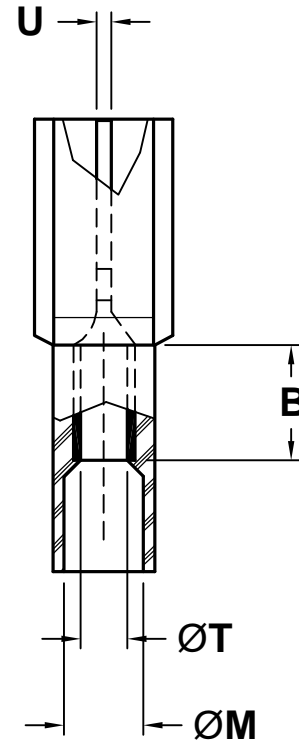
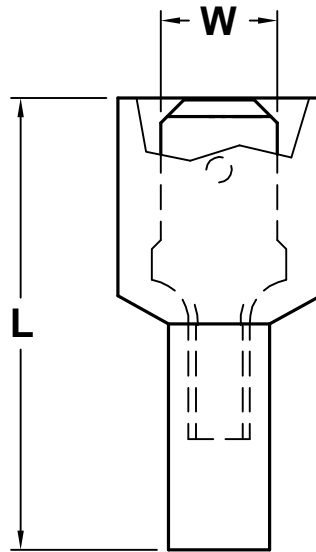
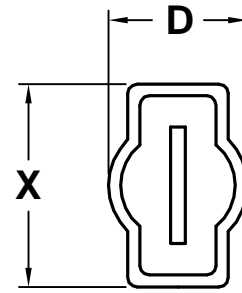


ALL RIGHTS RESERVED. NO PORTION OF THIS PUBLICATION, WHETHER IN WHOLE OR IN PART CAN BE REPRODUCED WITHOUT THE EXPRESS WRITTEN CONSENT OF SPC TECHNOLOGY.

REVISIONS			DOC. NO. SPC-F004 * Effective: 12/21/98 * DCP No: 680					
DCP #	REV	DESCRIPTION	DRAWN	DATE	CHECKD	DATE	APPRVD	DATE
	A	Redrawn in Autocad	JAP	12/11/91				
1199	B	Redrawn & Renamed..was CMS-TF-****	JWM	11/14/01	JC	11/26/01	JC	11/26/01

**NOTES:**

1. Material: Electro-tin plated Copper  
Nylon 6/6 sleeve
2. Operating Temp: -40°F to 221°F (-40°C ~ 105°C)
3. Voltage Rating: 600 V
4. Flammability: UL94V-2



LISTED



LR22190M6

OSHA  
Acceptable

PART NUMBER	WIRE RANGE (AWG)	MALE TAB WIDTH (W') X THICKNESS	L	X	D	B	T	M	U	COLOR
CMS-TF-1025	12 - 10	.250 x .032	1.05	.47	.39	.25	.150	.250	.020	YELLOW
CMS-TF-1418	16 - 14	.187 x .020	.87	.37	.30	.24	.080	.145	.020	BLUE
CMS-TF-1425	16 - 14	.250 x .032	.98	.44	.30	.25	.085	.170	.020	BLUE
CMS-TF-1818	22 - 18	.187 x .020	.87	.37	.30	.24	.080	.145	.020	RED
CMS-TF-1825	22 - 18	.250 x .032	.98	.44	.30	.25	.065	.145	.020	RED

SPC-F004.DWG

**DISCLAIMER:**  
ALL STATEMENTS AND TECHNICAL INFORMATION CONTAINED HEREIN ARE BASED UPON INFORMATION AND/OR TESTS WE BELIEVE TO BE ACCURATE AND RELIABLE. SINCE CONDITIONS OF USE ARE BEYOND OUR CONTROL, THE USER SHALL DETERMINE THE SUITABILITY OF THE PRODUCT FOR THE INTENDED USE AND ASSUME ALL RISK AND LIABILITY WHATSOEVER IN CONNECTION THEREWITH.



**SPC TECHNOLOGY**

Tolerances: Unless Otherwise Specified: .X = ±.015 .XX = ±.010 .XXX = ±.005	DRAWN BY:	DATE:	DRAWING TITLE:				ELECTRONIC FILE		REV
	JC	3/11/91	Fully Nylon Insulated Butted Seam Male Disconnects				TA-451.dwg		B
	CHECKED BY:	DATE:	SIZE	DWG. NO.					
	JOHN COLE	12/12/91	A	TA-451					
	APPROVED BY:	DATE:	SCALE:		U.O.M.: INCHES [mm]		SHEET:		
JL	12/12/91	NTS		1 OF 1					