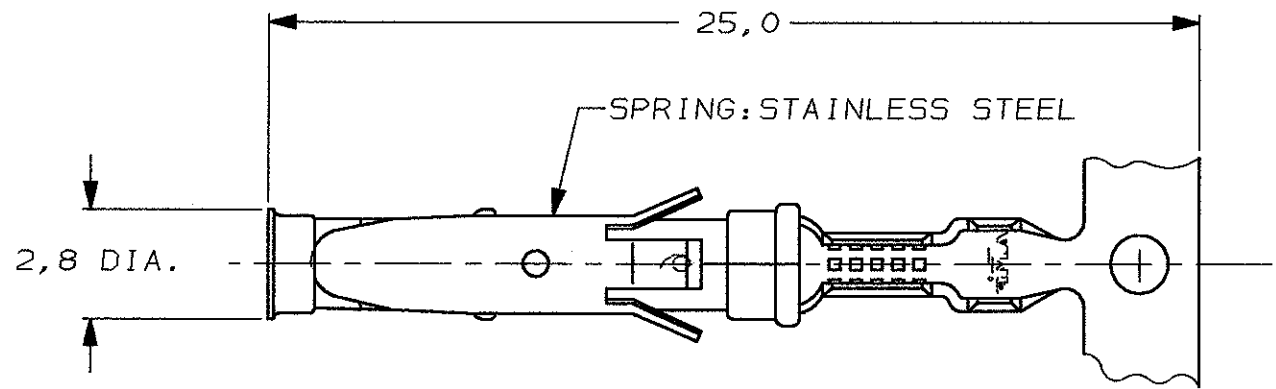
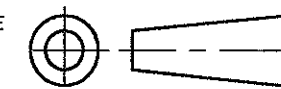


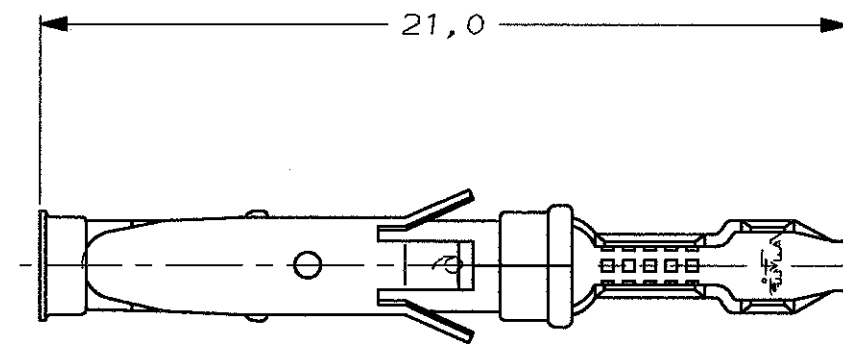
DO NOT SCALE  
DIMENSIONS IN mm

METRIC

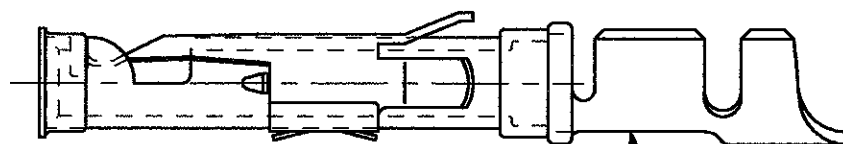
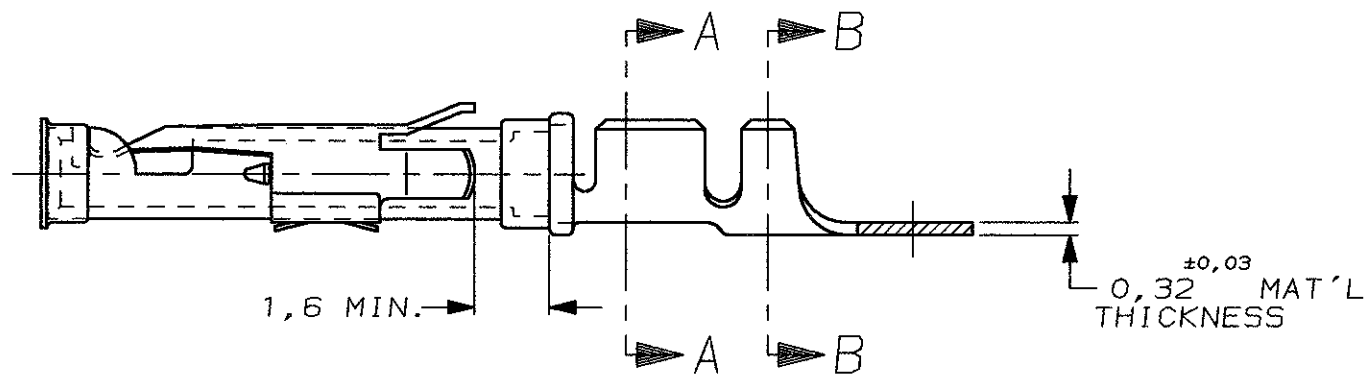
THIRD ANGLE  
PROJECTION



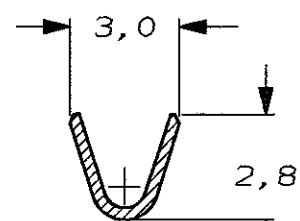
STRIP



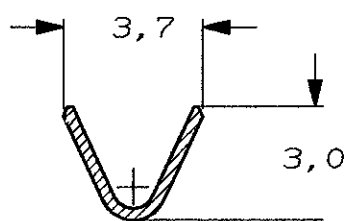
LOOSE-PIECE



COLOR CODE: BLUE



SECTION A-A



SECTION B-B

WIRE RANGE : 0,75-1,50 mm<sup>2</sup> (18-16 AWG)  
INSUL. RANGE : 2,0 -2,5 mm (.080-.100)

5	OBSOLETE	5-163083-3	4	C		BRASS	ECON. GOLD	21
		5-163083-2	1	4	C	BRASS	SEL. GOLD	22
		5-163083-1	1	4	C	BRASS	EL. TIN	20
		1-163083-4		A	1-163084-4	BRASS	EL. TIN	31 20
	5	OBSOLETE	7	163083-3	A	1-163084-3	BRASS	BR. TIN/LEAD 30
		1-163083-2		A		BRASS	SILVER	28
		1-163083-1		A		BRASS	ECON. GOLD	21
		1-163083-0		B	1-163084-0	BRASS	ECON. GOLD	21
		163083-9		B		BRASS	SILVER	28
		163083-8		A		BRASS	EL. TIN	20
		163083-7		A		BRASS	SEL. GOLD	22
		163083-2	1	B	163084-2	BRASS	SEL. GOLD	22
		163083-1	1	B	163084-1	BRASS	EL. TIN	20
		PARTNUMBER	DIRECTION OF REEL	LOOSE-PIECE	MATERIAL	PLATING		

DIRECTION OFF TOP OF REEL	
AMPOMATOR + MINI-APPL. 107-3-F16.1	A
107-3-F16.2	B
107-3-F16.4	C

NOTES	MATERIAL	THICKNESS	AREA
20	TIN	2,0 μm	ALL OVER
21	NICKEL GOLD TIN/LEAD	0,8 μm	ALL OVER CONTACT AREA BARREL
22	NICKEL GOLD GOLD	0,8 μm	ALL OVER CONTACT AREA ALL OVER
23	NICKEL GOLD GOLD	1,2 μm	ALL OVER CONTACT AREA ALL OVER
24	NICKEL SILVER TIN/LEAD	2,5 μm	ALL OVER CONTACT AREA BARREL
25	SILVER NICKEL	1,5-2,5 μm 0,76 μm	ALL OVER ALL OVER
26	SILVER	2,5 μm	ALL OVER
27	NICKEL TIN/LEAD	1,27 μm 1,27 μm	ALL OVER ALL OVER
31	LUBRICATED		

DR.	CHK.	APP.	DATE
-	-	-	-
-	-	-	-

REV.	DATE	BY	CHK.	DATE
1	19JAN10	KK	HMR	
2	05/01/05	AM	FWK	
3	02/08/04	JMS	FWK	
4	08 JUL 98	D.K.	R.V.	
5	21-11-96	JvL	RV	
6	03-05-94	JvL	MVD	
7	18-05-92	JvdH	RD	

**CUSTOMER DRAWING** FOR REFERENCE ONLY  
WILL NOT BE UPDATED

© COPYRIGHT 19- BY AMP HOLLAND B.V.  
ALL INTERNATIONAL RIGHTS RESERVED. AMP PRODUCTS MAY BE  
COVERED BY U.S. AND FOREIGN AND/OR PATENTS PENDING.  
THIS DRAWING IS UNPUBLISHED  
RELEASED FOR PUBLICATION 19

**AMP** AMP HOLLAND B.V.  
's-Hertogenbosch,  
The Netherlands.

NAME

**SOCKET TYPE III CONTACT  
SIZE 16**

DWG. No. 163083

REV. LTR. SHEET  
AZ1 1 OF 1 A3

- NOTES :
- U.L. RECOGNIZED UNDER FILE E28476 VOL. VI SEC. I.
  - FOR CRIMP DETAILS SEE AMP-SPEC. 114-19.000.
  - MEETS PRODUCT SPECIFICATION 108-10042.
  - SPECIAL REEL WITH 200 PCS FOR REEL-FED HAND TOOL.
  - OBSOLETE PARTS: OBSOLETE CIS STREAMLINING PER D.RENAUD/D.SINISI