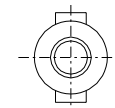
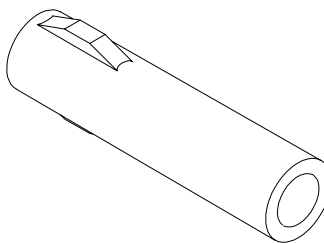
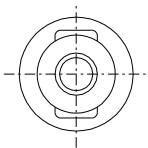
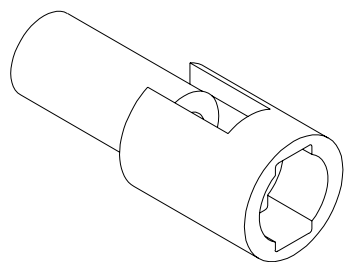
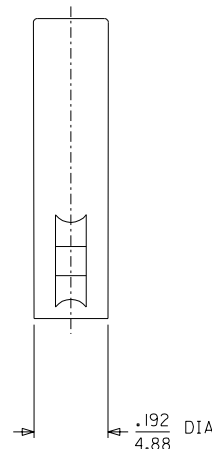
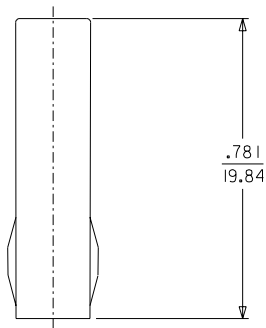
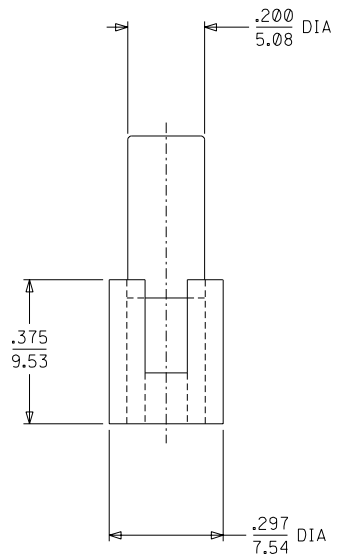
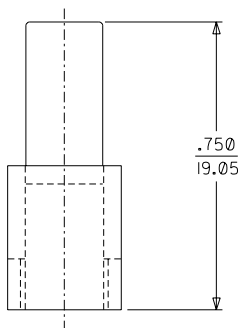
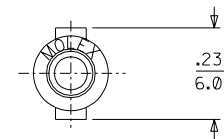
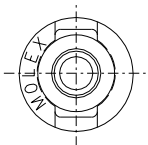


PLUG

RECEPTACLE



PLUG HOUSING

RECEPTACLE HOUSING

REDRAWN ON CAD
EC NO. LUCP2003-2578
DRWN: BSYNNOTT 6/10/03
CHK: BWIRKLUS 6/13/03
APPR: BWIRKLUS 6/16/03
REV H

DESCRIPTION
MAJOR
CRITICAL

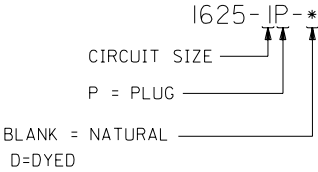
GENERAL TOLERANCES: (UNLESS SPECIFIED)
4 PLACES ±0.--- ±.
3 PLACES ±0. ±.010
2 PLACES ±0.25 ±.014
1 PLACE ±0.35 ±.
ANGULAR: ± 1°
DRAFT WHERE APPLICABLE MUST REMAIN WITHIN DIMENSIONS

SCALE 4 : 1
DESIGN UNITS <input type="checkbox"/> mm <input checked="" type="checkbox"/> INCH
DRAWN BY & DATE JBS 6/10/03
CHECKED BY & DATE BW 6/13/03
APPROVED BY & DATE BW 6/16/03
CAD FILENAME SD1625IX1.DGN

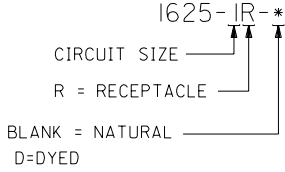
DIMENSIONS: <input type="checkbox"/> mm <input checked="" type="checkbox"/> INCH <input type="checkbox"/> mm ONLY	
THIRD ANGLE PROJECTION	REVISE ON CAD ONLY
TITLE: PLUG & RECEPTACLE HOUSINGS I CIRCUIT, .062/(1.57) DIA. SERIES	
MOLEX INCORPORATED	
MATERIAL NO. SEE CHART	DRAWING NO. SD-1625-1*-*
SHEET NO. 1 OF 2	SIZE C

13	12	11	10	9	8	7	6	1625	4	3	2	1
PLUG		RECEPTACLE										
PART NO.	ENG. NO.	PART NO.	ENG. NO.									
03-06-2011	1625-IP	03-06-1011	1625-IR									
03-06-7011	1625-IP-D	03-06-6011	1625-IR-D									

PLUG LEGEND:



RECEPTACLE LEGEND:



NOTES:

1. MATERIAL: NYLON, PA66, U.L. 94V-2.
2. FINISH: NONE.
3. PRODUCT SPECIFICATION: PS-02-06.
4. PACKAGING SPECIFICATION: NONE.
5. FOR USE WITH .062 SERIES TERMINALS.

DIMENSIONS SHOWN (METRIC) INCH			▽ = 0	▼ = 0	REVISE ONLY ON CAD SYSTEM												
UNLESS OTHERWISE SPECIFIED TOLERANCES: ANGULAR \pm .05			TITLE														
<table border="1"> <tr> <th></th> <th>INCH</th> <th>METRIC</th> </tr> <tr> <td>3 PLACE</td> <td>\pm .010</td> <td>---</td> </tr> <tr> <td>2 PLACE</td> <td>\pm .014</td> <td>\pm 0.25</td> </tr> <tr> <td>1 PLACE</td> <td>---</td> <td>\pm 0.35</td> </tr> </table>				INCH	METRIC	3 PLACE	\pm .010	---	2 PLACE	\pm .014	\pm 0.25	1 PLACE	---	\pm 0.35	PLUG & RECEPTACLE HOUSINGS		
	INCH	METRIC															
3 PLACE	\pm .010	---															
2 PLACE	\pm .014	\pm 0.25															
1 PLACE	---	\pm 0.35															
DRAFT WHERE APPLICABLE MUST REMAIN WITHIN DIMENSIONS			1 CIRCUIT														
			.062/(1.57) DIA. SERIES														
			FROM: MOLEX INCORPORATED U.S.A.		SHEET NO. DATE												
			L15LE.I.L.L. 60532		2 6/10/03												
			PART NO. DRWG. NO.														
			SEE CHART SD-1625-1-*														
DRWG. BY: JBS			CHK'D. BY: BW														
APP'D. BY: BW			SCALE: :														
LTR.	REVISIONS	LTR.	REVISIONS														

DWG. NO. SD-1625-IP

E

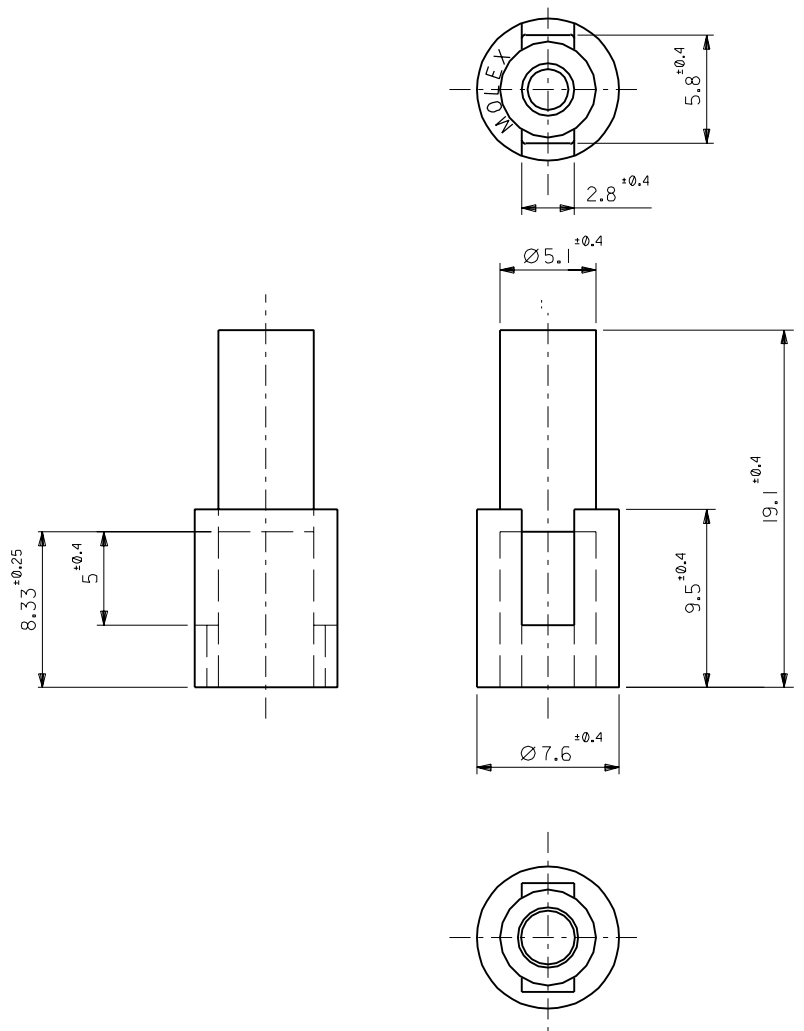
D

C

B

A

ALL DIMENSIONS IN METRIC DO NOT SCALE DRAWING



注記
NOTE

材質:ナイロン66, 94V-2
MATERIAL:NYLON66,94V-2

03-06-2011	1625-IP
PART NO.	ENG.NO.

材料 MATERIAL		図中参照 REFER TO DRAWING		moLEX MOLEX-JAPAN CO.,LTD. 日本モレックス株式会社	
仕上げ FINISH		—		REVISE ONLY ON CAD SYSTEM	
適用電線範囲 WIRE RANGE		—		TITLE 名称	
被覆外径 INS. RANGE		—		.062 DIA. 1 CIRCUIT PLUG HOUSING	
DRAWN BY '96/07/08 H.IIJIMA		CHK'D BY '96/07/08 M.FUKUSHIMA		DWG. NO.	
APP'D BY '96/07/08 M.ENOMOTO		尺 寸 SCALE 4 : 1		REV B	
記号 LTR		変更内容 REVISION RECORD		DR. 日付 CHR. DATE	
角度 ANGLE		34°		一般公差 GENERAL TOLERANCES	
30°以上 OVER		+0.3			
10°以上 OVER		+0.25			
10°未満 UNDER		+0.2			

THIS DRAWING CONTAINS INFORMATION THAT IS PROPRIETARY TO MOLEX(JAPAN) AND SHOULD NOT BE USED WITHOUT WRITTEN PERMISSION
本図面は日本モレックス(株)の所有する情報を含むもので 当社の許可なく複製を禁止する。
EN-01C(032)MXJ-32

F

E

D

C

B

A

1625-551

8

7

6

5

4

3

2

1