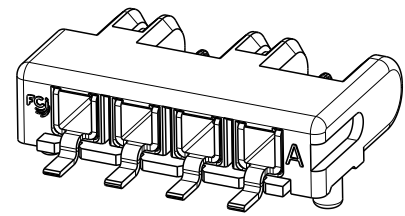
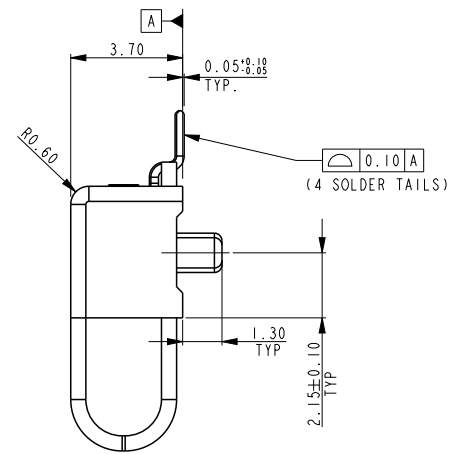
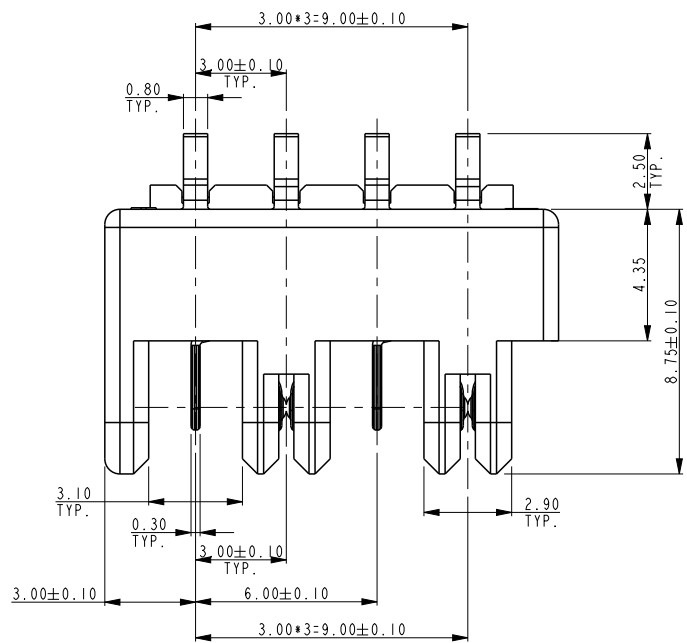
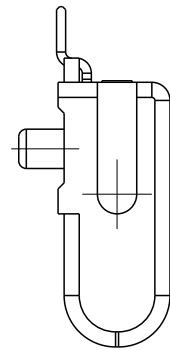
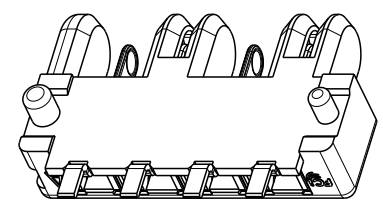


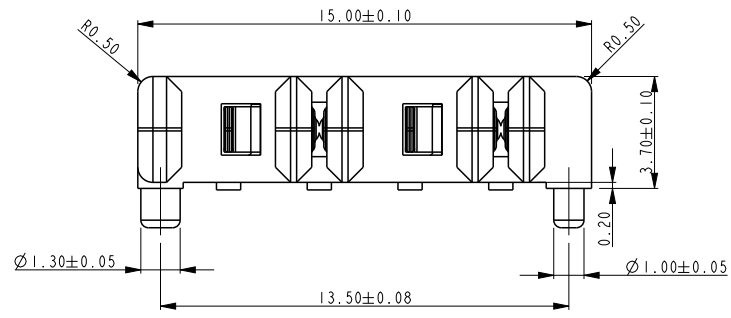
PART NUMBER
10120045-401LF



SCALE 3.000



SCALE 3.000



SCALE 4.000

NOTES:
 1. MATERIAL
 HOUSING: HIGH TEMPERATURE THERMOPLASTIC POLYESTER
 UL 94 V-0, NATURAL
 CONTACTS: COPPER ALLOY;
 PLATING SPEC AS BELOW:
 FOR CONTACT AREA:
 *GXT OVER NICKEL
 FOR SOLDER AREA:
 TIN (MATTE) OVER NICKEL
 2. PRODUCT SPEC. GS-12-1079
 3. LEAD FREE NOTES:
 3a. THE HOUSING WILL WITHSTAND EXPOSURE TO 260° C PEAK
 TEMPERATURE FOR 10 SECONDS IN A COVECTION, INFRA-RED
 OR VAPOR PHASE REFLOW OVEN.
 3b. THIS PRODUCT MEETS EUROPEAN UNION DIRECTIVES AND
 OTHER COUNTRY REGULATIONS AS DESCRIBED IN GS-22-008.
 *GXT™ is an FCI Electronics patented process of palladium-nickel alloy plated with a gold flash.

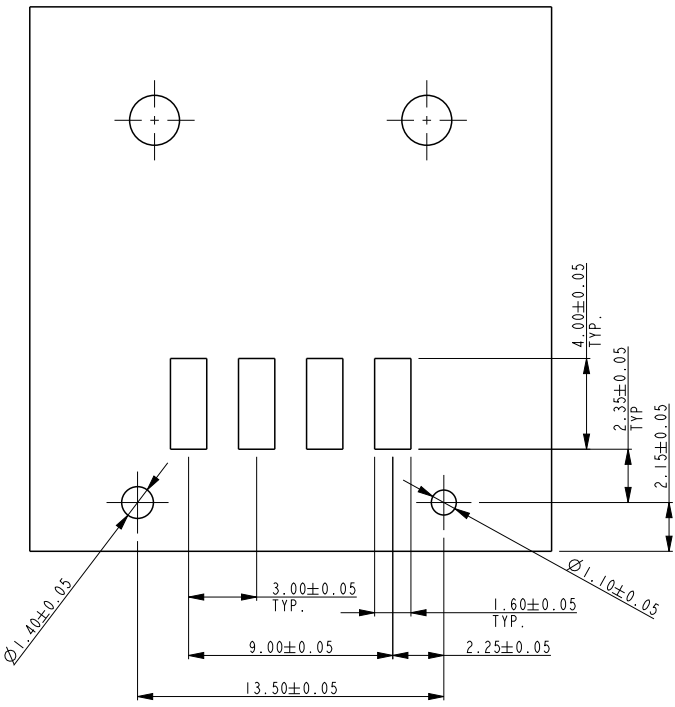


Copyright FCI.

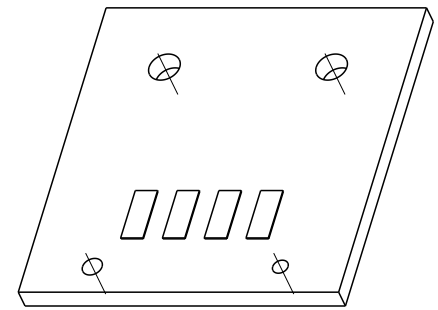
www.fciconnect.com			surface ISO 1302	tolerance std ISO 406 ISO 1101	projection TOLERANCES UNLESS OTHERWISE SPECIFIED	MM
Dr	M JACOB	2014-05-12	ANGULAR	0.x ±x	size A4	Scale 4.000
Eng	M JACOB	2014-05-12	LINEAR	0.xx ±0.2	ECN ELX-1-22313	
Chr	M JACOB	2014-05-12	0° ±2°	0.xxx ±x	Spec ref	
Appr	BIJU K PAUL	2014-05-12	Product family - RoTaConnect			
FCI			title	ASSEMBLY, 4 POS HOR TYPE WITH PEG ROTATABLE BOARD TO BOARD CONNECTOR	dwg no	10120045-401C
			catalog no	10120045-401LF	CUSTOMER DRAWING	sheet 1 of 2

rev	ecn no	dr	date
A	-	MJA	2014-05-12
B	ELX-1-22313	MJA	2015-10-27
-	-	-	-
-	-	-	-
-	-	-	-
-	-	-	-

PART NUMBER
10120045-401LF



SCALE 3.000



SCALE 2.000



Copyright FCI.

www.fciconnect.com			surface ISO 1302	<input checked="" type="checkbox"/>	tolerance std ISO 406 ISO 1101	projection ISO 1101	MM
			TOLERANCES UNLESS OTHERWISE SPECIFIED				
Dr	M JACOB	2014-05-12	ANGULAR	LINEAR	0.x	±x	size A4
Eng	M JACOB	2014-05-12			0.xx	±0.2	Scale 1.000
Chr	M JACOB	2014-05-12	0°	±2°	0.xxx	±x	ECN ELX-1-22313
Appr	BIJU K PAUL	2014-05-12	Product family - RotaConnect			Spec ref -	
			title ASSEMBLY, 4 POS HOR TYPE WITH PEG ROTATABLE BOARD TO BOARD CONNECTOR		dwg no 10120045-401C		Rev. B
			catalog no 10120045-401LF		CUSTOMER DRAWING sheet 2 of 2		

rev	ecn no	dr	date
B	-	-	-
-	-	-	-
-	-	-	-
-	-	-	-
-	-	-	-
-	-	-	-

1

2

PART NUMBER
10120045-401LF

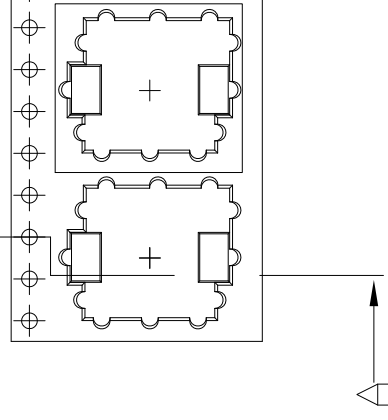
$\varnothing 1.50 \pm 0.10 / -0$

T 0.4 ± 0.05

A



A



5.75 REF

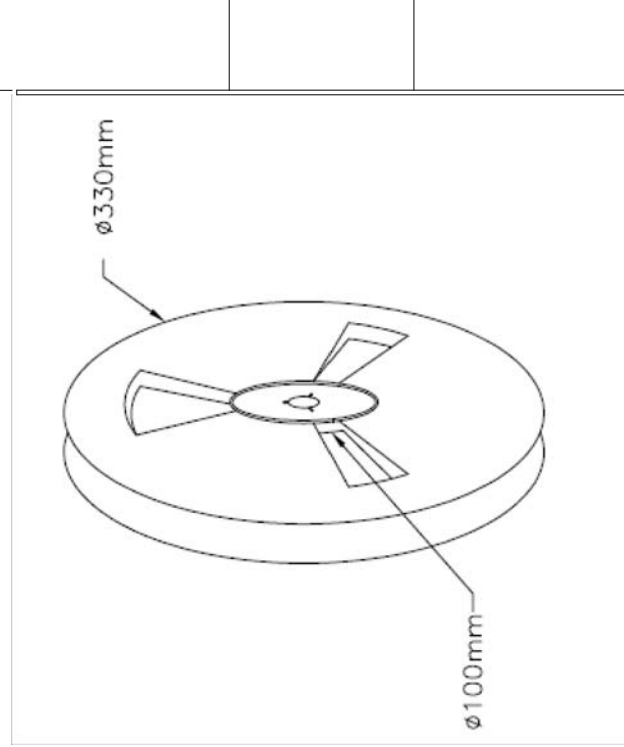
A



SECTION A-A

B

24 (REEL WIDTH)



C

Copyright FCI

NOTES :

1. MATERIAL : ANTI-STATIC POLYSTYRENE
2. PACKAGING AS PER EIA-481 STD.
3. QTY PER REEL : 710 NDS

D

rev	ecn no
B	-
-	-
-	-
-	-
-	-
-	-

1

2