

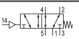
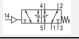
5/2-directional valve, Series 581, size 1

- Single air pilot
- $Q_n = 1400$ l/min
- Plate connection
- Compressed air connection output Base plate ISO 5599-1
- Can be assembled into blocks



| | |
|----------------------------------|-----------------------------|
| Type | Spool valve |
| Blocking principle | Single base plate principle |
| Sealing principle | Soft sealing |
| Connection type | Plate connection |
| Standards | ISO 5599-1, ISO 1 |
| Nominal flow Q_n | 1400 l/min |
| Compressed air connection | Base plate ISO 5599-1 |
| Working pressure min./max. | -0,95 ... 16 bar |
| Control pressure min./max. | 3 ... 16 bar |
| Ambient temperature min./max. | -20 ... 70 °C |
| Medium temperature min./max. | -20 ... 70 °C |
| Medium | Compressed air class 6-4-3 |
| Max. particle size | 50 μ m |
| Oil content of compressed air | 0 ... 5 mg/m ³ |
| Mounting screw | with hexagon socket |
| Mounting screw tightening torque | 2 Nm |
| Weight | 0,21 kg |

Technical data

| Part No. | | Flow conductance | Throttle | | |
|------------|---|------------------|---------------|----|--|
| | | C-value | | | |
| 5811130000 |  | 5,2 l/(s*bar) | - | - | |
| 5811131000 |  | 5,2 l/(s*bar) | with throttle | 1) | |

Connection 12 must be connected with atmospheres, Nominal flow Q_n at 6 bar and $\Delta p = 1$ bar

1) with throttle

Technical information

The min. control pressure must be adhered to, since otherwise faulty switching and valve failure may result!

The pressure dew point must be at least 15 °C under ambient and medium temperature and may not exceed 3 °C .

The oil content of compressed air must remain constant during the life cycle.

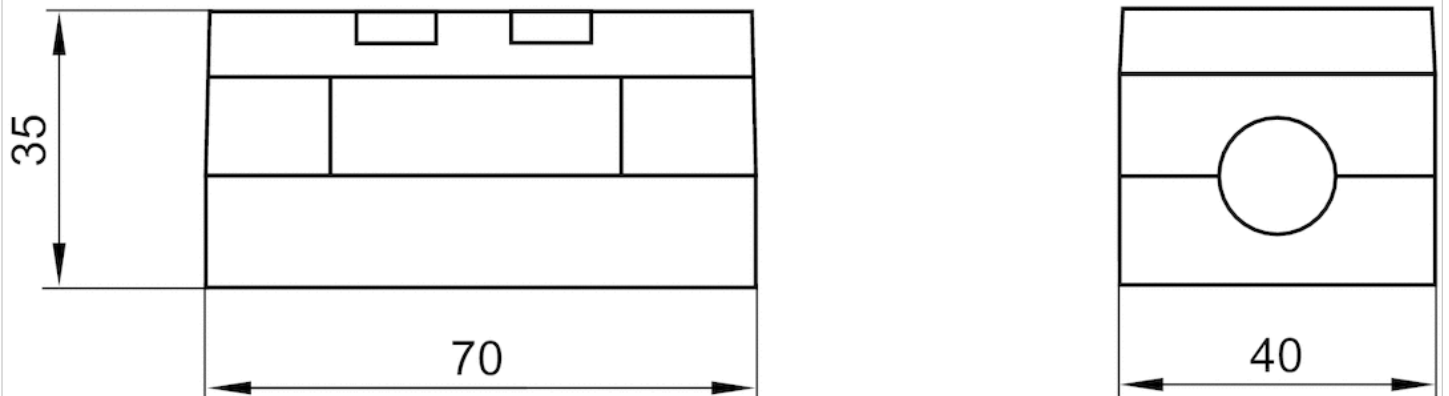
Use only the approved oils from AVENTICS. Further information can be found in the "Technical information" document (available in the MediaCentre).

Technical information

| | |
|---------|--------------------------------|
| Housing | Aluminum |
| Seals | Acrylonitrile butadiene rubber |

Dimensions

Dimensions



Efficient pneumatic solutions, our program: cylinders and drives, valves and valve systems, air supply management



Visit us: [Emerson.com/Aventics](https://www.emerson.com/Aventics)

Your local contact: [Emerson.com/contactus](https://www.emerson.com/contactus)



Emerson.com



[Facebook.com/EmersonAutomationSolutions](https://www.facebook.com/EmersonAutomationSolutions)



[LinkedIn.com/company/Emerson-Automation-Solutions](https://www.linkedin.com/company/Emerson-Automation-Solutions)



[Twitter.com/EMR_Automation](https://twitter.com/EMR_Automation)

An example configuration is depicted on the title page. The delivered product may thus vary from that in the illustration. Subject to change. This Document, as well as the data, specifications and other information set forth in it, are the exclusive property of AVENTICS GmbH. It may not be reproduced or given to third parties without its consent. Only use the AVENTICS products shown in industrial applications. Read the product documentation completely and carefully before using the product. Observe the applicable regulations and laws of the respective country. When integrating the product into applications, note the system manufacturer's specifications for safe use of the product. The data specified only serve to describe the product. No statements concerning a certain condition or suitability for a certain application can be derived from our information. The information given does not release the user from the obligation of own judgement and verification. It must be remembered that the products are subject to a natural process of wear and aging.

The Emerson logo is a trademark and service mark of Emerson Electric Co. Brand logotype are registered trademarks of one of the Emerson family of companies. All other marks are the property of their respective owners. © 2021 Emerson Electric Co. All rights reserved.
2021-07



CONSIDER IT SOLVED™