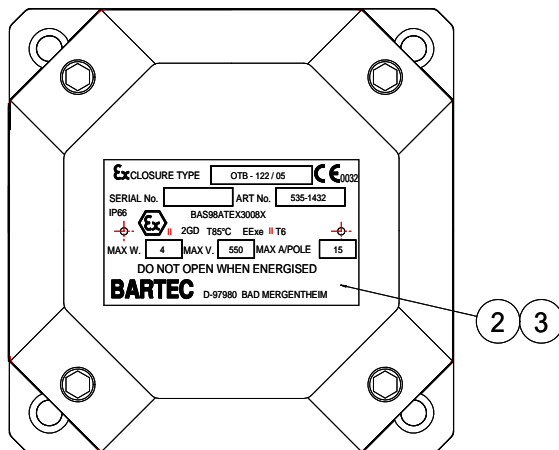


IF IN DOUBT ASK!

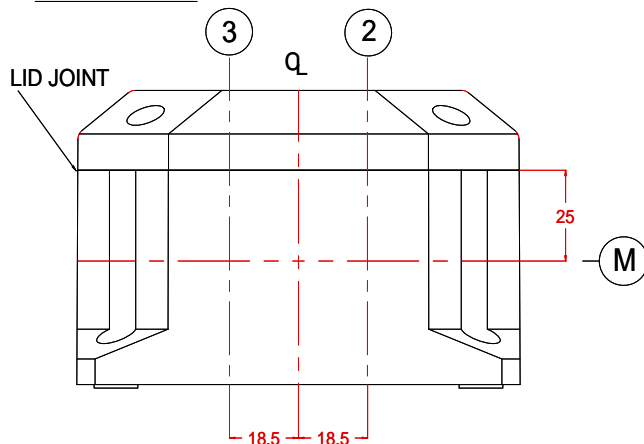


ITEM	QTY	DESCRIPTION
1	1	BLACK POLYESTER ENCLOSURE TYPE OEB-122
2	1	BASEEFA ATEX APPROVAL LABEL DRG No 1750/A4
3	2	SS HAMMERDRIVE RIVET TYPE U No.0x1/8"
4	2	M6 x 10 mm ZINC PLATED/PASSIVATED SLOTTED CHEESEHEAD SCREW
5	2	M6 ZINC PLATED/PASSIVATED SPRING WASHER
6	2	WEIDMULLER EWK1 END BRACKET CAT No 0206160000
7	1	WEIDMULLER AP2.5 END PLATE CAT No 0279520000
8	12	WEIDMULLER SAK2.5 TERMINALS CAT No 0279620000
9	1	STEEL EARTH CONTINUITY PLATE DRG No 1970/A4 (WITH TERMINAL RAIL FITTED) SAP No 241709
10	1	WAGO DFG/1 EARTH TERMINAL + M4 HANK BUSH
11	1	INSTALLATION INSTRUCTIONS (PRINTED ON YELLOW PAPER)
12	1	RS OUTER PACKAGING LABEL

NOTES

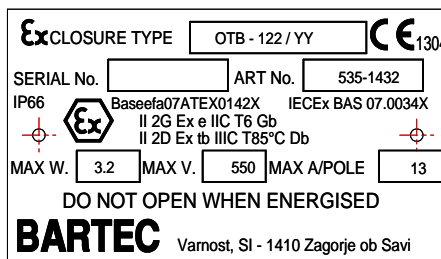
- SUPPLIED IN CARDBOARD BOX, WITH RS STOCK NUMBER LABEL FITTED CENTRALLY ON THE LARGEST SIDE.
- CLEAR OR BROWN VINYL TAPE MUST BE USED TO SEAL THE CARDBOARD BOX.
- ALL UNPLUGGED ENTRIES TO BE BLANKED OFF WITH LABEL TYPE 1108/010.

VIEW ON FACE A&B AND FACE C&D



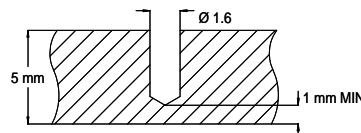
LABEL DETAILS

SERIAL LABEL NOTES  
 1, YY DENOTES YEAR OF MANUFACTURE  
 2, SERIAL NUMBER IS TO BE TAKEN FROM LOG



THREAD SIZE	FACE REF.	TAPPINGS PER FACE	TAPPING POSITION REFERENCE
M20 x 1.5	A,B,C + D	2	2M, 3M

LABEL DRILLING DEPTH



BASEEFA (2001) Ltd  
 Certified Product

No modifications permitted without approval of BARTEC authorised person

REV				DATE	DESCRIPTION	APP	MATERIAL:	TOLERANCES	AS INDICATED ON DRAWING	TITLE:	OTB-122 C/W 12 SAK2.5 TERMINALS, 1 DFG/1 EARTH, SECP. RS STOCK No. 5351432						
B	26/09/13	DC 755			HG		COPYRIGHT: This Drawing Must Not Be Copied In Any Way Without Written Permission			THIRD ANGLE PROJECTION			SCALE				
A	18/11/05	FIRST ISSUE			A.S						DRAWN	I.F	DATE	18/11/05	CHKD	A.S	APP
										DRG No	OE1214					SHT No	

BARTEC (UK) LTD  
 Station Rd, Facit, Whitworth, Nr Rochdale.