

TGS 832 - for the detection of Chlorofluorocarbons (CFC's)

Features:

- * High sensitivity to R-134a
- * Quick response to R-134a
- * Improved selectivity
- * Long term stability
- * Uses simple electrical circuit
- * Ceramic base resistant to severe environment

The sensing element of Figaro gas sensors is a tin dioxide (SnO_2) semiconductor which has low conductivity in clean air. In the presence of a detectable gas, the sensor's conductivity increases depending on the gas concentration in the air. A simple electrical circuit can convert the change in conductivity to an output signal which corresponds to the gas concentration.

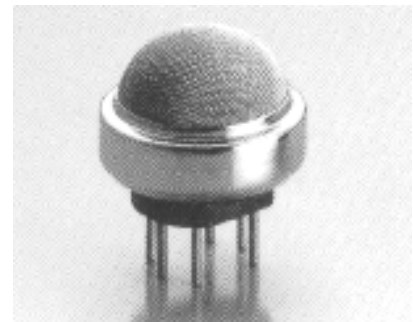
The **TGS 832** has high sensitivity to R-134a, the most promising alternative to R-12, commonly used in air conditioning systems and refrigerators. R-12 and R-22 are also detectable by TGS 832. With its good long term stability, TGS 832 is an excellent, low-cost sensor for CFC detection.

The figure below represents typical sensitivity characteristics, all data having been gathered at standard test conditions (see reverse side of this sheet). The Y-axis is indicated as *sensor resistance ratio* (R_s/R_o) which is defined as follows:

- R_s = Sensor resistance of displayed gases at various concentrations
- R_o = Sensor resistance at 100ppm of R-134a

Applications:

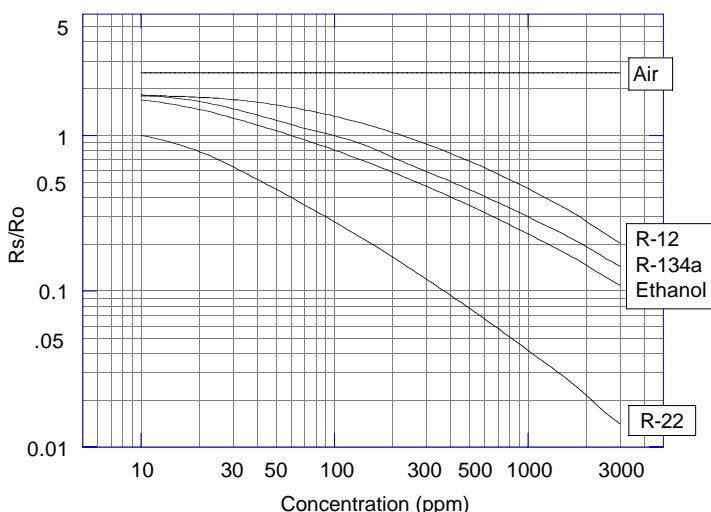
- * Refrigerant leak detector



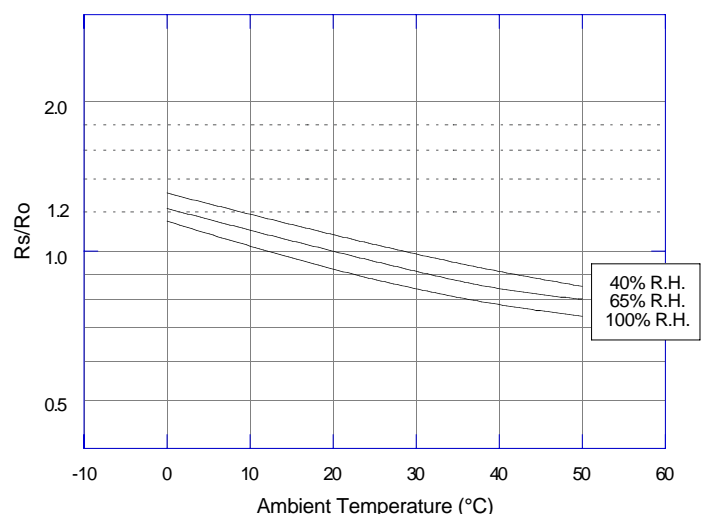
The figure below represents typical temperature and humidity dependency characteristics. Again, the Y-axis is indicated as *sensor resistance ratio* (R_s/R_o), defined as follows:

- R_s = Sensor resistance at 100ppm of R-134a at various temperatures/humidities
- R_o = Sensor resistance at 100ppm of R-134a at 20°C and 65% R.H.

Sensitivity Characteristics:

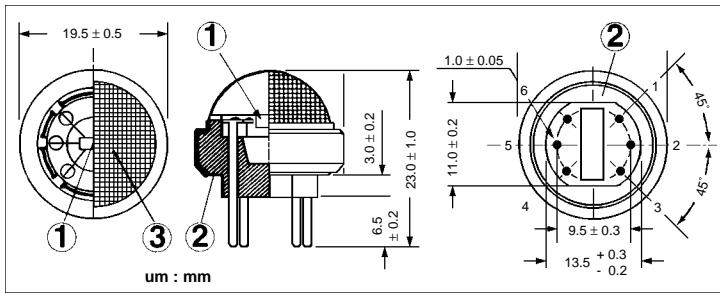


Temperature/Humidity Dependency:



IMPORTANT NOTE: OPERATING CONDITIONS IN WHICH FIGARO SENSORS ARE USED WILL VARY WITH EACH CUSTOMER'S SPECIFIC APPLICATIONS. FIGARO STRONGLY RECOMMENDS CONSULTING OUR TECHNICAL STAFF BEFORE DEPLOYING FIGARO SENSORS IN YOUR APPLICATION AND, IN PARTICULAR, WHEN CUSTOMER'S TARGET GASES ARE NOT LISTED HEREIN. FIGARO CANNOT ASSUME ANY RESPONSIBILITY FOR ANY USE OF ITS SENSORS IN A PRODUCT OR APPLICATION FOR WHICH SENSOR HAS NOT BEEN SPECIFICALLY TESTED BY FIGARO.

Structure and Dimensions:

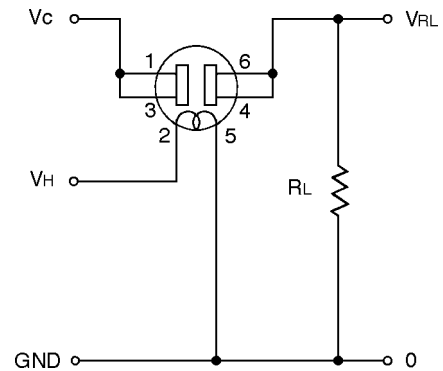


- ① Sensing Element:
SnO₂ is sintered to form a thick film on the surface of an alumina ceramic tube which contains an internal heater.
- ② Sensor Base:
Alumina ceramic
- ③ Flame Arrestor:
100 mesh SUS316 double gauze

Pin Connection and Basic Measuring Circuit:

The numbers shown around the sensor symbol in the circuit diagram at the right correspond with the pin numbers shown in the sensor's structure drawing (*above*). When the sensor is connected as shown in the basic circuit, output across the Load Resistor (V_{RL}) increases as the sensor's resistance (R_s) decreases, depending on gas concentration.

Basic Measuring Circuit:



Standard Circuit Conditions:

Item	Symbol	Rated Values	Remarks
Heater Voltage	V_H	$5.0 \pm 0.2V$	AC or DC
Circuit Voltage	V_C	Max. 24V	DC only $P_s \leq 15mW$
Load Resistance	R_L	Variable	$0.45k\Omega$ min.

Electrical Characteristics:

Item	Symbol	Condition	Specification
Sensor Resistance	R_s	R-134a at 100ppm/air	$4k\Omega \sim 40k\Omega$
Change Ratio of Sensor Resistance	R_s/R_o	$\frac{R_s(R-134a \text{ at } 300ppm/air)}{R_s(R-134a \text{ at } 100ppm/air)}$	0.50 ± 0.65
Heater Resistance	R_H	Room temperature	$30.0 \pm 3.0\Omega$
Heater Power Consumption	P_H	$V_H=5.0V$	835mW (typical)

Standard Test Conditions:

TGS 832 complies with the above electrical characteristics when the sensor is tested in standard conditions as specified below:

- Test Gas Conditions: $20 \pm 2^\circ C$, $65 \pm 5\% R.H.$
- Circuit Conditions: $V_C = 10.0 \pm 0.1V$ (AC or DC),
 $V_H = 5.0 \pm 0.05V$ (AC or DC),
 $R_L = 10.0k\Omega \pm 1\%$

Preheating period before testing: More than 7 days

Sensor Resistance (R_s) is calculated by the following formula:

$$R_s = \left(\frac{V_C}{V_{RL}} - 1 \right) \times R_L$$

Power dissipation across sensor electrodes (P_s) is calculated by the following formula:

$$P_s = \frac{V_C^2 \times R_s}{(R_s + R_L)^2}$$

FIGARO USA, INC.
3703 West Lake Ave. Suite 203
Glenview, Illinois 60025
Phone: (847)-832-1701
Fax: (847)-832-1705
email: figarousa@figarosensor.com

For information on warranty, please refer to Standard Terms and Conditions of Sale of Figaro USA Inc.