



7110DIN

WARNING: Read page 2 first.

ACHTUNG: Lesen Sie zuerst Seite 4!

RECOMMANDATION IMPORTANTE:

Reportez-vous tout d'abord à la page 6

ATENCIÓN: Primero lea la página 8

ATTENZIONE: Leggere per prima la pagina 10.



8 Digit Totalising Counter

Adaptors: Terminal Block and Isolated High Voltage Input

English
Page 2

8-Stelliger Summenzähler

*Schraubklemmenadapter 1:1 und Universal
Schraubklemmenadapter (Opto Koppler)*

Deutsch
Seite 4

Compteur Totalisateur à 8 chiffres

*Modules adaptateurs: bornier et optocoupleur pour entrée
tension*

Français
Page 6

Contador totalizador de 8 Dígitos

*Adaptadores: bloque de terminales y entrada de alta
tensión aislada*

Español
Página 8

Contatore Totalizzatore ad 8 cifre

*Adattatori: morsettiera e per ingressi ad alta tensione
isolate*

Italiano
Pagina 10

Dimensions, Abmessungen, Dimensiones, Dimensioni

Page 12
Seite 12
Pagina 12

Specification

Battery

Non-replaceable Lithium battery.

Expected life 10 year at 20°C

Display

8 digit black LCD, 7mm characters

Count Range

99999999 - rollover to 0

Operating temperature

-10°C to +60°C

Storage temperature

-20°C to +60°C

Altitude

Up to 2000m

Relative Humidity

80% max up to 31°C, decreasing to

50% max at 40°C

Sealing

Front panel sealed to IP65 when used

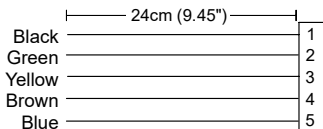
with clip mount and gasket provided.



WARNING

THIS UNIT CONTAINS A LITHIUM BATTERY AND MUST NOT BE DISPOSED OF IN A FIRE OR EXPOSED TO TEMPERATURES BELOW -20 C OR ABOVE +70 C.

Connections



Common

Enable Reset Button

External Reset

Low Speed Count Input

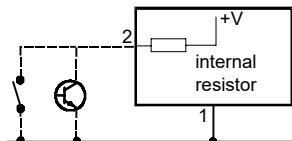
High Speed Count Input

}

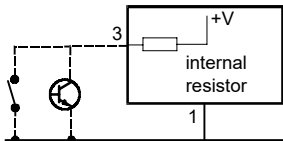
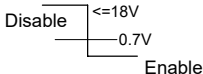
} 18V

} max

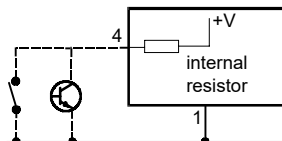
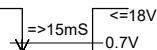
}



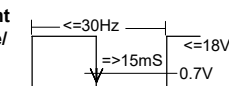
Enable Reset Button
(TTL/CMOS)



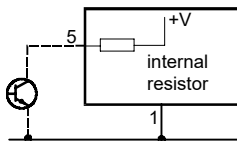
External Reset
(Contact Closure/
Open Collector)



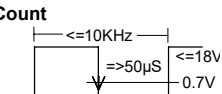
Low Speed Count
(Contact Closure/
Open Collector)



2



High Speed Count
(TTL/CMOS)



Please note:

Any signal cables connected to this device must not exceed 30 metres in length. If signal cables are installed that are routed outside the building, it will be necessary to install additional surge protection devices.

Mounting

	Panel Cutout Size	Maximum Panel Thickness
using Built-in Fixing Clip	45.5 x 22.5mm (1.78 x 0.88")	7.5mm
using 50 x 25 Adaptor	50.3 x 25.3mm (1.98 x 0.99")	7.5mm
using Screw-Fixed Bezel	<= 48 x 33mm	----

Spezifikation

Batterie

Nicht-ersetzbare Lithiumbatterie.
Nutzungsdauer mindestens 10 Jahre bei
20°C

Anzeige

Achtstelliges schwarzes LCD,
Zeichenhöhe 7 mm

Zählbereich

99999999 - Überlauf zu 0

Betriebstemperatur

-10°C bis +60°C

Lagerungstemperatur

-20°C bis +60°C

Betriebshöhe

Bis zu 2.000 m

Relative Feuchte

Max. 80% bis zu 31°C, Abnahme auf
50% bei max. 40°C

Dichtung

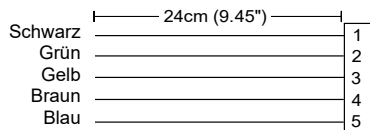
Frontblende bei Verwendung von
mitgelieferter Befestigungsklammer und
Dichtung nach IP65 abgedichtet.



ACHTUNG

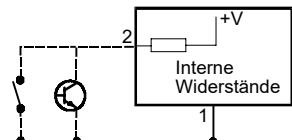
DIESES GERÄT ENTHÄLT EINE LITHIUMBATTERIE UND DARF DAHER BEI DER
ENTSORGUNG NICHT VERBRANNT ODER TEMPERATUREN UNTER -20°C
ODER ÜBER +70°C AUSGESETZT WERDEN.

Anschlüsse

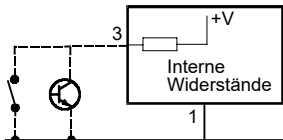
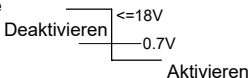


Masse

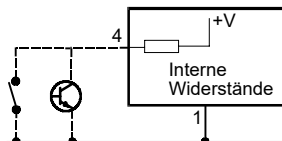
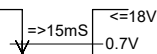
Rückstelltaste aktivieren	}
Externe Rücksetzung	} 18V
Langsamer Zählengang	} max
Elektronischer Zählengang	}



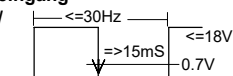
**Rückstelltaste
aktivieren
(TTL/CMOS)**



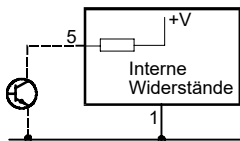
**Externe Rücksetzung
(Schließkontakt /
Open Collector)**



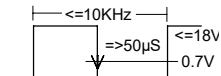
**Langsamer Zählengang
(Schließkontakt /
Open Collector)**



4



**Elektronischer
Zählengang
(TTL/CMOS)**



Bitte beachten Sie folgendes:

Die Signalleitungen, die an dieses Gerät angeschlossen werden, dürfen eine Gesamtlänge von 30m nicht überschreiten. Werden Signalleitungen außerhalb von Gebäuden verlegt, müssen zusätzliche Schutzmaßnahmen gegen Surge Störimpulse vorgesehen werden.

Montage

	Abmessungen der Aussparung für Frontblende	Maximale Dicke der Frontblende
Mit eingebauter Befestigungsklammer	45 x 22 (+0.5 -0.0)mm	7.5mm
Mit Adapter 50 x 25	50 x 25 (+0.5 -0.0)mm	7.5mm
Mit Frontrahmen mit Schraubenbefestigung	$\leq 48 \times 33$ mm	----

Caractéristiques

Pile

Pile au lithium non remplaçable.
Durée de vie prévue : 10 ans à 20°C

Afficheur

à cristaux liquides noirs 8 chiffres,
hauteur 7 mm

Plage de comptage

99999999 - décroissant jusqu'à 0

Température de fonctionnement

de -10°C à +60°C

Température de stockage

de -20°C à +60°C

Altitude

Jusqu'à 2000m

Humidité relative

80% max jusqu'à 31°C ; 50% max à 40°C

Étanchéité

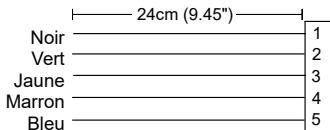
IP65 en face avant avec montage par clip et le joint d'étanchéité fourni.



RECOMMANDATION IMPORTANTE

CET APPAREIL CONTIENT UNE PILE AU LITHIUM ET NE DOIT PAS ÊTRE JETÉ DANS UN FEU OU EXPOSÉ À DES TEMPÉRATURES INFÉRIEURES À -20°C OU SUPÉRIEURES À +70°C.

Raccordements



Commun

Activation Poussoir de RAZ

Remise à Zéro Externe

Entrée Comptage basse vitesse

Entrée Comptage haute vitesse

}

}

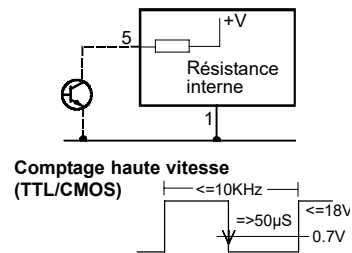
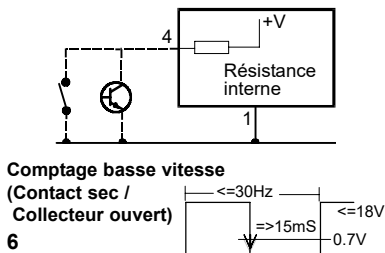
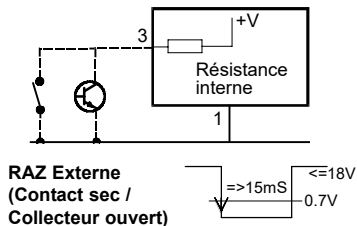
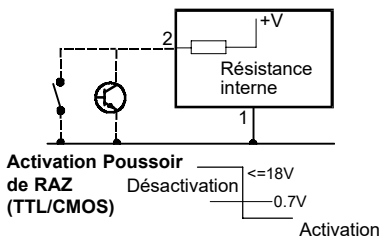
}

}

18V

max

}



Veillez noter :

La longueur de tout câble mesure (signal) raccordé à cet appareil ne doit pas excéder 30 mètres. Si les câbles « mesure » passent à l'extérieur du bâtiment, il est nécessaire d'installer des dispositifs additionnels de protections de surtensions.

Montage

	Découpe	Epaisseur maxi du panneau
avec clip de fixation	45 x 22 (+0.5 -0.0)mm	7.5mm
avec l'adaptateur 50 x 25	50 x 25 (+0.5 -0.0)mm	7.5mm
avec cadre à vis	<= 48 x 33mm	----

Especificaciones

Batería

Batería de litio no reemplazable.
Vida útil esperada de 10 años a 20°C

Pantalla

LCD de 8 dígitos negros, caracteres de 7mm de altura

Rango de conteo

0- 99999999 (vuelve a 0)

Temperatura de operación

-10°C a +60°C

Temperatura de almacenaje

-20°C a +60°C

Altitud

Hasta 2000m

Humedad Relativa

80% máx. hasta 31°C, disminuyendo al 50% máx. a 40°C

Grado de protección

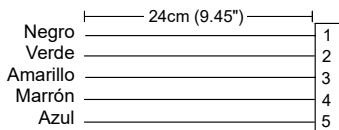
Panel frontal sellado según IP65 cuando se monta a presión con el accesorio de fijación y la junta de goma, ambos proveídos.



ATENCIÓN

ESTA UNIDAD CONTIENE UNA BATERÍA DE LITIO QUE NO DEBE SER SITUADA CERCA DEL FUEGO NI EXPUESTA A TEMPERATURAS FUERA DEL RANGO DE -20°C A +70°C.

Conexiones



Común

Pulsador del reset habilitado

Reset externo

Entrada de conteo de baja velocidad

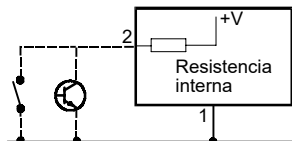
Entrada de conteo de alta velocidad

}

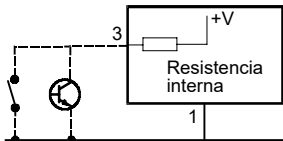
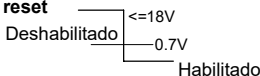
} 18V

} máx

}

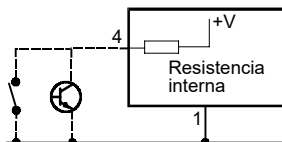
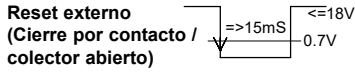


Pulsador del reset habilitado (TTL/CMOS)



Reset externo

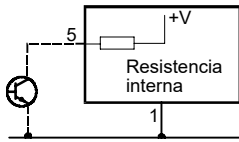
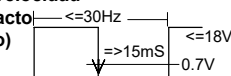
(Cierre por contacto / colector abierto)



Conteo de baja velocidad

(Cierre por contacto / colector abierto)

8



Conteo de alta velocidad

(TTL/CMOS)



Nota:

Cualquier cable de señal conectado a esta unidad no debe de exceder de 30 metros. Si se instalan cables de señal que sean llevados fuera del edificio, sera necesario instalar unidades adicionales de protección de onda.

Montaje

	Tamaño del recorte rectangular del panel	Espesor máximo del panel
Utilizando ael accesorio de fijación para empotrar	45 x 22 (+0.5 -0.0)mm	7.5mm
Utilizando el adaptador rectangular de 50x25	50 x 25 (+0.5 -0.0)mm	7.5mm
Utilizando el marco de fijación con tornillos	<= 48 x 33mm	----

Specifiche

Batterie

- Batteria al litio non sostituibili.
- Durata prevista 10 anni a 20°C

Display

- Display a cristalli liquidi nero a 8 cifre, caratteri da 7mm

Gamme di conteggio

- 99999999 – ritorno a 0

Temperatura di funzionamento

- da -10°C a +60°C

Temperatura di immagazzinamento

- da -20°C a +60°C

Altitudine

- Fino a 2000m

Umidità Relativa

- Max 80% fino a 31°C, a scendere fino al 50% max. a 40°C

Tenuta

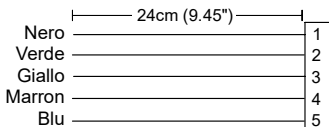
- Pannello frontale con tenuta IP65 in associazione al fissaggio e alla guarnizione forniti in dotazione.



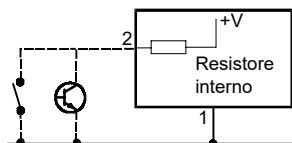
ATTENZIONE

QUESTA UNITA' CONTIENE UNA BATTERIA AL LITIO E PERTANTO NON DEVE ESSERE SMALTIMA MEDIANTE COMBUSTIONE O ESPOSTA A TEMPERATURE INFERIORI A -20°C O SUPERIORI A +70°C.

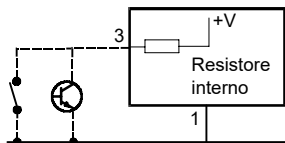
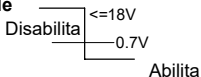
Collegamenti



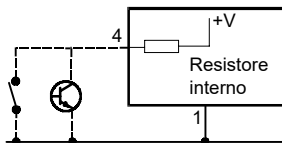
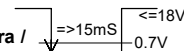
- Comune
- Abilita Pulsador de Reset }
Reset esterno } 18V
- Ingresso conteggio bassa velocità } max
- Ingresso conteggio alta velocità }



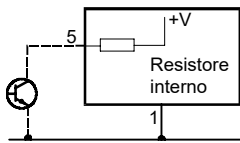
Abilita Pulsador de Reset (TTL/CMOS)



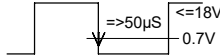
Reset esterno (Collettore chiusura / Apertura contatto)



Conteggio bassa velocità (Collettore chiusura / Apertura contatto)



Conteggio alta velocità (TTL/CMOS)

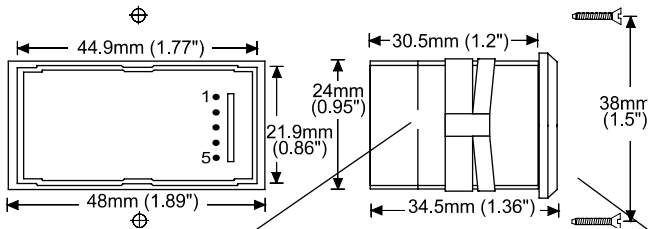


Preghiamo Notare:

Ogni cavo di segnale collegato a questo dispositivo non può essere più lungo di 30 metri. Se i cavi di segnale sono installati su un percorso esterno all'edificio, è necessario installare dispositivi di protezione di rete aggiuntivi.

Montaggio	Dimensioni apertura pannello	Massimo spessore di pannello
con fissaggio incorporato	45 x 22 (+0,5 - 0,0)mm	7,5mm
con adattatore 50 x 25	50 x 25 (+0,5 - 0,0)mm	7,5mm
con cornice a vite	<= 48 x 33mm	---

Dimensions, Abmessungen, Dimensiones, Dimensioni



Fixing Clip, Befestigungsklammer
Clip de fixation, Accesorio de
fijación, Clip di fissaggio

Screw-fixed bezel, Frontrahmen mit
Schraubenbefestigung,
Cadre à vis, Marco fijado con tornillos,
Cornice a vite

UK Office

Trumeter, Pilot Mill, Alfred Street, Bury, Lancashire
BL9 9EF, United Kingdom
Tel: +44 161 674 0960
Email: sales.uk@trumeter.com

North America Office

Trumeter, 702 S. Military Trail, Deerfield Beach, Florida
FL 33442, USA
Tel: +1 954 725 6699
Email: sales.usa@trumeter.com

Asia Pacific Distributor

Innovative Design Technologies Sdn. Bhd, Lot 5881, Lorong Iks Bukit Minyak 1
Taman Perindustrian Iks, 14000 Bukit Tengah
Penang, Malaysia
Web: www.idtworld.com
Tel: + 604 5015700
Email: info@idtworld.com

www.trumeter.com