

LOC	DIST	REVISIONS	
HB	-	P	LTR
DESCRIPTION		DATE	DWN
REMOVED THE RBG ON THE BASE TO CASE ECO-15-011310		04DEC2015	HYSICHL

APVD	NAME
-	XIAONING.ZHANG
PRODUCT SPEC	APPLICATION SPEC
-	-
WEIGHT	FINISH
-	-

DWN	FU_BO	24AUG2012
CHK	N.FUNAYAMA	-
APVD	XIAONING.ZHANG	-
PRODUCT SPEC	APPLICATION SPEC	-
WEIGHT	FINISH	-

APVD	NAME
-	XIAONING.ZHANG
PRODUCT SPEC	APPLICATION SPEC
-	-
WEIGHT	FINISH
-	-

APVD	NAME
-	XIAONING.ZHANG
PRODUCT SPEC	APPLICATION SPEC
-	-
WEIGHT	FINISH
-	-

APVD	NAME
-	XIAONING.ZHANG
PRODUCT SPEC	APPLICATION SPEC
-	-
WEIGHT	FINISH
-	-

APVD	NAME
-	XIAONING.ZHANG
PRODUCT SPEC	APPLICATION SPEC
-	-
WEIGHT	FINISH
-	-

APVD	NAME
-	XIAONING.ZHANG
PRODUCT SPEC	APPLICATION SPEC
-	-
WEIGHT	FINISH
-	-

APVD	NAME
-	XIAONING.ZHANG
PRODUCT SPEC	APPLICATION SPEC
-	-
WEIGHT	FINISH
-	-

APVD	NAME
-	XIAONING.ZHANG
PRODUCT SPEC	APPLICATION SPEC
-	-
WEIGHT	FINISH
-	-

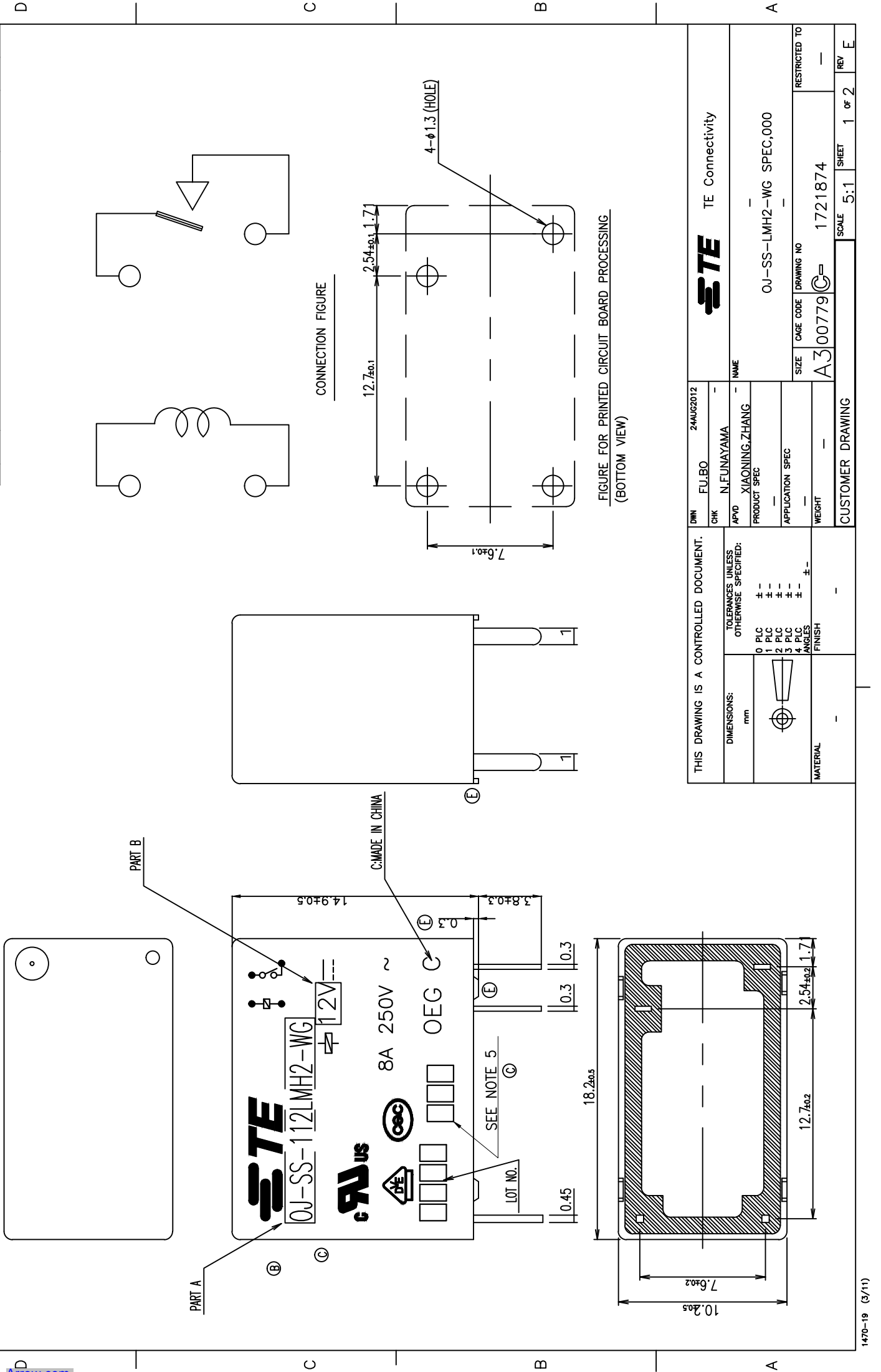


FIGURE FOR PRINTED CIRCUIT BOARD PROCESSING (BOTTOM VIEW)

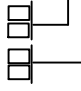
THIS DRAWING IS A CONTROLLED DOCUMENT.		TE Connectivity	
DIMENSIONS:	TOLERANCES UNLESS OTHERWISE SPECIFIED:	APVD	NAME
mm	0 PLC ±	XIAONING.ZHANG	-
	1 PLC ±	PRODUCT SPEC	-
	2 PLC ±	APPLICATION SPEC	-
	3 PLC ±	WEIGHT	-
	4 PLC ±	FINISH	-
	ANGLES ±		
MATERIAL			
-			

CAGE CODE	DRAWING NO	RESTRICTED TO
A300779	1721874	-
SIZE	SCALE	SHEET
1721874	5:1	1 OF 2
REV	REV	REV
-	-	-

Diagram dimension	Tolerance
0.99mm max.	±0.1mm
1 - 2.99mm	±0.2mm
3mm min.	±0.3mm

TE PART NO	DESCRIPTION	PART B	PART A	TYPE
1721874-6	OJ-SS-124LMH2-WG	24V	OJ-SS-124LMH2-WG	f
1721874-5	OJ-SS-112LMH2-WG	12V	OJ-SS-112LMH2-WG	e
1721874-4	OJ-SS-109LMH2-WG	9V	OJ-SS-109LMH2-WG	d
1721874-3	OJ-SS-106LMH2-WG	6V	OJ-SS-106LMH2-WG	c
1721874-2	OJ-SS-105LMH2-WG	5V	OJ-SS-105LMH2-WG	b
1721874-1	OJ-SS-103LMH2-WG	3V	OJ-SS-103LMH2-WG	a

RELAY TYPE

- NOTES:
- 1.TERMINAL DIMENSION BEFORE TINNING.
 - 2.LOT NO. SYSTEM AS FOLLOWING:

 - ① 5.ADD LOT NO. SYSTEM AS FOLLOWING;
 I, DIGITS FOR DAY OF THE WEEK
 1...MONDAY IN THIS WEEK;
 2...TUESDAY IN THIS WEEK;
 7...SUNDAY IN THIS WEEK
 II, DIGITS FOR SHIFT OF THE DAY
 1...DAY SHIFT IN THIS DAY;
 2...NIGHT SHIFT IN THIS DAY;
 III, ONE CHARACTER DISTINGUISH THE LINE IDENTITY, SUCH AS: AB....Z
 - ②.TERMINAL DIMENSION IS BEFORE SOLDER DIP;
 - ③.FOR THE TIN-PLATING OF THE PINS:
 +0.1mm FOR WIDTH,THICKNESS AND DIAMETER.
 +0.5mm FOR LENGTH.
 - ④ 4..MARKING FROM INK TO LASER AND USING WELDING CONTACT

INCOMBUSTIBILITY	TREATMENT	MATERIAL	DESCRIPTION	ITEM
		SEAL (BASE & BOBBIN)		15
		MM79	MAGNETIC WIRE	14
94V-0		NYLON	CASE	13
94V-0		P.E.T	BASE	12
94V-0		NYLON	BOBBIN	11
94V-0	SOLDER DIP	C.P WIRE	COIL TERMINAL	10
		P.P.S	CARD	9
		Ag ALLOY	MOVABLE CONTACT	8
		Ag ALLOY	NO.CONTACT	7
		STEEL	HINGE SPRING	6
	SOLDER DIP	Cu ALLOY	NO.TERMINAL	5
	SOLDER DIP	Cu ALLOY	MOVABLE SPRING	4
	NIP	STEEL	CORE	3
	NIP	STEEL	ARMATURE	2
	NIP	STEEL	YOKE	1

STE TE Connectivity

DWN F.U.BO 24AUG2012
 CHK N.FUNAYAMA
 APVD XIAONING.ZHANG
 PRODUCT SPEC
 APPLICATION SPEC
 WEIGHT
 FINISH

NAME OJ-SS-LMH2-WG SPEC,000

SIZE A300779 G= 1721874
 CAGE CODE DRAWING NO
 RESTRICTED TO

SCALE 5:1 SHEET 2 of 2 REV E