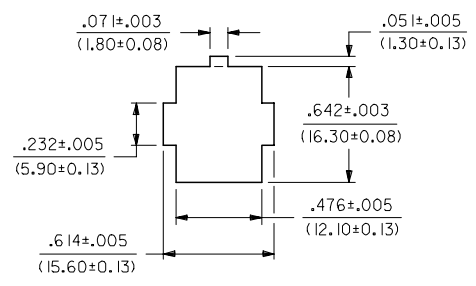
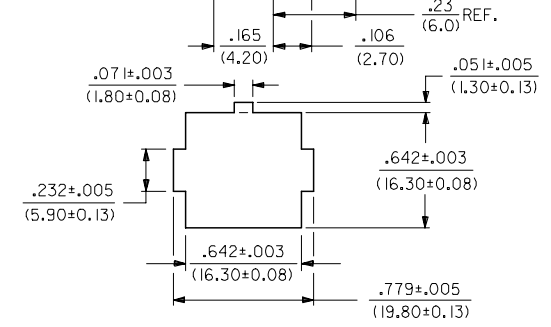
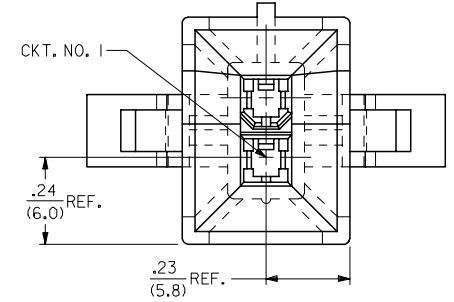
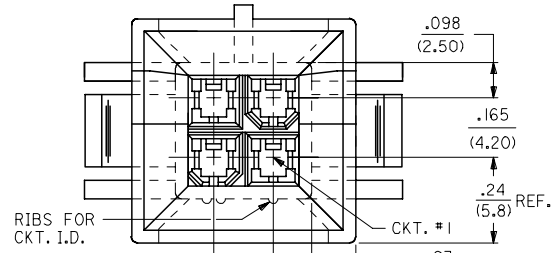
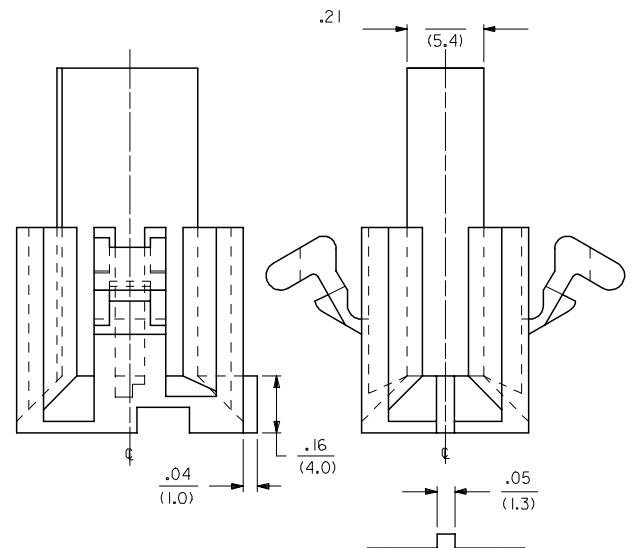
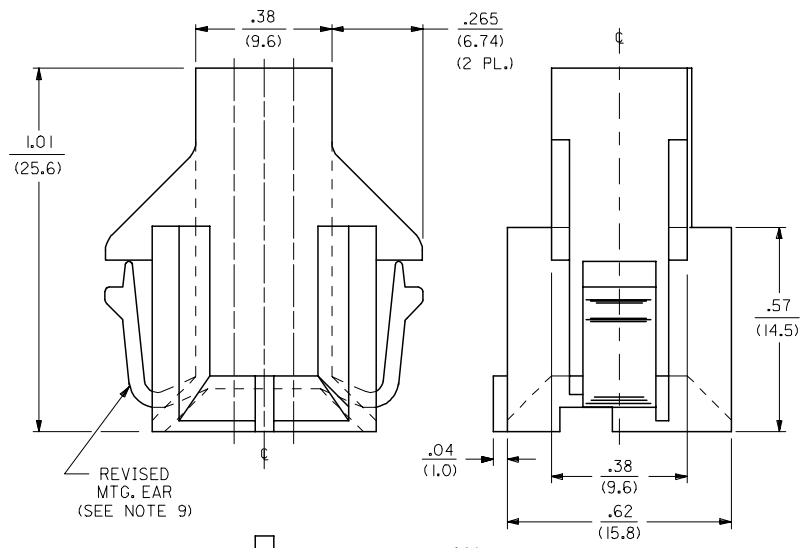


13 12 11 10 9 8 7 6 5 4 3 2 1

J
I
H
G
F
E
D
C
B
A

J
I
H
G
F
E
D
C
B
A



RECOMMENDED CUT-OUT FOR .063/(1.60)
MAX. THICK P.C. BOARD. (4 CKT'S.)

RECOMMENDED CUT-OUT FOR .063/(1.60)
MAX. THICK P.C. BOARD. #1 (2 CKT'S.)

SCALE: 2X

SCALE: 2X

4 CKT.

2 CKT.

MODIFIED TITLE BLK EC NO: UCP2007-3279 DRWALLSCHMIDT 2007/09/05 CHKD:LSCHMIDT 2007/09/07 APPR:FSM TH 2007/09/07 REVISIONS DESCRIPTION	QUALITY SYMBOLS	GENERAL TOLERANCES (UNLESS SPECIFIED)	DIMENSION STYLE	SCALE	DESIGN UNITS	THIRD ANGLE PROJECTION
	$\nabla=0$ $\nabla=0$	mm INCH 4 PLACES ± --- ± --- 3 PLACES ± --- ± .010 2 PLACES ± 0.25 ± .015 1 PLACE ± 0.38 ± --- ANGULAR ± 5 °	IN/MM	4:1	METRIC	
			DRAWN BY	DATE	TITLE	
			CHECKED BY	DATE		
			APPROVED BY	DATE		
		MATERIAL NO.		DOCUMENT NO.	SHEET NO.	
		DRAFT WHERE APPLICABLE MUST REMAIN WITHIN DIMENSIONS	SEE SHEET 4	THIS DRAWING CONTAINS INFORMATION THAT IS PROPRIETARY TO MOLEX INCORPORATED AND SHOULD NOT BE USED WITHOUT WRITTEN PERMISSION		

PLUG HOUSING B.M.I.
2-24 CIRCUITS
MINI-FIT SERIES

molex MOLEX INCORPORATED

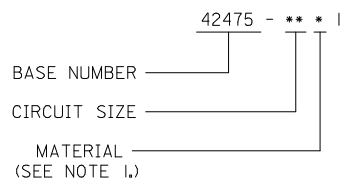
SD-42475-***1

2 OF 4

12 11 10 9 8 7 6 5 4 3 2 1

	13	12	11	10	9	8	7	6	5	4	3	2	1		
	PART NUMBER	ENG. NUMBER	CKT. SIZE	MATERIAL (SEE NOTE 1.)	PART NUMBER	CKT. SIZE	MATERIAL (SEE NOTE 1.)	MOUNTING EAR TYPE							
								CKT. SIZE	DESIGN A, DESIGN B (SEE SHEET I)						
J	NOT TOOLED	42475-0211	2	I						42475-***2I, 5558-GS*	42474-***2I, 5556-PBGS*P	94V-0	PHOS. BRZ.	GOLD	
										42475-***1I, 5558-GS*	42474-***1I, 5556-PBGS*P	94V-2			
	15-06-0045	42475-0411	4		42475-0431	4		2	N/A	42475-***2I, 5558-GS*	42474-***2I, 5556-GS*P	94V-0	BRASS	GOLD	
										42475-***1I, 5558-GS*	42474-***1I, 5556-GS*P	94V-2			
	15-06-0065	42475-0611	6		42475-0631	6		4	B	42475-***2I, 5558-PBS*	42474-***2I, 5556-PBS*P	94V-0	PHOS. BRZ.	TIN	
										42475-***1I, 5558-PBS*	42474-***1I, 5556-PBS*P	94V-2			
I	15-06-0085	42475-0811	8		42475-0831	8		6	B	42475-***2I, 5558-S*	42474-***2I, 5556-S*P	94V-0	BRASS	TIN	
										42475-***1I, 5558-S*	42474-***1I, 5556-S*P	94V-2			
	15-06-0105	42475-1011	10		42475-1031	10		8	A	42475-***2I, 5558-GS*	A-42385-***D2	94V-0	PHOS. BRZ.	GOLD	
										42475-***1I, 5558-GS*	A-42385-***C2	94V-2			
	NOT TOOLED	42475-1211	12			12		10	B	42475-***2I, 5558-GS*	A-42385-***B2	94V-0	BRASS	GOLD	
										42475-***1I, 5558-GS*	A-42385-***A2	94V-2			
	15-06-0145	42475-1411	14		42475-1431	14		12	N/A	42475-***2I, 5558-PBS*	A-42385-***D1	94V-0	PHOS. BRZ.	TIN	
										42475-***1I, 5558-PBS*	A-42385-***C1	94V-2			
H	NOT TOOLED	42475-1611	16			16		14	B	42475-***2I, 5558-S*	A-42385-***B1	94V-0	BRASS	TIN	
										42475-***1I, 5558-S*	A-42385-***A1	94V-2			
	15-06-0185	42475-1811	18		42475-1831	18		16	N/A	PLUG HOUSING/ MALE TERMINAL		MATING CONNECTOR	HSG. MAT'L.	TERM. MAT'L.	PLATING
													MATING CONNECTOR FEATURES		
	15-06-0205	42475-2011	20		42475-2031	20		18	A & B						
	NOT TOOLED	42475-2211	22			22		20	A						
	15-06-0245	42475-2411	24	I	42475-2431	24	3	22	N/A						
G								24	B						
	NOT TOOLED	42475-0221	2	2		2	4								
	15-06-0046	42475-0421	4		42475-0441	4									
F	15-06-0066	42475-0621	6			6									
	50-36-2323	42475-0821	8			8									
	15-06-0106	42475-1021	10		42475-1041	10									
	NOT TOOLED	42475-1221	12			12									
	15-06-0146	42475-1421	14		42475-1441	14									
E	NOT TOOLED	42475-1621	16			16									
	15-06-0186	42475-1821	18		42475-1841	18									
	15-06-0206	42475-2021	20		42475-2041	20									
	NOT TOOLED	42475-2221	22			22									
D	15-06-0246	42475-2421	24	2	42475-2441	24	4								

LEGEND:



ADDED 50362323 EC NO: UCP2009-0892 DRWN:KLOSTNER 2008/10/09 CHKD:JBELL 2008/10/14 APPR:FSMITH 2008/10/15	QUALITY SYMBOLS	GENERAL TOLERANCES (UNLESS SPECIFIED)	DIMENSION STYLE	SCALE	DESIGN UNITS	THIRD ANGLE PROJECTION																													
	$\nabla=0$ $\nabla=0$	<table border="1"> <tr> <th></th> <th>mm</th> <th>INCH</th> </tr> <tr> <td>4 PLACES</td> <td>\pm ---</td> <td>\pm ---</td> </tr> <tr> <td>3 PLACES</td> <td>\pm ---</td> <td>\pm .010</td> </tr> <tr> <td>2 PLACES</td> <td>\pm 0.25</td> <td>\pm .015</td> </tr> <tr> <td>1 PLACE</td> <td>\pm 0.38</td> <td>\pm ---</td> </tr> </table>		mm	INCH	4 PLACES	\pm ---	\pm ---	3 PLACES	\pm ---	\pm .010	2 PLACES	\pm 0.25	\pm .015	1 PLACE	\pm 0.38	\pm ---	<table border="1"> <tr> <th colspan="2">IN/MM</th> </tr> <tr> <td>DRAWN BY</td> <td>DATE</td> </tr> <tr> <td>GEP</td> <td>1989/07/18</td> </tr> <tr> <td>CHECKED BY</td> <td>DATE</td> </tr> <tr> <td>RJF</td> <td>1989/07/18</td> </tr> <tr> <td>APPROVED BY</td> <td>DATE</td> </tr> <tr> <td>RAS</td> <td>1989/07/18</td> </tr> </table>	IN/MM		DRAWN BY	DATE	GEP	1989/07/18	CHECKED BY	DATE	RJF	1989/07/18	APPROVED BY	DATE	RAS	1989/07/18	4:1	METRIC	
		mm	INCH																																
	4 PLACES	\pm ---	\pm ---																																
3 PLACES	\pm ---	\pm .010																																	
2 PLACES	\pm 0.25	\pm .015																																	
1 PLACE	\pm 0.38	\pm ---																																	
IN/MM																																			
DRAWN BY	DATE																																		
GEP	1989/07/18																																		
CHECKED BY	DATE																																		
RJF	1989/07/18																																		
APPROVED BY	DATE																																		
RAS	1989/07/18																																		
S1	DRAFT WHERE APPLICABLE MUST REMAIN WITHIN DIMENSIONS	SEE CHART	MATERIAL NO. SD-42475-***1	DOCUMENT NO. SD-42475-***1	SHEET NO. 4 OF 4	TITLE PLUG HOUSING B.M.I. 2-24 CIRCUITS, MINI-FIT SERIES																													
THIS DRAWING CONTAINS INFORMATION THAT IS PROPRIETARY TO MOLEX INCORPORATED AND SHOULD NOT BE USED WITHOUT WRITTEN PERMISSION																																			