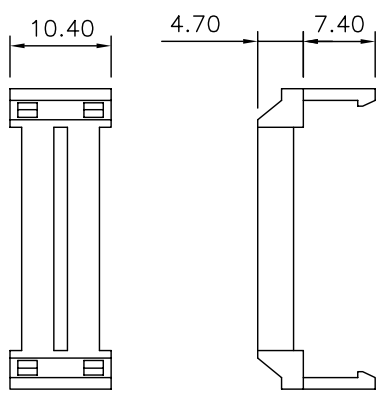
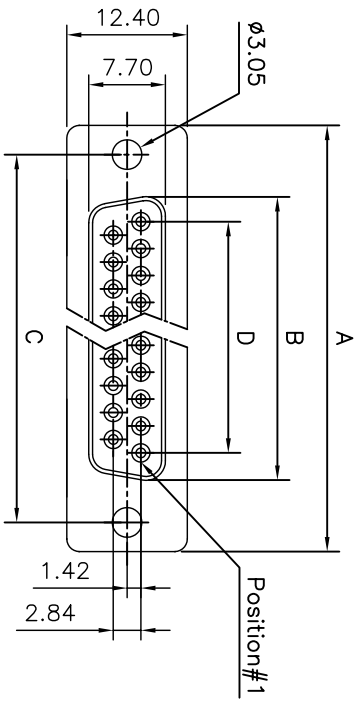
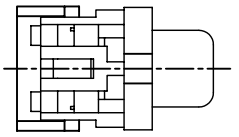
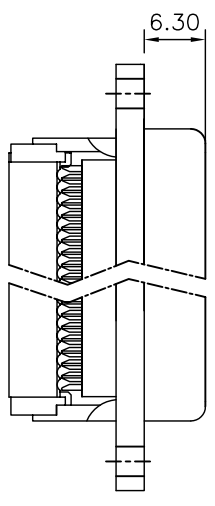


This document is the property of Amphenol Corporation and is delivered on a non-exclusive basis. It is not to be reproduced, stored in a retrieval system, or transmitted in any form or by any means, electronic, mechanical, photocopying, recording, or by any information storage and retrieval system, without the prior consent, in writing, of Amphenol Corporation. All rights are reserved. It is intended for use only in connection with the equipment to which it is related.



STRAIN RELIEF



Customer drawing

Nb OF CONTACTS	A	B	C	D
09	30.50	16.00	25.00	11.08
15	39.00	24.27	33.32	19.39
25	53.08	38.22	47.04	33.24
37	69.40	54.65	63.50	49.86



REVISIONS		DATE	APPROVED
1	SMI EON	11/13/08	

D-SUB TECHNICAL DATA

BODY : Glass filled thermoplastic. Flame retarding to UL94 V-0

CONTACTS : Brass

15u" min gold over 50u" min nickel on mating area
100u" min tin over 50u" min nickel on solder area

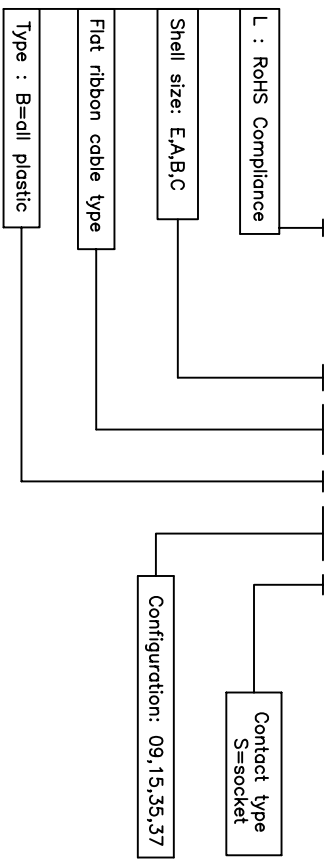
ELECTRICAL : Voltage rating : 250 V RMS at 60 Hz
Current rating : 5A
Withstanding voltage :1000 V RMS at 60 Hz for one minute
Insulation resistance >1000 M Ohms
Contact resistance 20 mOhms max.

CLIMATIC : Temperature range -40 °C up to 125°C

MARKING : Amphenol...(Series No.)
Commercial reference
Manufacturing date

PRODUCT CODE

L 117DXFRBXXS



DIMENSIONS SPECIFIED		APPROVAL		DATE	
TOLERANCES	METRIC	DRAWN	Checked	H/18/08	
0.40		CHECKED	DATE	11/18/08	
0.30					
0.20					
5°					

FOR MATERIALS AND FINISHES
REMOVE SHARP EDGES
DIMENSIONS
TOLERANCES
SCALE

ANGLE OF PROJECTION

SIZE DRAWING NO. A4
SCALE NONE
SHEET 1 OF 1

Amphenol®
IDC Flat Cable D-Sub Series