

This document is the property of Amphenol Corporation and is delivered on the express condition that it is not to be disclosed, reproduced or used, in whole or in part, for manufacture or sale by anyone other than Amphenol Corporation without the prior consent, & that no right is granted to disclose or to use any information in this document.

Customer Drawing

| REVISIONS | | | | |
|-----------|------|-----------------------|----------|----------|
| SYM | ECN | DESCRIPTION | DATE | APPROVED |
| 1 | HK-- | First Release Drawing | 03/20/08 | IP |
| 2 | HK-- | Update the drawing | 05/04/09 | IP |
| 3 | HK-- | Update the drawing | 05/25/09 | IP |
| 4 | HK-- | Update the drawing | 06/20/14 | IP |

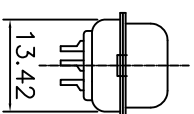
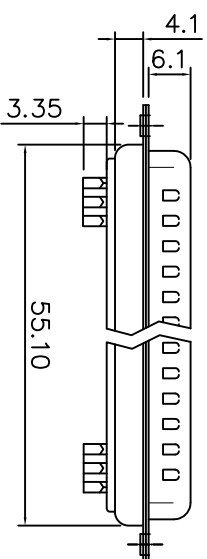
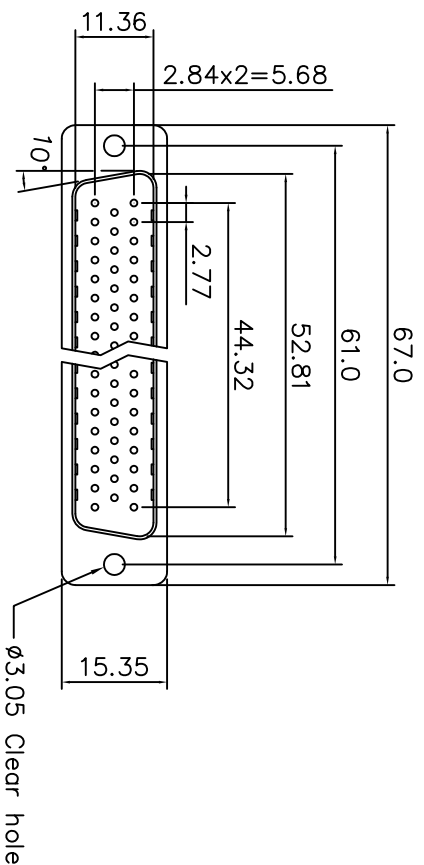
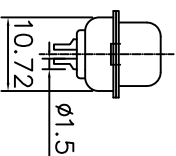
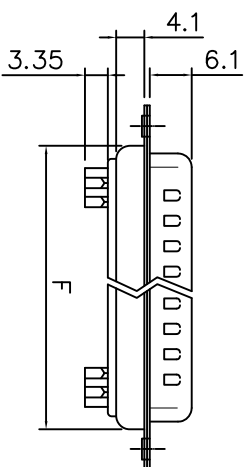
D-SUB TECHNICAL DATA

SHELL : Steel 100u" tin over 50u" min nickel over 50u" min copper
 BODY : Glass-Filled Thermoplastic PBT, UL94V-0,Color Black.
 CONTACTS : Copper Alloy
 30u" min gold over 50u" min nickel on mating area
 100u" min tin over 50u" min nickel on solder area
 ELECTRICAL: Voltage rating : 250 V Rms 60HZ
 Current rating : 3A
 Withstanding Voltage >1000 V Rms 60Hz for 1 minute
 Insulation resistance >1000 M Ohms
 Contact resistance 20 mOhms max.

MARKING : Amphenol...(Series No.)
 Commercial reference
 Manufacturing date

Dimensions

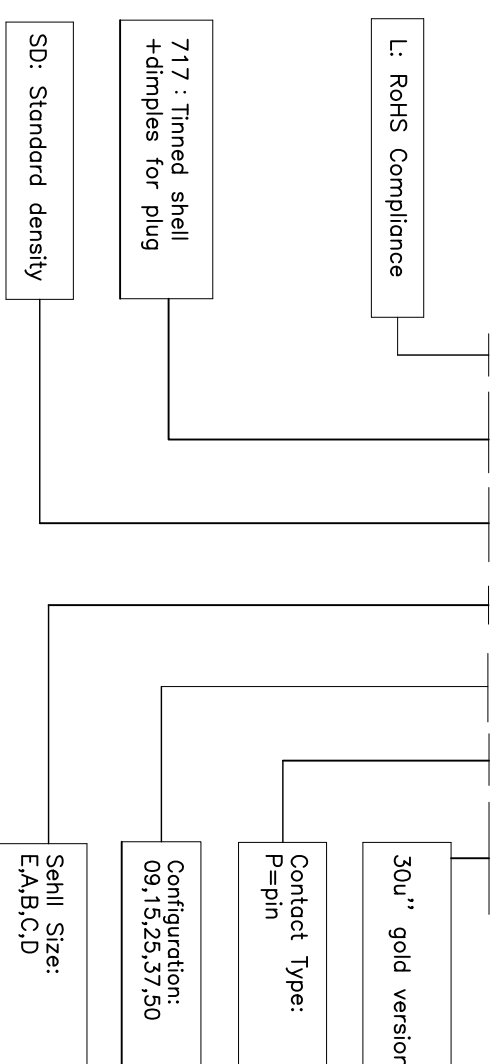
| Positions | A | B | C | E | F |
|-----------|-------|-------|-------|-------|-------|
| 09 | 30.81 | 24.99 | 16.92 | 11.08 | 19.20 |
| 15 | 39.20 | 33.30 | 25.25 | 19.39 | 27.70 |
| 25 | 53.04 | 47.04 | 38.96 | 33.24 | 41.10 |
| 37 | 69.40 | 63.50 | 55.42 | 49.86 | 57.30 |



50 Positions

PRODUCT CODE

L 717 SD X XX P C309



UNLESS OTHERWISE SPECIFIED

| TOLERANCES | U.S. | METRIC |
|---------------|------|--------|
| X, X+/- | 0.38 | 0.25 |
| XX +/- | 0.25 | 0.13 |
| FRACTIONS +/- | | 3' |
| ANGLES +/- | | 3' |

FOR MATERIALS AND FINISHES SEE NOTES

| REMOVE SHARP EDGES | DIMENSIONS | ANGLES |
|--------------------|------------|--------|
| U-S | MIN | MIN |

| APPROVAL | DATE | TITLE |
|--|----------|--|
| Drawn: Felix Lau Checked: Tony Tang | 06/20/14 | Amphenol Amphenol East Asia Limited |

Stamped and formed contact,SD series

| SIZE | DRAWING NO. | SCALE | SHEET | OF | REV. |
|------|-----------------|-------|-------|----|------|
| A4 | L717SDXXXXPC309 | NONE | 1 | OF | 4 |