

This document is the property of Amphenol Corporation and is delivered on the understanding that it is not to be reproduced, stored in a retrieval system, or transmitted in any form or by any means, electronic, mechanical, photocopying, recording, or by any information storage and retrieval system, without the prior consent, in writing, of Amphenol Corporation. If you are not an authorized recipient of this document, you should notify the sender immediately. Amphenol Corporation will not be held responsible for any loss or damage to any data or information in this document.

Customer drawing

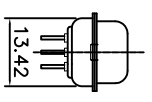
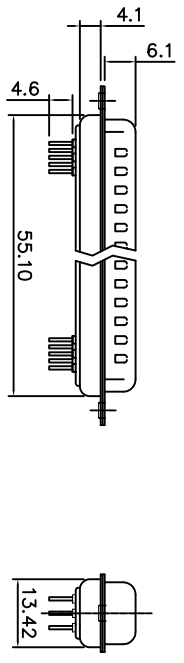
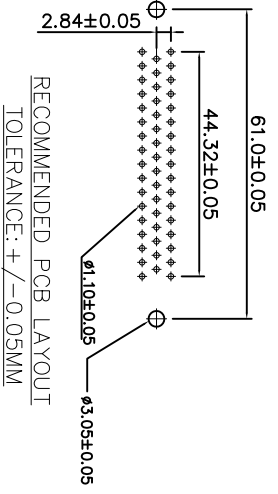
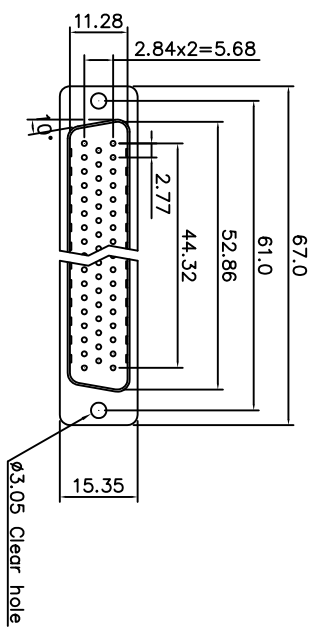
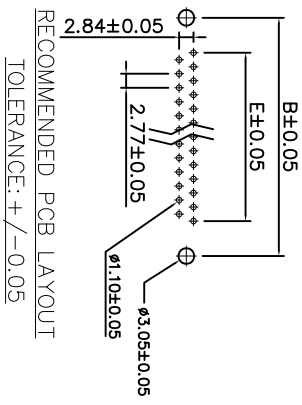
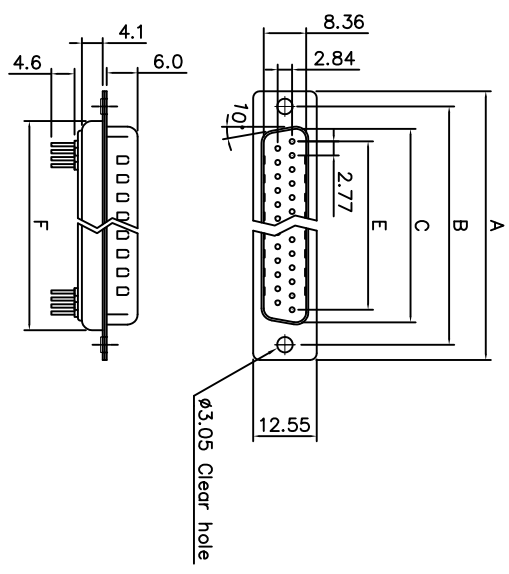
REVISONS			DATE	APPROVED
1	HK--	First Release Drawing	07/18/08	IP
2	HK--	Update the Drawing	06/18/14	IP

D-SUB TECHNICAL DATA

SHELL : Steel 100u" tin over 50u" min nickel over 50u" min copper
 BODY : Glass-Filled Thermoplastic PBT, UL94V-0,color Black
 CONTACTS : Copper Alloy
 Gold flash over 50u" min nickel on mating area
 100u" min tin over 50u" min nickel on solder area
 ELECTRICAL: Voltage rating : 250 V Rms
 Current rating : 3A
 Withstanding Voltage >1000 V Rms
 Insulation resistance >1000 M Ohms
 Contact resistance 20 mOhms max.

MARKING : Amphenol...(Series No.)
 Commercial reference
 Manufacturing date

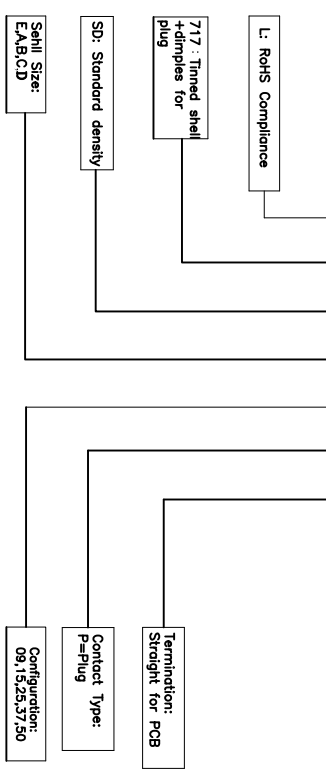
Positions	A	B	C	E	F
9	30.81	24.99	16.92	11.08	19.20
15	39.20	33.30	25.25	19.39	27.70
25	53.04	47.04	38.96	33.24	41.10
37	69.40	63.50	55.42	49.86	57.30



50 POSITIONS

PRODUCT CODE

L 717 SD X XX POL2



UNLESS OTHERWISE SPECIFIED		APPROVAL		DATE	
TOLERANCES	Metric	DRAWN	Ming	06/18/14	
D.S.	ASME	CHECKED	14k	using	06/18/14
XX	+/-				
XX	+/-				
XX	+/-				
XX	+/-				
ANGLES	+/-				
ANGLES	+/-				
	S'				
FOR MATERIALS AND FINISHES		DRAWING FILE :		TITLE	
REMOVE SHARP EDGES		ANGLE OF PROJECTION		Amphenol	
DIMENSIONS		TOLERANCES		Amphenol East Asia Limited	
MM		MM		Stamped and formed contact,SD series	
SCALE		NONE		SIZE DRAWING NO.	
SCALE		NONE		L717SDXXXPOL2	
SCALE		NONE		REV.	
SCALE		NONE		2	
SCALE		NONE		SHEET 1 OF 1	