

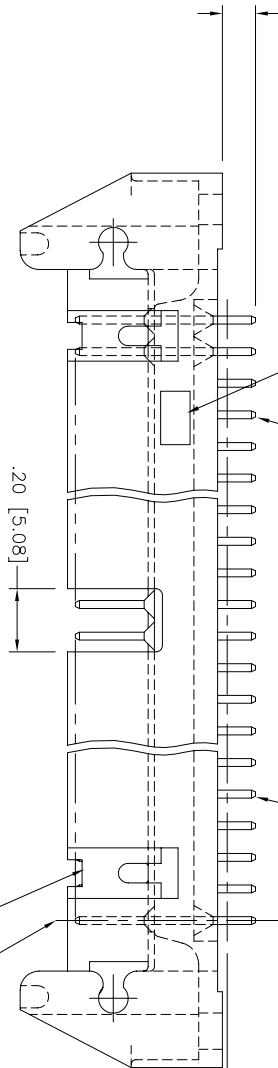
PRODUCT NUMBER
SEE TABLE

DIM "D" ±.010 [±0.25]

NOTE 4

.025±.001 [±.04±.03]
ROUND or SQUARE; SEE TABLE

⊕ .010 / .25 ⊕ X | Y ⊕ AT BASE, TYP.
⊕ .016 / .41 ⊕ X | Y ⊕ AT TIPS, TYP.



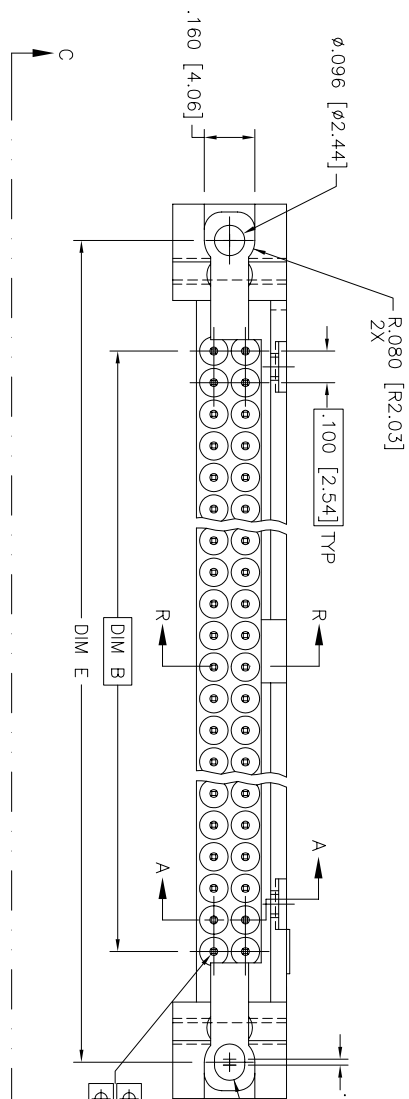
SEED DETAILS ON SH. 2 & TABLE
FOR POLARIZATION FEATURE
ARRANGEMENT AND STYLE

⊕ of PIN 1

.010 [0.25]
TYP

R.048 [R1.22]

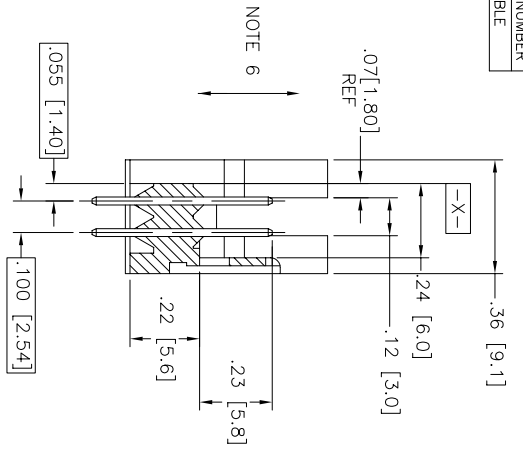
⊕ .010 / .25 ⊕ X | Y ⊕ AT BASE, TYP.
⊕ .016 / .41 ⊕ X | Y ⊕ AT TIPS, TYP.



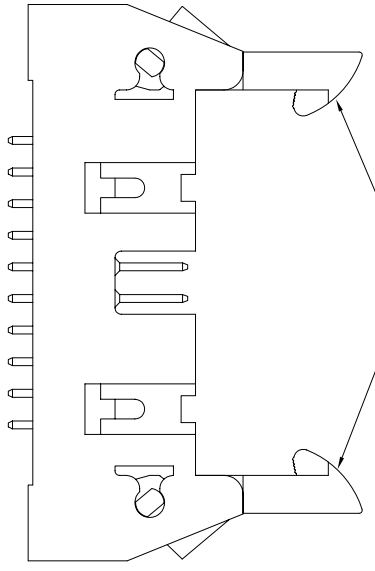
16-508-036,
16-508-002, 16-508-131

mat'l. code	surface	tolerance	projection	product family
	ISO 1302	ISO 406	ISO 1101	QUICKIE HDR, STRIGHT
lit ecn no dr	date	tolerance unless otherwise specified	INCH/MM	title
H V91075 EPK	5/6/99		scale 2:1	3 WALL LATCH, STRIGHT
J V00871 EPK	4/11/00			3 WALL LATCH & EJECT
K V01240 MDR	5/11/00 0'±2'			dwg no
L V06-0344 GIP	3/24/03 dr			66207
M N05-0094 MHT	4/4/05 engr			sheet 1 of 8 size
N M05-0282 ACS	7/22/06 chr			A3
P M07-0368 MHT	8/17/07 oppd			Product Customer Drawing
sheet revision	P P P P P P			
index	1 2 3 4 5 6 7 8			

PRODUCT NUMBER
SEE TABLE

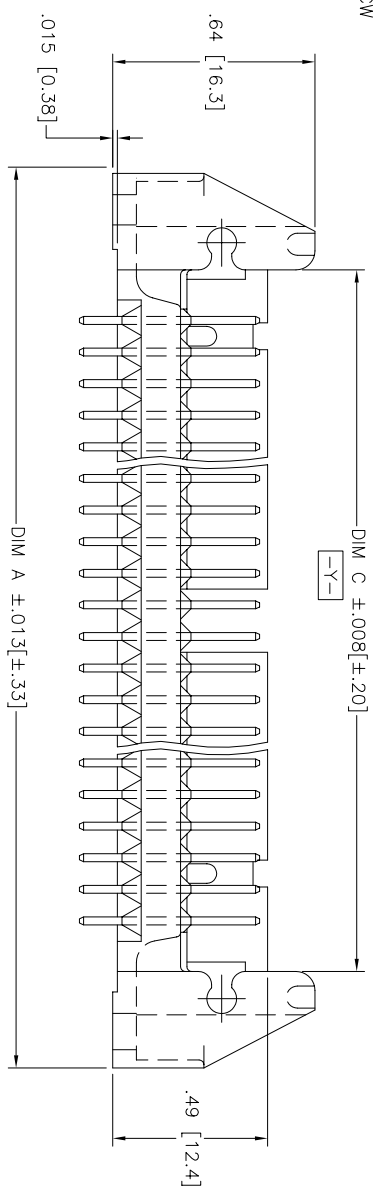


NOTE 6

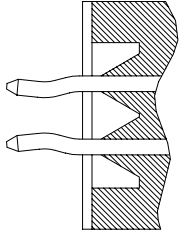


HEADER WITH LATCHES

SECTION A-A
ROTATED 90° CW

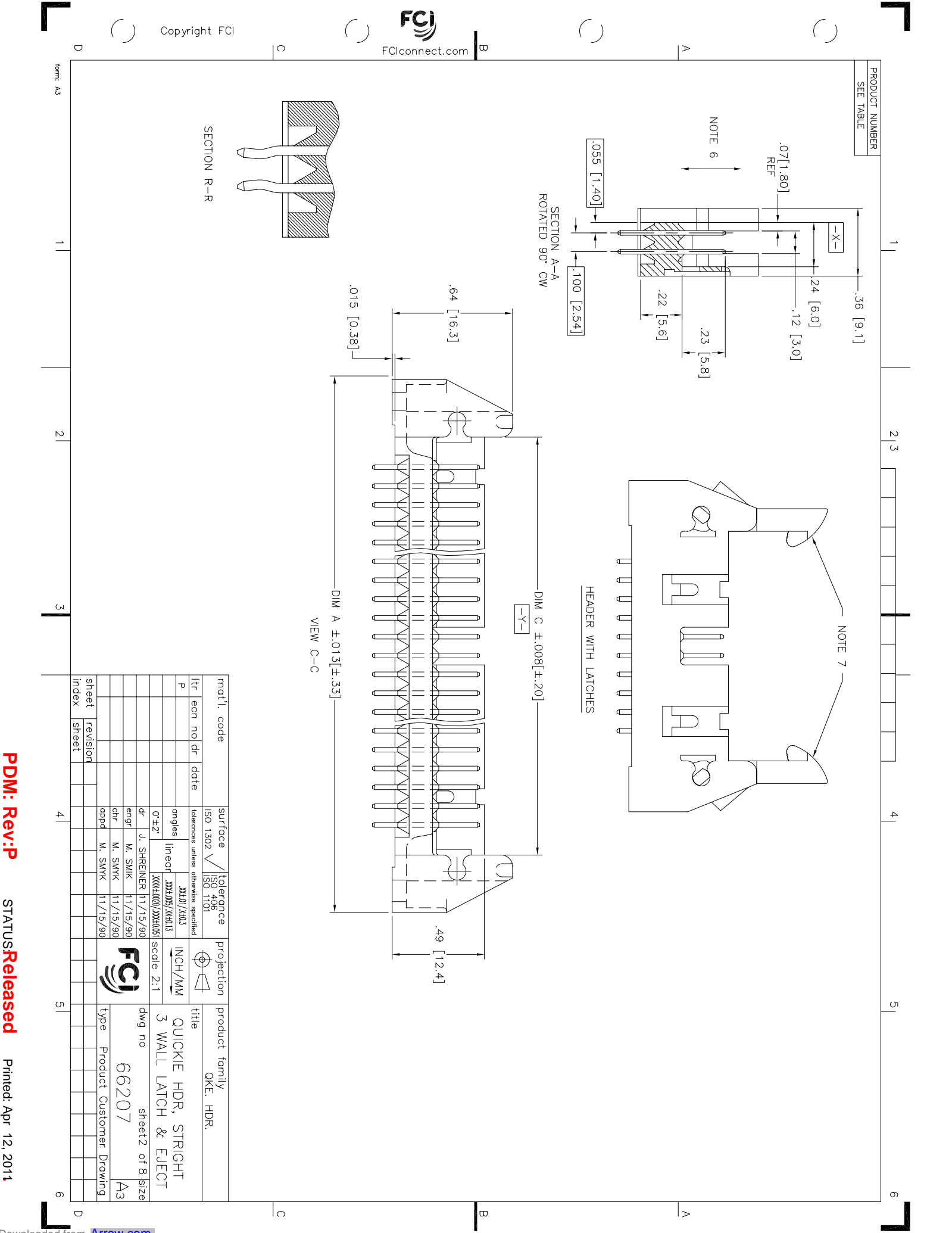


VIEW C-C

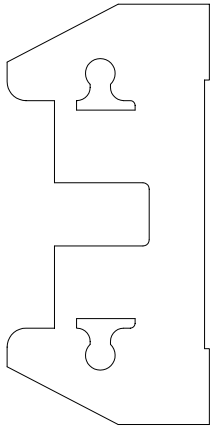


SECTION R-R

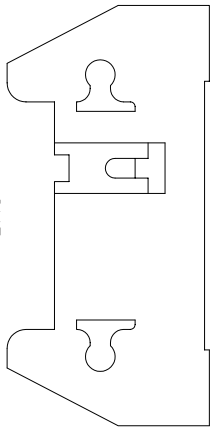
mat'l. code		surface	tolerance	projection	product family
ISO 1302		ISO 406	ISO 1101	QUICKIE HDR, STRIGHT	QKE. HDR.
tracen no/dr		tolerances unless otherwise specified		INCH/MM	
P		angles	linecd	scale 2:1	
		0° ±.2°	JM10/2H13		
			JM10/2H13		
		dr	J. SHREINER	11/15/90	dwg no
		engr	M. SMIK	11/15/90	66207
		chr	M. SMYK	11/15/90	Sheet 2 of 8 size
		pppd	M. SMYK	11/15/90	A3
sheet	revision	FCI		type	Product Customer Drawing
index	sheet				



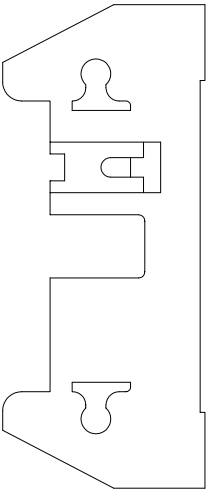
PRODUCT NUMBER
SEE TABLE



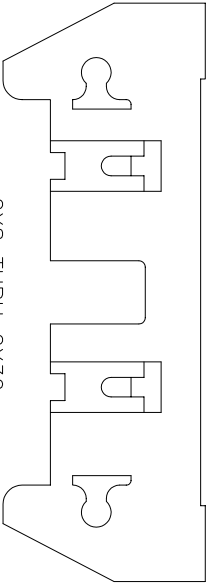
2X5
STYLE A



2X5
STYLE B



2X7
STYLE C



2X8 THRU 2X30
2X10 SHOWN
STYLE D

NOTES:

1. MOLDING MATERIAL: GLASS FILLED POLYESTER FLAME RETARDANT PER UL-94V-0. COLOR: BLUE
2. PIN MATERIAL: PHOS BRONZE
3. 1" MAX DRAFT PERMISSIBLE ON ALL SURFACES UNLESS OTHERWISE SPECIFIED.
4. LOGO LOCATED APPROX. AS SHOWN.
5. RECOMMENDED MOUNTING SCREW: #2-56 FILLISTER HD. MACH. SCREW 3/8 LG. FOR 1/16" AND 3/32" BOARD 7/16" LG. FOR 1/8" BOARD.
6. 4 LBS/2.3 KG MIN PIN RETENTION IN BOTH DIRECTIONS. (SEE TABLE)
7. HEADER WITH LOW PROFILE (LP) LATCHES (SEE TABLE) ARE DESIGNED TO BE USED WITH FEMALE CONNECTORS WITHOUT STRAIN RELIEF. HEADERS WITH (STD) LATCHES (SEE TABLE) ARE DESIGNED TO BE USED WITH FEMALE CONNECTORS WITH STRAIN RELIEF.
8. PLATING ON LEAD-IN PORTION OF PIN IS MANUFACTURING OPTION.
9. SPECIAL LATCH HEIGHT TO BE USED WITH CARD CONNECTOR APPLICATION.
10. RETENTION FEATURE AVAILABLE ON CONNECTORS WITH .105/2.67, .120/3.05, OR .150/3.81 TAIL LENGTH RETENTIVE P/N INCLUDES THE LETTER "R" AFTER THE EXISTING P/N.
EXAMPLE: 66207-xxx FOR EXISTING P/N
66207-xxxR FOR RETENTIVE P/N.
RETENTIVE FEATURE LOCATION - SEE TABLE
SEE SECTION R-R ON SH. 2.
11. ADD "L" SUFFIX AT THE END OF PART NUMBER FOR LEAD FREE.
12. THE HOUSING WILL WITHSTAND EXPOSURE TO 260°C PEAK TEMPERATURE FOR 15 SECONDS, IN A WAVE SOLDER APPLICATION WITH A 1.5mm MINIMUM THICK CIRCUIT BOARD. SEE APPLICATION NOTES/PROCEDURES IF THEY ARE AVAILABLE.
13. THIS PRODUCT MEETS EUROPEAN UNION DIRECTIVES AND OTHER COUNTRY REGULATION AS DESCRIBED IN GS-22-008.
14. PLATING OPTIONS:
MAY BE EITHER GOLD OR GXT PLATED AT MANUFACTURER'S OPTION.

mat'l. code	surface	tolerance	projection	product family
	ISO 1302	ISO 406		QKE. HDR.
		ISO 1101		
lit ecn no dr	tolerances unless otherwise specified			
P	angles	XXE10/XXL3	INCH/MM	title
	linecd	XXE10/XXL3	scale 2:1	QUICKIE HDR, STRIGHT
	0°±2°	XXXX000/XXXX061		3 WALL LATCH & EJECT
	dr	J. SHREINER		dwg no
		M. SMIK		66207
		M. SMYK		sheet 3 of 8 size
		M. SMYK		A3
		M. SMYK		type Product Customer Drawing
sheet	revision			
index	sheet			

PRODUCT NO NOTE 11	SIZE	DIM A	DIM B	DIM C	DIM D	DIM E	LATCHES NOTE 7	STYLE	PIN SHAPE	PIN PLATING (NOTE 14)
66207-001	2 X 5	1.330/33.78	.400/10.16	.720/18.29	.105/2.67	1.100/27.94	NO	A	RND	30µ"/0.76µ Au OR GXT OVER 50µ"/1.27µ NI
-002	2 X 7	1.530/38.86	.600/15.24	.920/23.37		1.300/33.02		C		
-003	2 X 8	1.630/41.40	.700/17.78	1.020/25.91		1.400/35.56		D		
-004	2 X 10	1.830/46.48	.900/22.86	1.220/30.99		1.600/40.64				
-005	2 X 13	2.130/54.10	1.200/30.48	1.520/38.61		1.900/48.26				
-006	2 X 17	2.530/64.26	1.600/40.64	1.920/48.77		2.300/58.42				
-007	2 X 20	2.830/71.88	1.900/48.26	2.220/56.39		2.600/66.04				
-008	2 X 25	3.330/84.58	2.400/60.96	2.720/69.09		3.100/78.74				
-009	2 X 30	3.830/97.28	2.900/73.66	3.220/81.79		3.600/91.44	NO	D		
-010	2 X 5	1.330/33.78	.400/10.16	.720/18.29		1.100/27.94	STD	A		
-011	2 X 7	1.530/38.86	.600/15.24	.920/23.37		1.300/33.02		C		
-012	2 X 8	1.630/41.40	.700/17.78	1.020/25.91		1.400/35.56		D		
-013	2 X 10	1.830/46.48	.900/22.86	1.220/30.99		1.600/40.64				
-014	2 X 13	2.130/54.10	1.200/30.48	1.520/38.61		1.900/48.26				
-015	2 X 17	2.530/64.26	1.600/40.64	1.920/48.77		2.300/58.42				
-016	2 X 20	2.830/71.88	1.900/48.26	2.220/56.39		2.600/66.04				
-017	2 X 25	3.330/84.58	2.400/60.96	2.720/69.09		3.100/78.74				
-018	2 X 30	3.830/97.28	2.900/73.66	3.220/81.79		3.600/91.44	STD	D		
-019	2 X 5	1.330/33.78	.400/10.16	.720/18.29		1.100/27.94	LP	A		
-020	2 X 7	1.530/38.86	.600/15.24	.920/23.37		1.300/33.02		C		
-021	2 X 8	1.630/41.40	.700/17.78	1.020/25.91		1.400/35.56		D		
-022	2 X 10	1.830/46.48	.900/22.86	1.220/30.99		1.600/40.64				
-023	2 X 13	2.130/54.10	1.200/30.48	1.520/38.61		1.900/48.26				
-024	2 X 17	2.530/64.26	1.600/40.64	1.920/48.77		2.300/58.42				
-025	2 X 20	2.830/71.88	1.900/48.26	2.220/56.39		2.600/66.04				
-026	2 X 25	3.330/84.58	2.400/60.96	2.720/69.09		3.100/78.74				
-027	2 X 30	3.830/97.28	2.900/73.66	3.220/81.79		3.600/91.44	LP	D		
-028	2 X 5	1.330/33.78	.400/10.16	.720/18.29		1.100/27.94	NO	B		
-029	2 X 5	1.330/33.78	.400/10.16	.720/18.29		1.100/27.94	STD	B		
-030	2 X 5	1.330/33.78	.400/10.16	.720/18.29	.105/2.67	1.100/27.94		B		
-031	2 X 5	1.330/33.78	.400/10.16	.720/18.29	.150/3.81	1.300/33.02	NO	A		
-032	2 X 7	1.530/38.86	.600/15.24	.920/23.37		1.400/35.56		C		
-033	2 X 8	1.630/41.40	.700/17.78	1.020/25.91		1.600/40.64		D		
-034	2 X 10	1.830/46.48	.900/22.86	1.220/30.99		1.900/48.26		D		
-035	2 X 13	2.130/54.10	1.200/30.48	1.520/38.61		2.300/58.42		D		
66207-036	2 X 17	2.530/64.26	1.600/40.64	1.920/48.77	.150/3.81	2.300/58.42	NO	D	RND	30µ"/0.76µ Au OR GXT OVER 50µ"/1.27µ NI

mat'l. code		surface		tolerance		projection		product family	
		ISO 1302		ISO 406		INCH/MM		QKE. HDR.	
lit ecn no dr		date		tolerances unless otherwise specified		scale 2:1		title	
P				0±.2"		3X.010/3X.013		QUICKIE HDR, STRIGHT	
				in eor		3X.010/3X.013		3 WALL LATCH & EJECT	
				dr		J. SHREINER 11/15/90		Sheet 4 of 8 size	
				enr		M. SMIK 11/15/90		66207	
				chr		M. SMYK 11/15/90		A3	
				pppd		M. SMYK 11/15/90		Product Customer Drawing	
sheet		revision							
index		sheet							

PRODUCT NO NOTE 11	SIZE	DIM A	DIM B	DIM C	DIM D	DIM E	LATCH NOTE 7	STYLE	PIN SHAPE	PIN PLATING (NOTE 14)
66207-037	2 X 20	2.830/71.88	1.900/48.26	2.220/56.39	.150/3.81	2.600/76.04	NO	D	RND	30u"/0.76u Au OR GXT OVER 50u"/1.27u Ni
-038	2 X 25	3.330/84.58	2.400/60.96	2.720/69.09		3.100/78.74	NO	D		
-039	2 X 30	3.830/97.28	2.900/73.66	3.220/81.79		3.600/91.44	NO	D		
-040	2 X 5	1.330/33.78	.400/10.16	.720/18.29		1.100/27.94	STD	A		
-041	2 X 7	1.530/38.86	.600/15.24	.920/23.37		1.300/33.02	STD	C		
-042	2 X 8	1.630/41.40	.700/17.78	1.020/25.91		1.400/35.56	STD	D		
-043	2 X 10	1.830/46.48	.900/22.86	1.220/30.99		1.600/40.64	STD	D		
-044	2 X 13	2.130/54.10	1.200/30.48	1.520/38.61		1.900/48.26	STD	D		
-046	2 X 20	2.830/71.88	1.900/48.26	2.220/56.39		2.600/76.04	STD	D		
-047	2 X 25	3.330/84.58	2.400/60.96	2.720/69.09		3.100/78.74	STD	D		
-048	2 X 30	3.830/97.28	2.900/73.66	3.220/81.79		3.600/91.44	STD	D		
-049	2 X 5	1.330/33.78	.400/10.16	.720/18.29		1.100/27.94	LP	A		
-050	2 X 7	1.530/38.86	.600/15.24	.920/23.37		1.300/33.02	LP	C		
-051	2 X 8	1.630/41.40	.700/17.78	1.020/25.91		1.400/35.56	LP	D		
-052	2 X 10	1.830/46.48	.900/22.86	1.220/30.99		1.600/40.64	LP	D		
-053	2 X 13	2.130/54.10	1.200/30.48	1.520/38.61		1.900/48.26	LP	D		
-054	2 X 17	2.530/64.26	1.600/40.64	1.920/48.77		2.300/58.42	LP	D		
-055	2 X 20	2.830/71.88	1.900/48.26	2.220/56.39		2.600/76.04	LP	D		
-056	2 X 25	3.330/84.58	2.400/60.96	2.720/69.09		3.100/78.74	LP	D		
-057	2 X 30	3.830/97.28	2.900/73.66	3.220/81.79		3.600/91.44	LP	D		
-058	2 X 5	1.330/33.78	.400/10.16	.720/18.29		1.100/27.94	NO	B		
-059	2 X 5	1.330/33.78	.400/10.16	.720/18.29		1.100/27.94	NO	B		
-060	2 X 5	1.330/33.78	.400/10.16	.720/18.29		1.100/27.94	STD	B		
-061	2 X 5	1.330/33.78	.400/10.16	.720/18.29		1.100/27.94	LP	B		
-062	2 X 7	1.530/38.86	.600/15.24	.920/23.37		1.300/33.02	LP	A		
-063	2 X 8	1.630/41.40	.700/17.78	1.020/25.91		1.400/35.56	LP	C		
-064	2 X 10	1.830/46.48	.900/22.86	1.220/30.99		1.600/40.64	LP	D		
-065	2 X 13	2.130/54.10	1.200/30.48	1.520/38.61		1.900/48.26	LP	D		
-066	2 X 17	2.530/64.26	1.600/40.64	1.920/48.77		2.300/58.42	LP	D		
-067	2 X 20	2.830/71.88	1.900/48.26	2.220/56.39		2.600/76.04	LP	D		
-068	2 X 25	3.330/84.58	2.400/60.96	2.720/69.09		3.100/78.74	LP	D		
-069	2 X 30	3.830/97.28	2.900/73.66	3.220/81.79		3.600/91.44	LP	D		
-070	2 X 5	1.330/33.78	.400/10.16	.720/18.29		1.100/27.94	STD	A		
-071	2 X 7	1.530/38.86	.600/15.24	.920/23.37		1.300/33.02	STD	C		
66207-072	2 X 8	1.630/41.40	.700/17.78	1.020/25.91	.675/17.15	1.400/35.56	STD	D	SQ	30u"/0.76u Au OR GXT OVER 50u"/1.27u Ni

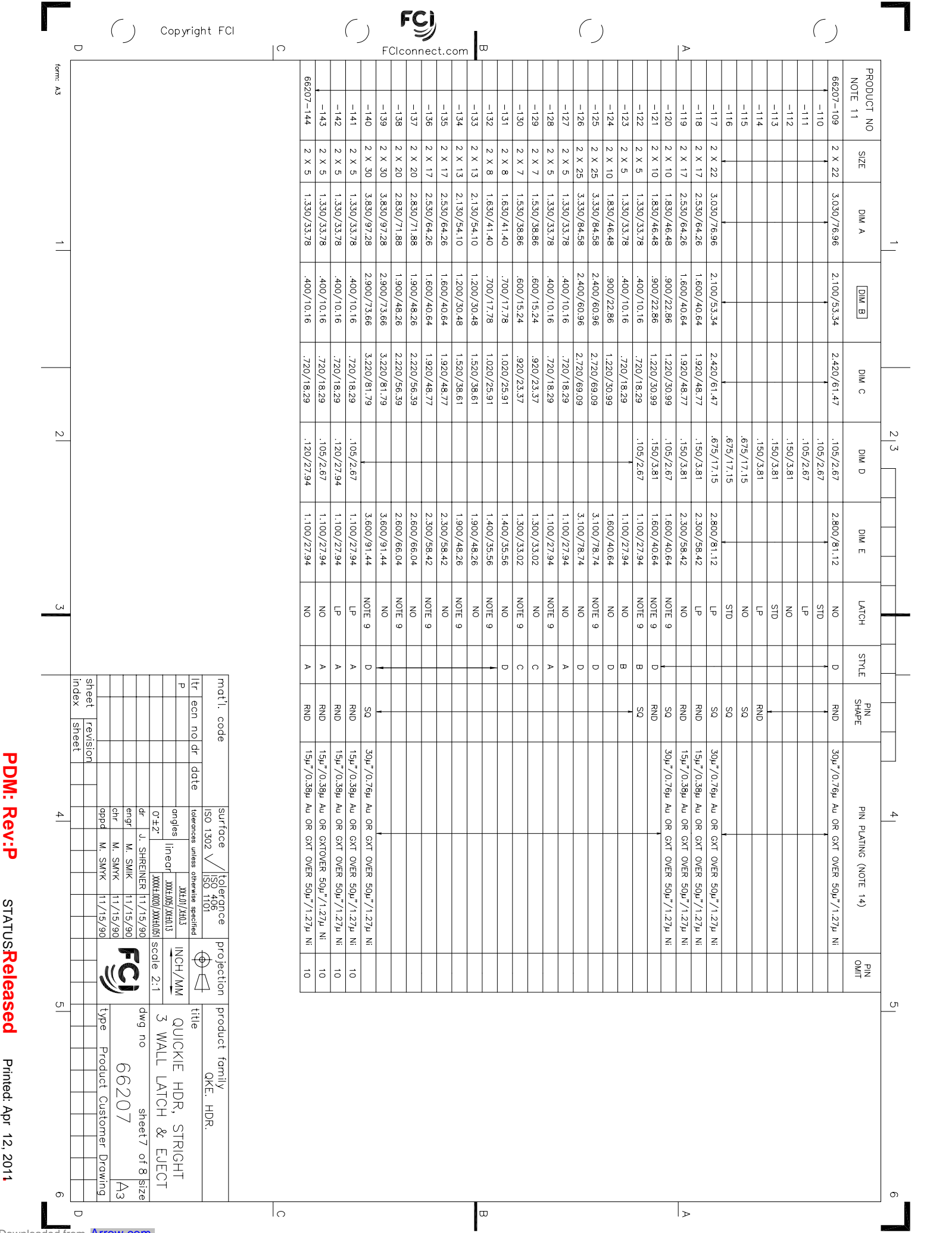
mat'l. code		surface		tolerance		projection		product family	
ISO 1302		ISO 406		ISO 1101		INCH/MM		QKE. HDR.	
date		tolerances unless otherwise specified		scale 2:1		title		QUICKIE HDR, STRIGHT	
0*±2"		XXX-000/XXX-001		XXX-000/XXX-001		3 WALL LATCH & EJECT		Sheet 5 of 8 size	
dr U. SHREINER 11/15/90		engr M. SMIK 11/15/90		chr M. SMYK 11/15/90		pppd M. SMWK 11/15/90		66207	
sheet revision		sheet		sheet		sheet		sheet	
index		index		index		index		index	

PRODUCT NO NOTE 11	SIZE	DIM A	DIM B	DIM C	DIM D	DIM E	LATCH NOTE 7	STYLE	PIN SHAPE	PIN PLATING (NOTE 14)
66207-073	2 X 10	1.830/46.48	.900/22.86	1.220/30.99	.675/17.15	1.800/46.64	STD	D	SQ	30µ"/0.76µ Au OR CXT OVER 50µ"/1.27µ Ni
-074	2 X 13	2.130/54.10	1.200/30.48	1.520/38.61		1.900/48.26		D		
-075	2 X 17	2.530/64.26	1.600/40.64	1.920/48.77		2.300/58.42		D		
-076	2 X 20	2.830/71.88	1.900/48.26	2.220/56.39		2.600/76.04		D		
-077	2 X 25	3.330/84.58	2.400/60.96	2.720/69.09		3.100/78.74		D		
-078	2 X 30	3.830/97.28	2.900/73.66	3.220/81.79		3.600/91.44		D		
-079	2 X 5	1.330/33.78	.400/10.16	.720/18.29		1.100/27.94	LP	A		
-080	2 X 7	1.530/38.86	.600/15.24	.920/23.37		1.300/33.02		C		
-081	2 X 8	1.630/41.40	.700/17.78	1.020/25.91		1.400/35.56		D		
-082	2 X 10	1.830/46.48	.900/22.86	1.220/30.99		1.600/40.64		D		
-083	2 X 13	2.130/54.10	1.200/30.48	1.520/38.61		1.900/48.26		D		
-084	2 X 17	2.530/64.26	1.600/40.64	1.920/48.77		2.300/58.42		D		
-085	2 X 20	2.830/71.88	1.900/48.26	2.220/56.39		2.600/76.04		D		
-086	2 X 25	3.330/84.58	2.400/60.96	2.720/69.09		3.100/78.74		D		
-087	2 X 30	3.830/97.28	2.900/73.66	3.220/81.79		3.600/91.44	LP	D		
-088	2 X 5	1.330/33.78	.400/10.16	.720/18.29		1.100/27.94	NO	B		
-089	2 X 5	1.330/33.78	.400/10.16	.720/18.29		1.100/27.94	STD	B		
-090	2 X 5	1.330/33.78	.400/10.16	.720/18.29		1.100/27.94	LP	B		
-091	2 X 12	2.030/45.56	1.100/27.94	1.420/36.07		1.800/45.72	NO	D	RND	
-092							STD			
-093							LP			
-094							NO			
-095							STD			
-096							LP		RND	
-097							NO		SQ	
-098							STD		SQ	
-099	2 X 12	2.030/45.56	1.100/27.94	1.420/36.07		1.800/45.72	LP		SQ	
-100	2 X 15	2.330/59.18	1.400/35.56	1.720/43.69		2.100/53.34	NO		RND	
-101							STD			
-102							LP			
-103							NO			
-104							STD			
-105							LP		RND	
-106							NO		SQ	
-107							STD		SQ	
66207-108	2 X 15	2.330/59.18	1.400/35.56	1.720/43.69		2.100/53.34	LP	D	SQ	30µ"/0.76µ Au OR CXT OVER 50µ"/1.27µ Ni

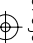
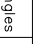
mat'l. code		surface		tolerance		projection		product family	
ISO 1302		ISO 406		ISO 1101		INCH/MM		QKE. HDR.	
ISO 1302		ISO 1101		ISO 1101		scale 2:1		QUICKIE HDR, STRIGHT	
ISO 1302		ISO 1101		ISO 1101		scale 2:1		3 WALL LATCH & EJECT	
ISO 1302		ISO 1101		ISO 1101		scale 2:1		Sheet 6 of 8 size	
ISO 1302		ISO 1101		ISO 1101		scale 2:1		66207	
ISO 1302		ISO 1101		ISO 1101		scale 2:1		A3	
ISO 1302		ISO 1101		ISO 1101		scale 2:1		Product Customer Drawing	
ISO 1302		ISO 1101		ISO 1101		scale 2:1		Type	
ISO 1302		ISO 1101		ISO 1101		scale 2:1		Revision	
ISO 1302		ISO 1101		ISO 1101		scale 2:1		Index	
ISO 1302		ISO 1101		ISO 1101		scale 2:1		Sheet	
ISO 1302		ISO 1101		ISO 1101		scale 2:1		Revision	
ISO 1302		ISO 1101		ISO 1101		scale 2:1		Index	
ISO 1302		ISO 1101		ISO 1101		scale 2:1		Sheet	
ISO 1302		ISO 1101		ISO 1101		scale 2:1		Revision	
ISO 1302		ISO 1101		ISO 1101		scale 2:1		Index	
ISO 1302		ISO 1101		ISO 1101		scale 2:1		Sheet	
ISO 1302		ISO 1101		ISO 1101		scale 2:1		Revision	
ISO 1302		ISO 1101		ISO 1101		scale 2:1		Index	
ISO 1302		ISO 1101		ISO 1101		scale 2:1		Sheet	
ISO 1302		ISO 1101		ISO 1101		scale 2:1		Revision	
ISO 1302		ISO 1101		ISO 1101		scale 2:1		Index	
ISO 1302		ISO 1101		ISO 1101		scale 2:1		Sheet	
ISO 1302		ISO 1101		ISO 1101		scale 2:1		Revision	
ISO 1302		ISO 1101		ISO 1101		scale 2:1		Index	
ISO 1302		ISO 1101		ISO 1101		scale 2:1		Sheet	
ISO 1302		ISO 1101		ISO 1101		scale 2:1		Revision	
ISO 1302		ISO 1101		ISO 1101		scale 2:1		Index	
ISO 1302		ISO 1101		ISO 1101		scale 2:1		Sheet	
ISO 1302		ISO 1101		ISO 1101		scale 2:1		Revision	
ISO 1302		ISO 1101		ISO 1101		scale 2:1		Index	
ISO 1302		ISO 1101		ISO 1101		scale 2:1		Sheet	
ISO 1302		ISO 1101		ISO 1101		scale 2:1		Revision	
ISO 1302		ISO 1101		ISO 1101		scale 2:1		Index	
ISO 1302		ISO 1101		ISO 1101		scale 2:1		Sheet	
ISO 1302		ISO 1101		ISO 1101		scale 2:1		Revision	
ISO 1302		ISO 1101		ISO 1101		scale 2:1		Index	
ISO 1302		ISO 1101		ISO 1101		scale 2:1		Sheet	
ISO 1302		ISO 1101		ISO 1101		scale 2:1		Revision	
ISO 1302		ISO 1101		ISO 1101		scale 2:1		Index	
ISO 1302		ISO 1101		ISO 1101		scale 2:1		Sheet	
ISO 1302		ISO 1101		ISO 1101		scale 2:1		Revision	
ISO 1302		ISO 1101		ISO 1101		scale 2:1		Index	
ISO 1302		ISO 1101		ISO 1101		scale 2:1		Sheet	
ISO 1302		ISO 1101		ISO 1101		scale 2:1		Revision	
ISO 1302		ISO 1101		ISO 1101		scale 2:1		Index	
ISO 1302		ISO 1101		ISO 1101		scale 2:1		Sheet	
ISO 1302		ISO 1101		ISO 1101		scale 2:1		Revision	
ISO 1302		ISO 1101		ISO 1101		scale 2:1		Index	
ISO 1302		ISO 1101		ISO 1101		scale 2:1		Sheet	
ISO 1302		ISO 1101		ISO 1101		scale 2:1		Revision	
ISO 1302		ISO 1101		ISO 1101		scale 2:1		Index	
ISO 1302		ISO 1101		ISO 1101		scale 2:1		Sheet	
ISO 1302		ISO 1101		ISO 1101		scale 2:1		Revision	
ISO 1302		ISO 1101		ISO 1101		scale 2:1		Index	
ISO 1302		ISO 1101		ISO 1101		scale 2:1		Sheet	
ISO 1302		ISO 1101		ISO 1101		scale 2:1		Revision	
ISO 1302		ISO 1101		ISO 1101		scale 2:1		Index	
ISO 1302		ISO 1101		ISO 1101		scale 2:1		Sheet	
ISO 1302		ISO 1101		ISO 1101		scale 2:1		Revision	
ISO 1302		ISO 1101		ISO 1101		scale 2:1		Index	
ISO 1302		ISO 1101		ISO 1101		scale 2:1		Sheet	
ISO 1302		ISO 1101		ISO 1101		scale 2:1		Revision	
ISO 1302		ISO 1101		ISO 1101		scale 2:1		Index	
ISO 1302		ISO 1101		ISO 1101		scale 2:1		Sheet	
ISO 1302		ISO 1101		ISO 1101		scale 2:1		Revision	
ISO 1302		ISO 1101		ISO 1101		scale 2:1		Index	
ISO 1302		ISO 1101		ISO 1101		scale 2:1		Sheet	
ISO 1302		ISO 1101		ISO 1101		scale 2:1		Revision	
ISO 1302		ISO 1101		ISO 1101		scale 2:1		Index	
ISO 1302		ISO 1101		ISO 1101		scale 2:1		Sheet	
ISO 1302		ISO 1101		ISO 1101		scale 2:1		Revision	
ISO 1302		ISO 1101		ISO 1101		scale 2:1		Index	
ISO 1302		ISO 1101		ISO 1101		scale 2:1		Sheet	
ISO 1302		ISO 1101		ISO 1101		scale 2:1		Revision	
ISO 1302		ISO 1101		ISO 1101		scale 2:1		Index	
ISO 1302		ISO 1101		ISO 1101		scale 2:1		Sheet	
ISO 1302		ISO 1101		ISO 1101		scale 2:1		Revision	
ISO 1302		ISO 1101		ISO 1101		scale 2:1		Index	
ISO 1302		ISO 1101		ISO 1101		scale 2:1		Sheet	
ISO 1302		ISO 1101		ISO 1101		scale 2:1		Revision	
ISO 1302		ISO 1101		ISO 1101		scale 2:1		Index	
ISO 1302		ISO 1101		ISO 1101		scale 2:1		Sheet	
ISO 1302		ISO 1101		ISO 1101		scale 2:1		Revision	
ISO 1302		ISO 1101		ISO 1101		scale 2:1		Index	
ISO 1302		ISO 1101		ISO 1101		scale 2:1		Sheet	
ISO 1302		ISO 1101		ISO 1101		scale 2:1		Revision	
ISO 1302		ISO 1101		ISO 1101		scale 2:1		Index	
ISO 1302		ISO 1101		ISO 1101		scale 2:1		Sheet	
ISO 1302		ISO 1101		ISO 1101		scale 2:1		Revision	
ISO 1302		ISO 1101		ISO 1101		scale 2:1		Index	
ISO 1302		ISO 1101		ISO 1101		scale 2:1		Sheet	
ISO 1302		ISO 1101		ISO 1101		scale 2:1		Revision	
ISO 1302		ISO 1101		ISO 1101		scale 2:1		Index	
ISO 1302		ISO 1101		ISO 1101		scale 2:1		Sheet	
ISO 1302		ISO 1101		ISO 1101		scale 2:1		Revision	
ISO 1302		ISO 1101		ISO 1101		scale 2:1		Index	
ISO 1302		ISO 1101		ISO 1101		scale 2:1		Sheet	
ISO 1302		ISO 1101		ISO 1101		scale 2:1		Revision	
ISO 1302		ISO 1101		ISO 1101		scale 2:1		Index	
ISO 1302		ISO 1101		ISO 1101		scale 2:1		Sheet	
ISO 1302		ISO 1101		ISO 1101		scale 2:1		Revision	
ISO 1302		ISO 1101		ISO 1101		scale 2:1		Index	
ISO 1302		ISO 1101		ISO 1101		scale 2:1		Sheet	
ISO 1302		ISO 1101		ISO 1101		scale 2:1		Revision	
ISO 1302		ISO 1101		ISO 1101		scale 2:1		Index	
ISO 1302		ISO 1101		ISO 1101		scale 2:1		Sheet	
ISO 1302		ISO 1101		ISO 1101		scale 2:1		Revision	
ISO 1302		ISO 1101		ISO 1101		scale 2:1		Index	
ISO 1302		ISO 1101		ISO 1101		scale 2:1			

PRODUCT NO NOTE 11	SIZE	DIM A	DIM B	DIM C	DIM D	DIM E	LATCH	STYLE	PIN SHAPE	PIN PLATING (NOTE 14)	PIN OMIT
66207-109	2 X 22	3.030/76.96	2.100/53.34	2.420/61.47	.105/2.67	2.800/81.12	NO	D	RND	30µ"/0.76µ Au OR GXT OVER 50µ"/1.27µ Ni	
-110					.105/2.67		STD				
-111					.105/2.67		LP				
-112					.150/3.81		NO				
-113					.150/3.81		STD				
-114					.150/3.81		LP		RND		
-115					.675/17.15		NO		SQ		
-116					.675/17.15		STD		SQ		
-117	2 X 22	3.030/76.96	2.100/53.34	2.420/61.47	.675/17.15	2.800/81.12	LP		SQ	30µ"/0.76µ Au OR GXT OVER 50µ"/1.27µ Ni	
-118	2 X 17	2.530/64.26	1.600/40.64	1.920/48.77	.150/3.81	2.300/58.42	LP		RND	15µ"/0.38µ Au OR GXT OVER 50µ"/1.27µ Ni	
-119	2 X 17	2.530/64.26	1.600/40.64	1.920/48.77	.150/3.81	2.300/58.42	NO		RND	15µ"/0.38µ Au OR GXT OVER 50µ"/1.27µ Ni	
-120	2 X 10	1.830/46.48	.900/22.86	1.220/30.99	.105/2.67	1.600/40.64	NOTE 9	D	SQ	30µ"/0.76µ Au OR GXT OVER 50µ"/1.27µ Ni	
-121	2 X 10	1.830/46.48	.900/22.86	1.220/30.99	.150/3.81	1.600/40.64	NOTE 9	D	RND		
-122	2 X 5	1.330/33.78	.400/10.16	.720/18.29	.105/2.67	1.100/27.94	NOTE 9	B	SQ		
-123	2 X 5	1.330/33.78	.400/10.16	.720/18.29		1.100/27.94	NO	B			
-124	2 X 10	1.830/46.48	.900/22.86	1.220/30.99		1.600/40.64	NO	D			
-125	2 X 25	3.330/84.58	2.400/60.96	2.720/69.09		3.100/78.74	NOTE 9	D			
-126	2 X 25	3.330/84.58	2.400/60.96	2.720/69.09		3.100/78.74	NO	D			
-127	2 X 5	1.330/33.78	.400/10.16	.720/18.29		1.100/27.94	NO	A			
-128	2 X 5	1.330/33.78	.400/10.16	.720/18.29		1.100/27.94	NOTE 9	A			
-129	2 X 7	1.530/38.86	.600/15.24	.920/23.37		1.300/33.02	NO	C			
-130	2 X 7	1.530/38.86	.600/15.24	.920/23.37		1.300/33.02	NOTE 9	C			
-131	2 X 8	1.630/41.40	.700/17.78	1.020/25.91		1.400/35.56	NO	D			
-132	2 X 8	1.630/41.40	.700/17.78	1.020/25.91		1.400/35.56	NOTE 9	D			
-133	2 X 13	2.130/54.10	1.200/30.48	1.520/38.61		1.900/48.26	NO				
-134	2 X 13	2.130/54.10	1.200/30.48	1.520/38.61		1.900/48.26	NOTE 9				
-135	2 X 17	2.530/64.26	1.600/40.64	1.920/48.77		2.300/58.42	NO				
-136	2 X 17	2.530/64.26	1.600/40.64	1.920/48.77		2.300/58.42	NOTE 9				
-137	2 X 20	2.830/71.88	1.900/48.26	2.220/56.39		2.600/66.04	NO				
-138	2 X 20	2.830/71.88	1.900/48.26	2.220/56.39		2.600/66.04	NOTE 9				
-139	2 X 30	3.830/97.28	2.900/73.66	3.220/81.79		3.600/91.44	NO				
-140	2 X 30	3.830/97.28	2.900/73.66	3.220/81.79		3.600/91.44	NOTE 9	D	SQ	30µ"/0.76µ Au OR GXT OVER 50µ"/1.27µ Ni	
-141	2 X 5	1.330/33.78	.400/10.16	.720/18.29	.105/2.67	1.100/27.94	LP	A	RND	15µ"/0.38µ Au OR GXT OVER 50µ"/1.27µ Ni	10
-142	2 X 5	1.330/33.78	.400/10.16	.720/18.29	.120/27.94	1.100/27.94	LP	A	RND	15µ"/0.38µ Au OR GXT OVER 50µ"/1.27µ Ni	10
-143	2 X 5	1.330/33.78	.400/10.16	.720/18.29	.105/2.67	1.100/27.94	NO	A	RND	15µ"/0.38µ Au OR GXT OVER 50µ"/1.27µ Ni	10
66207-144	2 X 5	1.330/33.78	.400/10.16	.720/18.29	.120/27.94	1.100/27.94	NO	A	RND	15µ"/0.38µ Au OR GXT OVER 50µ"/1.27µ Ni	10

mat'l. code		surface		tolerance		projection		product family	
		ISO 1302		ISO 406		INCH/MM		QKE. HDR.	
title		tolerances unless otherwise specified		ISO 1101		scale 2:1		QUICKIE HDR, STRIGHT	
3 WALL LATCH & EJECT		XXXL005/XXXL13		XXXL002/XXXL061				Sheet 7 of 8 size	
66207		XXXL005/XXXL13		XXXL002/XXXL061				A3	
sheet revision		engr M. SMIK 11/15/90		chr M. SMYK 11/15/90		pppd M. SMYK 11/15/90		type Product Customer Drawing	
sheet index									



PRODUCT NO	SIZE	DIM A	DIM B	DIM C	DIM D	DIM E	LATCH	STYLE	PIN SHAPE	PIN PLATING (NOTE 14)	PIN OMIT
66207-145 NOTE 11	2 X 5	1.330/33.78	.400/10.16	.720/18.29	.120/27.94	1.100/27.94	NOTE 9	A	RND	15u"/0.38u Au OR GXT OVER 50u"/1.27u Ni	10
66207-146	2 X 30	3.830/97.28	2.900/73.66	3.220/81.79	.150/3.81	3.600/91.44	NOTE 9	D	RND	30u"/0.76u Au OR GXT OVER 50u"/1.27u Ni	-

mat'l. code		surface		tolerance		projection		product family	
ISO 1302		ISO 406		ISO 1101		 INCH/MM scale 2:1		QKE. HDR.	
itr	ecn no	dr	date	tolerances unless otherwise specified				title	
P				angles	infeed	JHE10/JHE13		QUICKIE HDR, STRIGHT	
				0°±2'	JHE10/JHE13			3 WALL LATCH & EJECT	
					JHE10/JHE13			dwg no	
					JHE10/JHE13			66207	
					JHE10/JHE13			sheet 8 of 8 size	
					JHE10/JHE13			A3	
					JHE10/JHE13			type	
					JHE10/JHE13			Product Customer Drawing	
					JHE10/JHE13			sheet	
					JHE10/JHE13			revision	
					JHE10/JHE13			index	