



# Interchangeable Line Lens

## 8° Fan Angle

## Product Overview

The 8° line lens from Global Laser is designed to be a simple interchangeable optic that can be screwed on and off the front of any of our M9 threaded laser modules with a suitable collimator (see table below). This allows the user to quickly and efficiently change a dot output laser module to a 8° line which is suitable for a wide range of applications including alignment, positioning and machine vision. The cross lens consists of a glass lens element fitted within an 11mm diameter lens holder.

The optic produces a line with gaussian distribution in both axis. The results in a line with high intensity levels in the centre of the line. The downside is that power levels decrease towards the ends of the line. However it is capable of producing fine lines widths and providing a cost effective solution.

| Global Laser Part Number | RS Part Number | Description                       |
|--------------------------|----------------|-----------------------------------|
| 1951-01-000              | RS697-3513     | Red Laser Alignment Kit           |
| 1956-01-000              | RS127-1568     | Gated Cameo Laser Development Kit |
| 3117-12-000              | RS127-1572     | LaserLyte-Flex 635nm 1mW Dot      |
| 3117-10-000              | RS697-3557     | LaserLyte Flex 635nm 5mW Dot      |
| 3117-11-000              | RS127-1571     | LaserLyte-Flex 635nm 10mW Dot     |
| 3118-03-000              | TBC            | LaserLyte-Flex 515nm 1mW Dot      |
| 3118-04-000              | TBC            | LaserLyte-Flex 515nm 5mW Dot      |
| 3118-05-000              | TBC            | LaserLyte-Flex 515nm 10mW Dot     |
| 1266-26-000              | TBC            | Gated Cameo 635nm 0.8mW A Lens    |
| 1266-27-000              | TBC            | Gated Cameo 635nm 2.8mW A Lens    |

## Specification

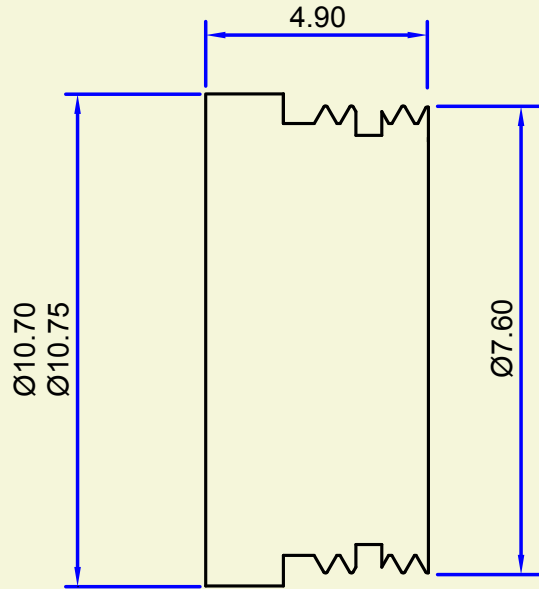
|                                   | Optical Information      |
|-----------------------------------|--------------------------|
| Lens Material                     | Glass                    |
| Lens Type                         | Plano Convex Cylindrical |
| Exit Aperture                     | 5.5mm                    |
| A/R Coated                        | Yes (MgF2)               |
| Typical Input Beam Size           | 5 by 1.5mm               |
| Typical Fan Angle                 | 8°                       |
| Typical Transmission Loss (650nm) | ≤5%                      |



# Interchangeable Line Lens 8° Fan Angle

## Mechanical Dimensions

Interchangeable Line Lens (8° Fan Angle)



**Please Note:** Global Laser reserve the right to change descriptions and specifications without notice.



T: +44 (0)1495 212213  
F: +44 (0)1495 214004  
E: [sales@globallasertech.com](mailto:sales@globallasertech.com)  
[www.globallasertech.com](http://www.globallasertech.com)

Global Laser Ltd  
Unit 9-10  
Roseheyworth Business Park  
Abertillery, Gwent NP13 1SP UK