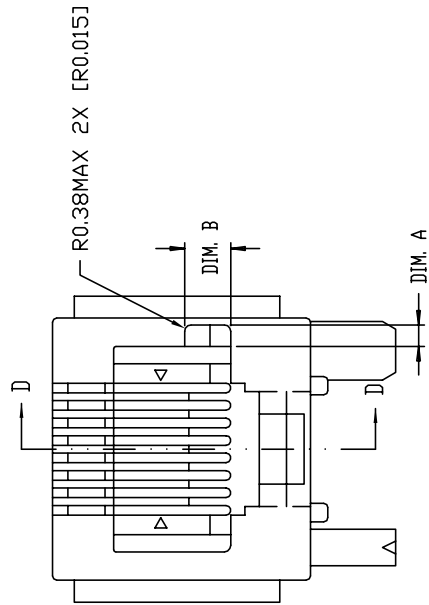
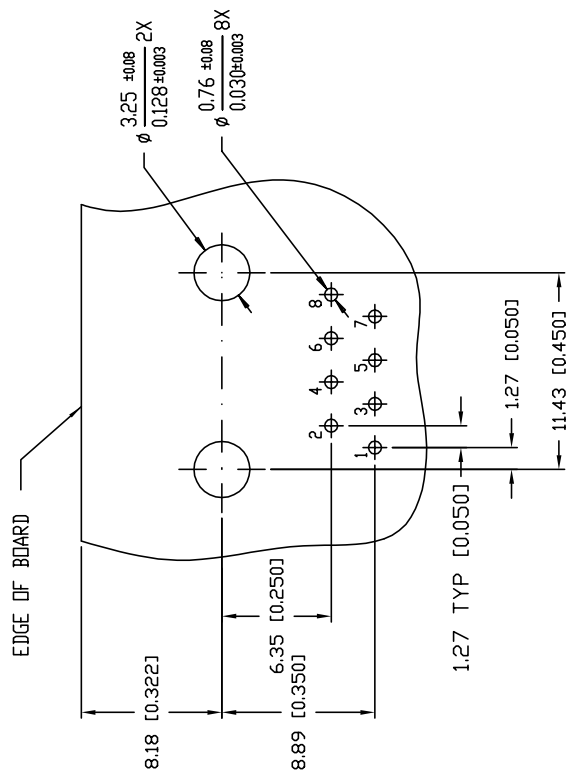
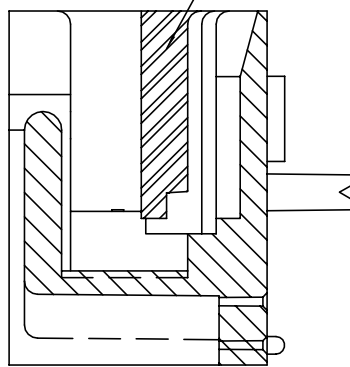


mat'l. code		surface	tolerance	projection	product family
tr	re	ISO1302	ISO1101	ISO1406	MOD JACK
T	ECR 500022 BC LH	26JAN.00	0.XX±0.3	mm	8 POS HORIZONTAL
U	ECR V10424	12FEB.01	0.XX±0.15	scale 2.0	P.C.B. MOD JACK ASSY
V	N05-0002	06JAN.01	0.XXX±0.05		awg no
W	N08-0074	30APR.08	JANET	15JUN.98	sheet 1 of 3
X	ELX-H-010667	13MAR.12	JANET	15JUN.98	size
			M CHENG	19FEB.01	A4
			M CHENG	19FEB.01	type
sheet	revision	X	X		Product
index	Sheet	1	2	3	Customer Drawing

RECOMMENDED BOARD LAYOUT
VIEWED FROM TOP

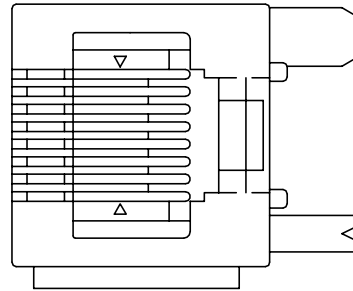


KEYED STYLE



SECTION D-D

LEFT EAR MOUNTING



NOTE :

- 1 THIS PRODUCT MEETS EUROPEAN UNION DIRECTIVES AND OTHER COUNTRY REGULATIONS AS DESCRIBED IN GS-22-008.
- 2 THE HOUSING WILL WITHSTAND EXPOSURE TO 260°C PEAK TEMPERATURE FOR 10 SECONDS IN A WAVE SOLDER APPLICATION WITH A 1.60mm MINIMUM THICK CIRCUIT BOARD.
- 3 IF LF P/N PACKAGING MEETS GS-14-920 SPECIFICATION.

mat'l. code	surface	tolerance	projection	product family
ISQ1302	ISQ1011	ISQ1046	ISQ1046	MOD JACK
ltr/ecn nodr	date	tolerances unless otherwise specified	mm	mm
T	ECR 500022 BC LH 26JAN.00	0.X±0.3	0.XX±0.15	8 POS HORIZONTAL
U	ECR V10424 12FEB.01	0.XXX±0.05	scale 2.0	P.C.B. MOD JACK ASSY
V	N05-0002 YS 06JAN.01			awg no sheet 2 of 3 size
W	N08-0074 SH MM 30APR.08	JANET 15JUN.98		68899
X	ELX-N-010667 SH MM 13MAR.12	JANET 15JUN.98		A4
sheet revision	chr	appd	type	Product Customer Drawing
index	Sheet			

PRODUCT NO.	DIM. A	DIM. B	STYLE	POSITIONS LOADED	CONTACT PLATING	HOUSING COLOR	MOUNTING EARS	REMARKS	mat'l. code		surface		tolerance		projection		product family	
									tr	ec	tr	ec	tr	ec	tr	ec	tr	ec
68899-001-001LF	-	-	UNKEYED	ALL	0.76um /30*u GXT	BLACK	YES	-	ISO1302	ISO1101	ISO1406	0.X±0.3	mm	MOD JACK				
-002	1.25 /0.050	2.69 /0.106	KEYED	ALL	5u" Au + high performance lubricant	BLACK	YES	-	date	26JAN.00	angle	0.XX±0.15	scale 2.0	8 POS HORIZONTAL		P.C.B. MOD JACK ASSY		
-003	-	-	UNKEYED	2,3,4,5,6,7	5u" Au + high performance lubricant	BLACK	YES	-	date	12FEB.01	0°±2'	0.XXX±0.05		awg no		sheet 3 of 3 size		
-004	-	-	UNKEYED	ALL	5u" Au + high performance lubricant	BLACK	NO	-	date	06JAN.01				15JUN.98		A4		
-004LF	-	-	UNKEYED	ALL	5u" Au + high performance lubricant	RED	NO	-	date	30APR.08	chr	JANET	15JUN.98	15JUN.98		68899		
-004RLF	-	-	UNKEYED	ALL	5u" Au + high performance lubricant	GREEN	NO	-	date	13MAR.12	engr	JANET	19FEB.01	19FEB.01		Product Customer Drawing		
-005	-	-	UNKEYED	ALL	5u" Au + high performance lubricant	GRAY	NO	-	date		chr	M CHENG						
-005LF	-	-	UNKEYED	ALL	5u" Au + high performance lubricant	BLACK	YES	-	date		appr	M CHENG						
-006	-	-	UNKEYED	ALL	5u" Au + high performance lubricant	BLACK	NO	-	date									
-006LF	-	-	UNKEYED	ALL	5u" Au + high performance lubricant	BLACK	NO	-	date									
-007	1.25 /0.050	2.69 /0.106	KEYED	ALL	5u" Au + high performance lubricant	BLACK	NO	-	date									
-007LF	-	-	UNKEYED	ALL	5u" Au + high performance lubricant	BLACK	LEFT ONLY	-	date									
-008	-	-	UNKEYED	ALL	5u" Au + high performance lubricant	BLACK	RIGHT ONLY	-	date									
-008LF	-	-	UNKEYED	ALL	1.27um /50*u GXT	BLACK	YES	-	date									
-009	-	-	UNKEYED	ALL	5u" Au + high performance lubricant	BLACK	YES	-	date									
-009LF	-	-	UNKEYED	1,4,5,8	5u" Au + high performance lubricant	BLACK	YES	-	date									
-010	-	-	UNKEYED	ALL	5u" Au + high performance lubricant	BLACK	NO	-	date									
-010LF	-	-	UNKEYED	ALL	5u" Au + high performance lubricant	BLACK	NO	-	date									
-011	-	-	UNKEYED	ALL	5u" Au + high performance lubricant	BLACK	NO	-	date									
-011LF	-	-	UNKEYED	ALL	5u" Au + high performance lubricant	BLACK	NO	-	date									
-012	-	-	UNKEYED	ALL	5u" Au + high performance lubricant	BLACK	NO	-	date									
-012LF	-	-	UNKEYED	ALL	5u" Au + high performance lubricant	BLACK	NO	-	date									
-013	-	-	UNKEYED	ALL	1.27um /50*u GXT	BLACK	NO	-	date									
-013LF	-	-	UNKEYED	ALL	5u" Au + high performance lubricant	BLACK	NO	-	date									
-014	1.25 /0.050	2.69 /0.106	KEYED	ALL	5u" Au + high performance lubricant	BLACK	NO	-	date									
-014LF	-	-	KEYED	ALL	1.27um /50*u GXT	BLACK	NO	-	date									
-015	1.25 /0.050	2.69 /0.106	KEYED	ALL	1.27um /50*u GXT	BLACK	NO	-	date									
-015LF	-	-	KEYED	ALL	1.27um /50*u GXT	BLACK	NO	-	date									

LEAD FREE PRODUCT NO.