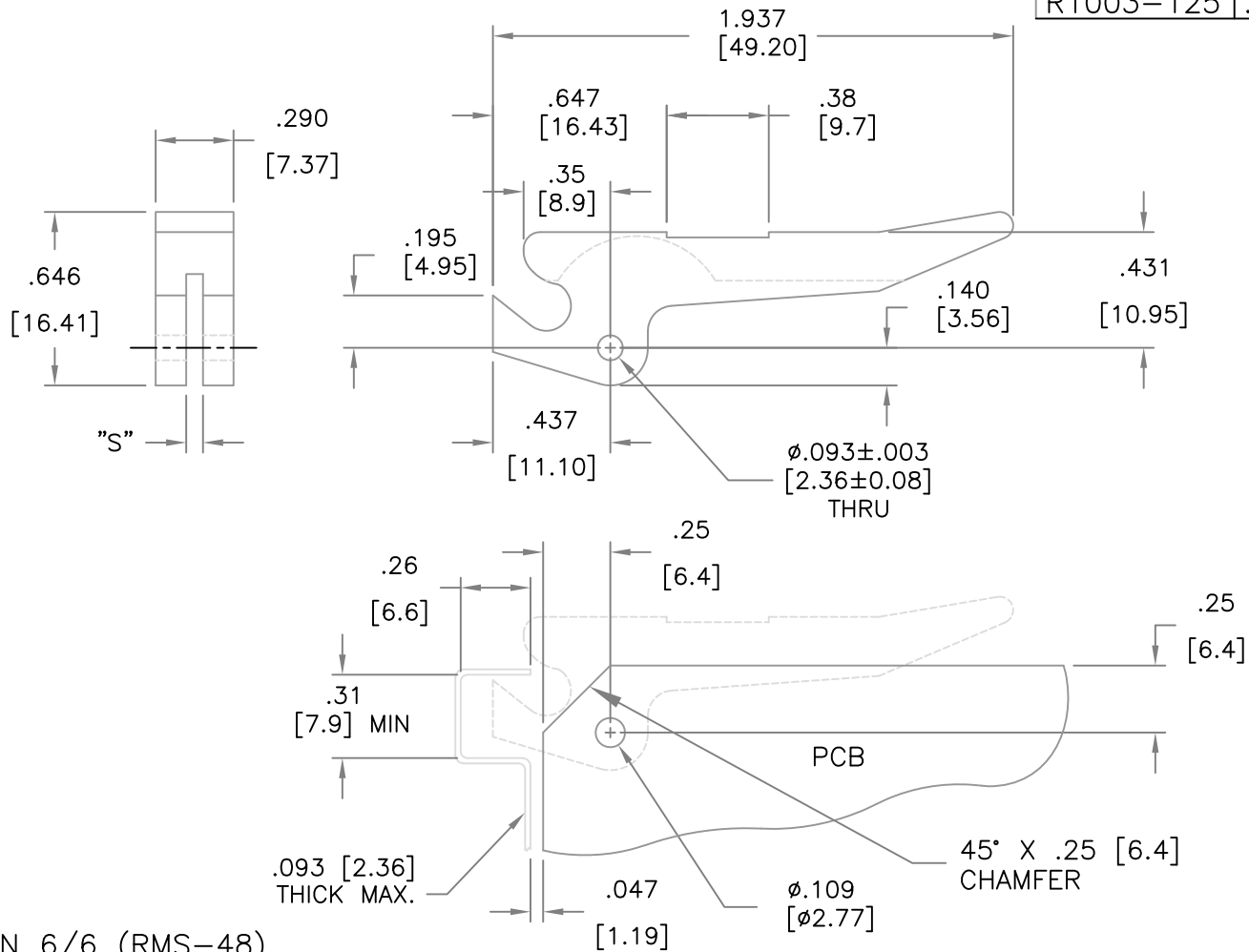


PART NO.	"S"	PCB THICKNESS
R1001-062	.075 (1.9)	.062 (1.6)
R1002-093	.100 (2.5)	.093 (2.4)
R1003-125	.140 (3.6)	.125 (3.2)

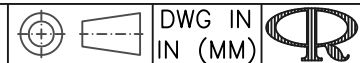


NOTES:

- MAT'L: NYLON 6/6 (RMS-48)
COLOR: NATURAL

H	SEE CO 200309 FOR CHANGES	SK 01.16.09
G	SEE CO 200106 FOR CHANGES	SK 01.15.08
F	SEE ECN #933 FOR CHANGES	SK 02.02.05
E	ADDED ".35" DIM.; ADDED THICKNESS NOTE CHANGED "PANEL" TO "PCB" IN TABLE	SJ 01.18.02
D	CHANGED FILE NO. AND TITLE BLOCK	SM 05.15.01
C	CHAMFER ADDED	PB 08.18.95
B	METRIC EQUIVALENTS CORRECTED	PB 08.11.95
A	DIM. "S" ADDED	PB 10.11.94
REV	DESCRIPTION	ENGR DATE

TITLE: INSERTER/EXTRACTOR



TOLERANCES UNLESS NOTED .XX=±.010 .XXX=±.005 FRAC=1/64 ANG=1°	FILE # R1001 MAT'L: SEE NOTES RE: RICHCO, INC.	DWN: P.B. DT: 05-11-94	APP: DT:	FINAL	PART # R1001 SERIES	PRINT TYPE CA
RICHCO INC. PO BOX 804238, CHICAGO, 60680 (773) 539-4060						

Mouser Electronics

Authorized Distributor

Click to View Pricing, Inventory, Delivery & Lifecycle Information:

[Essentra:](#)

[R1001-062](#) [R1002-093](#)