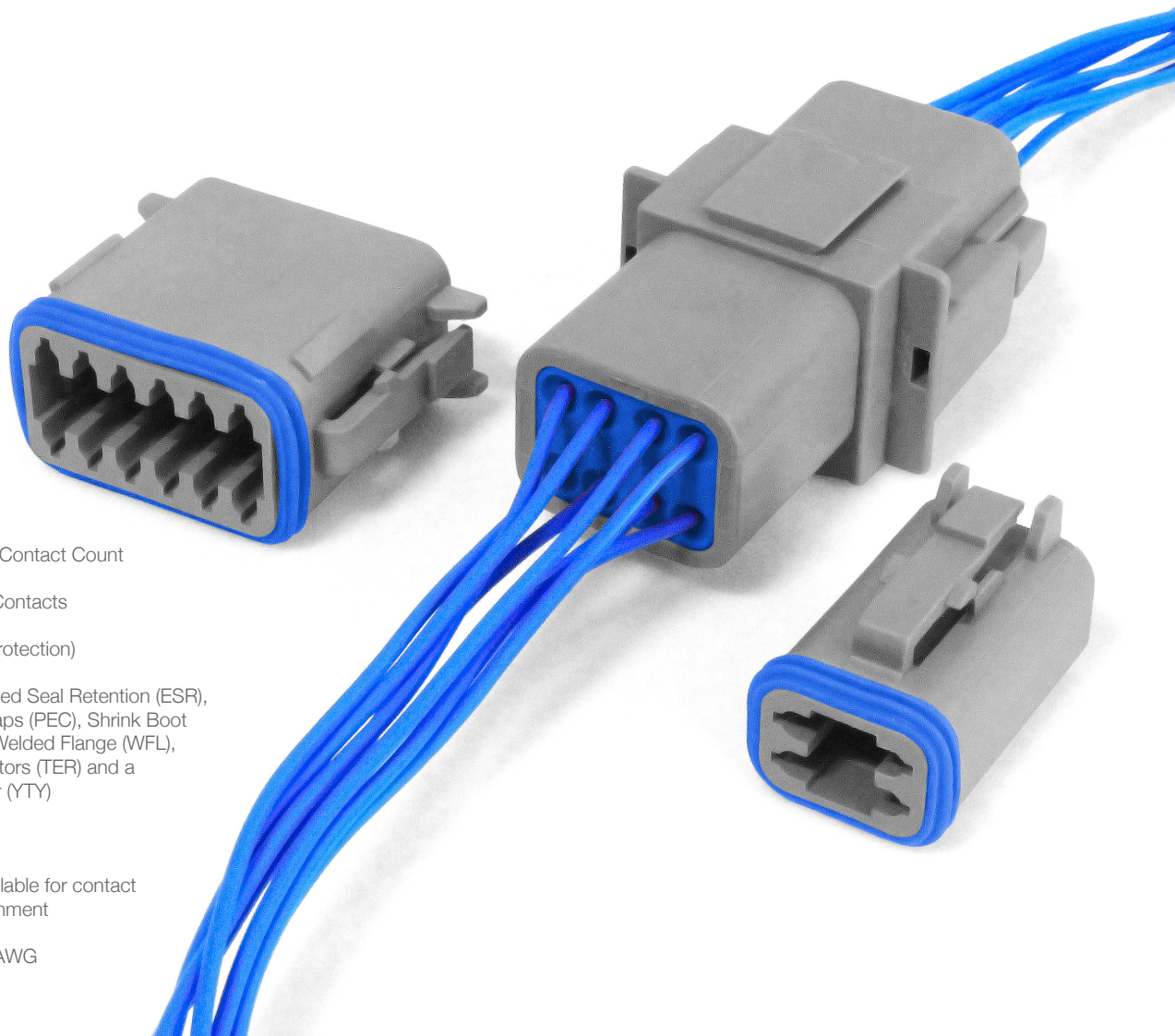


The Bulgin Rectangular Power Connector range offers a reliable, rugged solution for cable to cable applications in harsh environments with its environmentally sealed range of products.

The series has a male and female option, as well as modifications such as enhanced seal retention, protective end caps, shrink boot adapters, welded flange, terminating resistors and a Y-Type connector for the automotive industry.

Key Features:

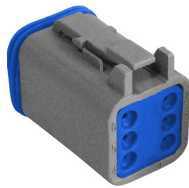
- 2, 3, 4, 6, 8 & 12 Contact Count
- Accepts size 16 Contacts
- IP68 (with Rear Protection)
- Choice of Enhanced Seal Retention (ESR), Protective End Caps (PEC), Shrink Boot Adapters (SBA), Welded Flange (WFL), Terminating Resistors (TER) and a Y-Type Connector (YTY)
- Rated to 13A
- Wedge-locks available for contact retention and alignment
- Accepts 14 - 20 AWG



RECTANGULAR Standard Rectangular Connectors

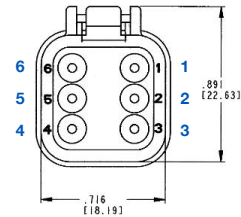


Standard Rectangular Connectors
Male



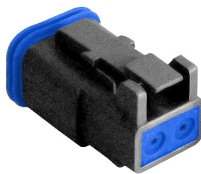
PX0100

- 2, 3, 4, 6, 8 & 12 Contacts
- Male housing
- Socket contacts
- Available in Grey and Black
- Additional options available



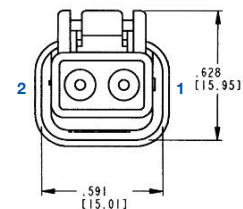
| Part Number | Contacts | Key | Termination | Colour | Additional |
|--------------|----------|-----|-------------|--------|------------|
| PX0100S02BK | 2 | - | Crimp | Black | - |
| PX0100S02GY | 2 | - | Crimp | Grey | - |
| PX0100S03BK | 3 | - | Crimp | Black | - |
| PX0100S03GY | 3 | - | Crimp | Grey | - |
| PX0100S04BK | 4 | - | Crimp | Black | - |
| PX0100S04GY | 4 | - | Crimp | Grey | - |
| PX0100S06BK | 6 | - | Crimp | Black | - |
| PX0100S06GY | 6 | - | Crimp | Grey | - |
| PX0100S08AGY | 8 | A | Crimp | Grey | - |
| PX0100S12AGY | 12 | A | Crimp | Grey | - |

Standard Rectangular Connectors
Male - ESR



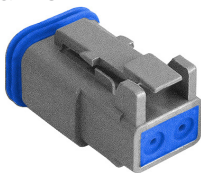
PX0102

- 2 Contacts
- Male housing
- Enhanced seal retention
- Socket contacts
- Available in Black
- Additional options available



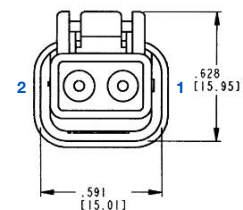
| Part Number | Contacts | Key | Termination | Colour | Additional |
|-------------|----------|-----|-------------|--------|------------|
| PX0102S02BK | 2 | - | Crimp | Black | ESR |

Standard Rectangular Connectors
Male - ESR & PEC



PX0103

- 2 Contacts
- Male housing
- Enhanced seal retention & protective end cap
- Socket contacts
- Available in Grey
- Additional options available



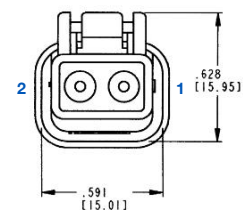
| Part Number | Contacts | Key | Termination | Colour | Additional |
|-------------|----------|-----|-------------|--------|------------|
| PX0103S02GY | 2 | - | Crimp | Grey | ESR & PEC |

Standard Rectangular Connectors
Male - ESR & SBA



PX0104

- 2 Contacts
- Male housing
- Enhanced seal retention & shrink boot adapter
- Socket contacts
- Available in Black
- Additional options available



| Part Number | Contacts | Key | Termination | Colour | Additional |
|-------------|----------|-----|-------------|--------|------------|
| PX0104S02BK | 2 | - | Crimp | Black | ESR & SBA |

RECTANGULAR Standard Rectangular Connectors

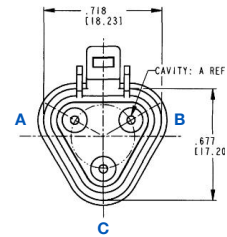


Standard Rectangular Connectors
Male - PEC



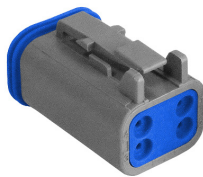
PX0105

- 2, 3, 4, 6, 8 & 12 Contacts
- Male housing
- Protective end cap
- Socket contacts
- Available in Grey and Black
- Additional options available



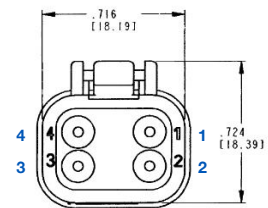
| Part Number | Contacts | Key | Termination | Colour | Additional |
|--------------|----------|-----|-------------|--------|------------|
| PX0105S02BK | 2 | - | Crimp | Black | PEC |
| PX0105S02GY | 2 | - | Crimp | Grey | PEC |
| PX0105S03BK | 3 | - | Crimp | Black | PEC |
| PX0105S03GY | 3 | - | Crimp | Grey | PEC |
| PX0105S04BK | 4 | - | Crimp | Black | PEC |
| PX0105S04GY | 4 | - | Crimp | Grey | PEC |
| PX0105S06BK | 6 | - | Crimp | Black | PEC |
| PX0105S06GY | 6 | - | Crimp | Grey | PEC |
| PX0105S08ABK | 8 | A | Crimp | Black | PEC |
| PX0105S08AGY | 8 | A | Crimp | Grey | PEC |
| PX0105S12AGY | 12 | A | Crimp | Grey | PEC |
| PX0105S12ABK | 12 | A | Crimp | Black | PEC |

Standard Rectangular Connectors
Male - SBA



PX0108

- 2, 3 & 4 Contacts
- Male housing
- Shrink boot adapter
- Socket contacts
- Available in Grey
- Additional options available



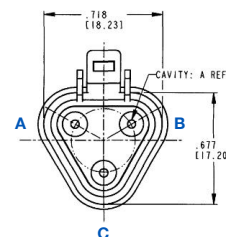
| Part Number | Contacts | Key | Termination | Colour | Additional |
|-------------|----------|-----|-------------|--------|------------|
| PX0108S02GY | 2 | - | Crimp | Grey | SBA |
| PX0108S03GY | 3 | - | Crimp | Grey | SBA |
| PX0108S04GY | 4 | - | Crimp | Grey | SBA |

Standard Rectangular Connectors
Male - TER



PX0110

- 3 Contacts
- Male housing
- Terminating resistor
- Socket contacts
- Available in Grey
- Additional options available



| Part Number | Contacts | Key | Termination | Colour | Additional |
|-------------|----------|-----|-------------|--------|------------|
| PX0110S03GY | 3 | - | Crimp | Grey | TER |

RECTANGULAR Standard Rectangular Connectors

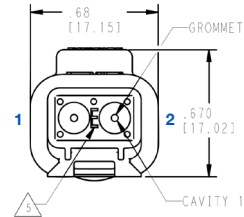


Standard Rectangular Connectors
Female



PX0101

- 2, 3, 4, 6, 8 & 12 Contacts
- Female Housing
- Plug contacts
- Available in Grey and Black
- Additional options available



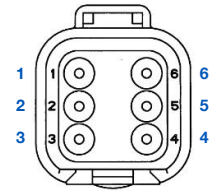
| Part Number | Contacts | Key | Termination | Colour | Additional |
|--------------|----------|-----|-------------|--------|------------|
| PX0101P02BK | 2 | - | Crimp | Black | - |
| PX0101P02GY | 2 | - | Crimp | Grey | - |
| PX0101P03BK | 3 | - | Crimp | Black | - |
| PX0101P03GY | 3 | - | Crimp | Grey | - |
| PX0101P04BK | 4 | - | Crimp | Black | - |
| PX0101P04GY | 4 | - | Crimp | Grey | - |
| PX0101P06BK | 6 | - | Crimp | Black | - |
| PX0101P06GY | 6 | - | Crimp | Grey | - |
| PX0101P08ABK | 8 | A | Crimp | Black | - |
| PX0101P08AGY | 8 | A | Crimp | Grey | - |
| PX0101P12ABK | 12 | A | Crimp | Black | - |
| PX0101P12AGY | 12 | A | Crimp | Grey | - |

Standard Rectangular Connectors
Female - PEC



PX0106

- 2, 3, 4, 6, 8 & 12 Contacts
- Female Housing
- Protective end cap
- Plug contacts
- Available in Grey and Black
- Additional options available



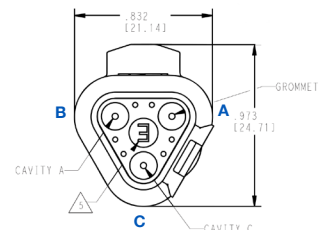
| Part Number | Contacts | Key | Termination | Colour | Additional |
|--------------|----------|-----|-------------|--------|------------|
| PX0106P02BK | 2 | - | Crimp | Black | PEC |
| PX0106P02GY | 2 | - | Crimp | Grey | PEC |
| PX0106P03BK | 3 | - | Crimp | Black | PEC |
| PX0106P03GY | 3 | - | Crimp | Grey | PEC |
| PX0106P04BK | 4 | - | Crimp | Black | PEC |
| PX0106P04GY | 4 | - | Crimp | Grey | PEC |
| PX0106P06BK | 6 | - | Crimp | Black | PEC |
| PX0106P06GY | 6 | - | Crimp | Grey | PEC |
| PX0106P08ABK | 8 | A | Crimp | Black | PEC |
| PX0106P08AGY | 8 | A | Crimp | Grey | PEC |
| PX0106P12ABK | 12 | A | Crimp | Black | PEC |
| PX0106P12AGY | 12 | A | Crimp | Grey | PEC |

Standard Rectangular Connectors
Female - PEC & SBA



PX0107

- 3 Contacts
- Female Housing
- Protective end cap & shrink boot adapter
- Plug contacts
- Available in Grey
- Additional options available



| Part Number | Contacts | Key | Termination | Colour | Additional |
|-------------|----------|-----|-------------|--------|------------|
| PX0107P03GY | 3 | - | Crimp | Grey | PEC & SBA |

RECTANGULAR Standard Rectangular Connectors

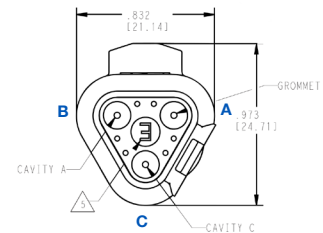


Standard Rectangular Connectors
Female - SBA



PX0109

- 2, 3 & 4 Contacts
- Female Housing
- Shrink boot adapter
- Plug contacts
- Available in Grey and Black
- Additional options available



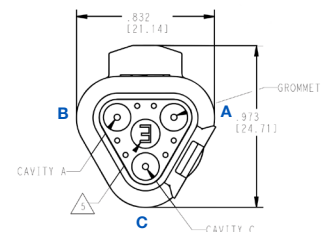
| Part Number | Contacts | Key | Termination | Colour | Additional |
|-------------|----------|-----|-------------|--------|------------|
| PX0109P02BK | 2 | - | Crimp | Black | SBA |
| PX0109P02GY | 2 | - | Crimp | Grey | SBA |
| PX0109P03BK | 3 | - | Crimp | Black | SBA |
| PX0109P04GY | 4 | - | Crimp | Grey | SBA |

Standard Rectangular Connectors
Female - TER



PX0111

- 3 Contacts
- Female Housing
- Terminating resistor
- Plug contacts
- Available in Grey
- Additional options available



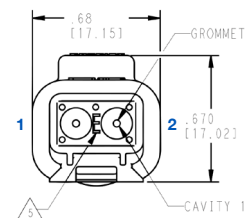
| Part Number | Contacts | Key | Termination | Colour | Additional |
|-------------|----------|-----|-------------|--------|------------|
| PX0111P03GY | 3 | - | Crimp | Grey | TER |

Standard Rectangular Connectors
Female - WFL



PX0112

- 2, 3, 4, 8 & 12 Contacts
- Female Housing
- Welded flange
- Plug contacts
- Available in Grey
- Additional options available



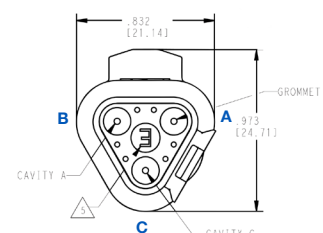
| Part Number | Contacts | Key | Termination | Colour | Additional |
|--------------|----------|-----|-------------|--------|------------|
| PX0112P02GY | 2 | - | Crimp | Grey | WFL |
| PX0112P03GY | 3 | - | Crimp | Grey | WFL |
| PX0112P04GY | 4 | - | Crimp | Grey | WFL |
| PX0112P08AGY | 8 | A | Crimp | Grey | WFL |
| PX0112P12AGY | 12 | A | Crimp | Grey | WFL |

Standard Rectangular Connectors
Female - YTY



PX0113

- 3 Contacts
- Female Housing
- Y-type connector
- Plug contacts
- Available in Grey
- Additional options available



| Part Number | Contacts | Key | Termination | Colour | Additional |
|-------------|----------|-----|-------------|--------|------------|
| PX0113P03GY | 3 | - | Crimp | Grey | YTY |

Contacts

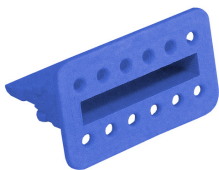


SA1000

- Crimp Plug & Sockets
- Choice of Gold and Nickel Plated
- Green Stripe available

| Part Number | Plating | AWG | Type | Plug / Socket | Additional |
|-------------|----------------|------------|---------|---------------|--------------|
| SA1000/G | Nickel Plating | 14 | Solid | Plug | Green Stripe |
| SA1001/G | Nickel Plating | 14 | Solid | Socket | Green Stripe |
| SA1002/G | Nickel Plating | 16 - 20 | Solid | Plug | Green Stripe |
| SA1003/G | Nickel Plating | 16 - 20 | Solid | Socket | Green Stripe |
| SA1000 | Nickel Plating | 14 | Solid | Plug | - |
| SA1001 | Nickel Plating | 14 | Solid | Socket | - |
| SA1002 | Nickel Plating | 16 - 20 | Solid | Plug | - |
| SA1003 | Nickel Plating | 16 - 20 | Solid | Socket | - |
| SA1004 | Nickel Plating | 16 - 20 | Stamped | Plug | Bandolier |
| SA1005 | Nickel Plating | 16 - 20 | Stamped | Socket | Bandolier |
| SA1006 | Nickel Plating | 14, 16, 18 | Stamped | Plug | Bandolier |
| SA1007 | Nickel Plating | 14, 16, 18 | Stamped | Socket | Bandolier |
| SA1008 | Gold Plating | 14, 16, 18 | Stamped | Plug | Bandolier |
| SA1009 | Gold Plating | 14, 16, 18 | Stamped | Socket | Bandolier |

Wedgelocks



WLP12

- Plug & Sockets available
- 2, 3, 4, 6, 8 & 12 Contact

* Wedgelocks are sold separately and are required for confirmation of alignment of contact. Please refer to the chart above to determine part required: e.g. WLP02 is required for 2 Contact female housings

| Part Number | Contacts | Plug / Socket | Additional |
|-------------|----------|---------------|---------------|
| WLP02 | 02 | Plug | - |
| WLS02 | 02 | Socket | - |
| WLS02ENS | 02 | Socket | Enhanced Seal |
| WLP03 | 03 | Plug | - |
| WLS03 | 03 | Socket | - |
| WLP04 | 04 | Plug | - |
| WLS04 | 04 | Socket | - |
| WLP06 | 06 | Plug | - |
| WLS06 | 06 | Socket | - |
| WLP08 | 08 | Plug | - |
| WLS08 | 08 | Socket | - |
| WLP12 | 12 | Plug | - |
| WLS12 | 12 | Socket | - |

Tooling



- Crimp tooling available
- Probe extraction tool

| Part Number | Additional |
|-------------|--------------------------------------------------------------------------|
| 10000 | Crimping tool for heavy duty Rectangular Connectors (series coming soon) |
| 10001 | Probe extraction tool |
| 10002 | Crimping tool for Rectangular Connectors |

Electrical:

No Contacts: 2, 3, 4, 6, 8 & 12
 Current Rating: 13A
 Voltage Rating: 250V DC
 Insulation Resistance: >1000MΩ (@ 500V DC)
 Dielectric Strength: <2mA @ 15V AC
 Operating Temperature Range: -20°C to +150°C

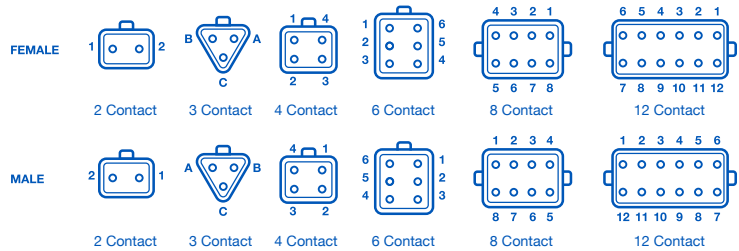
Material

Body Mouldings: Polybutylene Terephthalate, Polyamide
 Glass Fiber
 Contacts: Copper Alloy Nickel Plated, Copper Alloy
 Gold Plated
 Rubber Seal: Silicone Rubber
 RoHS Compliant

Mechanical:

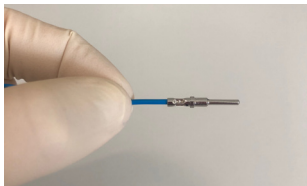
Sealing: IP68 (with Rear Protection)
 Contact Accommodation: 14 - 20 AWG 2.5-0.35 mm²
 Termination: Crimp terminals
 Contact Retention: Size 16: 111N (25 lbs)
 Cycles: 100

Contact Layout (Rear View)



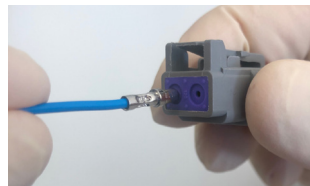
Contact Insertion Instructions

Step One:



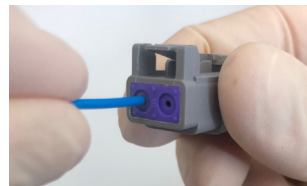
Use a previously crimped contact and wire and hold just behind the contact barrel.

Step Two:



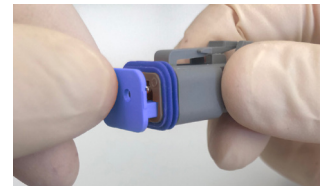
Line the contact up with the grommet.

Step Three:



Push the contact until a click is felt. Check the contact is in place by gently tugging and confirming alignment. Repeat for number of contacts desired

Step Four:



When contacts are in place, insert the appropriate wedgelock until a click is heard. Once male and female housings are prepared the parts can be mated

| PX0 | XXX | X | XX | X | XX |
|--------------|------------------------------------------------------------------------------------------------------------------------------------------------------------------------------------------------------------------------------------------------------------------------------------------------------------------------------------------------------------------------------------------------------------------------------------------------------------------------------------------------------------------|------------------------|----------------------------------|------------|-------------------------|
| Range | Body Type | Contact Type | Contacts | Key | Colour |
| PX0 | 100 = Male 101 = Female 102 = Male Enhanced Seal Retention 103 = Male Enhanced Seal Retention & Protective End Cap 104 = Male Enhanced Seal Retention & Shrink Boot Adapter 105 = Male Protective End Cap 106 = Female Protective End Cap 107 = Female Protective End Cap & Shrink Boot Adapter 108 = Male Shrink Boot Adapter 109 = Female Shrink Boot Adapter 110 = Male Terminating Resistor 111 = Terminating Resistor 112 = Female Welded Flange 113 = Female Y Type | S = Socket P = Plug | 02 03 04 06 08 12 | A = A Key | GY = Grey BK = Black |

Mouser Electronics

Authorized Distributor

Click to View Pricing, Inventory, Delivery & Lifecycle Information:

Bulgin:

[10000](#) [10001](#) [10002](#) [PX0100S02BK](#) [PX0100S02GY](#) [PX0100S03BK](#) [WLS03](#) [WLS04](#) [WLS06](#) [WLS08](#) [WLS12](#)
[WLP04](#) [WLP06](#) [WLP08](#) [WLP12](#) [WLS02](#) [WLS02ENS](#) [SA1006](#) [SA1007](#) [SA1008](#) [SA1009](#) [WLP02](#) [WLP03](#)
[SA1002](#) [SA1002/G](#) [SA1003](#) [SA1003/G](#) [SA1004](#) [SA1005](#) [PX0112P12AGY](#) [PX0113P03GY](#) [SA1000](#) [SA1000/G](#)
[SA1001](#) [SA1001/G](#) [PX0110S03GY](#) [PX0111P03GY](#) [PX0112P02GY](#) [PX0112P03GY](#) [PX0112P04GY](#)
[PX0112P08AGY](#) [PX0108S03GY](#) [PX0108S04GY](#) [PX0109P02BK](#) [PX0109P02GY](#) [PX0109P03BK](#) [PX0109P04GY](#)
[PX0106P08ABK](#) [PX0106P08AGY](#) [PX0106P12ABK](#) [PX0106P12AGY](#) [PX0107P03GY](#) [PX0108S02GY](#) [PX0106P03BK](#)
[PX0106P03GY](#) [PX0106P04BK](#) [PX0106P04GY](#) [PX0106P06BK](#) [PX0106P06GY](#) [PX0105S08ABK](#) [PX0105S08AGY](#)
[PX0105S12ABK](#) [PX0105S12AGY](#) [PX0106P02BK](#) [PX0106P02GY](#) [PX0105S03BK](#) [PX0105S03GY](#) [PX0105S04BK](#)
[PX0105S04GY](#) [PX0105S06BK](#) [PX0105S06GY](#) [PX0101P12AGY](#) [PX0102S02BK](#) [PX0103S02GY](#) [PX0104S02BK](#)
[PX0105S02BK](#) [PX0105S02GY](#) [PX0101P04GY](#) [PX0101P06BK](#) [PX0101P06GY](#) [PX0101P08ABK](#) [PX0101P08AGY](#)
[PX0101P12ABK](#) [PX0100S12AGY](#) [PX0101P02BK](#) [PX0101P02GY](#) [PX0101P03BK](#) [PX0101P03GY](#) [PX0101P04BK](#)
[PX0100S03GY](#) [PX0100S04BK](#) [PX0100S04GY](#) [PX0100S06BK](#) [PX0100S06GY](#) [PX0100S08AGY](#)