

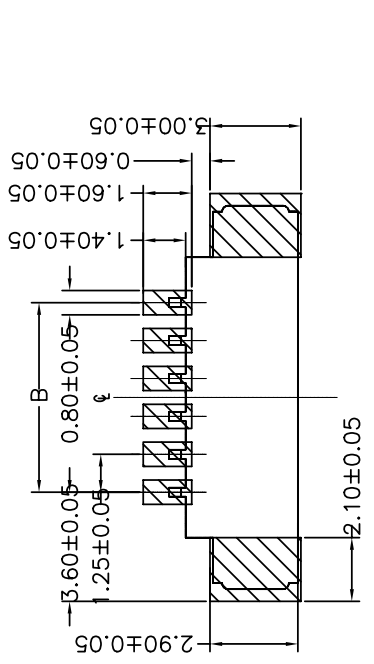
NOTES

- SPECIFICATIONS**
 Current Rating: 1A AC,DC
 Voltage Rating: 125V AC,DC
 Temperature Range: -40°C ~ +105°C
 Contact Resistance: 20mΩ Max.
 Insulation Resistance: 100MΩ Min.
 Withstanding Voltage: 500V AC/minute
- Material & Finish**
 Housing: Natural Thermoplastic, UL94V-0
 Contact and metal hold-down: Phosphor Bronze
 Plating of contact: Matte Tin or gold plating over Nickel
 Plating of metal hold-down: Matte Tin over Nickel
- Crimping application hand tool P/N: 10118656-1000**
- Ordering Information & Dimensions:**
 10114828- X X X XX X LF

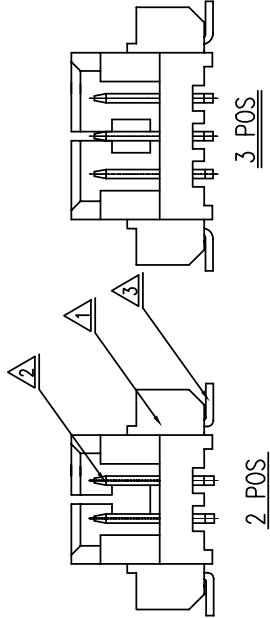
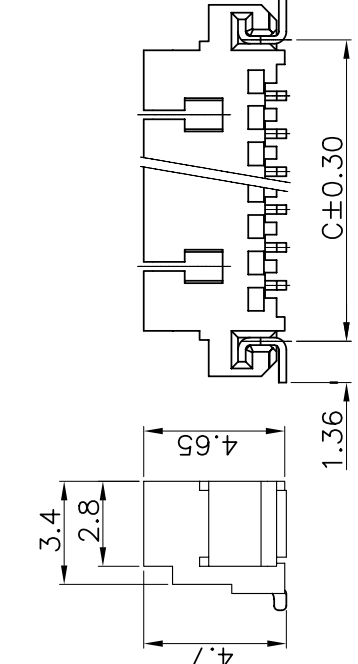
- Material: LCP
 Plating: VOID/NORMAL
 Matte Tin: ISEE SHEET 2&4 PIN
 Gold Flash: pin counts from 02~15
 Packaging: 1: Tape & Reel
 2: Tape & Reel+ Cap(sheet 2)

Part No.	Dimensions				
	POS	A	B	C	E
10114828-xxx02LF	2	4.25	1.25±0.10	4.94	3.05
10114828-xxx03LF	3	5.50	2.50±0.10	6.19	4.30
10114828-xxx04LF	4	6.75	3.75±0.10	7.44	5.55
10114828-xxx05LF	5	8.00	5.00±0.10	8.69	6.80
10114828-xxx06LF	6	9.25	6.25±0.15	9.94	8.05
10114828-xxx07LF	7	10.50	7.50±0.15	11.19	9.30
10114828-xxx08LF	8	11.75	8.75±0.15	12.44	10.55
10114828-xxx09LF	9	13.00	10.00±0.15	13.69	11.80
10114828-xxx10LF	10	14.25	11.25±0.20	14.94	13.05
10114828-xxx11LF	11	15.50	12.50±0.20	16.19	14.30
10114828-xxx12LF	12	16.75	13.75±0.20	17.44	15.55
10114828-xxx13LF	13	18.00	15.00±0.20	18.69	16.80
10114828-xxx14LF	14	19.25	16.25±0.20	19.94	18.05
10114828-xxx15LF	15	20.50	17.50±0.20	21.19	19.30

Note A: The LF means RoHS compliance, the housing will withstand exposure to peak temperature 260 degree C for 5 sec in the IR re-flow process.



P.C. BOARD LAYOUT
 PCB TOLERANCES:±0.05



ITEM	MATERIAL	DESCRIPTION
△1	THERMOPLASTIC HIGH TEMPERATURE	HOUSING
△2	COPPER ALLOY	TERMINAL
△3	COPPER ALLOY	HOLD DOWN

rev	ecn no	dr	date
A	T10-0145	J H	12/1/10
H	ELX-H-1705	TJM	2014/04/28
J	ELX-H-1706	TJM	2014/04/21

www.fciconnect.com		Dr	JASON HSU	12/1/10
		Eng	JASON HSU	12/1/10
		Chr	GARY HSIEH	12/1/10
		Appr	JOSEPH HSIA	12/1/10



WTB 1.25MM WAFER 180° SMT
 catalog no

surface	6.4	tolerance std	projection	MM
ISO 1302	ISO 406	ISO 1101	ISO 1101	MM
TOLERANCES UNLESS OTHERWISE SPECIFIED		0.X ±0.25	size	A4
		0.XX ±0.15	ECN	ECN
		0.XXX	Spec ref	10114828

1 2 3 4

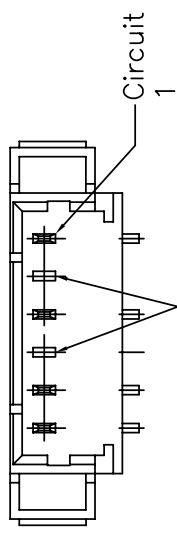
A A

B B

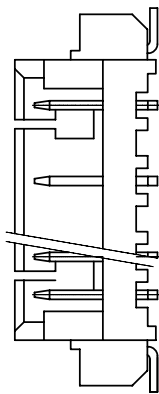
A C

C

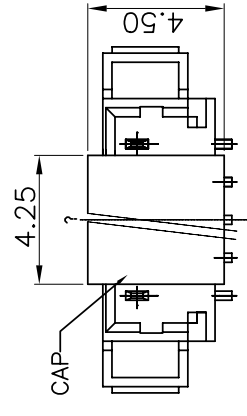
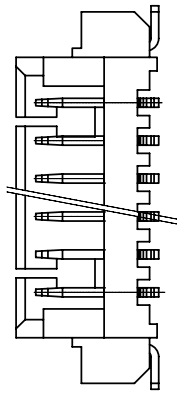
D D



Void No.2PIN&No.4PIN



10114828-XXXXX1LF



ASSEMBLY CAP



Copyright FCI

D

rev	ecn no	chr	date
J			

www.ficonnect.com		surface 6.4 / ISO 1302	tolerance std ISO 406 ISO 1101	projection	MM
TOLERANCES UNLESS OTHERWISE SPECIFIED		ANGULAR LINEAR		size A4	Scale 1.000
Dr	JASON HSU	0X	±0.25	ECN	
Eng	JASON HSU	0XX	±0.15	Spec ref	
Chr	GARY HSIEH	0XXX	-		
Appr	JOSEPH HSIA	Product family	WTB		
		catalog no	WTB 1.25MM WAFER 180° SMT	Rev.	J
				CUSTOMER	sheet 2 of 2