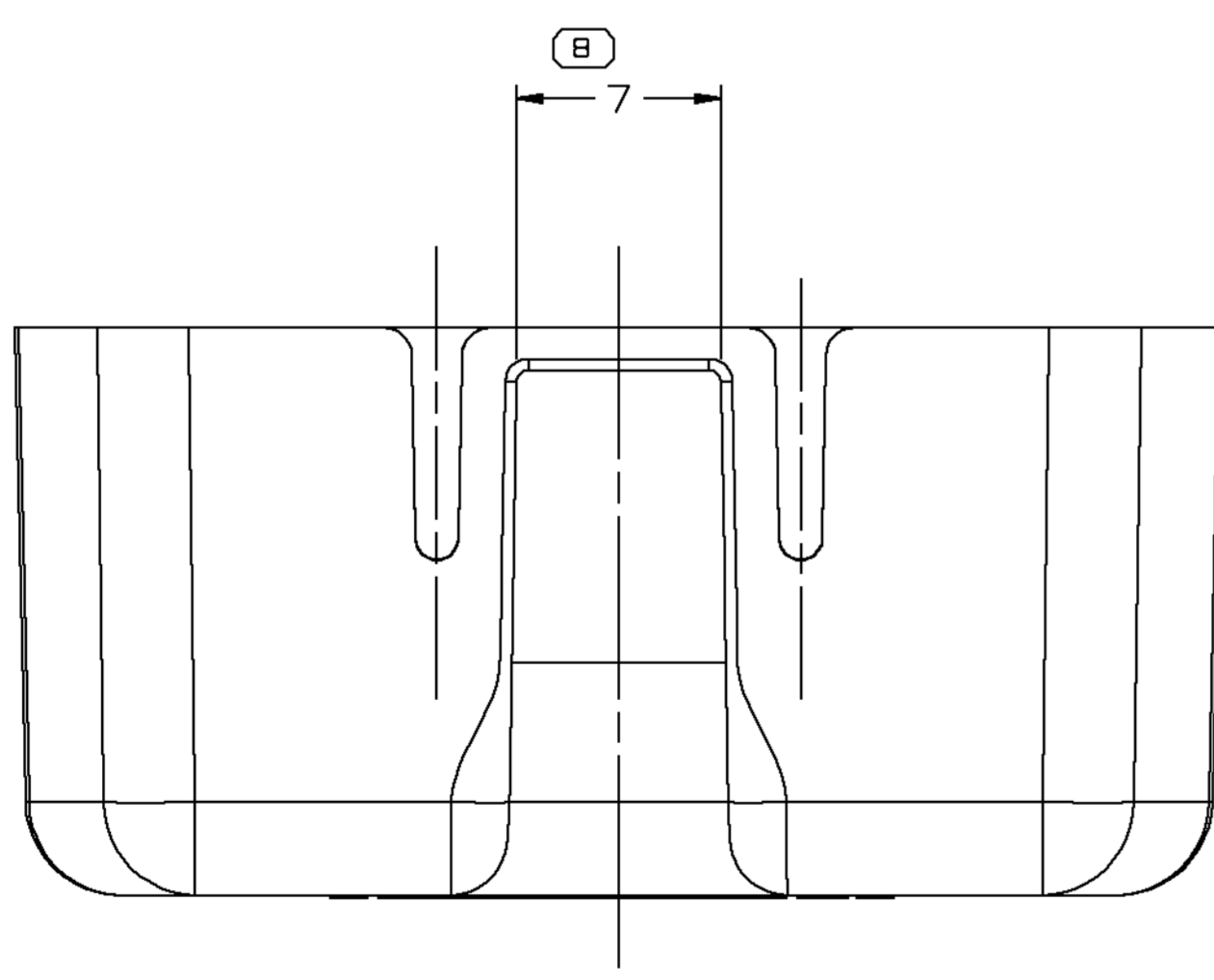
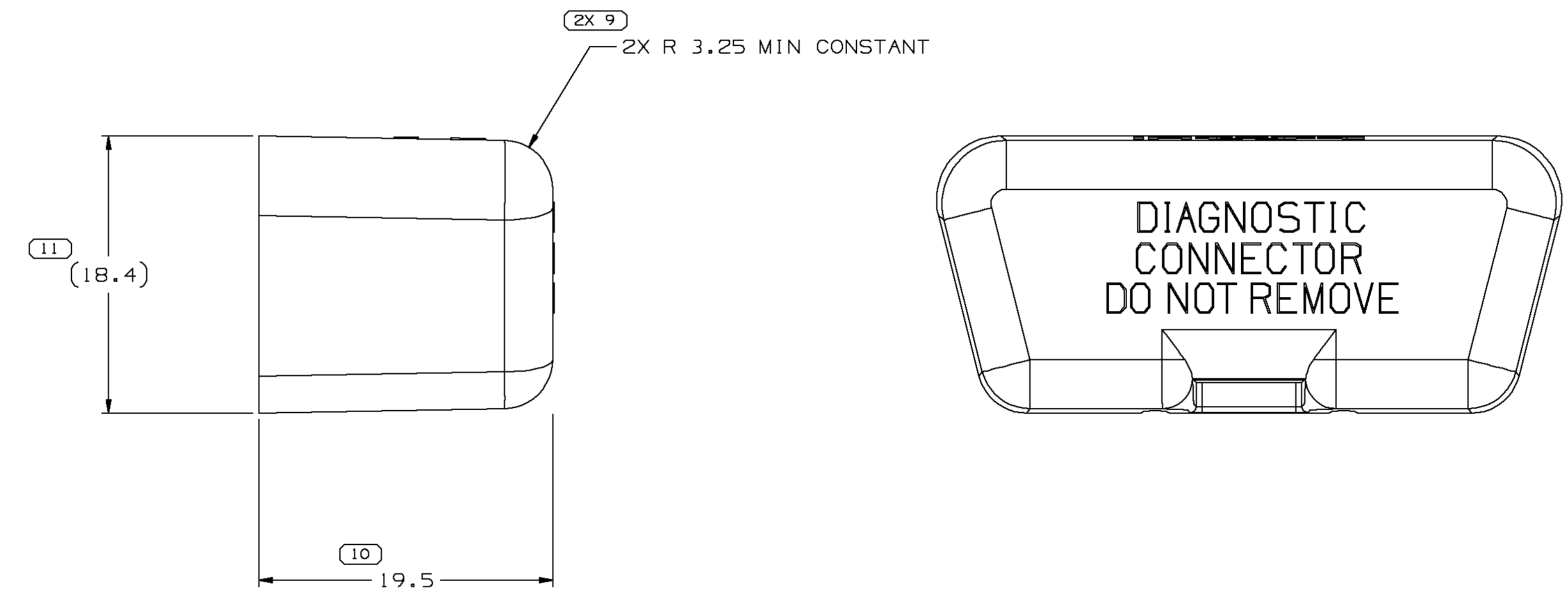
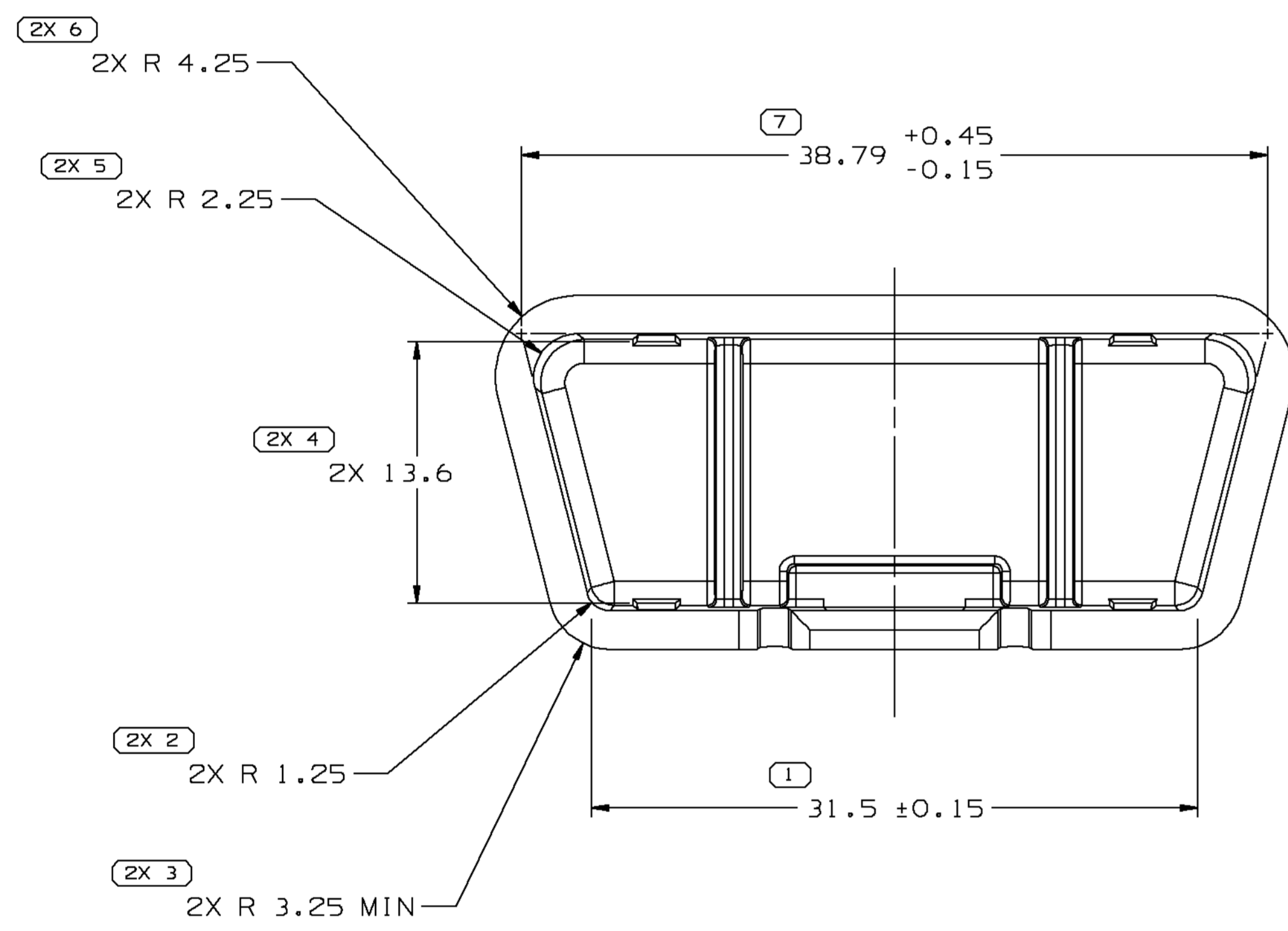
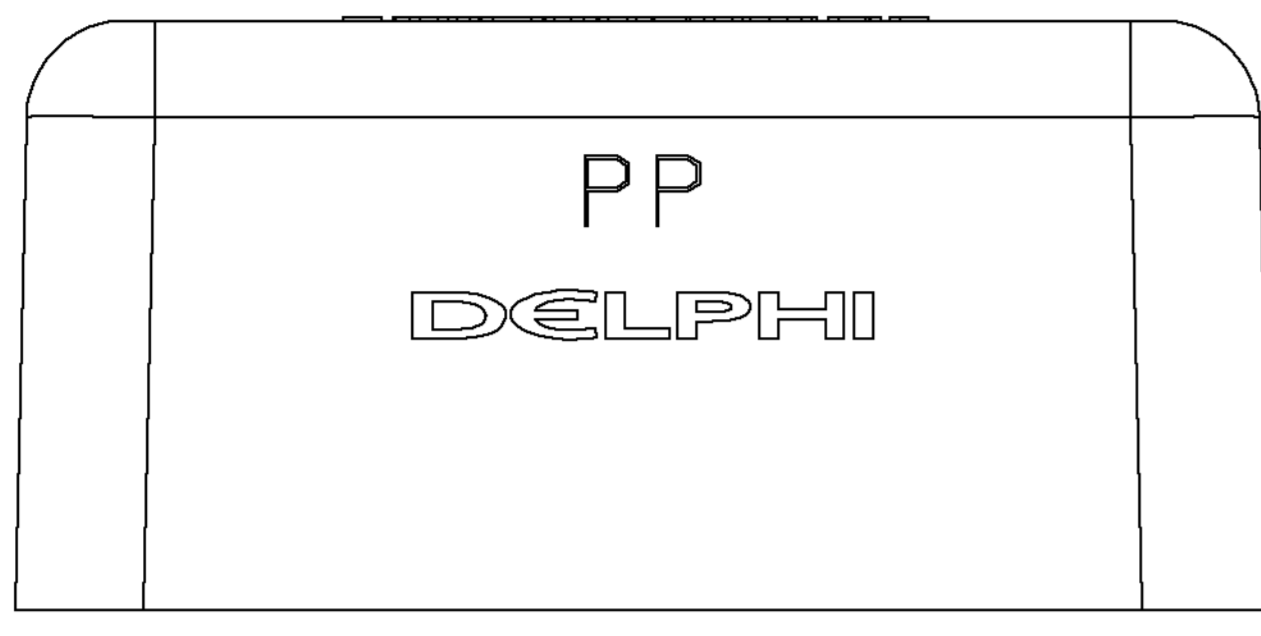
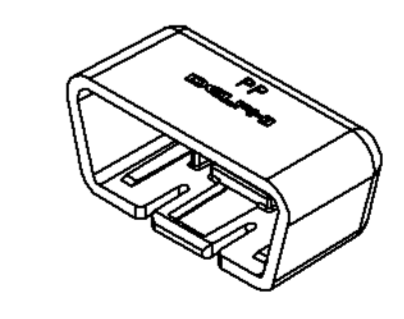


SYMBOL DEFINITION		MISSING SYMBOLS	
A DIMENSION WITHOUT AN INSPECTION REPORT SYMBOL DOES NOT REQUIRE INSPECTION. IT MAY BE CONTROLLED ON THE INDIVIDUAL COMPONENT DRAWING.	TOTAL NO OF INSPECTIONS REQUIRED	NO MISSING SYMBOL NUMBER	
	17		
	LAST NO. USED		
	11		

DWG STATUS					REVISION HISTORY			AUTH	DR	APVD	APVD
DATE	STG	REV	N/P	CHG	ZONE						
07NO01	R	C3	-	-		REDRAWN TO PD & DIM TOL WAS ±0.15	216795	RVP	RVP	OMC	
26AU02	R	C4	-	-		UPDATED PDM ATTRIBUTES, MAT'L SPEC WAS R0061354 PP BLK & ADDED NOTES (2 PLCS)	229656	RVP	RVP	ET	
24JA03	R	O4	-	-		REVISED MAT'L SPEC	236015	RAO	RH	ET	



- NOTES
- UNLESS OTHERWISE SPECIFIED AND/OR INDICATED: DIMENSIONS ARE TO FACE OF VIEW SHOWN AND AUTOMATICALLY ROUNDED BY COMPUTER FOR INSPECTION (SEE MATH MODEL FOR PRECISE DIMENSIONS). FOR ALL OTHER DIMENSIONS NOT SHOWN BUT REQUIRED FOR TOOL BUILD, SEE MATH MODEL FOR PRECISE TOOL PATH DATA.
 - MATING COMPONENTS OR EQUIVALENT: CONNECTOR 12110250
 - MATERIAL RECYCLING CODE >PP< PER SAE J1344. (2.3)X(0.1) RAISED CHARACTERS AS SHOWN TO BE LOCATED ON ANY EXTERIOR SURFACE. OPTIONAL CONSTRUCTION TO BE NO MATERIAL RECYCLING CODE.
 - OUTSIDE SURFACE TO HAVE A MOLD TECH FINISH. MOLD TECH FINISH MT-1055-2 OR EQUIVALENT
 - (2.3)X(0.1) RAISED DELPHI CORPORATE BRAND TO BE LOCATED ON ANY EXTERIOR SURFACE, PREFERABLY VISIBLE AT FINAL ASSEMBLY. OPTIONAL CONSTRUCTION TO BE "PED" OR NO LOGO.



 R 0.2 MAX SHARP CORNER TOLERANCE	 DIMENSIONAL RANGE (MM) FROM TO 0 20 30 70 100 150 200 250 300 400 10, 15 ±0.2 ±0.3 ±0.4 ±0.5 ±0.6 ±0.8 ±1 ±1.2	 CHART ET 300 400	 THIRD ANGLE PROJECTION	 DO NOT SCALE	 USE MATH DATA	

DELPHI
DELPHI PACKARD ELECTRIC SYSTEMS
MAREN, OH

DR	A. RASCHILLA	DATE	10SE93
APVD1	A. RASCHILLA		10SE93
APVD2	G. CHAPMAN		28SE93
APVD3	A. RASCHILLA		06OC93
APVD4			
APVD5			

MATERIAL: SUBSTANCES OF CONCERN AND RECYCLED CONTENT PER DELPHI 10949001

DRAWING NAME: M2097001 PP IM BLK
COV CONN M/P BLK

DRAWING NUMBER: 12146933

SIZE: A0
SCALE: 4:1
FRAME NO: 1 OF 1
SHEET NO: 1 OF 1
DATE: 04

Mouser Electronics

Authorized Distributor

Click to View Pricing, Inventory, Delivery & Lifecycle Information:

[Aptiv:](#)

[12146933](#) [12146933-B](#)