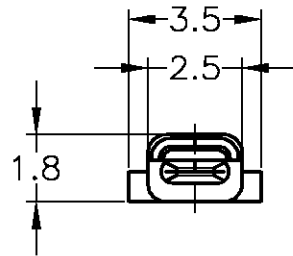
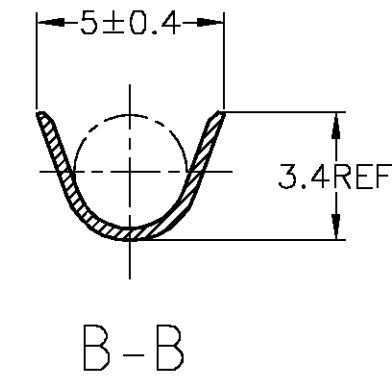
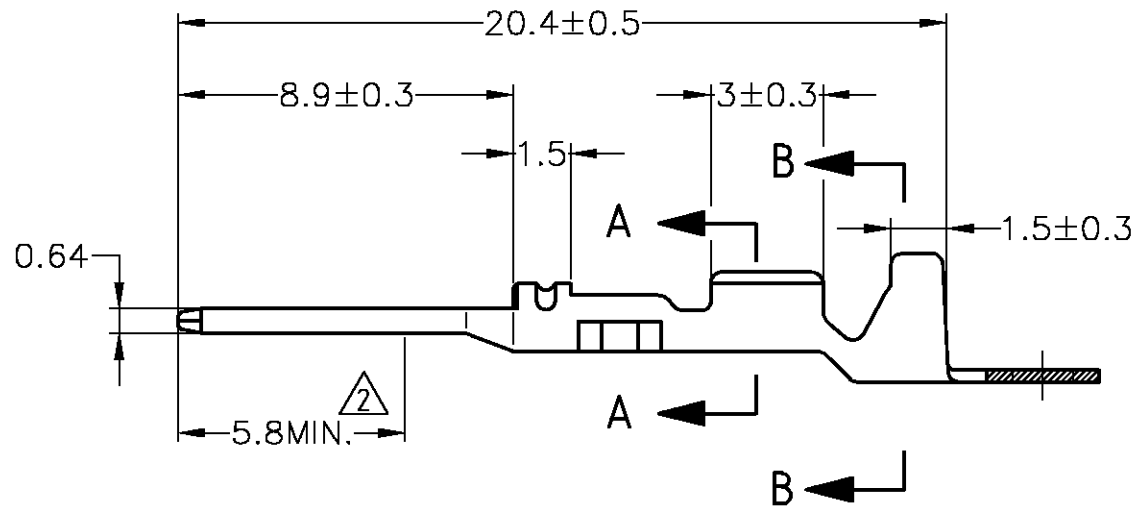
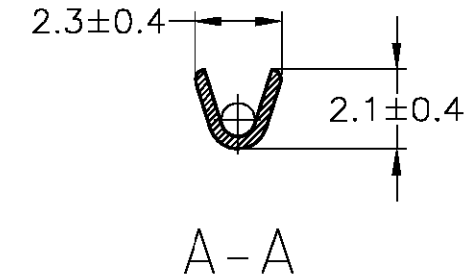
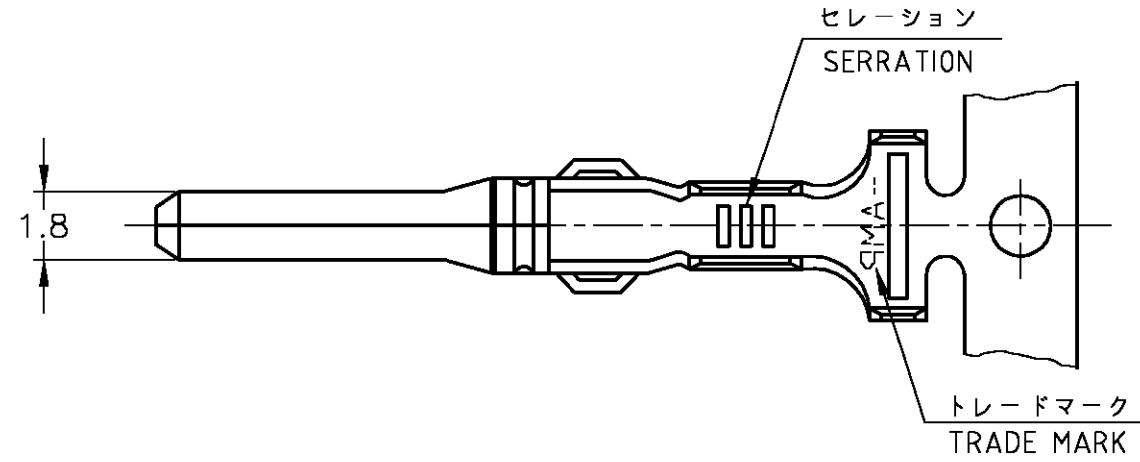


THIS DRAWING IS UNPUBLISHED. RELEASED FOR PUBLICATION
 © COPYRIGHT BY TYCO ELECTRONICS CORPORATION. ALL RIGHTS RESERVED.

LOC	DIST	REVISIONS					
P	LTR	DESCRIPTION	DATE	DWN	APVD		
J	—	C	REDRAWN W/CHANGE	FJ00-1458-01	27JUN01	TS	KB



1. 嵌合相手端子型番 : 171630
 △部分金めっき

1. RECEPTACLE CONTACT : 171630
 △SELECTIVE GOLD PLATING

△ SELECTIVE GOLD PLATING 部分金めっき	BRASS t0.32 黄銅 板厚0.32	171631-2	2
PRE-TIN (0.76μm MIN.) 錫めっき済	BRASS t0.32 黄銅 板厚0.32	171631-1	1
FINISH 仕上	MATERIAL 材料	PN 型番	ITEM No. 項番

WIRE RANGE
抱合電線断面積 AV.AVS
0.2-0.5mm² (AWG #24-#20)

INSULATION DIA
被覆外径
1.4-2.4

THIS DRAWING IS A CONTROLLED DOCUMENT.		DWN T.SHINOHARA	27JUN01	Tyco Electronics AMP K.K. Kawasaki, Japan	
DIMENSIONS: 単位: 概 MM		CHK K.BETSUI	27JUN01	NAME 名称	
TOLERANCES UNLESS OTHERWISE SPECIFIED: 一般公差		APVD K.BETSUI	27JUN01	PRODUCT SPEC 製品規格	
0 PLC ± - 1 PLC ± - 2 PLC ± - 3 PLC ± - 4 PLC ± - ANGLES ± -		APPLICATION SPEC 取付適用規格	114-5082	ECONOSEAL J-MARKII+ CONNECTOR TAB CONTACT	
MATERIAL 材料	SEE TABLE 表参照	FINISH 仕上	SEE TABLE 表参照	SIZE A3	CAGE CODE 00779
一様公差 (GENERAL TOLERANCE) 10mm以下 : ±0.2 10mm以上 30mm以下 : ±0.25 30mm以上 100mm以下 : ±0.3 角度 : ±3°		WEIGHT 0.35 g	DRAWING NO 番号 C-171631	RESTRICTED TO	
CUSTOMER DRAWING			SCALE 尺度 5:1	SHEET 1 OF 1	REV C