

MPT 1,5/S/1P-PE - Mini ground terminal block



3248117

<https://www.phoenixcontact.com/us/products/3248117>

Please be informed that the data shown in this PDF document is generated from our Online Catalog. Please find the complete data in the user documentation. Our General Terms of Use for Downloads are valid.



Mini ground terminal block, number of connections: 2, connection method: Push-in connection, 1 level, cross section: 0.14 mm² - 1.5 mm², mounting type: NS 15, color: green-yellow

Your advantages

- Space-saving, thanks to the compact design
- Flexible use, thanks to DIN rail and direct mounting
- Space-saving potential distribution, thanks to compact micro potential distributors
- Clear arrangement thanks to marking of all terminal points
- Convenient test options, thanks to test openings at every terminal point
- Tested for railway applications

Commercial Data

Item number	3248117
Packing unit	1 pc
Minimum order quantity	50 pc
Sales Key	BE22
Product Key	BE2261
Catalog Page	Page 278 (C-1-2019)
GTIN	4046356802154
Weight per Piece (including packing)	3.341 g
Weight per Piece (excluding packing)	3.341 g
Customs tariff number	85369010
Country of origin	PL

MPT 1,5/S/1P-PE - Mini ground terminal block



3248117

<https://www.phoenixcontact.com/us/products/3248117>

Technical Data

Product properties

Product type	Ground terminal block
Area of application	Railway industry
	Machine building
	Plant engineering
Number of connections	2
Number of rows	1

Insulation characteristics

Overvoltage category	III
Degree of pollution	3

Electrical properties

Rated surge voltage	6 kV
Maximum power dissipation for nominal condition	0.56 W

Connection data

Grounding foot	Yes
Number of connections per level	2
Nominal cross section	1.5 mm ²

1 level

Note	Please observe the current carrying capacity of the DIN rails.
Stripping length	8 mm ... 10 mm
Internal cylindrical gage	A1 / B1
Connection in acc. with standard	IEC 61984
Conductor cross section solid	0.14 mm ² ... 1.5 mm ²
Cross section AWG	26 ... 14 (converted acc. to IEC)
Conductor cross section flexible	0.14 mm ² ... 1.5 mm ²
Conductor cross section, flexible [AWG]	26 ... 14 (converted acc. to IEC)
Flexible conductor cross section flexible (Ferrules without plastic sleeve)	0.14 mm ² ... 1.5 mm ²
Flexible conductor cross section (ferrule with plastic sleeve)	0.14 mm ² ... 1 mm ²

1 level Connection cross sections directly pluggable

Conductor cross section solid	0.25 mm ² ... 1.5 mm ²
Flexible conductor cross section flexible (Ferrules without plastic sleeve)	0.34 mm ² ... 1.5 mm ²
Flexible conductor cross section (ferrule with plastic sleeve)	0.34 mm ² ... 1 mm ²

Dimensions

Width	3.5 mm
End cover width	2.2 mm

MPT 1,5/S/1P-PE - Mini ground terminal block



3248117

<https://www.phoenixcontact.com/us/products/3248117>

Height NS 15	28.1 mm
Length	33.55 mm

Material specifications

Color	green-yellow
Flammability rating according to UL 94	V0
Insulating material group	I
Insulating material	PA
Static insulating material application in cold	-60 °C
Temperature index of insulation material (DIN EN 60216-1 (VDE 0304-21))	130 °C
Relative insulation material temperature index (Elec., UL 746 B)	130 °C
Fire protection for rail vehicles (DIN EN 45545-2) R22	HL 1 - HL 3
Fire protection for rail vehicles (DIN EN 45545-2) R23	HL 1 - HL 3
Fire protection for rail vehicles (DIN EN 45545-2) R24	HL 1 - HL 3
Fire protection for rail vehicles (DIN EN 45545-2) R26	HL 1 - HL 3
Calorimetric heat release NFPA 130 (ASTM E 1354)	28 MJ/kg
Surface flammability NFPA 130 (ASTM E 162)	passed
Specific optical density of smoke NFPA 130 (ASTM E 662)	passed
Smoke gas toxicity NFPA 130 (SMP 800C)	passed

Mechanical properties

Mechanical data

Open side panel	Yes
-----------------	-----

Environmental and real-life conditions

Oscillation/broadband noise

Specification	DIN EN 50155 (VDE 0115-200):2008-03
Spectrum	Service life test category 1, class B, body mounted
Frequency	$f_1 = 5 \text{ Hz}$ to $f_2 = 150 \text{ Hz}$
ASD level	0.964 (m/s ²)/Hz
Acceleration	0.58g
Test duration per axis	5 h
Test directions	X-, Y- and Z-axis
Result	Test passed

Shocks

Specification	DIN EN 50155 (VDE 0115-200):2008-03
Pulse shape	Half-sine
Acceleration	5g
Shock duration	30 ms
Number of shocks per direction	3
Test directions	X-, Y- and Z-axis (pos. and neg.)
Result	Test passed

MPT 1,5/S/1P-PE - Mini ground terminal block



3248117

<https://www.phoenixcontact.com/us/products/3248117>

Ambient conditions

Ambient temperature (operation)	-60 °C ... 105 °C (max. short-term operating temperature RTI Elec.)
Ambient temperature (storage/transport)	-25 °C ... 60 °C (for a short time, not exceeding 24 h, -60 °C to +70 °C)
Ambient temperature (assembly)	-5 °C ... 70 °C
Ambient temperature (actuation)	-5 °C ... 70 °C
Permissible humidity (storage/transport)	30 % ... 70 %

Standards and regulations

Connection in acc. with standard	IEC 61984
----------------------------------	-----------

Mounting

Mounting type	NS 15
---------------	-------

MPT 1,5/S/1P-PE - Mini ground terminal block

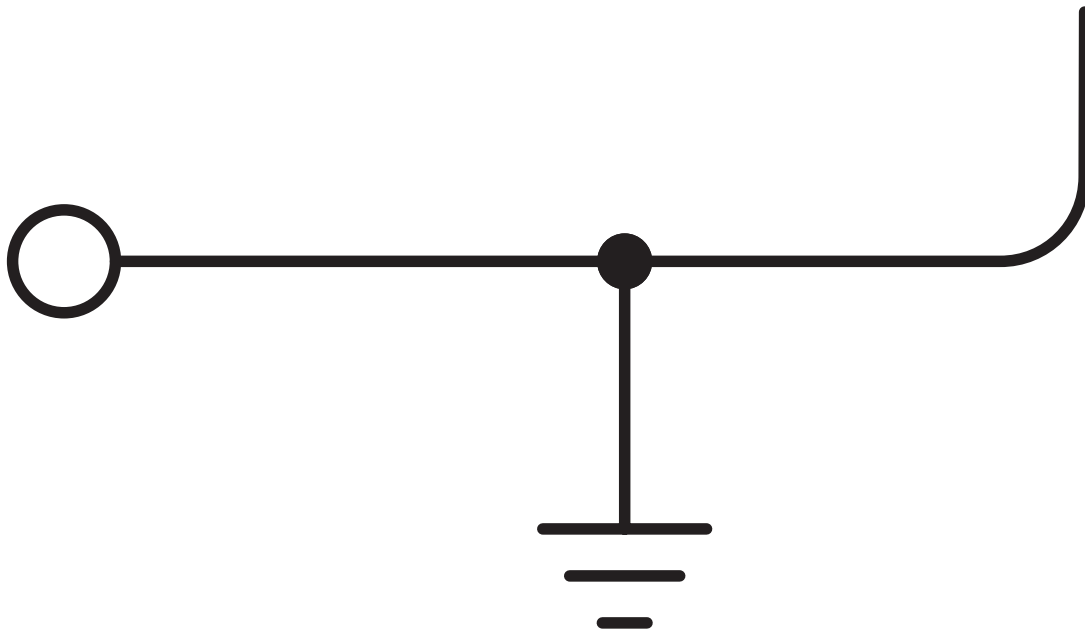


3248117

<https://www.phoenixcontact.com/us/products/3248117>

Drawings

Circuit diagram



MPT 1,5/S/1P-PE - Mini ground terminal block



3248117

<https://www.phoenixcontact.com/us/products/3248117>

Approvals



CSA

Approval ID: 13631



EAC

Approval ID: RU C-DE.BL08.B.00644



cULus Recognized

Approval ID: E60425

MPT 1,5/S/1P-PE - Mini ground terminal block



3248117

<https://www.phoenixcontact.com/us/products/3248117>

Classifications

ECLASS

ECLASS-10.0.1	27141141
ECLASS-11.0	27141141

ETIM

ETIM 8.0	EC000901
----------	----------

UNSPSC

UNSPSC 21.0	39121400
-------------	----------

MPT 1,5/S/1P-PE - Mini ground terminal block



3248117

<https://www.phoenixcontact.com/us/products/3248117>

Environmental Product Compliance

China RoHS	Environmentally friendly use period: unlimited = EFUP-e
	No hazardous substances above threshold values

MPT 1,5/S/1P-PE - Mini ground terminal block



3248117

<https://www.phoenixcontact.com/us/products/3248117>

Accessories

D-MPT 1,5/S - End cover

3248120

<https://www.phoenixcontact.com/us/products/3248120>

End cover, length: 33.6 mm, width: 2.2 mm, height: 22.3 mm, color: gray



SZF 0-0,4X2,5 - Screwdriver

1204504

<https://www.phoenixcontact.com/us/products/1204504>

Actuation tool, for ST terminal blocks, also suitable for use as a bladed screwdriver, size: 0.4 x 2.5 x 75 mm, 2-component grip, with non-slip grip



MPT 1,5/S/1P-PE - Mini ground terminal block

3248117

<https://www.phoenixcontact.com/us/products/3248117>



ATP-MBK - Partition plate

1413227

<https://www.phoenixcontact.com/us/products/1413227>



Partition plate, length: 42.5 mm, width: 2.5 mm, height: 30.5 mm, color: gray

ST-BW 0 - Actuation tool

1200135

<https://www.phoenixcontact.com/us/products/1200135>



Actuation tool, for all 1.5 mm² spring cages from PT 1,5/S and FT 1,5/S

MPT 1,5/S/1P-PE - Mini ground terminal block

3248117

<https://www.phoenixcontact.com/us/products/3248117>



MPS-MT 1-S4-B RD - Accessories

1982800

<https://www.phoenixcontact.com/us/products/1982800>

Test plug terminal block, Accessories



AI-S 1 - 8 TQ - Ferrule

1200293

<https://www.phoenixcontact.com/us/products/1200293>

Ferrule, S-Slimline, sleeve length: 8 mm, length: 14.5 mm, color: turquoise



MPT 1,5/S/1P-PE - Mini ground terminal block

3248117

<https://www.phoenixcontact.com/us/products/3248117>



NS 15 UNPERF 2000MM VPE 10 - DIN rail, unperforated

1401695

<https://www.phoenixcontact.com/us/products/1401695>



DIN rail, unperforated, acc. to EN 60715, material: Steel, galvanized, passivated with a thick layer, Standard profile, color: silver, Pack of 10 (20 m)

NS 15 PERF 2000MM VPE 10 - DIN rail perforated

1401682

<https://www.phoenixcontact.com/us/products/1401682>



DIN rail perforated, acc. to EN 60715, material: Steel, galvanized, passivated with a thick layer, Standard profile, color: silver, Pack of 10 (20 m)

MPT 1,5/S/1P-PE - Mini ground terminal block

3248117

<https://www.phoenixcontact.com/us/products/3248117>



NS 15 AL PERF 2000MM VPE 10 - DIN rail perforated

1401763

<https://www.phoenixcontact.com/us/products/1401763>



DIN rail perforated, acc. to EN 60715, material: Aluminum, uncoated, Standard profile, color: silver, Pack of 10 (20 m)

NS 15 WH PERF 2000MM-VPE 10 - DIN rail perforated

1204096

<https://www.phoenixcontact.com/us/products/1204096>



DIN rail perforated, acc. to EN 60715, material: Steel, Galvanized, white passivated, Standard profile, color: silver, Pack of 10 (20 m)

MPT 1,5/S/1P-PE - Mini ground terminal block

3248117

<https://www.phoenixcontact.com/us/products/3248117>



CLIPFIX 15 - End clamp

3022263

<https://www.phoenixcontact.com/us/products/3022263>

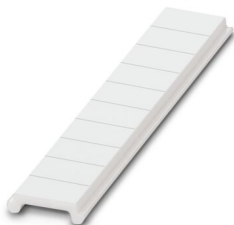


Snap-on end bracket, to be snapped onto NS 15 DIN rail

ZBF 3,5:UNBEDRUCKT - Zack Marker strip, flat

0829392

<https://www.phoenixcontact.com/us/products/0829392>



Zack Marker strip, flat, Strip, white, unlabeled, can be labeled with: PLOTMARK, CMS-P1-PLOTTER, mounting type: snapped, for terminal block width: 3.5 mm, lettering field size: 3.5 x 5.2 mm, Number of individual labels: 10

MPT 1,5/S/1P-PE - Mini ground terminal block

3248117

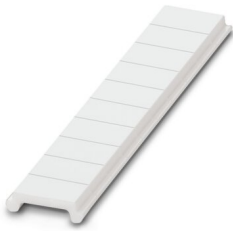
<https://www.phoenixcontact.com/us/products/3248117>



ZBF 3,5 CUS - Zack Marker strip, flat

0829394

<https://www.phoenixcontact.com/us/products/0829394>



Zack Marker strip, flat, can be ordered: Strip, white, labeled according to customer specifications, mounting type: snap into flat marker groove, for terminal block width: 3.5 mm, lettering field size: 3.5 x 5.2 mm, Number of individual labels: 10

ZBF 3,5,LGS:FORTL.ZAHLEN - Zack Marker strip, flat

0801406

<https://www.phoenixcontact.com/us/products/0801406>



Zack Marker strip, flat, Strip, white, labeled, printed horizontally: consecutive numbers 1 ... 10, 11 ... 20, etc. up to 91 ... 100, mounting type: snapped, for terminal block width: 3.5 mm, lettering field size: 5.15 x 3.5 mm, Number of individual labels: 10

MPT 1,5/S/1P-PE - Mini ground terminal block

3248117

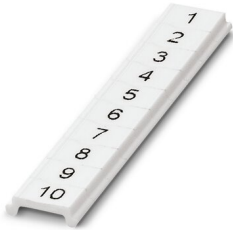
<https://www.phoenixcontact.com/us/products/3248117>



ZBF 3,5,QR:FORTL.ZAHLEN - Zack Marker strip, flat

0801407

<https://www.phoenixcontact.com/us/products/0801407>



Zack Marker strip, flat, Strip, white, labeled, Printed vertically: consecutive numbers 1 ... 10, 11 ... 20, etc. up to 91 ... 100, mounting type: snapped, for terminal block width: 3.5 mm, lettering field size: 5.15 x 3.5 mm, Number of individual labels: 10

UCT-TMF 3,5 - Marker for terminal blocks

0829486

<https://www.phoenixcontact.com/us/products/0829486>



Marker for terminal blocks, Sheet, white, unlabeled, can be labeled with: TOPMARK NEO, TOPMARK LASER, BLUEMARK ID COLOR, BLUEMARK ID, BLUEMARK CLED, THERMOMARK PRIME, THERMOMARK CARD 2.0, THERMOMARK CARD, mounting type: snapped, for terminal block width: 3.5 mm, lettering field size: 2.7 x 4.7 mm, Number of individual labels: 108

MPT 1,5/S/1P-PE - Mini ground terminal block

3248117

<https://www.phoenixcontact.com/us/products/3248117>



UCT-TMF 3,5 CUS - Marker for terminal blocks

0829644

<https://www.phoenixcontact.com/us/products/0829644>



Marker for terminal blocks, can be ordered: by sheet, white, labeled according to customer specifications, mounting type: snap into flat marker groove, for terminal block width: 3.5 mm, lettering field size: 2.7 x 4.7 mm, Number of individual labels: 108

MPS-MT - Test plugs

0201744

<https://www.phoenixcontact.com/us/products/0201744>



Test plugs, with solder connection up to 1 mm² conductor cross section, color: gray

MPT 1,5/S/1P-PE - Mini ground terminal block

3248117

<https://www.phoenixcontact.com/us/products/3248117>



MPS-IH WH - Insulating sleeve

0201663

<https://www.phoenixcontact.com/us/products/0201663>

Insulating sleeve, color: white



MPS-IH RD - Insulating sleeve

0201676

<https://www.phoenixcontact.com/us/products/0201676>

Insulating sleeve, color: red



MPT 1,5/S/1P-PE - Mini ground terminal block

3248117

<https://www.phoenixcontact.com/us/products/3248117>

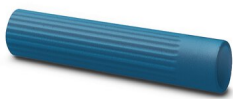


MPS-IH BU - Insulating sleeve

0201689

<https://www.phoenixcontact.com/us/products/0201689>

Insulating sleeve, color: blue



MPS-IH YE - Insulating sleeve

0201692

<https://www.phoenixcontact.com/us/products/0201692>

Insulating sleeve, color: yellow



MPT 1,5/S/1P-PE - Mini ground terminal block

3248117

<https://www.phoenixcontact.com/us/products/3248117>



MPS-IH GN - Insulating sleeve

0201702

<https://www.phoenixcontact.com/us/products/0201702>

Insulating sleeve, color: green



MPS-IH GY - Insulating sleeve

0201728

<https://www.phoenixcontact.com/us/products/0201728>

Insulating sleeve, color: gray



MPT 1,5/S/1P-PE - Mini ground terminal block

3248117

<https://www.phoenixcontact.com/us/products/3248117>



MPS-IH BK - Insulating sleeve

0201731

<https://www.phoenixcontact.com/us/products/0201731>

Insulating sleeve, color: black



PROJECT COMPLETE - Software

1050453

<https://www.phoenixcontact.com/us/products/1050453>



Intuitive planning and marking software for configuring terminal strips and for professional marking of marking materials for terminal blocks, conductors, cables, devices, and systems. The software is available for download

MPT 1,5/S/1P-PE - Mini ground terminal block

3248117

<https://www.phoenixcontact.com/us/products/3248117>

PP-H 1,5/S/1 - Plug

3212484

<https://www.phoenixcontact.com/us/products/3212484>



Plug, nom. voltage: 500 V, nominal current: 17.5 A, connection method: Push-in connection, 1 level, Rated cross section: 1.5 mm², cross section: 0.14 mm² - 1.5 mm², mounting type: Plug-in mounting, color: gray

PP-H 1,5/S/1 BU - Plug

3212497

<https://www.phoenixcontact.com/us/products/3212497>



Plug, nom. voltage: 500 V, nominal current: 17.5 A, connection method: Push-in connection, 1 level, Rated cross section: 1.5 mm², cross section: 0.14 mm² - 1.5 mm², color: blue

MPT 1,5/S/1P-PE - Mini ground terminal block

3248117

<https://www.phoenixcontact.com/us/products/3248117>

PP-H 1,5/S/1 GNYE - Plug

3212507

<https://www.phoenixcontact.com/us/products/3212507>



Plug, nom. voltage: 500 V, nominal current: 17.5 A, connection method: Push-in connection, 1 level, Rated cross section: 1.5 mm², cross section: 0.14 mm² - 1.5 mm², color: green-yellow

PP-H 1,5/S/2 - Plug

3212510

<https://www.phoenixcontact.com/us/products/3212510>



Plug, nom. voltage: 500 V, nominal current: 17.5 A, connection method: Push-in connection, 1 level, Rated cross section: 1.5 mm², cross section: 0.14 mm² - 1.5 mm², mounting type: Plug-in mounting, color: gray

MPT 1,5/S/1P-PE - Mini ground terminal block

3248117

<https://www.phoenixcontact.com/us/products/3248117>

PP-H 1,5/S/3 - Plug

3212523

<https://www.phoenixcontact.com/us/products/3212523>



Plug, nom. voltage: 500 V, nominal current: 17.5 A, connection method: Push-in connection, 1 level, Rated cross section: 1.5 mm², cross section: 0.14 mm² - 1.5 mm², mounting type: Plug-in mounting, color: gray

PP-H 1,5/S/4 - Plug

3212536

<https://www.phoenixcontact.com/us/products/3212536>



Plug, nom. voltage: 500 V, nominal current: 17.5 A, connection method: Push-in connection, 1 level, Rated cross section: 1.5 mm², cross section: 0.14 mm² - 1.5 mm², mounting type: Plug-in mounting, color: gray

MPT 1,5/S/1P-PE - Mini ground terminal block

3248117

<https://www.phoenixcontact.com/us/products/3248117>

PP-H 1,5/S/5 - Plug

3212549

<https://www.phoenixcontact.com/us/products/3212549>



Plug, nom. voltage: 500 V, nominal current: 17.5 A, connection method: Push-in connection, 1 level, Rated cross section: 1.5 mm², cross section: 0.14 mm² - 1.5 mm², mounting type: Plug-in mounting, color: gray

PP-H 1,5/S/6 - Plug

3212552

<https://www.phoenixcontact.com/us/products/3212552>



Plug, nom. voltage: 500 V, nominal current: 17.5 A, connection method: Push-in connection, 1 level, Rated cross section: 1.5 mm², cross section: 0.14 mm² - 1.5 mm², mounting type: Plug-in mounting, color: gray

MPT 1,5/S/1P-PE - Mini ground terminal block

3248117

<https://www.phoenixcontact.com/us/products/3248117>

PP-H 1,5/S/7 - Plug

3212565

<https://www.phoenixcontact.com/us/products/3212565>



Plug, nom. voltage: 500 V, nominal current: 17.5 A, connection method: Push-in connection, 1 level, Rated cross section: 1.5 mm², cross section: 0.14 mm² - 1.5 mm², color: gray

PP-H 1,5/S/8 - Plug

3212578

<https://www.phoenixcontact.com/us/products/3212578>



Plug, nom. voltage: 500 V, nominal current: 17.5 A, connection method: Push-in connection, 1 level, Rated cross section: 1.5 mm², cross section: 0.14 mm² - 1.5 mm², mounting type: Plug-in mounting, color: gray

MPT 1,5/S/1P-PE - Mini ground terminal block

3248117

<https://www.phoenixcontact.com/us/products/3248117>

PP-H 1,5/S/9 - Plug

3212581

<https://www.phoenixcontact.com/us/products/3212581>



Plug, nom. voltage: 500 V, nominal current: 17.5 A, connection method: Push-in connection, 1 level, Rated cross section: 1.5 mm², cross section: 0.14 mm² - 1.5 mm², color: gray

PP-H 1,5/S/10 - Plug

3212594

<https://www.phoenixcontact.com/us/products/3212594>



Plug, nom. voltage: 500 V, nominal current: 17.5 A, connection method: Push-in connection, 1 level, Rated cross section: 1.5 mm², cross section: 0.14 mm² - 1.5 mm², color: gray

MPT 1,5/S/1P-PE - Mini ground terminal block

3248117

<https://www.phoenixcontact.com/us/products/3248117>

PP-H 1,5/S/11 - Plug

3212604

<https://www.phoenixcontact.com/us/products/3212604>



Plug, nom. voltage: 500 V, nominal current: 17.5 A, connection method: Push-in connection, 1 level, Rated cross section: 1.5 mm², cross section: 0.14 mm² - 1.5 mm², color: gray

PP-H 1,5/S/12 - Plug

3212617

<https://www.phoenixcontact.com/us/products/3212617>



Plug, nom. voltage: 500 V, nominal current: 17.5 A, connection method: Push-in connection, 1 level, Rated cross section: 1.5 mm², cross section: 0.14 mm² - 1.5 mm², color: gray

MPT 1,5/S/1P-PE - Mini ground terminal block

3248117

<https://www.phoenixcontact.com/us/products/3248117>

PP-H 1,5/S/13 - Plug

3212620

<https://www.phoenixcontact.com/us/products/3212620>



Plug, nom. voltage: 500 V, nominal current: 17.5 A, connection method: Push-in connection, 1 level, Rated cross section: 1.5 mm², cross section: 0.14 mm² - 1.5 mm², color: gray

PP-H 1,5/S/14 - Plug

3212633

<https://www.phoenixcontact.com/us/products/3212633>



Plug, nom. voltage: 500 V, nominal current: 17.5 A, connection method: Push-in connection, 1 level, Rated cross section: 1.5 mm², cross section: 0.14 mm² - 1.5 mm², color: gray

MPT 1,5/S/1P-PE - Mini ground terminal block

3248117

<https://www.phoenixcontact.com/us/products/3248117>

PP-H 1,5/S/15 - Plug

3212646

<https://www.phoenixcontact.com/us/products/3212646>



Plug, nom. voltage: 500 V, nominal current: 17.5 A, connection method: Push-in connection, 1 level, Rated cross section: 1.5 mm², cross section: 0.14 mm² - 1.5 mm², color: gray

PP-H 1,5/S/1-L - Plug

3212659

<https://www.phoenixcontact.com/us/products/3212659>



Plug, nom. voltage: 500 V, nominal current: 17.5 A, connection method: Push-in connection, 1 level, Rated cross section: 1.5 mm², cross section: 0.14 mm² - 1.5 mm², color: gray

MPT 1,5/S/1P-PE - Mini ground terminal block

3248117

<https://www.phoenixcontact.com/us/products/3248117>

PP-H 1,5/S/1-L BU - Plug

3212662

<https://www.phoenixcontact.com/us/products/3212662>

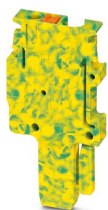


Plug, nom. voltage: 500 V, nominal current: 17.5 A, connection method: Push-in connection, 1 level, Rated cross section: 1.5 mm², cross section: 0.14 mm² - 1.5 mm², color: blue

PP-H 1,5/S/1-L GNYE - Plug

3212675

<https://www.phoenixcontact.com/us/products/3212675>



Plug, nom. voltage: 500 V, nominal current: 17.5 A, connection method: Push-in connection, 1 level, Rated cross section: 1.5 mm², cross section: 0.14 mm² - 1.5 mm², color: green-yellow

MPT 1,5/S/1P-PE - Mini ground terminal block

3248117

<https://www.phoenixcontact.com/us/products/3248117>

PP-H 1,5/S/1-M - Plug

3212688

<https://www.phoenixcontact.com/us/products/3212688>



Plug, nom. voltage: 500 V, nominal current: 17.5 A, connection method: Push-in connection, 1 level, Rated cross section: 1.5 mm², cross section: 0.14 mm² - 1.5 mm², color: gray

PP-H 1,5/S/1-M BU - Plug

3212691

<https://www.phoenixcontact.com/us/products/3212691>



Plug, nom. voltage: 500 V, nominal current: 17.5 A, connection method: Push-in connection, 1 level, Rated cross section: 1.5 mm², cross section: 0.14 mm² - 1.5 mm², color: blue

MPT 1,5/S/1P-PE - Mini ground terminal block

3248117

<https://www.phoenixcontact.com/us/products/3248117>

PP-H 1,5/S/1-M GNYE - Plug

3212701

<https://www.phoenixcontact.com/us/products/3212701>



Plug, nom. voltage: 500 V, nominal current: 17.5 A, connection method: Push-in connection, 1 level, Rated cross section: 1.5 mm², cross section: 0.14 mm² - 1.5 mm², color: green-yellow

PP-H 1,5/S/1-R - Plug

3212714

<https://www.phoenixcontact.com/us/products/3212714>



Plug, nom. voltage: 500 V, nominal current: 17.5 A, connection method: Push-in connection, 1 level, Rated cross section: 1.5 mm², cross section: 0.14 mm² - 1.5 mm², color: gray

MPT 1,5/S/1P-PE - Mini ground terminal block

3248117

<https://www.phoenixcontact.com/us/products/3248117>

PP-H 1,5/S/1-R BU - Plug

3212727

<https://www.phoenixcontact.com/us/products/3212727>



Plug, nom. voltage: 500 V, nominal current: 17.5 A, connection method: Push-in connection, 1 level, Rated cross section: 1.5 mm², cross section: 0.14 mm² - 1.5 mm², color: blue

PP-H 1,5/S/1-R GNYE - Plug

3212730

<https://www.phoenixcontact.com/us/products/3212730>



Plug, nom. voltage: 500 V, nominal current: 17.5 A, connection method: Push-in connection, 1 level, Rated cross section: 1.5 mm², cross section: 0.14 mm² - 1.5 mm², color: green-yellow

MPT 1,5/S/1P-PE - Mini ground terminal block

3248117

<https://www.phoenixcontact.com/us/products/3248117>



PZ 1,5/S/2 - Strain relief

3212918

<https://www.phoenixcontact.com/us/products/3212918>



Strain relief, length: 44.5 mm, width: 6.8 mm, number of positions: 2, color: black

PRZ 1,5/S - Latching

3212905

<https://www.phoenixcontact.com/us/products/3212905>



Latching, length: 59 mm, color: orange

MPT 1,5/S/1P-PE - Mini ground terminal block



3248117

<https://www.phoenixcontact.com/us/products/3248117>

PR 1,5/S/2 - Latching

3212895

<https://www.phoenixcontact.com/us/products/3212895>



Latching, length: 28.9 mm, width: 6.8 mm, number of positions: 2, color: orange

PR 1,5/S - Latching

3212882

<https://www.phoenixcontact.com/us/products/3212882>



Latching, length: 28.9 mm, width: 3.3 mm, number of positions: 1, color: orange

Phoenix Contact 2023 © - all rights reserved
<https://www.phoenixcontact.com>

Phoenix Contact USA
586 Fulling Mill Road
Middletown, PA 17057, United States
(+717) 944-1300
info@phoenixcon.com