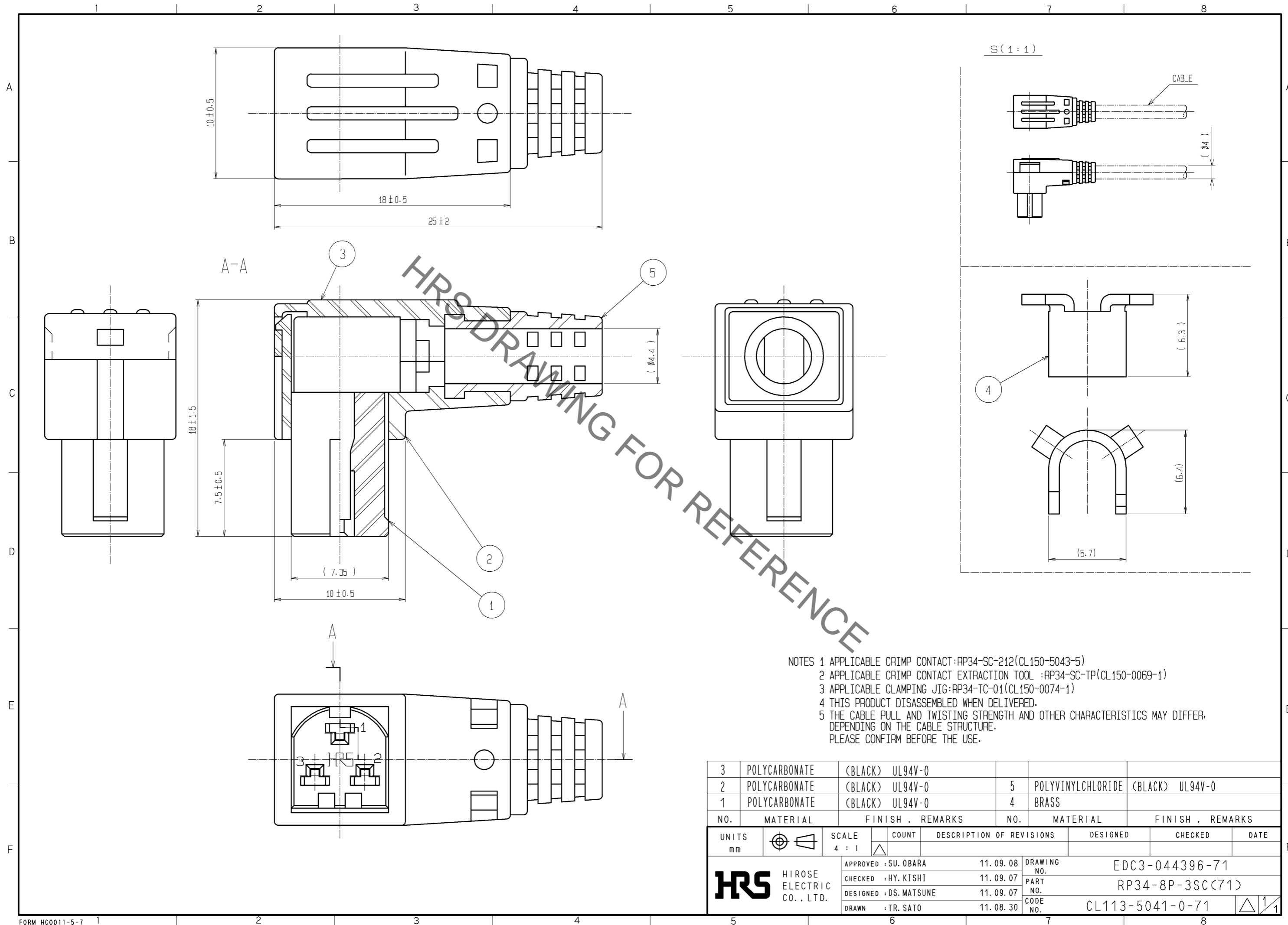


Jan.1.2022 Copyright 2022 HIROSE ELECTRIC CO., LTD. All Rights Reserved.  
In case of consideration for using Automotive equipment / device which demand high reliability, kindly contact our sales window correspondents.



NOTES 1 APPLICABLE CRIMP CONTACT:RP34-SC-212(CL150-5043-5)  
 2 APPLICABLE CRIMP CONTACT EXTRACTION TOOL :RP34-SC-TP(CL150-0069-1)  
 3 APPLICABLE CLAMPING JIG:RP34-TC-01(CL150-0074-1)  
 4 THIS PRODUCT DISASSEMBLED WHEN DELIVERED.  
 5 THE CABLE PULL AND TWISTING STRENGTH AND OTHER CHARACTERISTICS MAY DIFFER, DEPENDING ON THE CABLE STRUCTURE. PLEASE CONFIRM BEFORE THE USE.

3	POLYCARBONATE	(BLACK) UL94V-0					
2	POLYCARBONATE	(BLACK) UL94V-0	5	POLYVINYLCHLORIDE	(BLACK) UL94V-0		
1	POLYCARBONATE	(BLACK) UL94V-0	4	BRASS			
NO.	MATERIAL	FINISH . REMARKS	NO.	MATERIAL	FINISH . REMARKS		
UNITS	mm	SCALE	4 : 1	COUNT	DESCRIPTION OF REVISIONS	DESIGNED	CHECKED
				APPROVED : SU. OBARA	11. 09. 08	DRAWING NO. EDC3-044396-71	
				CHECKED : HY. KISHI	11. 09. 07	PART NO. RP34-8P-3SC(71)	
				DESIGNED : DS. MATSUNE	11. 09. 07	CODE NO. CL113-5041-0-71	
				DRAWN : TR. SATO	11. 08. 30	1/1	

# Mouser Electronics

Authorized Distributor

Click to View Pricing, Inventory, Delivery & Lifecycle Information:

[Hirose Electric:](#)

[RP34-8P-3SC\(71\)](#)