

**BA**

**End stops**

The end stops are mounted at the extremity of the terminal board assembly, giving additional support to the terminal blocks as markers. For various types of marking, refer to the marker section.

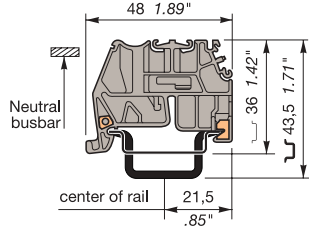
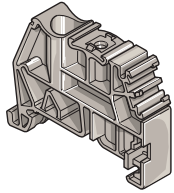
**BADL**

Screwless, snaps on rail without tool. V0 grey polyamide for DIN 3 rail. Maintained in place and locked on the rail with metal grips.

To reposition, do not slide on the rail. Withdraw and snap again (screwdriver DIA. 6,5 mm .256" max.)

Thickness: 9 mm .354"

**BADL** grey **0199 408.02**



**BAM**

Multi-rail end stop of grey V2 or V0 polyamide equipped with 2 blocking screws allows mounting on PR1, PR3, PR4 and PR5 (DIN 1, DIN 3) rails.

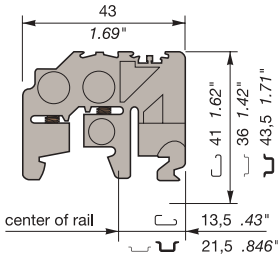
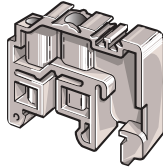
Recommended screwdriver: DIA. 5,5 mm .217"

Recommended torque:

Min. 0,8 mN - Max. 1 mN

Min. 7.1 lb.in - Max. 8.9 lb.in

Thickness: 9,1 mm .358"



**BAM** grey **0103 002.26**

**BAM V0** beige **0199 306.03**

**BAMH**

Multi-rail end stop of V2 or V0 polyamide equipped with 2 blocking screws allows mounting on PR1, PR3, PR4 and PR5 (DIN 1, DIN 3) rails.

Suitable for double deck blocks.

Recommended screwdriver:

DIA. 5,5 mm .217"

Recommended torque:

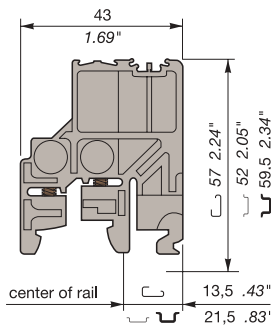
Min. 0,8 mN - Max. 1 mN

Min. 7.1 lb.in - Max. 8.9 lb.in

Thickness: 9,1 mm .358"

**BAMH** grey **0114 836.00**

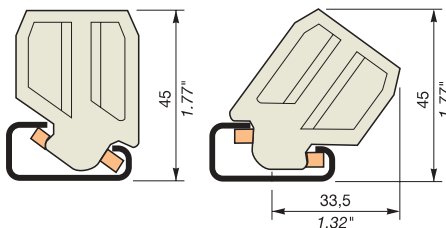
**BAMH V0** beige **0194 836.01**



**BAR**

Reversible end stop of beige polyamide with blocking bracket. To be mounted vertically or at a 30° angle, on PR1 rail only.

Thickness: 10 mm .394"



**BAR** beige **0164 519.24**

**BADH, BAEH**

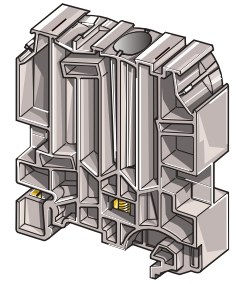
Tall end stop of polyamide, for use with M 70/22, M 95/26 blocks, power blocks, double or triple deck blocks, and electronic interface modules series 7 000, 8 000, 10 000, 11 000 and 30 000.

Snaps on rail - Easy mounting and repositioning, even between 2 blocks.

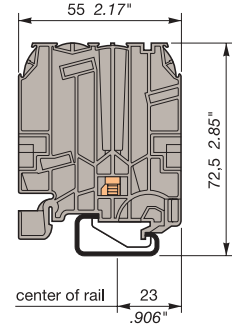
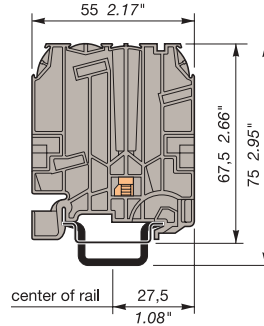
Recommended screwdriver: DIA. 5,5 mm .217"

Recommended torque: Min. 1,2 Nm - Max. 1,4 Nm

Min. 10.6 lb.in - Max. 12.3 lb.in



Thickness: 12 mm .472"



**BADH** grey **0116 900.27**

**BAEH** grey **0116 934.04**

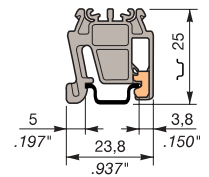
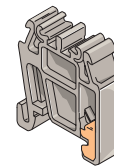
**BAEH** beige **0196 934.05**

**BADRL**

End stop of V0 grey polyamide snaps on DIN 2 rail, automatically maintained in place with metal grips.

To reposition, do not slide on the rail. Withdraw and snap again (screwdriver DIA. 4 mm .157" max.)

Thickness: 6,5 mm .256"



**BADRL** grey **0199 420.21**

**BAH11**



To be mounted on symmetrical rail type 1 12,2 x 5,1 mm .480 x .201", according to NFC 93 461 standard.

Thickness: 7,1 mm .280"

**BAH11** **0164 659.10**

**BAH21**



To be mounted on strengthened symmetrical rail type 2 only: 21,8 x 8,2 mm .858 x .323", according to NFC 93 461 standard.

Thickness: 7,1 mm .280"

**BAH21** **0167 489.22**

**BAH22**

To be mounted on strengthened symmetrical rail type 2 only 21,8 x 8,2 mm .858 x .323", according to NFC 93 461 standard.

Thickness: 7,1 mm .280"

**BAH22** **0164 655.04**



**BAH24**

To be mounted on strengthened symmetrical rail type 2 only 21,8 x 8,2 mm .858 x .323", according to NFC 93 461 standard.

Thickness: 7,1 mm .280"

**BAH24** **0168 355.13**

