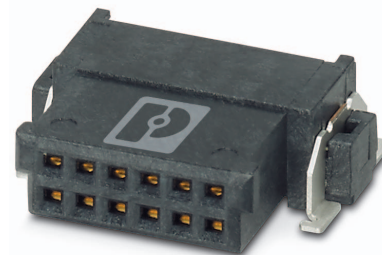


Data sheet

Order No.: 1714869

Type: FP 1,27/ 12-FH

SMD female connector, Reflow soldering



The figure shows a 12-pos. version with 12 contacts

1 Main features



- | | | | |
|----------------|--------------|------------------------|-----------------|
| • No. of pos. | 12 | • Nominal current | 1.4 A |
| • Test voltage | 500 V AC | • Mounting type | SMD soldering |
| • Color | black (9005) | • Connection direction | 0 ° |
| • Pitch | 1.27 mm | • Type of packaging | 24 mm wide tape |

2 Your advantages

- ✓ Gold-plated contacts ensure transfer quality remains stable over the long term
- ✓ Compact, high-position board-to-board or wire-to-board connectors for space-saving device designs
- ✓ Stacked, coplanar or orthogonal PCB connections enable maximum flexibility in the device
- ✓ Male and female connectors of different height can be combined – for individual PCB spacing of 8 mm ... 13.8 mm



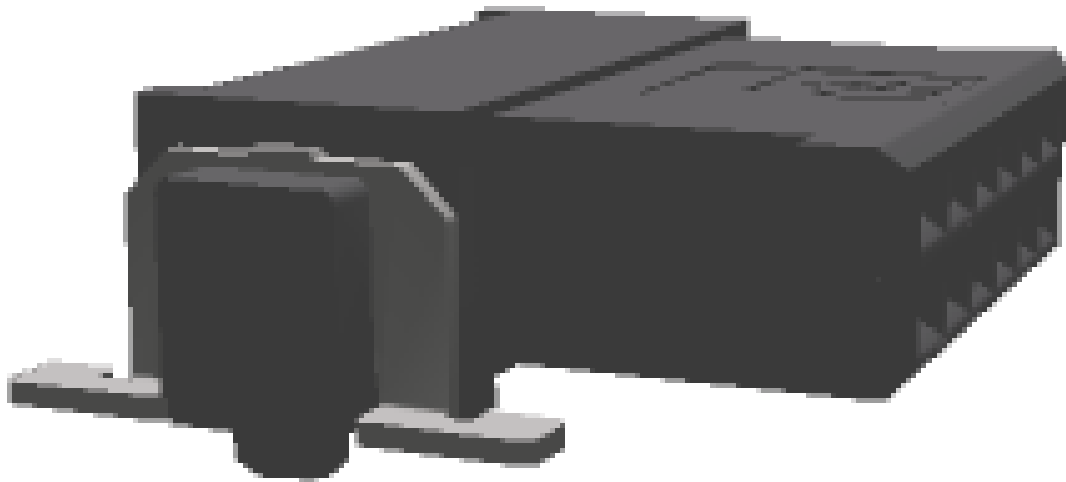
Make sure you always use the latest documentation.

It can be downloaded at: phoenixcontact.net/product/1714869

3 Table of contents

1	Main features.....	1
2	Your advantages	1
3	Table of contents	2
4	3D model in PDF can be activated (Acrobat Reader only).....	3
5	General Technical Data	4
	5.1 item properties	4
	5.2 Material data	4
6	Dimensions.....	5
	6.1 Dimensions for the product	5
	6.2 Dimensions for the application	5
7	Series drawing.....	6
8	Packaging information	7
9	Blister drawing.....	8
10	Application.....	9
	10.1 Temperature limit values	9
11	General tests	10
	11.1 Specification.....	10
12	Mechanical tests.....	11
	12.1 Insertion and withdrawal force per contact	11
	12.2 Service life	11
13	Electrical tests	12
	13.1 Electrical data	12
	13.2 Air and creepage distances	12
14	Current carrying capacity/derating curves	13
	14.1 Insulation resistance.....	13
	14.2 forward resistance	14
	14.3 Vibration test	14
15	Approvals	14
16	Commercial Data.....	15
17	Combination tests.....	16

4 3D model in PDF can be activated (Acrobat Reader only)



1714869 FP 1,27/ 12-FH**5 General Technical Data****5.1 item properties**

Order No.	1714869
Type	FP 1,27/ 12-FH
Plug-in system	Fine Pitch 1,27 mm
Product type	SMD female connector
Type of contact	Female connector
Range of articles	FP 1,27/...-FH
Pitch	1.27 mm
Range of positions	12...80
Number of positions	12
Number of levels	2
Number of potentials	12
Mounting type	SMD soldering
Connection direction of the connector to the PCB	0 °
Pin layout	Linear pad geometry

5.2 Material data

Material of metal parts	
Note	WEEE/RoHS-compliant, whisker-free acc. to IEC 60068-2-82/JEDEC JESD 201
Contact material	Cu alloy
Surface contact area	Nickel (Ni), Palladium nickel (PdNi) , Gold (Au)
Surface characteristics	Selective coating
Insulating material data	
Insulating material	LCP
Insulating material group	IIIa
CTI according to IEC 60112	175
Flammability rating according to UL 94	V0
Color	black (9005)

1714869 FP 1,27/ 12-FH**6 Dimensions****6.1 Dimensions for the product**

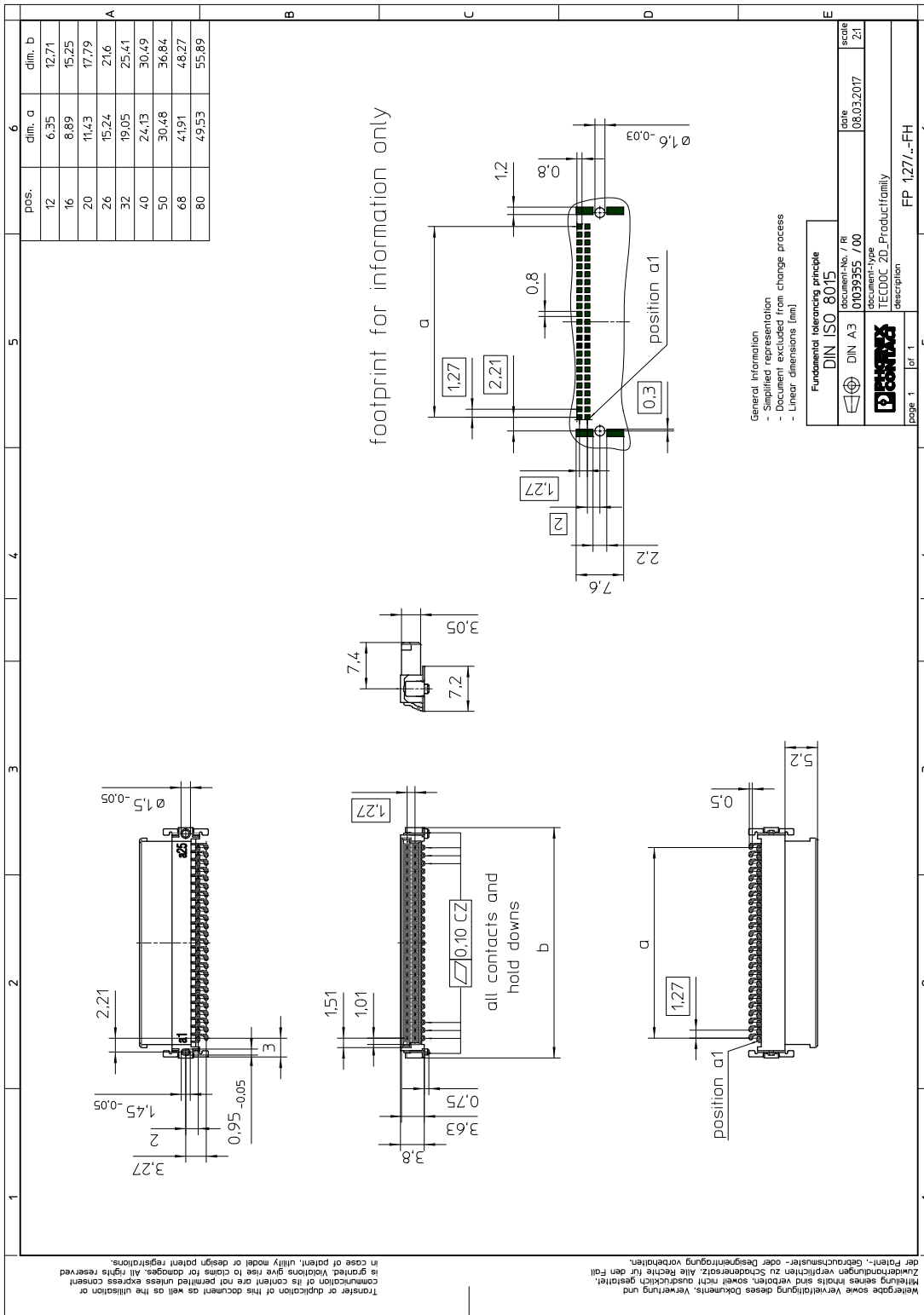
Length	7.2 mm
Width	12.71 mm
Total height	4.55 mm
Height	3.8 mm
Positioning pin geometry	ø 1.5-0.05 mm, Length of positioning pin: 0.75 mm ø 1.5-0.05 mm, Length of positioning pin: 0.75 mm
Positioning pin geometry	ø 1.5-0.05 mm, Length of positioning pin: 0.75 mm ø 1.5-0.05 mm, Length of positioning pin: 0.75 mm
Coplanarity	≤ 0.1 mm

6.2 Dimensions for the application

Contact cover	0.9 mm
Overlap length	1.5 mm
Medium offset	± 0.7 mm in longitudinal and transverse direction
Angular tolerance	± 4 ° in longitudinal direction
Angular tolerance	± 2 ° in transverse direction

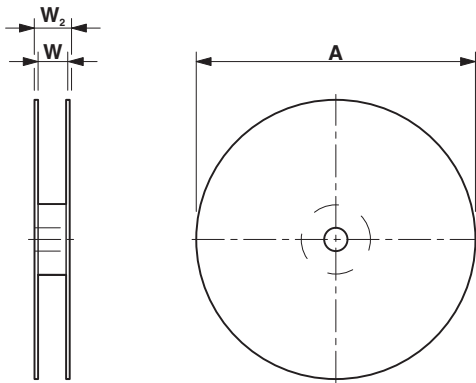
1714869 FP 1,27/ 12-FH

7 Series drawing



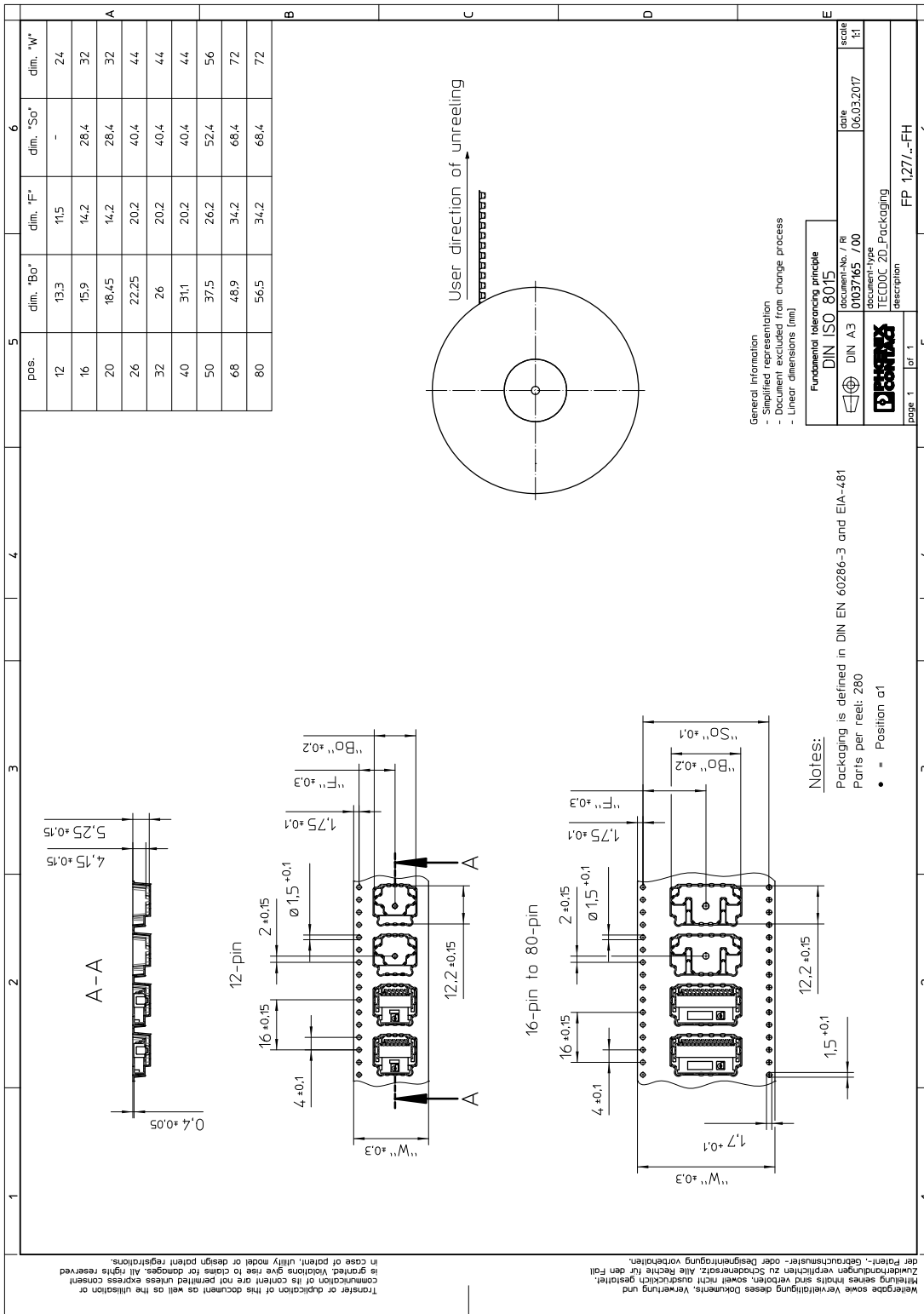
1714869 FP 1,27/ 12-FH**8 Packaging information**

Type of packaging	24 mm wide tape
Note on packaging	Tape-on-reel packaging in accordance with standard DIN EN 60286-3 and EIA-481
Pieces per package	560
Outer packaging type	Transparent-Bag
[W] tape width	24 mm
[A] coil diameter	330 mm
[W2] coil overall dimension	30.4 mm
Number of products per coil	560



1714869 FP 1,27/ 12-FH

9 Blister drawing



10 Application

10.1 Temperature limit values

Ambient temperature (storage/transport)	-40 °C ... 70 °C
Ambient temperature (assembly)	-5 °C ... 100 °C
Ambient temperature (operation)	-55 °C ... 125 °C

1714869 FP 1,27/ 12-FH

11 General tests

11.1 Specification

Brief description	Board-to-board connectors
-------------------	---------------------------

1714869 FP 1,27/ 12-FH**12 Mechanical tests****12.1 Insertion and withdrawal force per contact**

Insertion and withdrawal force per contact	approx. 0.5 N
--	---------------

12.2 Service life

Specification	IEC 60512-9-1:2010-03 (following)
Service life	500 Insertion/withdrawal cycles, Performance level 1

1714869 FP 1,27/ 12-FH**13 Electrical tests****13.1 Electrical data**

Nominal current at 20 °C	1.4 A IEC 60512-5-2:2002-02 (50-pos.)
Test voltage	500 V AC IEC 60512-4-1:2003

13.2 Air and creepage distances

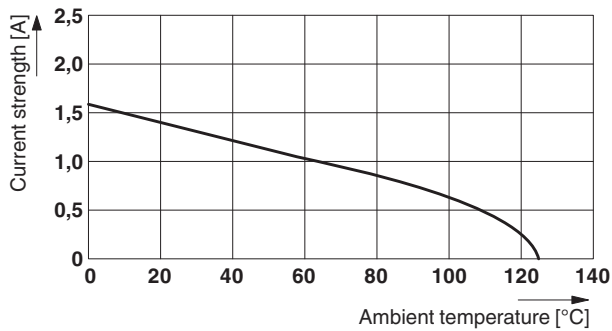
Minimum value for clearance and creepage distance	0.4 mm
---	--------

1714869 FP 1,27/ 12-FH

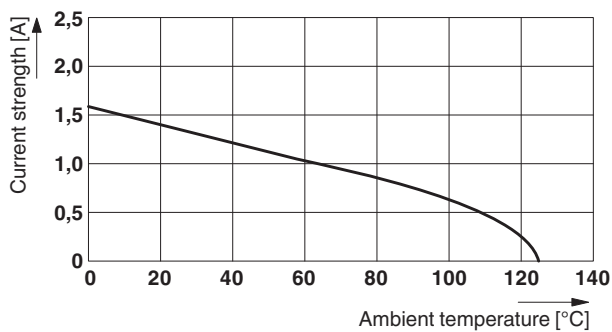
14 Current carrying capacity/derating curves

Specification	IEC 60512-5-2:2002-02
Note	Representation based on IEC 60512-5-2:2002-02
Reduction factor	0.8
Number of positions	See diagram

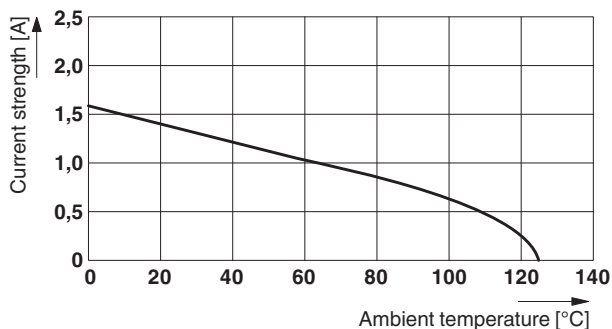
Type: FP 1,27/...-FH with FP 1,27/...-MH



Type: FP 1,27/...-FH with FP 1,27/...-MV 1,75



Type: FP 1,27/...-FH with FP 1,27/...-MV 3,25



14.1 Insulation resistance

Insulation resistance	$\geq 10 \text{ G}\Omega$, (IEC 60512-3-1:2002-02)
-----------------------	---

1714869 FP 1,27/ 12-FH**14.2 forward resistance**

Contact resistance	≤25 mΩ, (IEC 60512-2-1:2002-02)
--------------------	---------------------------------

14.3 Vibration test

Specification	IEC 60068-2-6:2007-12
---------------	-----------------------

Result	Test passed
--------	-------------

Frequency	10 - 2000 - 10 Hz
-----------	-------------------

Sweep speed	1 octave/min
-------------	--------------

Amplitude	1.5 mm (10 - 60.1 Hz)
-----------	-----------------------

Acceleration	20g (60.1 - 2000 Hz)
--------------	----------------------

Test duration per axis	2.5 h
------------------------	-------

Test directions	X-, Y- and Z-axis
-----------------	-------------------

Note

15 Approvals

cULus Recognized 



1714869 FP 1,27/ 12-FH**16 Commercial Data**

Order No.	1714869
Type	FP 1,27/ 12-FH
Pieces per package	560
Net weight	1.296 g
GTIN	4055626400723
	Information that applies locally, see link on page 1
Country of origin	Information that applies locally, see link on page 1

1714869 FP 1,27/ 12-FH

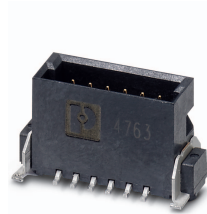
17 Combination tests



FP 1,27/...-FH



FP 1,27/...-MH

FP 1,27/...-MV
1,75FP 1,27/...-MV
3,25

Mechanical tests				
Insertion/withdrawal force per position	approx. 0.5 N / 0.5 N	approx. 0.5 N / 0.5 N	approx. 0.5 N / 0.5 N	
Durability tests				
Contact resistance R_1	25 m Ω	25 m Ω	25 m Ω	
Insertion/withdrawal cycles	500	500	500	
Contact resistance R_2	25 m Ω	25 m Ω	25 m Ω	
Test voltage	500 V AC	500 V AC	500 V AC	
Thermal tests				
Tested number of positions	50	50	50	
Test current	1.4 A	1.4 A	1.4 A	