

VSSC4 TAZ 24VAC/DC

Weidmüller Interface GmbH & Co. KG

Klingenbergstraße 26

D-32758 Detmold

Germany

www.weidmueller.com



Surge protection with individual components

- With suppressor diodes

Suppressor diodes work similarly as conventional Zener diodes. The diode becomes conductive within 10– 100ps after a certain breakdown voltage, set by the manufacturer, is exceeded. Compared to Zener diodes, suppressor diodes have a higher current-carrying capacity and a shorter reaction time.

General ordering data

| | |
|------------|--------------------------------------------------------------------------------------------------------------------------|
| Version | Surge protection for instrumentation and control, Surge protection for measurement and control, $U_p(L/N-PE)$ 70 V |
| Order No. | 1064080000 |
| Type | VSSC4 TAZ 24VAC/DC |
| GTIN (EAN) | 403224882949 1 |
| Qty. | 10 pc(s). |

Creation date May 19, 2022 12:06:04 PM CEST

Catalogue status 06.05.2022 / We reserve the right to make technical changes.

VSSC4 TAZ 24VAC/DC**Weidmüller Interface GmbH & Co. KG**

Klingenbergstraße 26

D-32758 Detmold

Germany

www.weidmueller.com

Technical data**Dimensions and weights**

| | | | |
|------------|---------|-----------------|------------|
| Depth | 58.5 mm | Depth (inches) | 2.303 inch |
| Height | 76 mm | Height (inches) | 2.992 inch |
| Width | 6.2 mm | Width (inches) | 0.244 inch |
| Net weight | 26 g | | |

Temperatures

| | | | |
|---------------------|----------------|-----------------------|----------------|
| Storage temperature | -40 °C...80 °C | Operating temperature | -40 °C...70 °C |
| Humidity | 5...96 % | | |

Probability of failure

| | | | |
|-----------|-------------|------------------------------------|-------|
| SIL PAPER | SIL Paper | SIL in compliance with IEC 61508 | 3 |
| MTTF | 3,567 Jahre | SFF | 100 % |
| λges | 32 | PFH in 1*10 ⁻⁹ per hour | 0 |

Environmental Product Compliance

| | |
|------------|----------------|
| REACH SVHC | Lead 7439-92-1 |
|------------|----------------|

Rated data UL

| | | | |
|----------------------|---------|----------------|---------------|
| Certificate No. (UL) | E311081 | UL certificate | UL Zertifikat |
|----------------------|---------|----------------|---------------|

CSA protection data

| | | | |
|------------------------------------------|------|----------------------------------------|------|
| Gas group C | IIB | Gas group D | IIA |
| Gas groups A, B | IIC | Input current, max. I _I | 20 A |
| Input voltage, max. U _i | 42 V | Internal capacity, max. C _i | 1 nF |
| Internal inductance, max. L _i | 0 μH | | |

General data

| | | | |
|--------------------|-------------------------------------------------|---------------------------|----------|
| Colour | black | Design | Terminal |
| Isolating function | No | Optical function display | No |
| Protection degree | IP20 | Rail | TS 35 |
| Segment | Measurement - Monitoring - Setting | UL 94 flammability rating | V-0 |
| Version | Surge protection for measurement and control | | |

Insulation coordination acc. to EN 50178

| | | | |
|--------------------|---|------------------------|-----|
| Pollution severity | 2 | Surge voltage category | III |
|--------------------|---|------------------------|-----|

VSSC4 TAZ 24VAC/DC

Weidmüller Interface GmbH & Co. KG

Klingenbergstraße 26

D-32758 Detmold

Germany

www.weidmueller.com

Technical data

Rated data IEC / EN

| | | | |
|------------------------------------------------|---------------|-----------------------------------------------------|--------------|
| Capacitance | 0.82 nF | Discharge current I_{\max} (8/20 μ s) wire-PE | 0.2 kA |
| Discharge current I_n (8/20 μ s) wire-PE | 0,1 kA | Discharge current, max. (8/20 μ s) | 0.2 kA |
| Max. continuous voltage, U_c (AC) | 30 V | Max. continuous voltage, U_c (DC) | 42 V |
| Number of poles | 1 | Overload - failure mode | Mode 1 |
| Protection level U_p (typ.) | 70 V | Rated current I_N | 20 A |
| Rated voltage (AC) | 24 V | Rated voltage (DC) | 34 V |
| Requirements category acc. to IEC 61643-21 | C3 | Standards | IEC 61643-21 |
| Surge current-carrying capacity C3 | 15 A | Voltage type | AC/DC |
| Volume resistance | <0.1 Ω | | |

Further details of approvals

| | |
|------------------|-----------------|
| GOST certificate | GOST-Zertifikat |
|------------------|-----------------|

Connection data

| | | | |
|------------------------------------------------------------|---------------------|------------------------------------------------------------|-------------------|
| Stripping length | 10 mm | Type of connection | Screw connection |
| Tightening torque, min. | 0.5 Nm | Tightening torque, max. | 0.8 Nm |
| Clamping range, min. | 0.5 mm ² | Clamping range, max. | 4 mm ² |
| Wire cross-section, solid, min. | 0.5 mm ² | Wire cross-section, solid, max. | 6 mm ² |
| Conductor cross-section, flexible, AEH (DIN 46228-1), min. | 0.5 mm ² | Conductor cross-section, flexible, AEH (DIN 46228-1), max. | 4 mm ² |
| Connection cross-section, stranded, min. | 0.5 mm ² | Connection cross-section, stranded, max. | 4 mm ² |

Ratings IECEx/ATEX/cUL

| | |
|-----------------|-----------------|
| cUL certificate | cUL Certificate |
|-----------------|-----------------|

Classifications

| | | | |
|-------------|-------------|-------------|-------------|
| ETIM 6.0 | EC000943 | ETIM 7.0 | EC000943 |
| ETIM 8.0 | EC000943 | ECLASS 9.0 | 27-13-08-07 |
| ECLASS 9.1 | 27-13-08-07 | ECLASS 10.0 | 27-13-08-07 |
| ECLASS 11.0 | 27-13-08-07 | ECLASS 12.0 | 27-17-90-90 |

VSSC4 TAZ 24VAC/DC

Weidmüller Interface GmbH & Co. KG

Klingenbergstraße 26

D-32758 Detmold

Germany

www.weidmueller.com

Technical data

Tender specification sheets

| Long specification | Feed-through terminal, 6.2 mm wide with suppressor diodes between the signal line connection and the mounting rail potential, TS 35 contact base. A signal with max. 32A can be protected here. When the terminal is fitted, a simultaneous electrically conducting contact is made between the mounting rail (earth) and the reference potential (ground) of the protection circuit in the terminal. Optical identification of the terminal based on the type of protected switching and the voltage level. The terminal can be labelled or marked. | Short specification |
|--------------------|------------------------------------------------------------------------------------------------------------------------------------------------------------------------------------------------------------------------------------------------------------------------------------------------------------------------------------------------------------------------------------------------------------------------------------------------------------------------------------------------------------------------------------------------------|------------------------------------------------------------------------------------------------------------------------------------------------------|
| | | Feed-through terminal with suppressor diode between the signal line connection and the mounting rail potential, TS 35 contact base. Version: 24 V UC |

Important note

| | |
|---------------------|---------------------------------------------------------------------------------------------------------------------------------------------------------------------|
| Product information | Mode 1: State where the voltage-limiting part of the SPD was disconnected. The voltage limiting function is no longer available, but the cable is still functional. |
|---------------------|---------------------------------------------------------------------------------------------------------------------------------------------------------------------|

Approvals

Approvals



| | |
|-----------------------|---------|
| ROHS | Conform |
| UL File Number Search | E311081 |

Downloads

| | |
|---------------------------------------------|------------------------------------------------------------------------------------------------------|
| Approval/Certificate/Document of Conformity | SIL Paper EU Konformitätserklärung / EU Declaration of Conformity |
| Engineering Data | CAD data – STEP |
| Engineering Data | EPLAN, WSCAD |
| User Documentation | Beipackzettel / Instruction sheet |
| Catalogues | Catalogues in PDF-format |
| Brochures | |

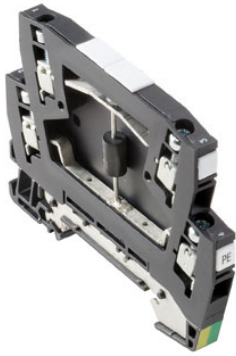
Data sheet

VSSC4 TAZ 24VAC/DC

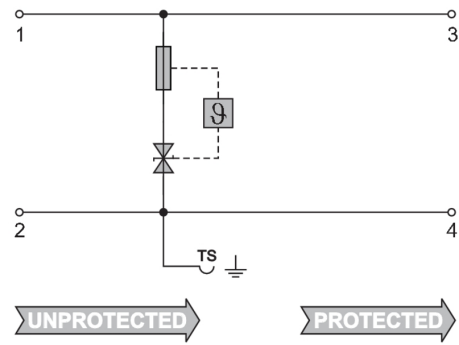
Weidmüller Interface GmbH & Co. KG
Klingenbergstraße 26
D-32758 Detmold
Germany

www.weidmueller.com

Drawings



Similar to illustration



Circuit diagram

