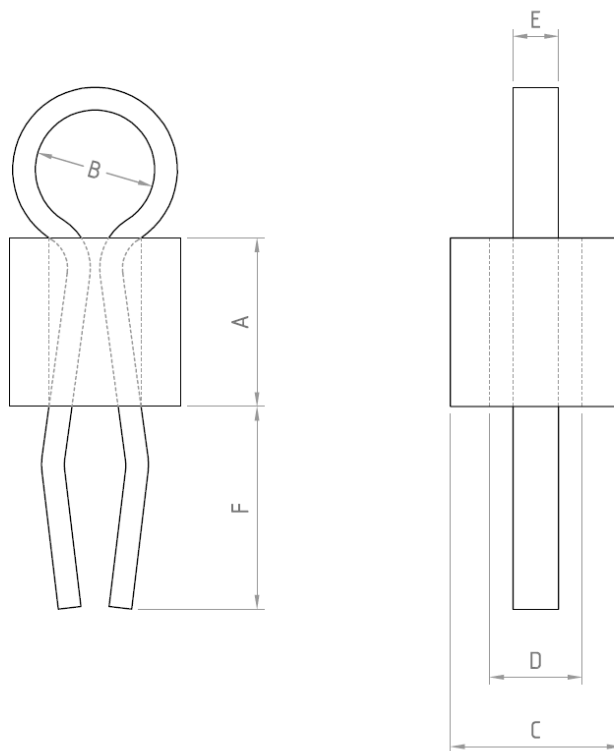


Datasheet

RS 1.32mm Yellow Terminal Post

RS Stock number [262-2056](#)

Dimensions: Figure Scale 10:1:





Dimensions	Type 100 (large)		Type 200 (small)		Type 300 (long legged)	
	<i>mm</i>	<i>inches</i>	<i>mm</i>	<i>inches</i>	<i>mm</i>	<i>inches</i>
A	2.84-3.10	0.112-0.122	3.05-3.30	0.120-0.130	2.84-3.10	0.112-0.122
B	2.03-2.16	0.080-0.085	1.30-1.50	0.051-0.059	2.03-2.16	0.080-0.085
C	2.87-3.12	0.113-0.123	2.21-2.47	0.087-0.097	2.87-3.12	0.113-0.123
D	1.50-1.75	0.059-0.069	1.07-1.32	0.042-0.052	1.50-1.75	0.059-0.069
E	0.8	0.032	0.5	0.020	0.8	0.032
F	2.78	7/64	2.78	7/64	3.57	9/64
Board Size	1.59	1/16	1.59	1/16	2.38	3/32
Hole Size	1.32	0.052	1.0	0.40	1.32	0.052
Hole Centre	3.20	0.125	2.5	0.100	3.20	0.125

Glass Bead								
Coefficient of thermal expansion	Viscosity (poise)			Specific Gravity	Log10 DC Resistivity (Ohm/cm)			Dielectric Properties
	@4900C	@5300C	@7400C		@250C	@2500C	3500C	
51x10 ⁻⁷ Cm/cm/oC				2.35				Constant (1Mhz@20oC) =5.2 Loss Angle (tan δ - 1 MHz @ 20°C) = .0024
	14.6 10	13 10	7.6 10		15.7	8.8	7.2	