



IB SERIES POWER ENTRY MODULE EMI FILTERS



INTRODUCTIONS

1. Power module incorporates an IEC connector, single or double-fuse (IEC 5 x 20mm) holder, and double-pole power switch, plus an EMI filter all-in-one easy-to-install unit.
2. All part numbers are UL recognized, CSA certified and VDE approved.
3. Switch electrical lifetime: 10,000 cycles. Maximum inrush current: 50A.

COMPONENTS

| PART NO. | Cx (uF) | L (mH) | Cy(pF) | R (Ω) |
|----------|---------|--------|--------|-------|
| 01IB2D | 0.22 | 7.5 | 2200 | 1M |
| 01IB2S | | | | |
| 03IB2D | | 2.0 | | |
| 03IB2S | | | | |
| 06IB2D | | 0.45 | | |
| 06IB2S | | | | |

MINIMUM INSERTION LOSS IN dB

| COMMON MODE (L-G) IN 50 OHM SYSTEM | | | | | | |
|--|---------------|------|-----|-----|----|----|
| CURRENT RATING | FREQUENCY-MHz | | | | | |
| | 0.15 | 0.50 | 1.0 | 5.0 | 10 | 30 |
| 1A | 28 | 40 | 40 | 35 | 35 | 25 |
| 3A | 15 | 30 | 35 | 35 | 40 | 25 |
| 6A | 8 | 15 | 20 | 32 | 40 | 25 |
| DIFFERENTIAL MODE (L-G) IN 50 OHM SYSTEM | | | | | | |
| 1A | 10 | 20 | 28 | 35 | 38 | 35 |
| 3A | 8 | 15 | 20 | 30 | 35 | 35 |
| 6A | 8 | 15 | 15 | 30 | 35 | 35 |

TYPE & RATED CURRENT

| DELTA PART NO. | 01IB2D | 03IB2D | 06IB2D | 01IB2S | 03IB2S | 06IB2S |
|---------------------------|--------|--------|--------|--------|--------|--------|
| RATED CURRENT | 1A | 3A | 6A | 1A | 3A | 6A |
| | 115VAC | 1A | 3A | 6A | 1A | 3A |
| | 250VAC | 1A | 3A | 6A | 1A | 3A |
| IEC CONNECTOR | | | | | | |
| FUSE | DOUBLE | | | SINGLE | | |
| •DOUBLE-POLE POWER SWITCH | DOUBLE | | | DOUBLE | | |
| ELECTRICAL SCHEMATIC | FIG. A | | | FIG. B | | |

• UL, CSA, VDE approved current rating: UL/CSA-10A both at 125VAC and 250VAC: VDE-4A/250VAC.

MECHANICAL CONSTRUCTION

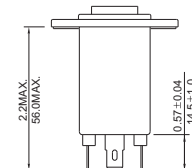
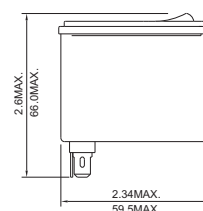
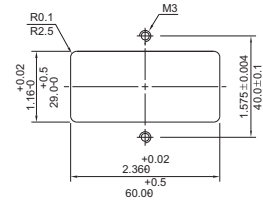
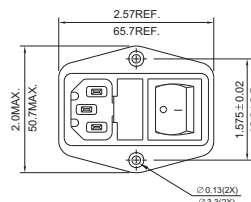
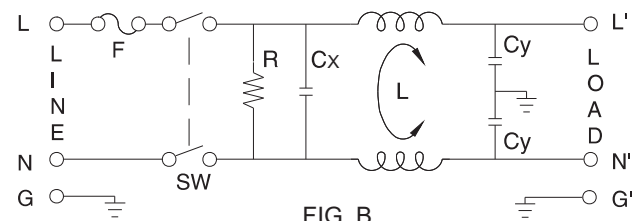
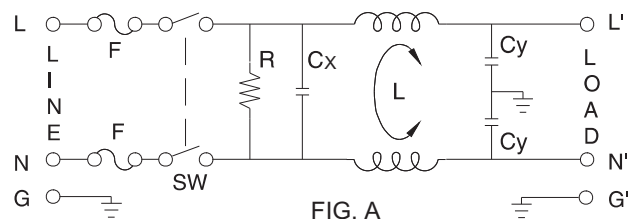


IB2D

SPECIFICATIONS

1. Maximum leakage current each line-to-ground @ 115VAC 60Hz: 0.2mA @ 250VAC 50Hz: 0.4mA
2. Hipot rating (one minute) line-to-ground: 2250VDC line-to-line: 1450VDC
3. Operating frequency: 50/60Hz
4. Rated voltage: 115/250VAC

ELECTRICAL SCHEMATIC



UNIT: INCH/mm

POWER ENTRY MODULE FILTERS

Mouser Electronics

Authorized Distributor

Click to View Pricing, Inventory, Delivery & Lifecycle Information:

[Delta Electronics:](#)

[03IB2D](#) [03IB2S](#) [06IB2S](#) [06IB2D](#) [01IB2D](#) [01IB2S](#)