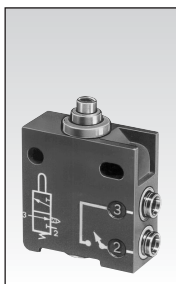


# "Miniature" series position detectors

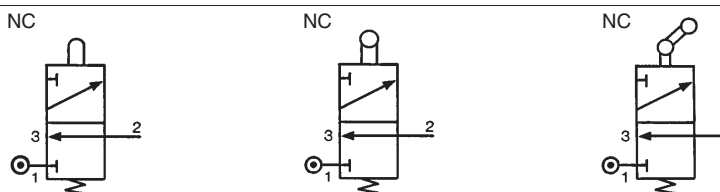


1

## Part numbers

Version	Push-in connection for semi-rigid tubing (NFE 49100)				
	Ø 4 silenced exhaust	<b>81 921 501</b>	<b>81 921 701</b>	<b>81 921 702</b>	<b>81 921 707</b>
NC	M5 connectable exhaust	—	—	—	—
	Ø 4 connectable exhaust *	—	—	—	—
	Ø 6 connectable exhaust *	—	—	—	—
NO	Ø 4 silenced exhaust	—	—	—	—
	Ø 6 silenced exhaust	—	—	—	—
Control		Simple plunger	Lever with plastic roller	Lever with roller bearing	Lever with one-way trip plastic roller

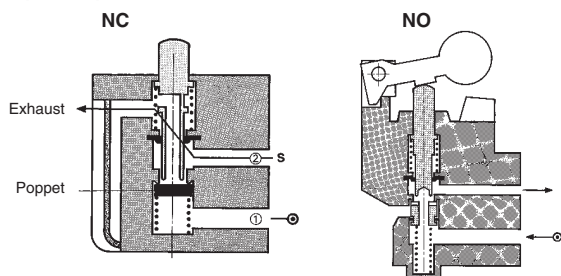
## Symbol



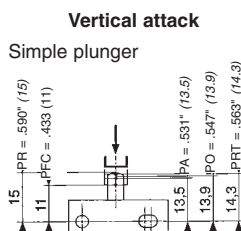
## Characteristics

Operating pressure	psi (bar)	2 >120 (0.18>8)	2 >120 (0.18>8)	2 >120 (0.18>8)	2 >120 (0.18>8)
Orifice diameter	inches (mm)	0.106 (2.7)	0.106 (2.7)	0.106 (2.7)	0.106 (2.7)
Flow at 90 psi (6 bars)	cfm (NI/min)	7 (200)	7 (200)	7 (200)	7 (200)
Actuation force at 90 psi (6 bars)	oz (N)	63 (18)	63 (18)	63 (18)	63 (18)
Circuit function : NC		—	—	—	—
Circuit function: NO		—	—	—	—
Operating temperature	°F (°C)	+20>+120 (-5>+50)	+20>+120 (-5>+50)	+20>+120 (-5>+50)	+20>+120 (-5>+50)
Mechanical life	operations	10 million	10 million	10 million	10 million
Weight	grams	62	75	80	77

## Principle of operation



## Actuation travel

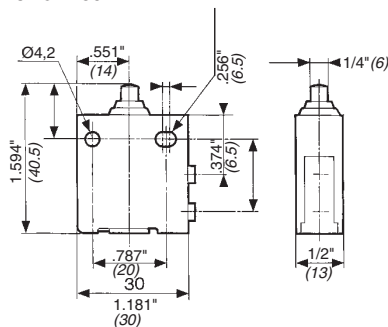


### Actuation positions :

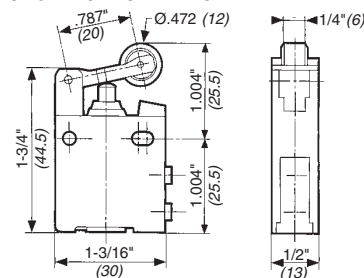
- PA : Operating position (max output CV)
- PFC : End of travel position
- PO : Mid-position closed (no exhaust, no outlet)
- PRT : Release position (max exhaust CV)
- PR : Rest position

## Dimensions

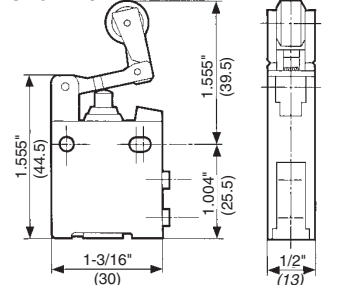
### 81 921 501



### 81 921 701 - 81 921 702



### 81 921 707



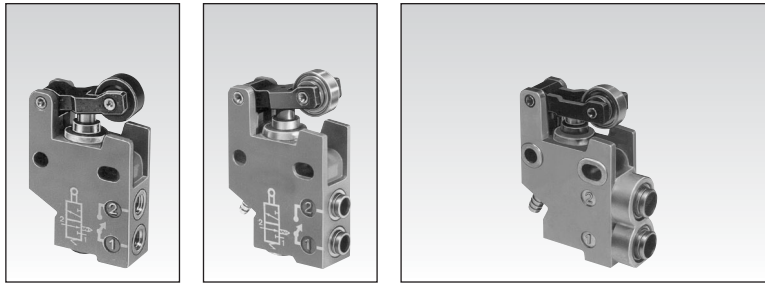
Use (metric) dimensions for critical data

## Other information

\* with barb for tube 0.106" (2.7) I.D. AND 5/32" (4) O.D.

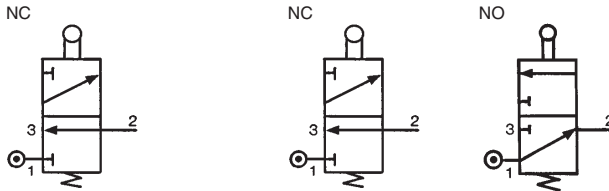
Products and specifications subject to change without notice.

Order/Technical Support – Tel: (800) 677-5311 / FAX: (800) 677-3865 / www.crouzet-usa.com



1

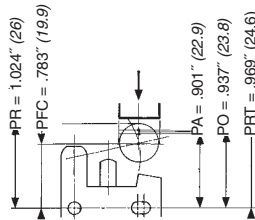
—	—	—	—
—	—	—	—
<b>81 921 806</b>	<b>81 921 714</b>	<b>81 921 719</b>	<b>81 921 717</b>
—	—	<b>81 921 911</b>	<b>81 921 912</b>
—	—	<b>81 921 901</b>	<b>81 921 902</b>
—	—	—	—
Lever with plastic roller	Lever with roller bearing	Lever with plastic roller	Lever with roller bearing



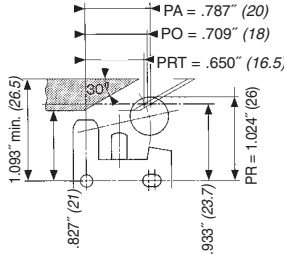
2 > 120 (0.18 > 8)	2 > 120 (0.18 > 8)	2 > 120 (0.18 > 8)	2 > 120 (0.18 > 8)
0.106 (2.7)	0.106 (2.7)	0.106 (2.7)	0.106 (2.7)
7 (200)	7 (200)	7 (200)	7 (200)
63 (18)	63 (18)	63 (18)	63 (18)
—	—	—	—
+20 > +120 (-5 > +50)	+20 > +120 (-5 > +50)	+20 > +120 (-5 > +50)	+20 > +120 (-5 > +50)
10 million	10 million	10 million	10 million
75	80	100	100

**Horizontal actuating 30° cam (other angles of attack are also possible, 45° even 90°).**

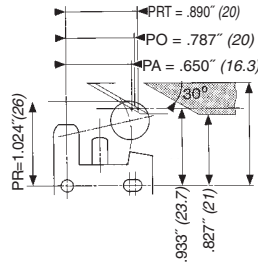
With lever



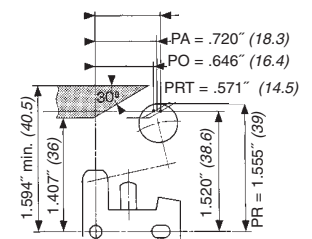
With lever



With lever



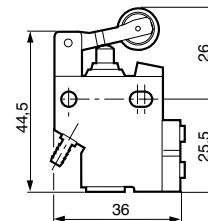
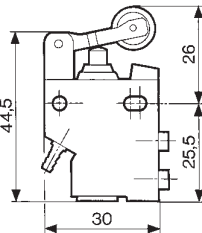
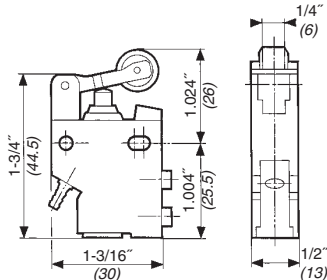
One-way trip lever



81 921 806 - 81 921 714 - 81 921 911 - 81 921 912

81 921 714

81 921 717 - 81 921 719  
81 921 901 - 81 921 902  
81 921 911 - 81 921 912



Use (metric) dimensions for critical data

**To order, specify :**

Standard products

**1** Part number

Standard products, non stocked

Example : "Miniature" series position detectors 81 921 501

Products and specifications subject to change without notice.

Order/Technical Support – Tel: (800) 677-5311 / FAX: (800) 677-3865 / www.crouzet-usa.com

