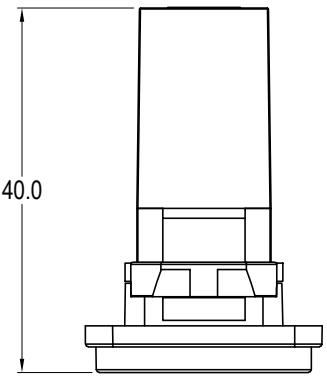
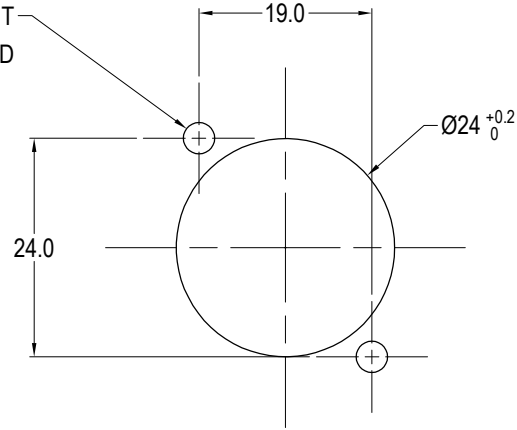


NO.	REVISED	DATE
1	ISSUED	16/05/19



PANEL CUTOUT
MAXIMUM PANEL
THICKNESS 3mm

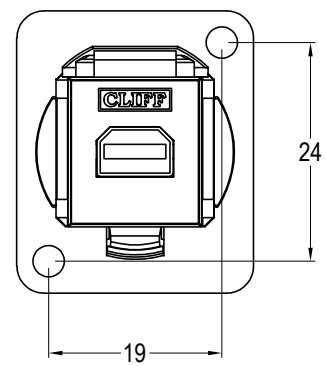
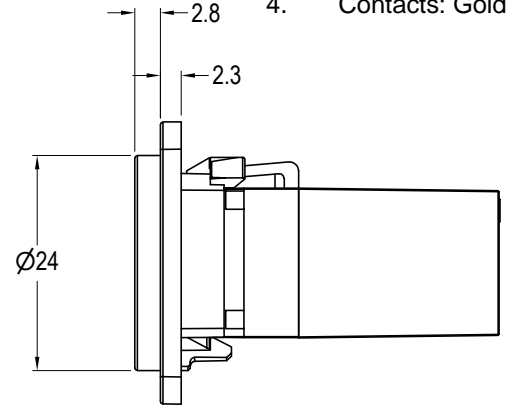
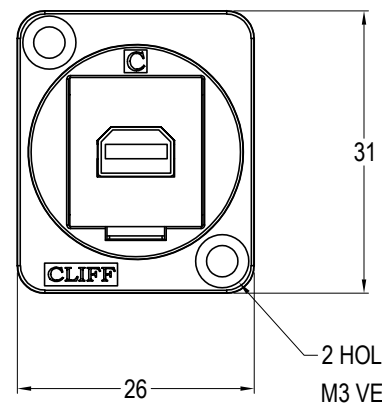
HOLES TO SUIT
SCREW USED



Material:

1. Insert: ABS UL94 HB
2. Frame: Nickel plated zinc diecast
3. Shell: Nickel plated
4. Contacts: Gold Plated

VARIANTS	
PART NO.	HOLE DETAILS
CP30202M	HOLE Ø3.50 X CSK 82° X Ø5.85
CP30202M3	M3 HOLES



2 HOLES: Ø3.5mm CSK 82° x Ø5.85
M3 VERSION HAS M3 THREAD HOLES.

RoHS
COMPLIANT

TOLERANCE
NO DEC. PLACE ±
1 DEC. PLACE ±
2 DEC. PLACE ±
HOLE Ø ±
ANGLES ±
UNLESS
OTHERWISE STATED

DO NOT SCALE

Cliff Electronic Components Ltd.
76 Holmehorpe Avenue, Holmehorpe Industrial Estate,
Redhill, Surrey, RH1 2PF, England, UK
Tel: 01737-771375 Fax: 01737-766012 Website: www.cliffuk.co.uk

DIMENSIONS IN MILLIMETERS UNLESS OTHERWISE STATED. WORK TO DIMENSIONS. REMOVE ALL BURRS. IF IN DOUBT ASK.

3rd ANGLE PROJECTION:

MATERIAL: See Notes
FINISH: See Notes

TITLE: FT MINI DISPLAY PORT (F-F) - NICKEL

THE CONTENTS OF THIS DOCUMENT MUST NOT BE COPIED OR DISCLOSED TO A 3rd PARTY WITHOUT WRITTEN PERMISSION OF CLIFF UK. © 2019

DRAWN: T.J.O.

APPROVED: D.P.J.

DRWG. No. **CP30202M**

FORM: A4DRWGH