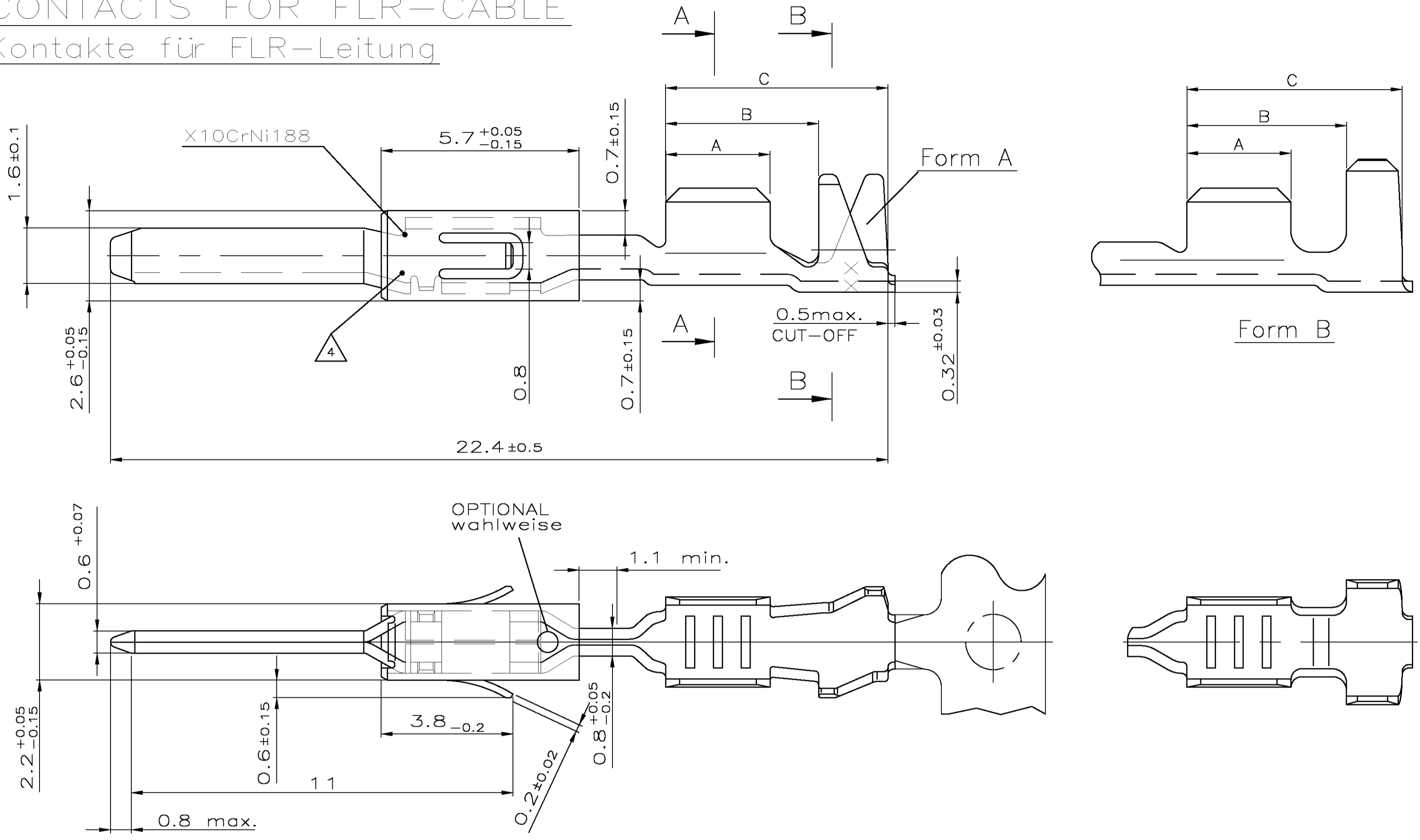


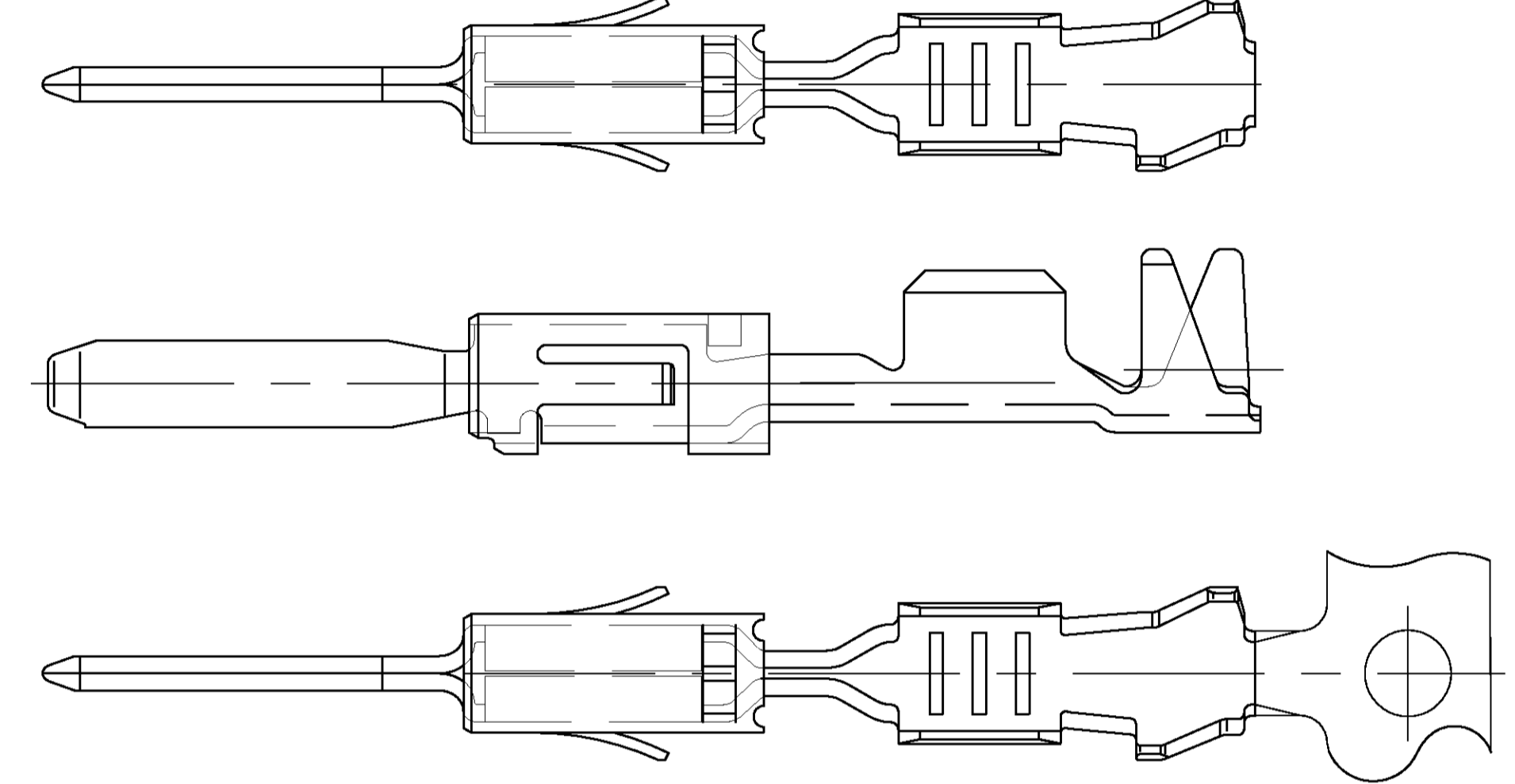
CONTACTS FOR FLR-CABLE
Kontakte für FLR-Leitung



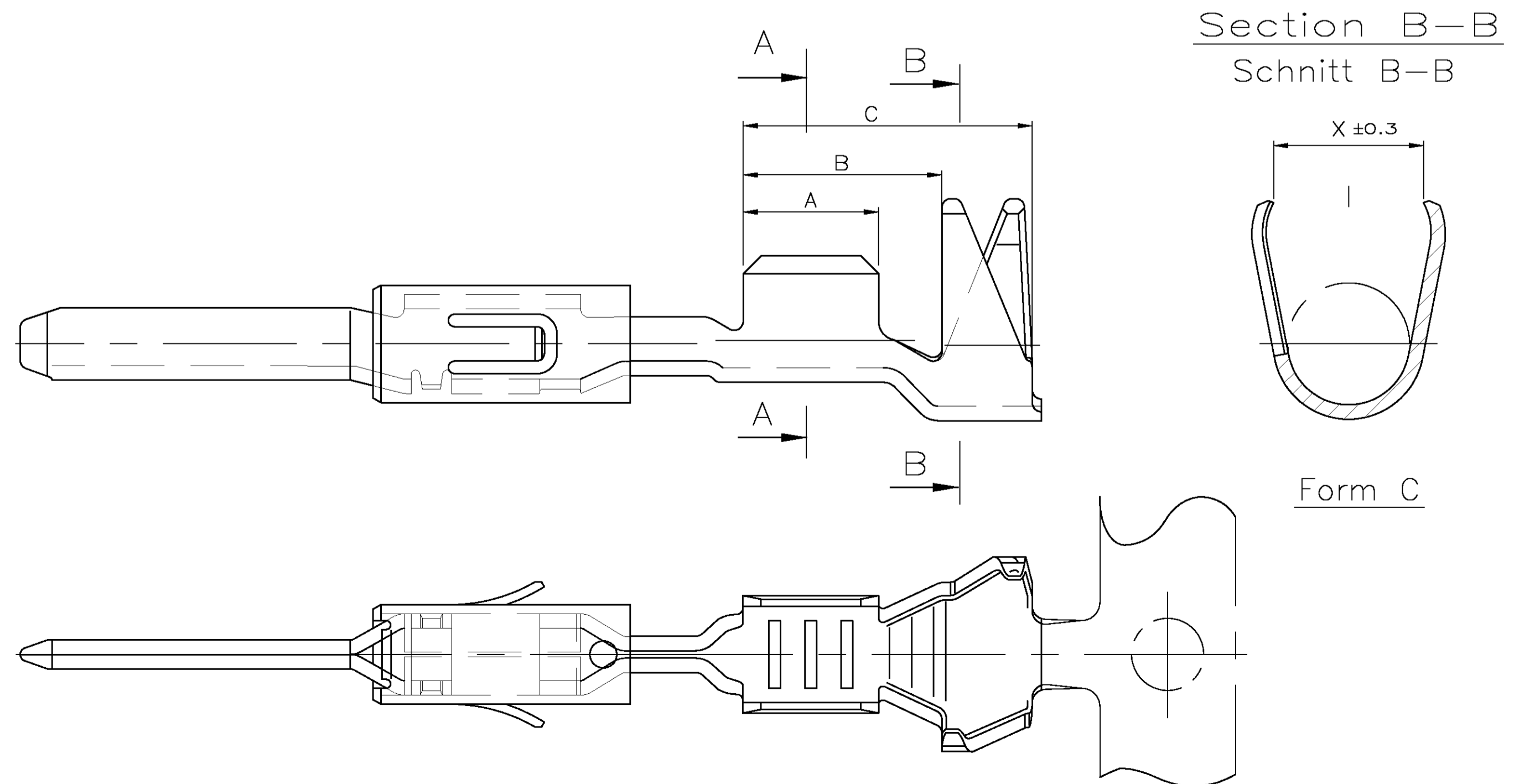
LOC	DIST	REV	DESCRIPTION	DATE	BY	APPV
		A6	Drawing updated	22OCT2007	Abr	Brun
		A7	PN's 964265 and 964266 Wire Range corrected from 0.2-0.5 to 0.2-0.35 (SHEET 2)	22FEB2008	Abr	Brun
		A8	new Dash-variant added	25AUG2009	Meyer	Bruner
		A9	new Dash-variant added	23SEP2009	Meyer	Bruner
		A10	Single wire seal 2112323-1 in table on sheet 2 added.	14SEP2010	Kirsch	Schuler

DIFFERENT TOOL DETAILS
Verschiedene Werkzeugausführungen
FUNKTION AND HANDLING WITH
ALL DETAILS CONTINUOUSLY
Funktion und Handhabung gleich
bei allen Ausführungen
SUPPLY AFTER AVAILABILITY
Lieferung nach Verfügbarkeit

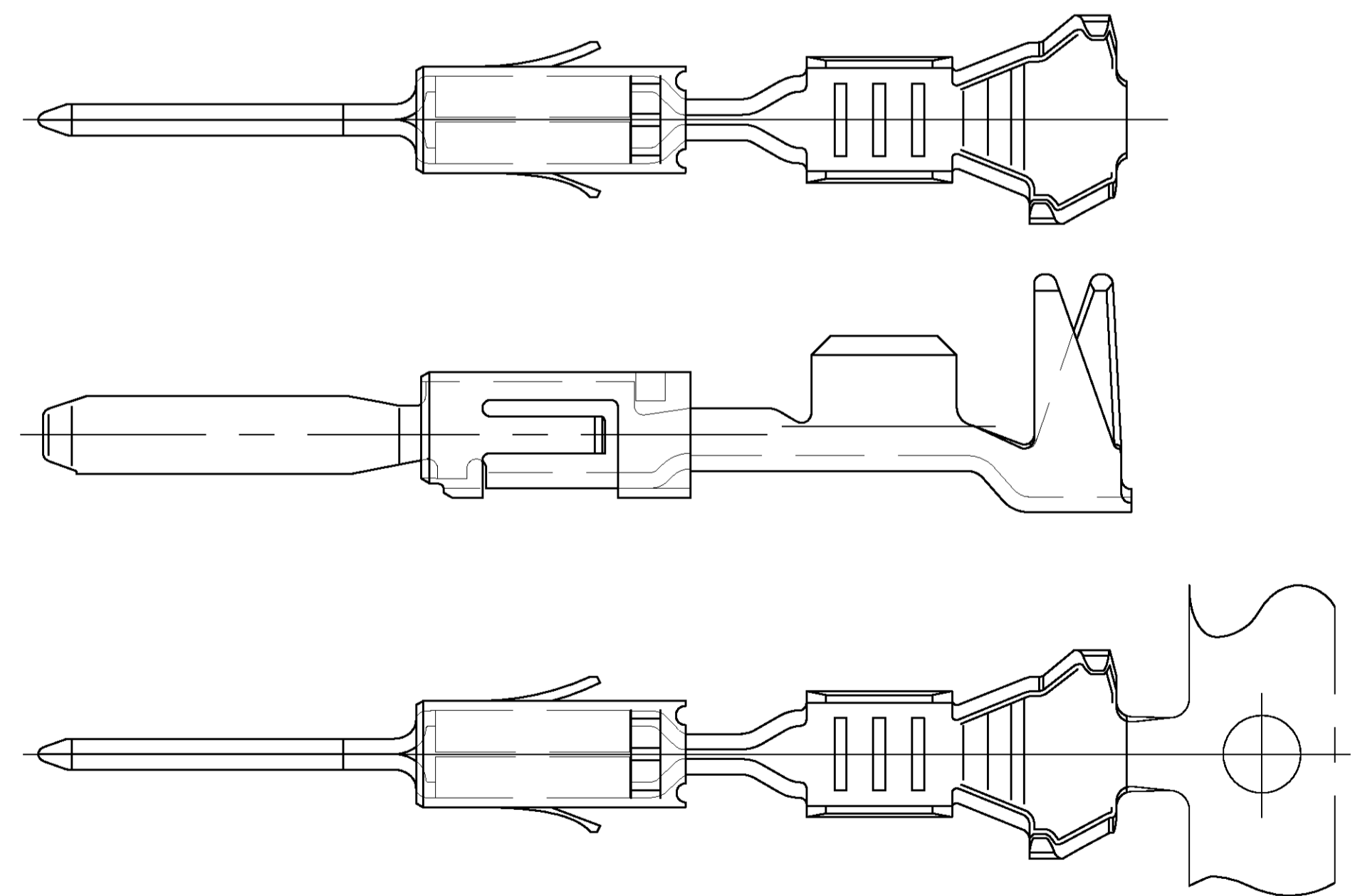
CONTACTS FOR FLR-CABLE
Kontakte fuer FLR-Leitung



CONTACTS FOR
SINGLE WIRE SEALING SYSTEM: FLR- AND FLK-CABLE
Kontakte fuer Einzeldichtung-System: FLR- und FLK-Leitung
DIMENSIONS SEE FIGURE CONTACTS FOR FLR- AND FLK-CABLE
Masse siehe Darstellung der Kontakte fuer FLR-Leitung



CONTACTS FOR SEALING SYSTEM: FLR- AND FLK-CABLE
Kontakte fuer Einzeldichtungs-System FLR- und FLK-Leitung



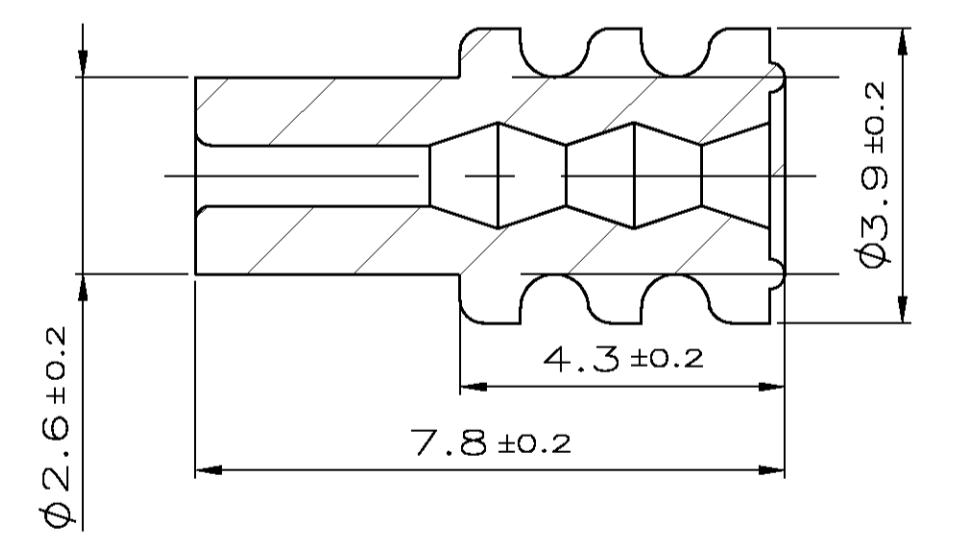
THIS DRAWING IS A CONTROLLED DOCUMENT. DIESE ZEICHNUNG IST EIN KONTROLLIERTES DOKUMENT.		DWG: T.Bersch 11.06.97	Tyco Electronics Tyco Electronics AMP GmbH 64625 Bensheim	
DIMENSIONS: HASENHEITEN: mm		CHK: U.Muenk	NAME: PRODUCT GROUP DRAWING Tab 1.6 x 0.6 mm TYP A	
TOLERANCES UNLESS OTHERWISE SPECIFIED: ALLEGERENT TOLERANZEN		APVD: -	PRODUCT SPEC: PRODUKTSPEZ.	
0-PLC ±0.2 1-PLC ±0.2 2-PLC ±0.2 3-PLC ±0.2 4-PLC ±0.2 ANGLES / WINKEL ±0.2		APPLICATION SPEC: VERARBEITUNGSSPEZ.	SIZE: 1.6 x 0.6 mm TYP A	
MATERIAL: -		FINISH / OBERFLÄCHE / FARBE: -	SCALE: 1:1	DRIVING NO: 114-18082
WEIGHT: -		GEWICHT: -	SCALE: 0:1	DRIVING NO: 114-18082
CUSTOMER DRAWING / KUNDENZEICHNUNG		SCALE: 0:1	SHEET: 1 OF 2	REV: A10

Order No. BESTELL- NR.	Rev.	Order No. BESTELL- NR.	Wire Range Drahtgrößen Bereich (mm ²)	Insulation Isolations Ø (mm)	Material Werkstoff	Surface Oberfläche	Lenght Laenge	Wire crimp Drahtcrimp	Insul.crimp Iso'crimp	Wire crimp Drahtcrimp	Insul.crimp Iso'crimp	Order No. BESTELL- NR.	Order No. BESTELL- NR.	Crimp data and Crimp tool
Strip BANDWARE		Loose piece Einzelaus- fuehrung						Crimp Dimension Crimpabmessungen (mm)				Tool/Insert Handzange/Matrize Loose piece Einzelausfuehrung	Extraction tool Ausdrueckwerkzeug	Crimpdaten u. Crimpwerkzeuge
1703278-5	A	1703279-5	1.5	2.2-2.4	CuSn 4	5	A = 3.0 B = 4.4 C = 6.4 X = 3.6	E = 2.8 G = 3.0 D _{br} = 1.4	H = 4.6 K = 4.9 D _{oo} = 2.9	E = - G = - D _{br} = -	H = - K = - D _{oo} = -			
1703278-2	A	1703279-2			CuFe 2	tin plated vorverzint			Form C					
964269-5	A	964270-5	0.5-1.0	1.4-2.1	CuSn 4	5	A = 3.0 B = 4.4 C = 6.4 X = 3.3	E = 2.5 G = 2.7 D _{br} = 1.2	H = 4.3 K = 4.8 D _{oo} = 2.7	E = 2.2 G = 2.8 D _{br} = 1.2	H = 3.8 K = 4.5 D _{oo} = 2.3	Hand tool (Handzange) 169400-0 539635-1	Insert (Matrize) 539612-1 539663-2	
964269-3	D	964270-3			CuSn 4	1			Form C					
964269-2	D	964270-2			CuFe 2	tin plated vorverzint								
969028-5	A	969029-5	0.2-0.5	1.2-1.6	CuSn 4	5	A = 2.5 B = 4.4 C = 6.4 X = 3.3	E = 2.1 G = 2.1 D _{br} = 0.8	H = 4.3 K = 4.8 D _{oo} = 2.6	E = 1.7 G = 2.15 D _{br} = 0.8	H = 3.6 K = 4.4 D _{oo} = 2.1	Hand tool (Handzange)	Insert (Matrize)	
969028-3	D	969029-3			CuSn 4	1			Form C					
969028-2	D	969029-2			CuFe 2	tin plated vorverzint								
1241846-3	A	1241847-3	1.5	2.2-2.4	CuSn 4	1	A = 3.0 B = 4.4 C = 6.4	E = 2.8 G = 3.0 D _{br} = 1.4	H = 3.5 K = 3.9 D _{oo} = 1.9	E = 2.2 G = 3.0 D _{br} = 1.4	H = 2.8 K = 3.9 D _{oo} = 1.6			
1241846-2	A	1241847-2			CuFe 2	tin plated vorverzint			Form A					
1241846-1	A	1241847-1			CuSn 4	tin plated vorverzint								
			0.5-1.0	1.4-2.1			A = 3.0 B = 4.6 C = 6.2	E = 2.5 G = 2.8 D _{br} = 1.2	H = 3.7 K = 3.9 D _{oo} = 1.8	E = 2.2 G = 2.8 D _{br} = 1.2	H = 2.8 K = 3.9 D _{oo} = 1.6			
									Form B					
969079-2	B	969080-2			CuFe 2	tin plated vorverzint								
964267-3	C	964268-3	0.5-1.0	1.4-2.1	CuSn 4	1	A = 3.0 B = 4.4 C = 6.4	E = 2.5 G = 2.7 D _{br} = 1.2	H = 3.2 K = 3.4 D _{oo} = 1.8	E = 2.2 G = 2.8 D _{br} = 1.2	H = 2.8 K = 3.0 D _{oo} = 1.6	Hand tool (Handzange) 169400-0 539635-1	Insert (Matrize) 539612-1 539663-2	
964267-2	C	964268-2			CuFe 2	tin plated vorverzint			Form A					
964267-1	C	964268-1			CuSn 4	tin plated vorverzint								
			0.2-0.35	1.15-1.6			A = 2.5 B = 4.4 C = 6.4	E = 2.1 G = 2.1 D _{br} = 0.8	H = 2.9 K = 2.9 D _{oo} = 1.4	E = 1.7 G = 2.1 D _{br} = 0.8	H = 2.5 K = 2.55 D _{oo} = 1.4	Hand tool (Handzange)	Insert (Matrize)	
964265-3	C	964266-3			CuSn 4	1			Form A					
964265-2	C	964266-2			CuFe 2	tin plated vorverzint								

726 534-1
539 960-1

see Applicationspecification
siehe Verarbeitungsspezifikation

Single wire
sealing system



Notes
Bemerkungen

- 1 Contact area selectiv gold over nickel 0.8 µm min.
Kontaktzone selectiv vergoldet 0.8 µm min. ueber Ni
Wire crimp area electro tin plated
1 µm min. over nickel
Drahtcrimpbereich gal. verzint 1 µm min. ueber Ni
- 2 For double- and single termination
Fuer Doppel- und Einzelanslaege

- 4 Spring design optional see sheet 1
Ausfuehrung der Ueberfeder wahlweise siehe Blatt 1
- 5 Contact area selectiv silver over nickel 3 µm min.
Kontaktzone selectiv versilbert 3 µm min. ueber Ni
Wire crimp area electro tin plated
1,5 µm min. over nickel
Drahtcrimpbereich gal. verzint 1,5 µm min. ueber Ni

3 According insulation Ø is to choose the single wire seal
Entsprechend dem Isolationsdurchmesser ist die Einzel-Dichtung auszuwaehlen

Einzel-Dichtung Single Wire Seal		
2112323-1	1.9-2.4	orange orange
964972-1	1.9-2.1	yellow gelb
963530-1	1.4-1.9	grey grau
964971-1	1.2-1.6	red rot
ORDER NO. BESTELL- NR.	Insulation Ø Isolations Ø	Colour Farbe

THIS DRAWING IS A CONTROLLED DOCUMENT. DIESE ZEICHNUNG IST EIN KONTROLLIERTES DOKUMENT.		DWG: T.Bersch 01.08.97 CHK: U.Muenk 08.08.97	Tyco Electronics Tyco Electronics AMP GmbH 64625 Bensheim	
DIMENSIONS: MÄSSENHEITEN: mm	TOLERANCES UNLESS OTHERWISE SPECIFIED: ALLE DIMENSIONSTOLERANZEN	NAME	PRODUCT GROUP DRAWING FOR Tab 1.6 x 0.6 mm TYP A	
MATERIAL	FINISH / OBERFLÄCHE / FARBE	APPLICATION SPEC VERARBEITUNGSSPEZ	Flachstecker 1.6 x 0.6 mm TYP A	
		SIZE GRÖßE	DRAWING NO. ZEICHNUNGS-NR	RESTRICTED TO BESCHRÄNKT FÜR
CUSTOMER DRAWING / KUNDENZEICHNUNG		SCALE MAßSTAB	SHEET BLATT	REV REV