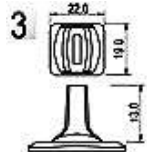


## Rocker Switch

**Q-10467**

TYPE: **R13-290AL3R**

**Rocker**



### SPECIFICATIONS

Rating: 6A 125V AC; 3A 250V AC

Contact R: 50mΩ max

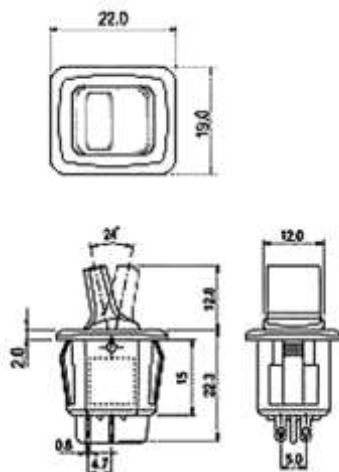
Insulation R: 500V DC 100MΩ min

Dielectric Strength: 1 Minute 1000V AC

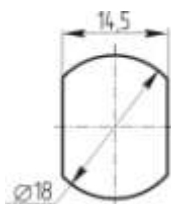
Operating Temperature: -25°C ~ +85°C

Electrical Life: 10, 000 Cycles

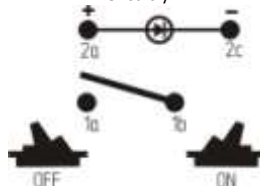
Outline Drawing



Mounting



Circuitry



**4P SPST  
(LED)**