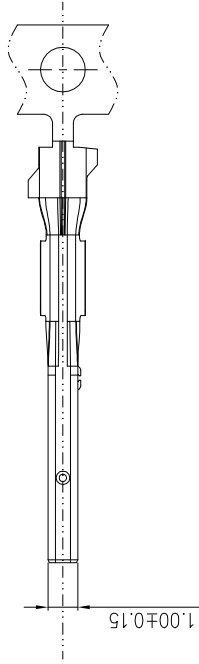
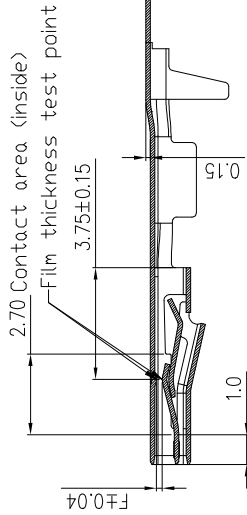
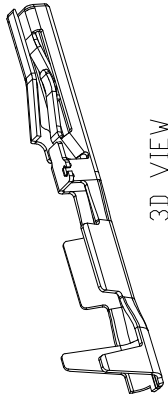


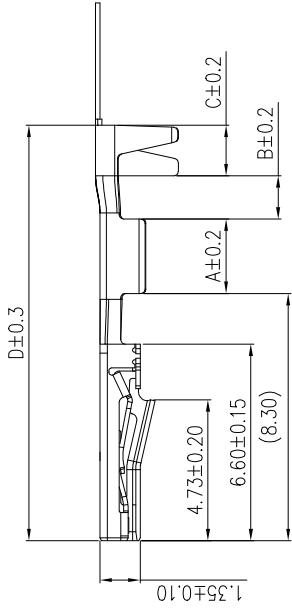
| | |
|-------------|------------------|
| PART NUMBER | 10153126 - YXZLF |
|-------------|------------------|



3D VIEW



SECTION A-A



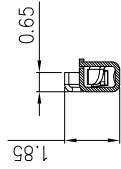
NOTES:

1. MATERIAL: C7025 TM03, T=0.15±0.01mm.
2. FINISHED: REFER TO P/N SYSTEM.
3. UNLESS OTHERWISE SPECIFIED, ALL INNER RADII ARE R0.10mm.
4. DIMENSIONING SHALL BE INTERPRETED PER ASME Y14.5-2009.
5. PART NUMBER: 10153126 - X Y Z LF

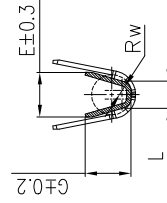
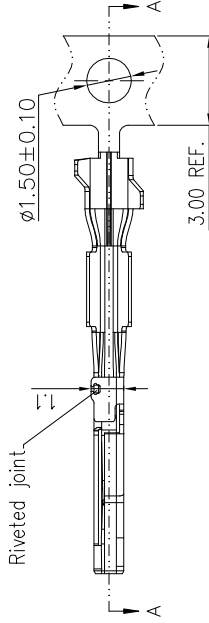
CONTACT PLATING:
 0=Full Tin 1~2.5um Plated
 1=0.15um Gold on mating area
 2=0.375um Gold on mating area with lubrication
 3=0.75um Gold on mating area with lubrication
 4=Full Reflow Tin 1~2.5um Plated Cu underplated.
 5=Full Reflow Tin 1~2.5um Plated Ni under plated

WIRE SIZE RANGE:
 1=0.13 to 0.17mm²
 2=0.22 to 0.35mm²

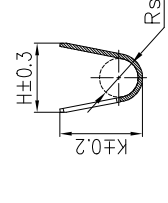
TERMINAL TYPE :
 C=TYPE A (MEET USCAR V1 LEVEL)
 T=TYPE B (MEET USCAR V2 LEVEL)



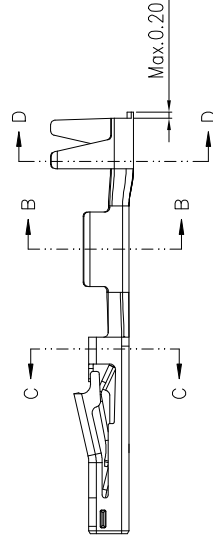
SECTION C-C



SECTION B-B



SECTION D-D



After stamping and plating

| | | | | | |
|----------------|------------------------------------|--------------------------------------|------------------------------------|--------------------------------|---------|
| 10153126 - XY2 | 0.22 to 0.35 | A=2.50 B=1.45 C=1.7 D=13.95 | Rw=0.3 E=1.7 G=1.5 L=1.05 | Rs=1.0 H=1.9 K=1.9 | 0.20 |
| 10153126 - XY1 | 0.13 to 0.17 | A=2.50 B=1.45 C=1.7 D=13.95 | Rw=0.3 E=1.6 G=1.15 L=0.9 | Rs=0.9 H=1.9 K=1.8 | |
| PART NUMBER | WIRE SIZE RANGE [mm ²] | LENGTH | DRAHTCRIMP WIRE CRIMP [mm] | SO CRIMP INSULATION CRIMP [mm] | F [GAP] |

| | | | | | |
|--------------|---------------------------|---------------------------------------|--------------|------------|-----------------------------|
| mat'l. code | ISO 1302 | surface | tolerance | projection | product family |
| tr ecn no dr | date | ISO 406/ISO 1101 | ISO 1101 | mm | HPL649 |
| A | NICK 08/26/19 | tolerances unless otherwise specified | angle | scale 1:1 | |
| B | ELX-N-37059 DW 5/25/2020 | | 0.00±.25 | | CABLE TERMINAL |
| C | ELX-N-37519 DW 6/29/2020 | | 0.00±.010 | | WireLock® Series Cable Kits |
| D | ELX-N-38784 DW 10/30/2020 | NICK ZHANG 05/22/19 | | | dwg no sheet 1 of 1 size |
| E | ELX-N-40676 DW 04/14/2021 | NICK ZHANG 05/22/19 | | | A4 |
| sheet index | revision E | chr ZK HU | appd TIM YAO | | Product Customer Drawing |
| sheet 1 | sheet 1 | | | | 10153126 |