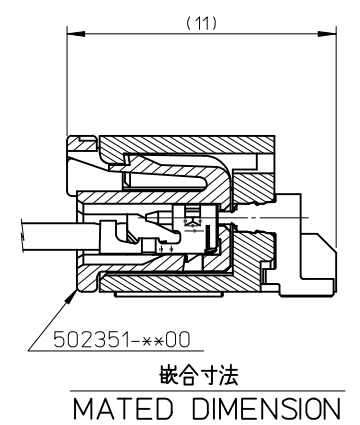
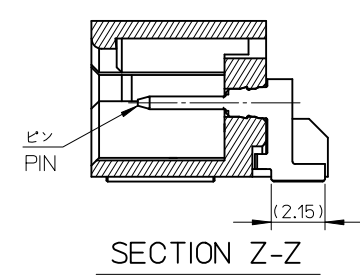


参考基板取り付け寸法(N=極数)

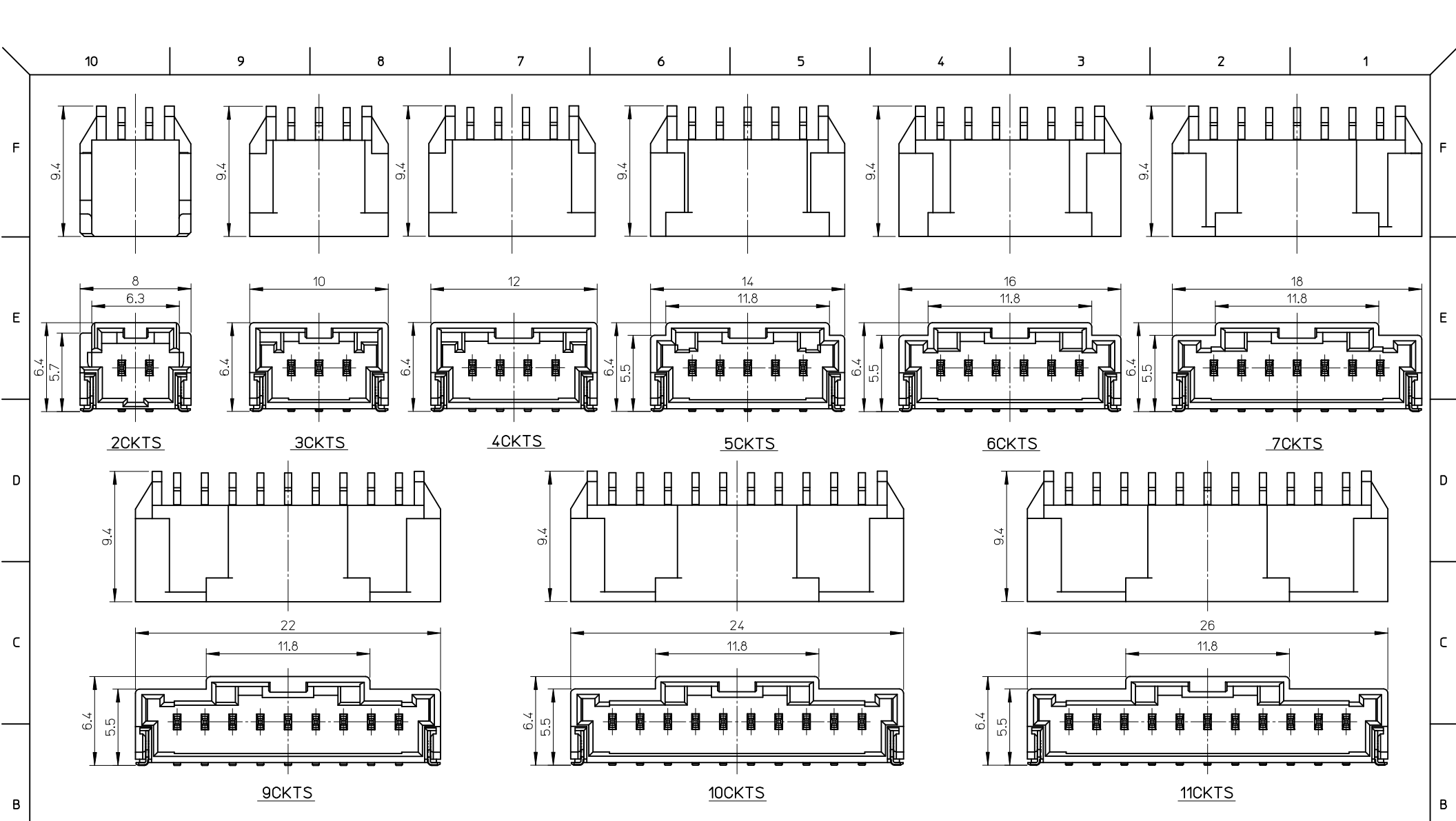


注記 NOTES

- 材質  
ハウジング: 耐熱性ナイロン UL94V-0  
ピン: 銅合金、ニッケル下地、錫メッキ、金メッキ  
フィッティングネール: 銅合金、ニッケル下地、錫メッキ  
MATERIAL  
HOUSING: POLYAMIDE UL94V-0  
PIN: COPPER ALLOY, GOLD OR TIN OVER NICKEL PLATE.  
FITTING NAIL: COPPER ALLOY, TIN OVER NICKEL PLATE.
- 色: ナチュラル、黒  
COLOR: NATURAL, BLACK
- 嵌合相手  
ハウジング: 502351-\*\*0\*  
錫メッキ端子: 50212-8\*00, 50372-8\*00, 560085-0101  
金メッキ端子: 56161-8\*81  
MATES WITH  
HOUSING: 502351-\*\*0\*  
SN PLATING TERMINAL: 50212-8\*00, 50372-8\*00, 560085-0101  
AU PLATING TERMINAL: 56161-8\*81
- エンボス梱包品の詳細はSD-502352-002参照  
DETAILED TAPING PACKAGE, SEE SD-502352-002.
- ELV及びRoHS適合  
ELV AND RoHS COMPLIANT
- 半田付け面のコプラナリティ: 0.1mm MAX.  
CO-PLANARITY OF SOLDERING TAILS TO BE 0.1mm MAX.

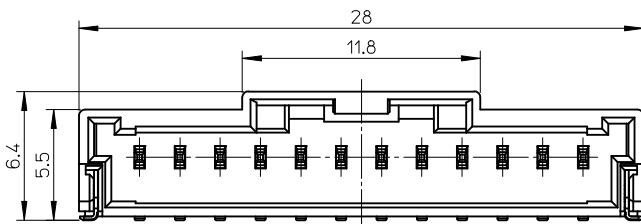
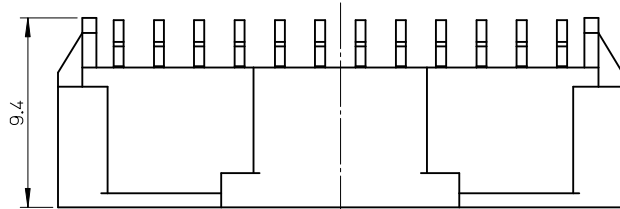
- 一般公差  
GENERAL TOLERANCES  
10 UNDER: 0.2  
10 OVER 30 UNDER: 0.25  
30 OVER: 0.3  
ANGULAR: ±3°

REVISED EC NO: JTR2015-0089 DRWN: Y.TAMAKI 2015/02/18 CHKD: H.KOMATSU 2015/02/18 APPR: M.YAMAMOTO 2015/04/28	QUALITY SYMBOLS △E/A=0 △E/B=0 △E/C=0	GENERAL TOLERANCES (UNLESS SPECIFIED)		DIMENSION STYLE MM ONLY		SCALE 5:1	DESIGN UNITS METRIC	THIRD ANGLE PROJECTION		
		mm	INCH	DRAWN BY SHSHIBATA	DATE 2007/12/18	TITLE 2.0MM PITCH W/B CONN. WAFER ASSY R/A SMT				
		4 PLACES ± --- ± ---	3 PLACES ± --- ± ---	CHECKED BY HKOMATSU	DATE 2007/12/18	DOCUMENT NO. SD-502352-001				
		2 PLACES ± --- ± ---	1 PLACE ± --- ± ---	APPROVED BY AKANESHIGE	DATE 2007/12/18					
J	REV	ANGULAR ± - °		DRAFT WHERE APPLICABLE MUST REMAIN WITHIN DIMENSIONS		SEE CHART		THIS DRAWING CONTAINS INFORMATION THAT IS PROPRIETARY TO MOLEX INCORPORATED AND SHOULD NOT BE USED WITHOUT WRITTEN PERMISSION		

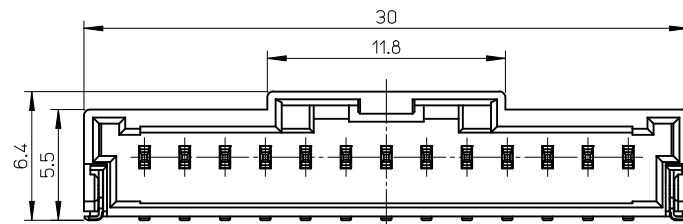
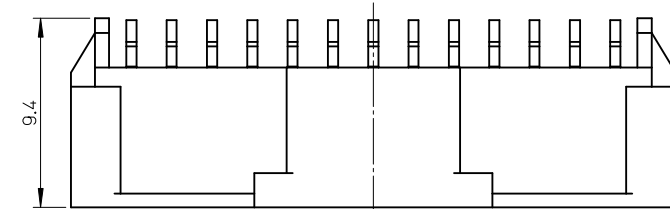


<b>REVISED</b> EC NO: JTR2015-0089 DRWN: Y. TANAKI 2015/02/18 CHKD: H. KOMATSU 2015/02/18 APPR: M. YAMAMOTO 2015/04/28	<b>QUALITY SYMBOLS</b> $\nabla = 0$ $\nabla = 0$ $\nabla = 0$	<b>GENERAL TOLERANCES (UNLESS SPECIFIED)</b> <table border="1"> <thead> <tr> <th></th> <th>mm</th> <th>INCH</th> </tr> </thead> <tbody> <tr> <td>4 PLACES</td> <td>± ---</td> <td>± ---</td> </tr> <tr> <td>3 PLACES</td> <td>± ---</td> <td>± ---</td> </tr> <tr> <td>2 PLACES</td> <td>± ---</td> <td>± ---</td> </tr> <tr> <td>1 PLACE</td> <td>± ---</td> <td>± ---</td> </tr> <tr> <td>0 PLACE</td> <td>±</td> <td>±</td> </tr> </tbody> </table>		mm	INCH	4 PLACES	± ---	± ---	3 PLACES	± ---	± ---	2 PLACES	± ---	± ---	1 PLACE	± ---	± ---	0 PLACE	±	±	DIMENSION STYLE <b>MM ONLY</b>	SCALE <b>4:1</b>	DESIGN UNITS <b>METRIC</b>	THIRD ANGLE PROJECTION
				mm	INCH																			
			4 PLACES	± ---	± ---																			
			3 PLACES	± ---	± ---																			
2 PLACES	± ---	± ---																						
1 PLACE	± ---	± ---																						
0 PLACE	±	±																						
DRAWN BY SHSHIBATA	DATE 2007/12/18	TITLE <b>2.0MM PITCH W/B CONN. WAFER ASSY R/A SMT</b>																						
CHECKED BY HKOMATSU	DATE 2007/12/18	<b>molex</b>																						
APPROVED BY AKANESHIGE	DATE 2007/12/18	MATERIAL NO. <b>SEE CHART</b>	DOCUMENT NO. <b>SD-502352-001</b>	SHEET NO. <b>2 OF 4</b>																				

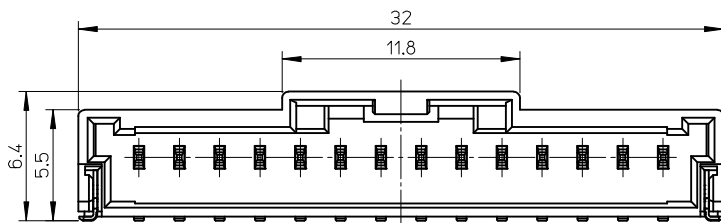
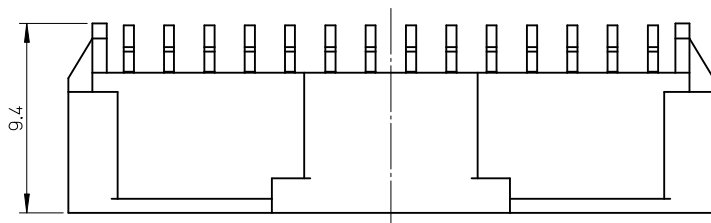
10 9 8 7 6 5 4 3 2 1



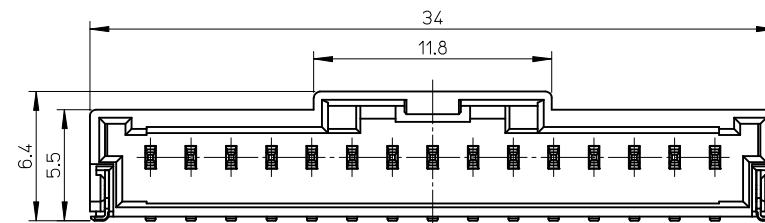
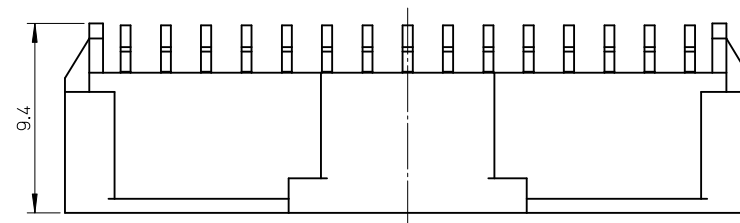
12CKTS



13CKTS



14CKTS



15CKTS

<b>REVISED</b> EC NO: JTR2015-0089 DRWN: Y. TAKAKI 2015/02/18 CHKD: H. KOMATSU 2015/02/18 APPR: M. YAMAMOTO 2015/04/28	QUALITY SYMBOLS F/S = 0 F/G = 0 F/P = 0	GENERAL TOLERANCES (UNLESS SPECIFIED)		DIMENSION STYLE <b>MM ONLY</b>	SCALE <b>4:1</b>	DESIGN UNITS <b>METRIC</b>	THIRD ANGLE PROJECTION		
		4 PLACES ± --- ± ---	3 PLACES ± --- ± ---	2 PLACES ± --- ± ---	1 PLACE ± --- ± ---	0 PLACE ± ±	DRAWN BY SHSHIBATA	DATE 2007/12/18	TITLE 2.0MM PITCH W/B CONN. WAFER ASSY R/A SMT
		ANGULAR ± - °		DRAFT WHERE APPLICABLE MUST REMAIN WITHIN DIMENSIONS		CHECKED BY HKOMATSU	DATE 2007/12/18	APPROVED BY AKANESHIGE	DATE 2007/12/18
		SEE CHART		MATERIAL NO.	DOCUMENT NO. SD-502352-001	SHEET NO. 3 OF 4			

9 8 7 6 5 4 3 2 1

	10		9		8		7		6		5		4		3		2		1
F	Sn NATURAL	34.0	502352-1500	15	Au NATURAL	34.0	502352-1510	15	PLATING COLOR	A	EMBOSSSED PACKAGE ORDER NO.	CKTS	34.0	502352-1410	14	CONNECTOR SERIES NO. 502352-**08			
		32.0	502352-1400	14		32.0	502352-1410	14											
		30.0	502352-1300	13		30.0	502352-1310	13											
		28.0	502352-1200	12		28.0	502352-1210	12											
		26.0	502352-1100	11		26.0	502352-1110	11											
		24.0	502352-1000	10		24.0	502352-1010	10											
		22.0	502352-0900	9		22.0	502352-0910	9											
		20.0	502352-0800	8		20.0	502352-0810	8											
		18.0	502352-0700	7		18.0	502352-0710	7											
		16.0	502352-0600	6		16.0	502352-0610	6											
		14.0	502352-0500	5		14.0	502352-0510	5											
		12.0	502352-0400	4		12.0	502352-0410	4											
10.0	502352-0300	3	10.0	502352-0310	3														
8.0	502352-0200	2	8.0	502352-0210	2														

D	Sn BLACK			15	C			15	PLATING COLOR	A	EMBOSSSED PACKAGE ORDER NO.	CKTS			14	CONNECTOR SERIES NO. 502352-**28
				14				14								
				13				13								
				12				12								
				11				11								
				10				10								
				9				9								
		20.0	502352-0801	8		20.0	502352-0801	8								
		18.0	502352-0701	7		18.0	502352-0701	7								
		16.0	502352-0601	6		16.0	502352-0601	6								
		14.0	502352-0501	5		14.0	502352-0501	5								
		12.0	502352-0401	4		12.0	502352-0401	4								
10.0	502352-0301	3	10.0	502352-0301	3											
8.0	502352-0201	2	8.0	502352-0201	2											

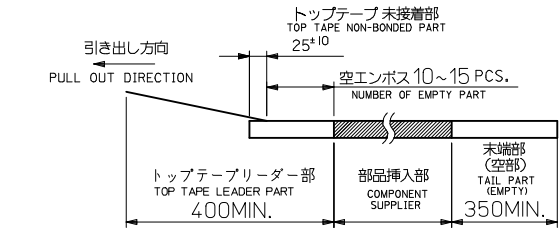
--	--	--	--	--	--	--	--	--	--	--	--	--	--	--	--	--	--	--	--

--	--	--	--	--	--	--	--	--	--	--	--	--	--	--	--	--	--	--	--

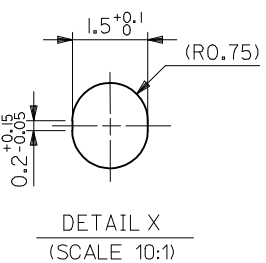
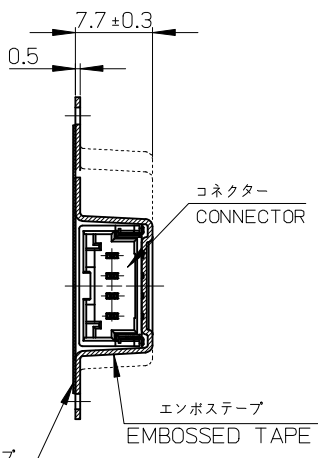
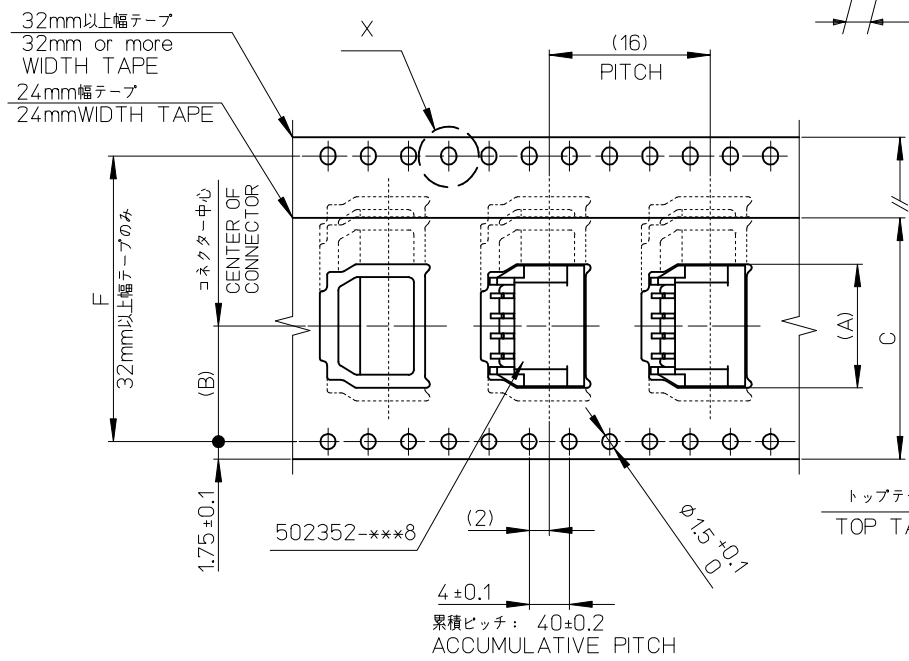
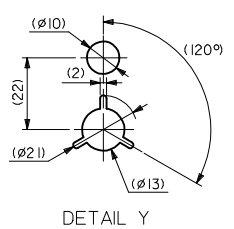
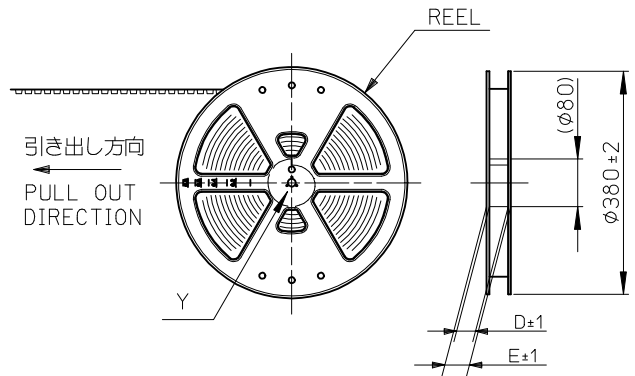
<b>REVISED</b> EC NO: JTR2015-0089 DRWN: Y. TAKAKI 2015/02/18 CHKD: H. KOMATSU 2015/02/18 APPR: M. YAMAMOTO 2015/04/28	QUALITY SYMBOLS $\nabla = 0$ $\nabla \square = 0$ $\nabla \square = 0$	GENERAL TOLERANCES (UNLESS SPECIFIED)		DIMENSION STYLE <b>MM ONLY</b>	SCALE <b>5:1</b>	DESIGN UNITS <b>METRIC</b>	THIRD ANGLE PROJECTION	
				DRAWN BY SHSHIBATA	DATE 2007/12/18	TITLE <b>2.0MM PITCH W/B CONN. WAFER ASSY R/A SMT</b>		
				CHECKED BY HKOMATSU	DATE 2007/12/18			
				APPROVED BY AKANESHIGE	DATE 2007/12/18	MATERIAL NO. <b>SEE CHART</b>	DOCUMENT NO. <b>SD-502352-001</b>	SHEET NO. <b>4 OF 4</b>
		DRAFT WHERE APPLICABLE MUST REMAIN WITHIN DIMENSIONS		THIS DRAWING CONTAINS INFORMATION THAT IS PROPRIETARY TO MOLEX INCORPORATED AND SHOULD NOT BE USED WITHOUT WRITTEN PERMISSION				

注記  
NOTES

- 製品番号  
ナチュラル: 502352-\*\*\*0  
黒: 502352-\*\*\*1  
詳細寸法については、製品単体図面を参照下さい。  
PART NO.  
NATURAL: 502352-\*\*\*0  
BLACK: 502352-\*\*\*1  
SEE SALES DRAWING FOR CONNECTOR
- 梱包数量: 700個/リール  
NUMBER OF CONNECTORS 700PCS/REEL
- リードテープ長さ  
LEAD TAPE LENGHT



- 材料  
MATERIAL  
キャリアテープ: ポリスチレン  
CARRIER TAPE: POLYSTYRENE  
トップテープ: PET, PE, PEF  
TOP TAPE: PET, PE, PEF  
リール: ポリスチレン  
REEL: POLYSTYRENE
- 一般降参  
GENERAL TOLERANCES  
10 UNDER: 0.2  
10 OVER 30 UNDER: 0.25  
30 OVER: 0.3  
ANGULAR:  $\pm 1^\circ$



引き出し方向  
PULL OUT DIRECTION

エンボステープ内の製品の向き  
DIRECTION OF CONNECTOR  
IN EMBOSS TAPE

REVISED EC NO: JTR2015-0089 DRWN: YAMAKI 2015/03/03 CHKD: KOMATSU 2015/03/03 APPR: MAYAMOTO 2015/04/28	QUALITY SYMBOLS ▽=0 ▽=0 ▽=0	GENERAL TOLERANCES (UNLESS SPECIFIED)		DIMENSION STYLE MM ONLY		SCALE	DESIGN UNITS METRIC	THIRD ANGLE PROJECTION		
		4 PLACES	±---	±---	DRAWN BY SHSHIBATA	DATE 2007/6/6	TITLE 2.0MM PITCH W/B CONN. WAFER ASSY EMBOSS TAPE PACKAGE			
		3 PLACES	±---	±---	CHECKED BY TAITO	DATE 2007/6/6	molex			
		2 PLACES	±---	±---	APPROVED BY MAYAMOTO	DATE 2012/03/14				
1 PLACE	±---	±---	MATERIAL NO.		DOCUMENT NO. SD-502352-002		SHEET NO. 1 OF 2			
0 PLACE	±---	±---	ANGULAR ± °		SEE CHART		THIS DRAWING CONTAINS INFORMATION THAT IS PROPRIETARY TO MOLEX INCORPORATED AND SHOULD NOT BE USED WITHOUT WRITTEN PERMISSION			

