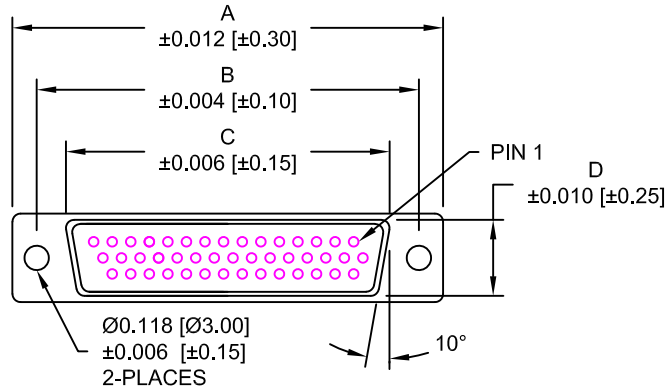


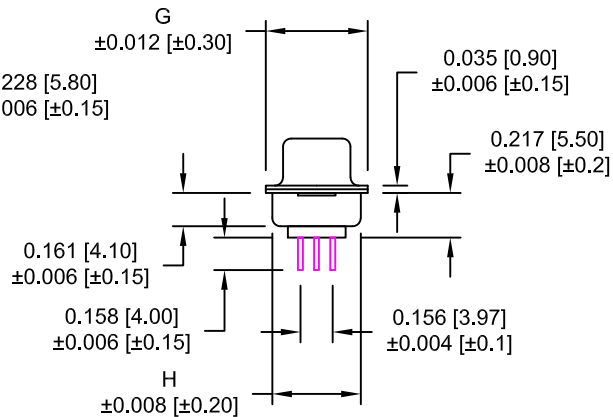
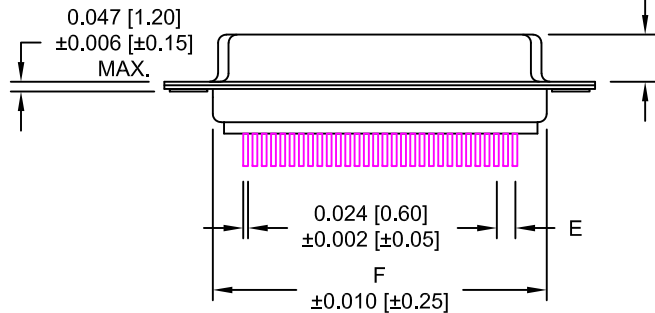
DESCRIPTION: HIGH DENSITY FEMALE - VERTICAL DIP SOLDER

DIMENSIONS

No. OF PINS	A	B	C	D	E	F	G	H
15	1.213	0.984	0.643	0.311	0.090	0.756	0.496	0.429
	30.80	24.99	16.34	7.90	2.29	19.20	12.60	10.90
26	1.541	1.312	0.966	0.311	0.090	1.091	0.496	0.429
	39.15	33.32	24.53	7.90	2.29	27.70	12.60	10.90
44	2.087	1.852	1.512	0.311	0.090	1.618	0.496	0.429
	53.00	47.04	38.40	7.90	2.29	41.10	12.60	10.90
62	2.728	2.500	2.155	0.311	0.095	2.256	0.496	0.429
	69.30	63.50	54.76	7.90	2.41	57.30	12.60	10.90
78	2.638	2.406	2.057	0.429	0.095	2.169	0.606	0.526
	67.00	61.10	52.26	10.90	2.41	55.10	15.40	13.35



4 ROWS



180-YYY-213RYY1

SERIES _____
POSITIONS _____
015 _____
026 _____
044 _____
062 _____
078 _____
GENDER _____
2 = FEMALE
TERMINATION _____
1 = VERTICAL DIP SOLDER
SHELL PLATING _____
2 = TIN
3 = NICKEL
RoHS COMPLIANT (260°C)
HARDWARE OPTIONS _____
00 = NO HARDWARE
01 = .098" CLINCH NUT (BOARD SIDE)
02 = .236" CLINCH NUT (BOARD SIDE)
03 = .236" CLINCH NUT (MATING SIDE)
05 = .237" 4-40 BOARD LOCK
08 = .224" 4-40 BOARD LOCK
90 = .237" 4-40 BOARD LOCK
FOR 0.093" BOARD MAX.
91 = .237" 4-40 SPACER/BOARD LOCK
92 = .237" 4-40 SPACER/BOARD LOCK
FOR 0.093" BOARD MAX.
PLATING OPTIONS _____
1 = GOLD FLASH
2 = 30u" GOLD
A = 30u" GOLD MATING AREA, GOLD FLASH
OVERALL

MATERIAL:

SHELL: STEEL, NICKEL PLATED
INSULATOR: PBT, UL 94V-O RATED,
+30% FIBER-GLASS OR NYLON-66
CONTACT: BRASS, GOLD PLATED OVER NICKEL

ELECTRICAL:

CURRENT RATING: 3 AMPS
CONTACT RESISTANCE: 15 mOhms Max.
INSULATION RESISTANCE: 1,000 MOhms min.
VOLTAGE: 500VAC FOR 1 MINUTE
TEMPERATURE: -50° C TO 100° C

DO NOT SCALE FROM DRAWING



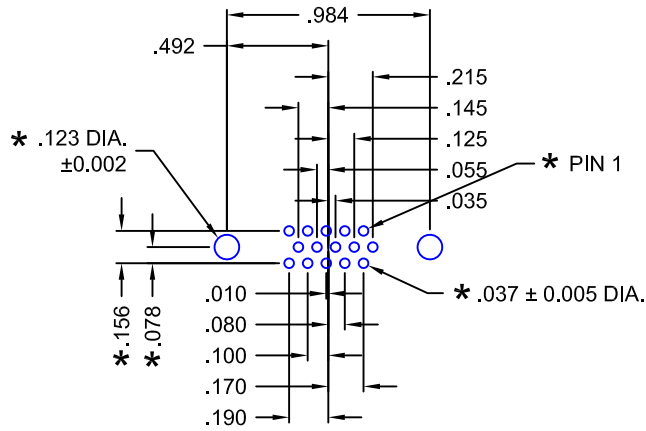
THESE DRAWINGS AND SPECIFICATIONS ARE THE PROPERTY OF NorComp AND SHALL NOT BE REPRODUCED, COPIED OR USED AS THE BASIS FOR THE MANUFACTURE OF SALE OF APPARATUS WITHOUT WRITTEN PERMISSION.

DRAWN: PAM JENKINS	DATE: 09-12-05
CHECKED:	DATE:
SCALE: 1 : 1	SHEET 1 OF 3
DWG NO. 180-YYY-213RYY1	REV 18

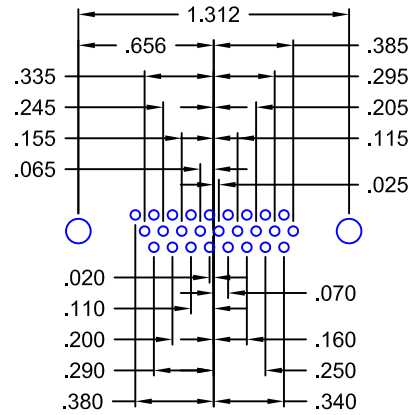
RoHS COMPLIANT

NorComp

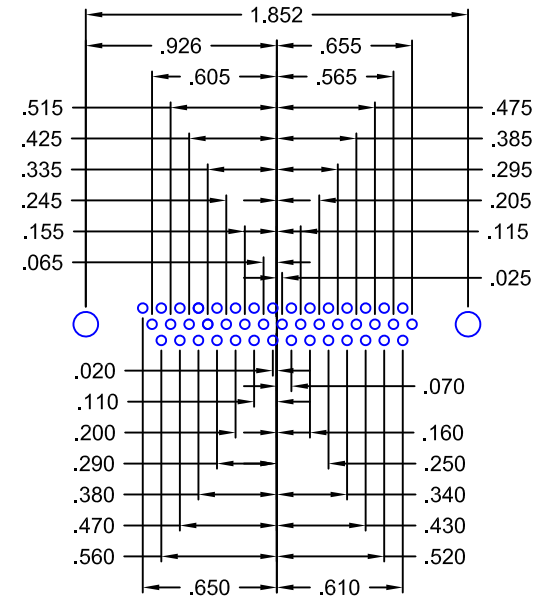
DESCRIPTION: PCB LAYOUT - VERTICAL - FEMALE



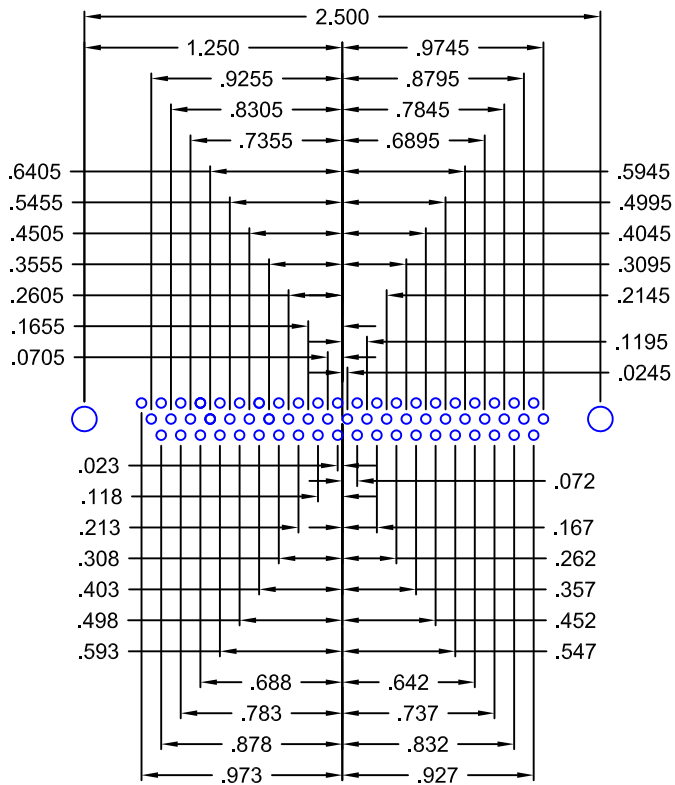
15 POSITION



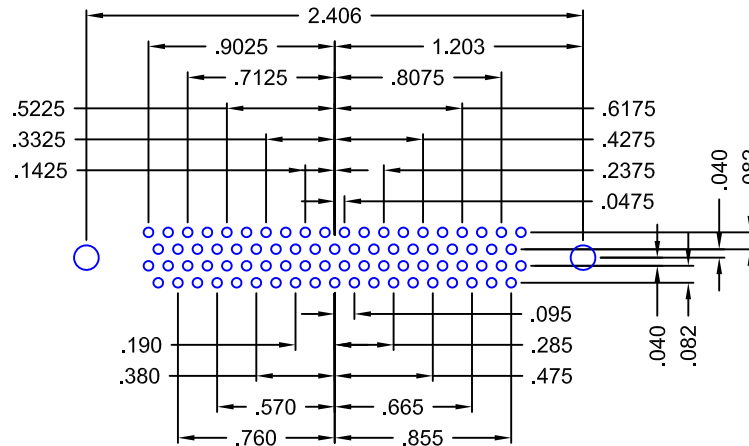
26 POSITION



44 POSITION



62 POSITION



78 POSITION

180 SERIES
HIGH DENSITY
VERTICAL

HOLE PATTERN SHOWN
ARE FOR FEMALE

* TYP. ON ALL SIZES

DO NOT SCALE FROM DRAWING

	THESE DRAWINGS AND SPECIFICATIONS ARE THE PROPERTY OF NorComp AND SHALL NOT BE REPRODUCED, COPIED OR USED AS THE BASIS FOR THE MANUFACTURE OF SALE OF APPARATUS WITHOUT WRITTEN PERMISSION.		DRAWN: PAM JENKINS	DATE: 09-12-05
			CHECKED:	DATE:
<h1>NorComp</h1>			SCALE:	SHEET 2 OF 3
			DWG NO.	REV 18
<h2>180-YYY-213RYY1</h2>				

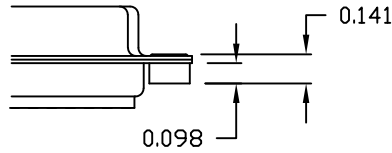
DESCRIPTION: CLINCH NUT HARDWARE

ALL CLINCH-NUTS ARE 4-40 INTERNAL THREADS

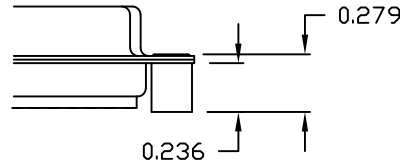
TOLERANCE:

ALL DIMENSIONS ARE ± 0.010

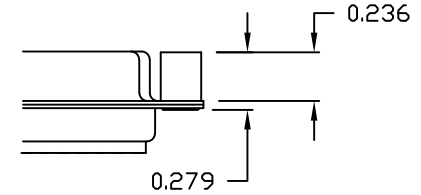
01X 0.098" (BOARD SIDE) - CN1



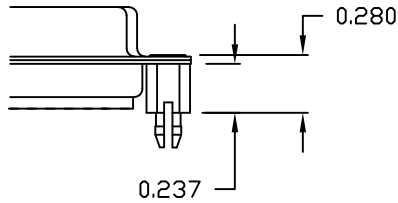
02X 0.236" (BOARD SIDE) - CN2



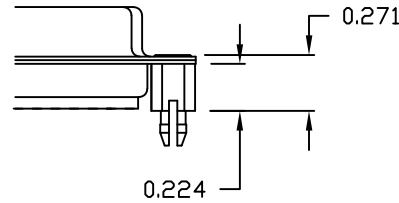
03X..... 0.236" (MATING SIDE) - CN8



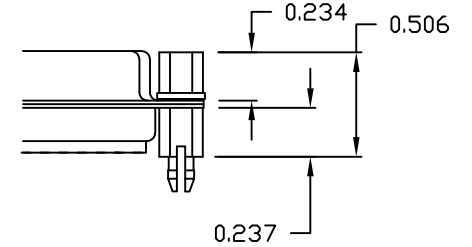
05X 0.237" (BOARD SIDE) - CN10



08X 0.228" (BOARD SIDE) - CN3

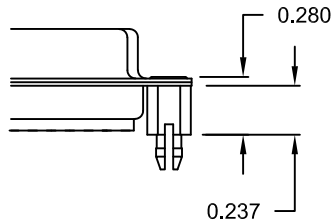


91X 0.237" BOARD SIDE
0.197 MATING SIDE
CN10/SFSO4404

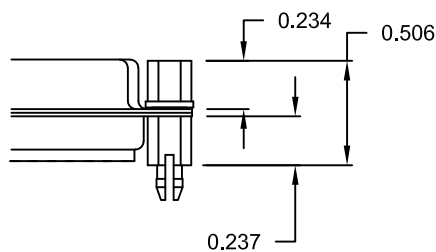


NOTE: 4-40 FEMALE SCREW LOCK IS REMOVABLE

90X 0.237" (BOARD SIDE) - CN10-237-093



92X 0.237" BOARD SIDE
0.197 MATING SIDE
CN10-237-093/SFSO4404



NOTE: 4-40 FEMALE SCREW LOCK IS REMOVABLE

NOTE: 90 & 92 OPTION FOR 0.093" MAX. BOARD THICKNESS

DO NOT SCALE FROM DRAWING

RoHS COMPLIANT



THESE DRAWINGS AND SPECIFICATIONS ARE THE PROPERTY OF NorComp AND SHALL NOT BE REPRODUCED, COPIED OR USED AS THE BASIS FOR THE MANUFACTURE OF SALE OF APPARATUS WITHOUT WRITTEN PERMISSION.

NorComp

DRAWN: WAYNE ROBBINS		DATE: 11-28-05	
CHECKED:		DATE:	
SCALE:	SHEET 3	OF 3	REV 18
DWG NO. 180-YYY-213RYY1			