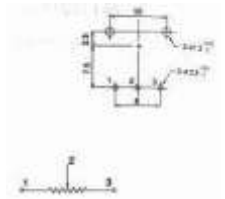
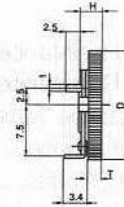
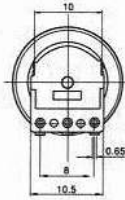


SUPER THIN ROTARY POTENTIOMETER

Q-4545

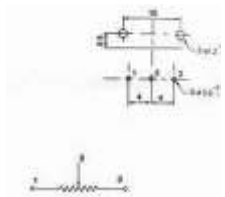
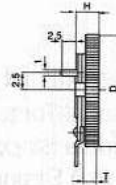
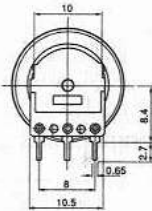
F-1001N

Horizontal Type, Single Unit



F-1001NP

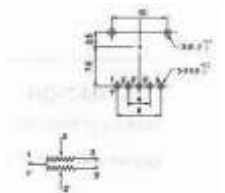
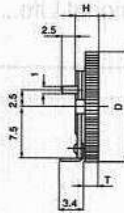
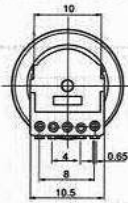
Vertical Type, Single Unit



Q-4544

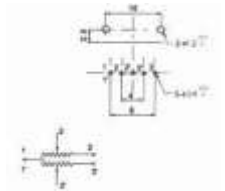
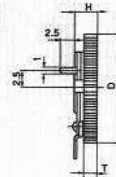
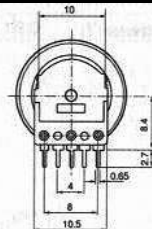
YRV-R1001G22B1

Horizontal Type, Dual Unit



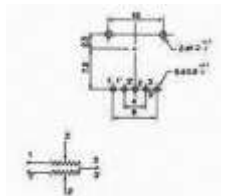
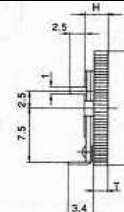
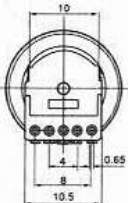
F-1001GP

Vertical Type, Dual Unit



F-1001G-3

Horizontal Type, Dual Unit



SUPER THIN ROTARY POTENTIOMETER

SPECIFICATIONS

Electrical Characteristics

- Resistance 500Ω~1MΩ
- Total Resistance Tolerance ±20%
- Resistance Taper A,B,C,D See P81
- Max. Operation Voltage AC 50V, DC 12V
- Rated Power 0.05W
- Sliding Noise Less than 100 mV
- Insulation Resistance More than 100 MΩ at DC 100 V
- Withstand Voltage 1 minute at AC 100 V
- Residual Resistance Term.1~2: Less than 20Ω
Term.2~3: Less than 20Ω
- Gang Error(Dual Unit) -40 dB ~ 0 dB ± 3dB

Mechanical Characteristics

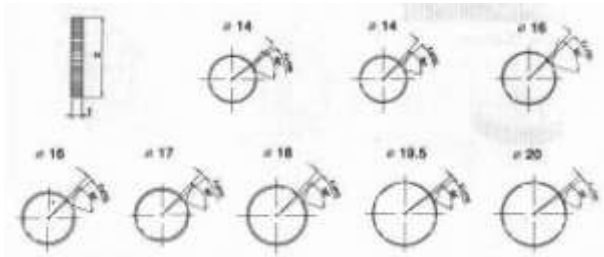
- Total Rotational Angle 270°± 5°
- Rotational Torque 10gf.cm~150 gf.cm
- Rotational Stopper Strength 0.8 Kg.f.cm Min.
- Push-Pull Strength Push:0.5Kg.f Min
Pull:0.2Kg.f Min

Durability

- Rotational Life 10,000 Cycles

KNOB ILLUSTRATION

Standard Dimensions of Knob for F-1001 Series.
(Customer designs are welcomed)



Type of Knob (unit mm)

| Outside Diameter (D) | Ø14 | Ø14 | Ø14 | Ø16 | Ø16 | Ø16 | Ø16 | Ø17 | Ø18 | Ø18 | Ø18 | Ø19.5 | Ø20 | Ø20 | Ø20 | Ø22 |
|----------------------|-----|-----|-----|-----|-----|------|-----|-----|-----|-----|-----|-------|-----|-----|-----|-----|
| Thickness (T) | 1.0 | 2.0 | 2.8 | 1.0 | 2.0 | 2.65 | 2.8 | 2.8 | 1.0 | 2.0 | 2.8 | 2.8 | 2.0 | 2.2 | 2.8 | 2.8 |
| Height(H) | 2.4 | 3.4 | 4.2 | 2.4 | 3.4 | 4.0 | 4.2 | 4.2 | 2.4 | 3.4 | 4.2 | 4.2 | 3.4 | 4.2 | 4.2 | 4.2 |